

Taking the mystery out of health care.

Now in its 3rd edition, *The Family Doctor* is more than just a starting point for concerns you may have about common and rare health and medical problems. Through full-color illustrations, text, sound, animation and video, you'll find the answers you need to the questions you have about your family's health and well-being. Authored and edited by Allan Bruckheim, M.D., FAAFP, the information is presented in a friendly manner that is easy to understand.



- Answers to the 2,300 most commonly asked questions on over 280 conditions
- 300 full-color illustrations
- An animated, easy-to-follow guide to first-aid
- Comprehensive guide to 1,600 prescription drugs
- A unique information source on 900 rare diseases
- Extensive anatomy section, including full-motion video, illustrations and text
- Full printing capability to create a personal medical file



Printed on recycled paper
with soya based inks.

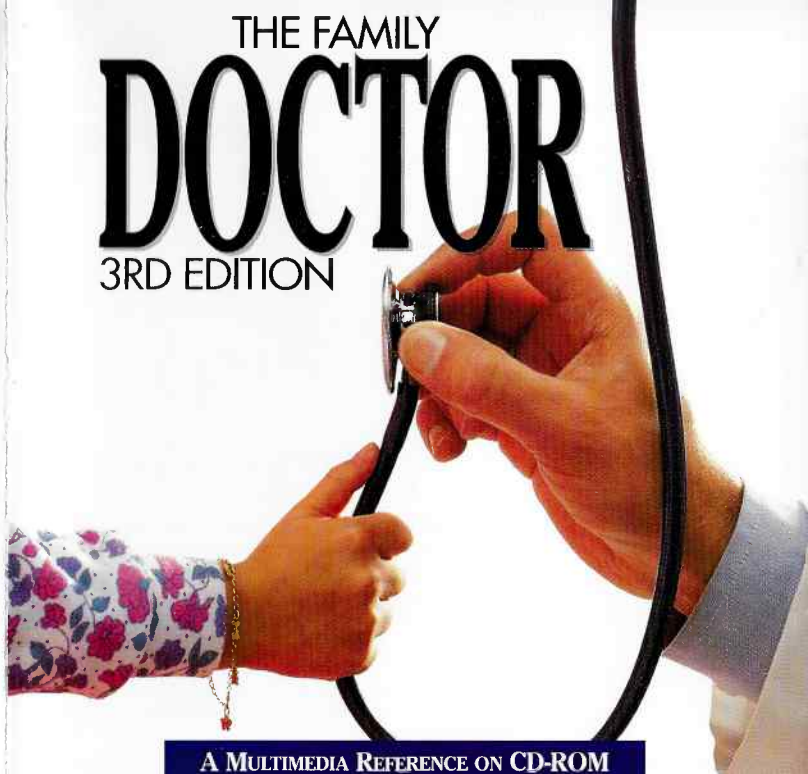


514 NW 11th Ave., Suite 203, Portland, OR 97209, Technical Support (503) 241-1530

10441-001

THE FAMILY DOCTOR

3RD EDITION



A MULTIMEDIA REFERENCE ON CD-ROM

Getting Started.

Installation Instructions

MPC for Windows® version:

Initially, setup the program according to the following steps.

1. Turn on your computer and CD-ROM drive, then place *The Family Doctor* CD-ROM into the CD-ROM drive.
2. At the DOS prompt, type **win D:\setup**, or select the Files menu of Program Manager, then choose Run and type **D:\setup**. (If your CD-ROM drive is not D, use the appropriate letter.)
3. You will be prompted for a directory to install *The Family Doctor*. Follow the onscreen instructions to complete installation.
4. See README.TXT on the CD-ROM for more information..

Macintosh® version:

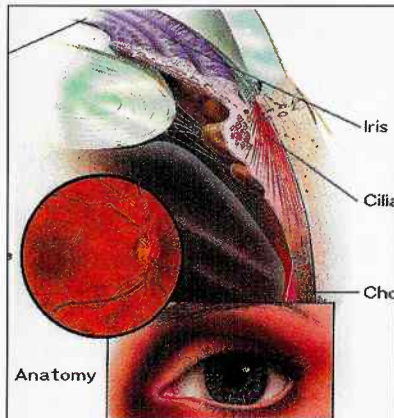
1. Turn on your computer and CD-ROM drive, then place *The Family Doctor* CD-ROM into the CD-ROM drive. You can run *The Family Doctor* directly from the CD-ROM drive.
2. Double-click on The Family Doctor icon that appears on the Desktop. A window will appear.
3. Launch *The Family Doctor* by double-clicking on *The Family Doctor* icon that appears in the window.

For Technical Support call (503) 241-1530, Monday-Friday, 8-5 Pacific Time. 24-hour BBS: (503) 241-1573. Settings are N/8/1, no parity, up to 9600 Baud. CompuServe account 71333,3143 or Internet address 71333.3143@COMPUSERVE.COM

Dr. Allan Bruckheim makes house calls.

This is the medical reference that is simple to use, easy to understand and written in a warm and friendly style. Authored and edited by nationally-known syndicated columnist, Allan Bruckheim, M.D., FAAFP, *The Family Doctor* combines full-color

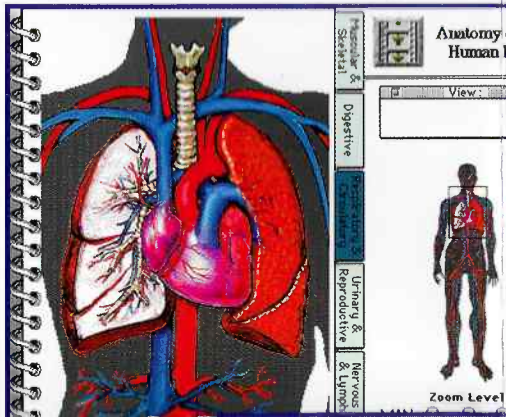
illustrations, text, sound, animation and video to provide answers to questions about family health and well-being. Not only can you increase your depth of medical knowledge, but it also contains a comprehensive prescription drug guide and an animated first aid section for instant help in emergencies. The printing capability allows you to capture a specific file and print it for other uses.



THE FAMILY DOCTOR

3RD EDITION

There are three levels of zoom capability for the anatomy section, allowing you to peel away layers of the body system. Full-motion video guides you through the basics of human anatomy.



Mitral Valve Prolapse

Mitral Valve Prolapse with Regurgitation



Diastole



Mitral Valve



Systole

Reprinted with permission from Medscape and Dr. J. P. Kitzman, MD, PhD, 1997-98. All rights reserved. No part of this publication may be reproduced without written permission from Medscape.

There are 300 full-color illustrations, each clearly detailed. Text is written in plain English.

The animated first aid section leads you through each step of emergency procedures.

CPR

Immediate treatment: ages 8 through adult

An easy-to-use search menu lets you locate information quickly by subject, word or combination of words.

Search

Indexes: WORDS, WORDS, WORDS, WORDS

Modifier: And, And, ,

1 Heart 975 975

2 Pump 36 19

3

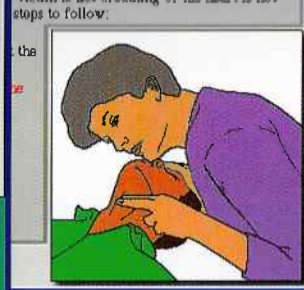
4

☒ All ☐ All

☒ Auto Search

Combined Matches: 10 limited

- What is the Best First Aid for Snake Bites?
- Electric Shock for Irregular Heart Rhythms
- Sudden Death During Sex
- Can You Explain the Origins of a "Large Heart"?
- Is There Help for Dizziness After Standing Up?
- Keep Taking Medication for High Blood Pressure
- Irregular Heartbeat
- What Are the Reasons for Taking a "Water Pill"?
- Cholesterol Control: A Lifetime Plan



YOU WON'T FIND A MORE COMPREHENSIVE MEDICAL REFERENCE.

Now in its 3rd edition, *The Family Doctor* is updated annually, to assure that information is always current. It includes the answers to more than 2,300 questions, covering everything from abscesses to x-rays. It's simple to use with easy search and browse capabilities. There is a comprehensive drug guide to help you understand your doctor's prescriptions, information related to 900 rare diseases, an animated first aid section, and a section on the basics of anatomy that includes full-motion video, extensive articles and illustrations. And if you want even more information than is provided by *The Family Doctor*, we've also included a list of associations and sources of literature.

© Copyright 1993, Creative Multimedia Corporation. Other words, images and sounds copyright of respective owners. All rights reserved. Made in U.S.A.