

CREATIVE WORKSHOP SERIES™

# *the* Toy Shop™

Marvelous Mechanical Models that Really Work!



**Review  
Copy  
NOT FOR  
RESALE**

Creative Concept and Toy Designs  
by Active Arts, Inc.

By Glenn Axworthy

**MACINTOSH**

Disk • 128K • Printer Required (see back)

Mouse

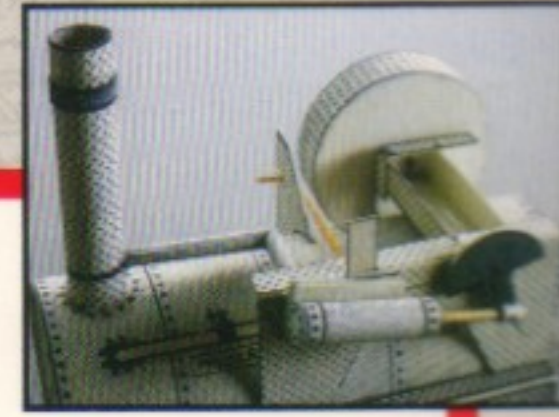
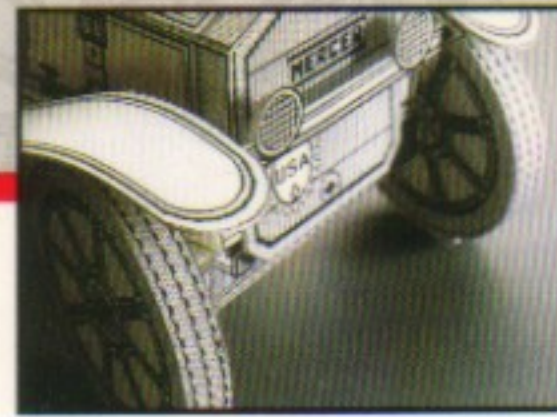
CREATIVE WORKSHOP SERIES

  
**Broderbund®**



# the Toy Shop™

Marvelous Mechanical Models that Really Work!



## How Does a Computer Create A Working Steam Engine, A Mechanical Bank, and The Spirit of St. Louis?

### With Your Help.

A balloon-powered steam engine, a clockwork bank that runs on pennies, a scale model of The Spirit of St. Louis: These are just three of the 20 mechanical models you can create with The Toy Shop. Each one is a three-dimensional marvel that starts with your computer.

### Tap Your Creativity.

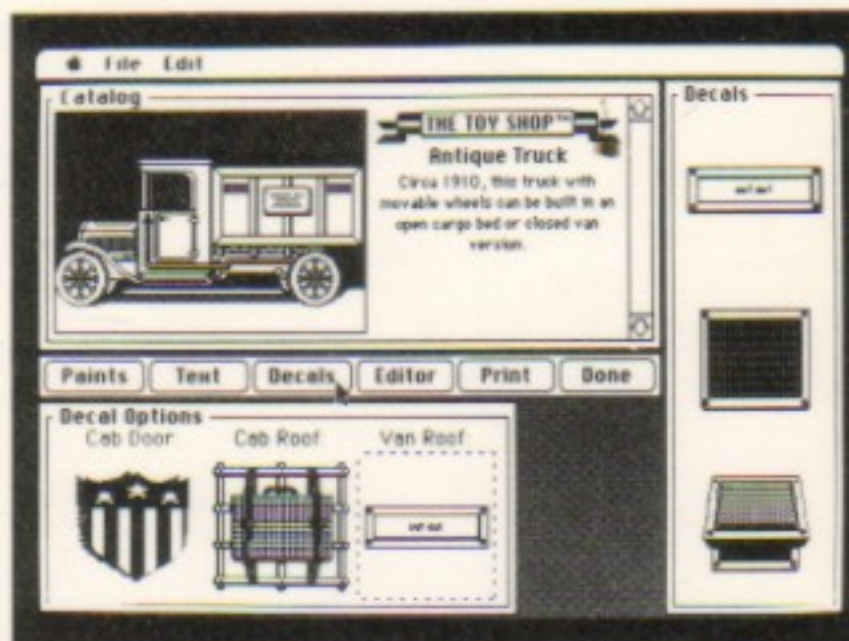
The Toy Shop's easy-to-use software contains all the detailed designs. Simply choose one from the on-screen menu, then give it personality by adding custom patterns, graphics and text.

Once you've customized your model, send it to print. Precision parts will roll out of your printer, ready to mount on special adhesive cardstock included in the package. Then you're ready to roll up your sleeves, cut out the pieces and start building.

### Marvelous Machines Made of Paper!

You can develop your model-making abilities by building simple projects like the Flying Propeller and Balanc-

ing Jet, hone your skills on intermediate models like the Antique Truck and Pennypower Scale, and then move up to advanced challenges like the Tractor Crane, Mechanical Bank and Steam Engine.



Every model and toy will do something—from soaring into the air like the rubber-band-powered Heli-craft to floating on the head of a pin like the "gravity-defying" Balancing Jet. The Medieval Catapult hurls miniature missiles, the Equatorial Sundial tells accurate time, the horses on the turn-of-the-century Carousel prance up and down.

Each of these toys is a marvel of engineering that you'll print out on ordinary pinfeed computer paper and then assemble yourself. The Toy Shop includes a supply of model-makers' adhesive cardstock, wire, wooden dowels, rubber stripping and balloons to help you get started.

### Build One or a Hundred.

The supply of models and toys is endless. If you make a mistake on a project, simply print another copy of the design and start again. The Toy Shop's 20 different projects offer hundreds of possible variations, giving you, your friends and your family hours of enjoyment—and opening up a whole new world of creativity with your computer.

Ages 12 Years to Adult

Package Design © 1986 Brøderbund Software, Inc.

The Toy Shop may be used with the following printers: Apple ImageWriter • ImageWriter II • Apple Scribe • 100% ImageWriter-compatible printers.

**Broderbund®**

For more information about Brøderbund and our products, write to us at: 17 Paul Drive, San Rafael, California 94903-2101  
Toy Designs © 1986 Active Arts, Inc./Software © 1986 Brøderbund Software, Inc.







Macintosh

MACDSK 56

*the* **Toy Shop**<sup>TM</sup>

MASTER DISK

  
Broderbund®

17 Paul Drive San Rafael California 94903

**Dealer  
Demo  
NOT FOR  
RESALE**

Macintosh

MACDSK 56

*the* **Toy Shop**<sup>TM</sup>

TOY DISK 1

  
Broderbund®

17 Paul Drive San Rafael C

**Dealer  
Demo  
NOT FOR  
RESALE**

Macintosh

MACDSK 56

*the* **Toy Shop**<sup>TM</sup>

TOY DISK 2

  
Broderbund®

17 Paul Drive San Rafael

**Dealer  
Demo  
NOT FOR  
RESALE**