

I N S I D E   C A R B O N

---

# Carbon Porting Guide

For Mac OS X



December 2000

Apple Computer, Inc.  
© 1999-2000 Apple Computer, Inc.  
All rights reserved.

No part of this publication may be reproduced, stored in a retrieval system, or transmitted, in any form or by any means, mechanical, electronic, photocopying, recording, or otherwise, without prior written permission of Apple Computer, Inc., with the following exceptions: Any person is hereby authorized to store documentation on a single computer for personal use only and to print copies of documentation for personal use provided that the documentation contains Apple's copyright notice.

The Apple logo is a trademark of Apple Computer, Inc. Use of the "keyboard" Apple logo (Option-Shift-K) for commercial purposes without the prior written consent of Apple may constitute trademark infringement and unfair competition in violation of federal and state laws.

No licenses, express or implied, are granted with respect to any of the technology described in this book. Apple retains all intellectual property rights associated with the technology described in this book. This book is intended to assist application developers to develop applications only for Apple-labeled or Apple-licensed computers.

Every effort has been made to ensure that the information in this document is accurate. Apple is not responsible for typographical errors.

Apple Computer, Inc.  
1 Infinite Loop  
Cupertino, CA 95014  
408-996-1010

Apple, the Apple logo, AppleScript, AppleTalk, ColorSync, HyperCard, LaserWriter, Mac, Macintosh, MPW, QuickDraw, QuickTime, SANE, and WorldScript are trademarks of Apple Computer, Inc., registered in the United States and other countries.

PowerPC is a trademark of International Business Machines Corporation, used under license therefrom.

UNIX is a registered trademark in the United States and other countries, licensed exclusively through X/Open Company, Ltd.

Simultaneously published in the United States and Canada

Even though Apple has reviewed this manual, APPLE MAKES NO WARRANTY OR REPRESENTATION, EITHER EXPRESS OR IMPLIED, WITH RESPECT TO THIS MANUAL, ITS QUALITY, ACCURACY, MERCHANTABILITY, OR FITNESS FOR A PARTICULAR PURPOSE. AS A RESULT, THIS MANUAL IS SOLD "AS IS," AND YOU, THE PURCHASER, ARE ASSUMING THE ENTIRE RISK AS TO ITS QUALITY AND ACCURACY.

IN NO EVENT WILL APPLE BE LIABLE FOR DIRECT, INDIRECT, SPECIAL, INCIDENTAL, OR CONSEQUENTIAL DAMAGES RESULTING FROM ANY DEFECT OR INACCURACY IN THIS MANUAL, even if advised of the possibility of such damages.

THE WARRANTY AND REMEDIES SET FORTH ABOVE ARE EXCLUSIVE AND IN LIEU OF ALL OTHERS, ORAL OR WRITTEN, EXPRESS OR IMPLIED. No Apple dealer, agent, or employee is authorized to make any modification, extension, or addition to this warranty.

Some states do not allow the exclusion or limitation of implied warranties or liability for incidental or consequential damages, so the above limitation or exclusion may not apply to you. This warranty gives you specific legal rights, and you may also have other rights which vary from state to state.

# Contents

<b>Chapter 1</b>	<b>Introduction</b>	<b>11</b>
<hr/>		
	What Is Carbon?	11
	What Are the Benefits of Carbon?	12
	What Is in Carbon Today?	13
	What's Not in Carbon?	14
	How Does Carbon Work?	14
	Carbon and the Mac OS Application Model	16
	Preemptive Scheduling and Application Threading	16
	Separate Application Address Spaces	16
	Virtual Memory	17
	Resources	17
	Code Fragments and the Code Fragment Manager	17
	Mixed Mode Manager	17
	Printing	18
	Control Panels	18
	The Trap Table	18
	Standard and Custom Definition Procedures	18
	Application-Defined Functions	19
	Data Structure Access	19
	Additional Information and Feedback	19
<b>Chapter 2</b>	<b>Preparing Your Code for Carbon</b>	<b>21</b>
<hr/>		
	Using Carbon Dater	22
	Analyzing Your Application	22
	Reading the Report	23
	Analysis of Imports	23
	Analysis of Access to Low Memory Addresses	23
	Analysis of Resources Loaded Into the System Heap	24
	Additional Reports	24
	The Carbon Specification	24

## C O N T E N T S

Essential Steps for Porting Your Application	25
Make Sure All of Your Code Is PowerPC-Native	25
Update to the Current Universal Interfaces	25
Use the Carbon SDK	26
Target Mac OS 8 and 9 First	26
Begin With CarbonAccessors.o	26
Use Casting Functions to Convert DialogPtrs and WindowPtrs	27
Replace Macro Calls to the Mixed Mode Manager With UPP Accessor Functions	28
Remove Direct Access to Low-Memory Globals	29
Use DebuggingCarbonLib	30
Modify or Conditionalize Your Headers	31
Update Modified or Obsolete Functions	31
Adopt Required Carbon Technologies	32
Add a 'plst' 0 Resource	32
Conditionalize Quit Menu Items	32
Additional Porting Issues	33
Determine the Appropriate CarbonLib Version	34
Draw Only Within Your Own Windows	35
Do Not Patch Traps	35
Don't Pass Pointers Across Processes	35
Check Your OpenGL Code	36
Examine Your Plug-ins	36
Linking to Non-Carbon-Compliant Code	36
Window Manager Issues	37
Handling Buffered Windows	37
Bypassing the Window Manager Port	39
Window Dragging and Resizing Q&A	39
Optimizing Your Code for Carbon	43
Manage Memory Efficiently	43
Avoid Polling and Busy Waiting	45
Use "Lazy" Initialization for Shared Libraries	45
Adopt HFS Plus APIs	45
Consider Mach-O Executables	46
Move Resources to Data Fork-Based Files	46
Consider Using Bundles	47
Begin Transitioning to the Aqua Interface	48

## C O N T E N T S

Adopt a Terse Name for the Application Menu	49
Provide Thumbnail Icons for Your Application	49

### **Chapter 3 Building Carbon Applications** 53

---

Native Mac OS 9 Versus Mac OS X's Classic Environment	53
Development Scenarios	54
Using CodeWarrior to Build a CFM Carbon Application	54
Using CodeWarrior to Build a Mach-O Carbon Application	54
Using Project Builder to Build a Mach-O Carbon Application	55
Building a CFM Carbon Application With CodeWarrior	55
Preparing Your Development Environment	56
Building Your Application	57
Running Your Application on Mac OS 9	57
Running Your Application on Mac OS X	58
Building a Mach-O Carbon Application With CodeWarrior	58
Preparing Your Development Environment	58
Building Your Application	59
Running Your Application on Mac OS X	59
Building a Mach-O Carbon Application With Project Builder	59
Building Applications Using MPW	59
Debugging Your Application	60

### **Chapter 4 A Porting Example** 63

---

The Sample Application	63
Obtaining the Carbon Dater Report	64
The Basic Port	68
Make Sure All of Your Code is PowerPC-Native	69
Update to the Current Universal Interfaces and Use the Carbon SDK	69
Target Mac OS 8 and 9 First	70
Begin With CarbonAccessors.o	70
Use Casting Functions to Convert DialogPtrs and WindowPtrs	73
Modify or Conditionalize Your Headers	73
Replace Macro Calls to the Mixed Mode Manager With UPP Accessor Functions	73

## C O N T E N T S

Remove Direct Access to Low-Memory Globals	73
Use DebuggingCarbonLib	74
Update Modified or Obsolete Functions	74
Adopt Required Carbon Technologies	75
Add a 'plst' 0 Resource	75
Conditionalize Quit Menu Items	76
Cleanup	78
Additional Changes for Aqua	78
Adjust the Window Size	78
Modify the About Box	78
The Carbon Version of Sample	79

### **Chapter 5** New Carbon Technologies 97

---

Carbon Event Manager	97
Core Foundation	98
DataBrowser	99
Multilingual Text Engine (MLTE)	100
An Example: Adding Carbon Events to Sample	101
Standard Event Handlers	101
The Basic Conversion	102
Installing the Standard Event Handlers	103
Registering Your Own Event Handlers	104
The Application-Level Event Handler	105
The Window Event Handler	108
Cleanup	111

### **Appendix A** New Carbon Functions 113

---

Custom Definition Procedures	113
Changes to WDEFs	114
Changes to MDEFs	114
Functions for Accessing Opaque Data Structures	114
Casting Functions	115
Accessor Functions	116
Utility Functions	125

## C O N T E N T S

Functions in CarbonAccessors.o	126
Debugging Functions	130
CheckAllHeaps	130
IsHeapValid	130
IsHandleValid	130
IsPointerValid	130
Resource Chain Manipulation Functions	131
InsertResourceFile	131
DetachResourceFile	131
FSpResourceFileAlreadyOpen	132

### **Appendix B** The Sample Application 133

---

### **Appendix C** Document Version History 155

---

### Index 161

---





# Figures, Listings, and Tables

## **Chapter 1 Introduction** 11

---

- Figure 1-1 Current and future composition of the Carbon API 13  
Figure 1-2 Calling Carbon functions on Mac OS X and Mac OS 8 and 9 15

## **Chapter 2 Preparing Your Code for Carbon** 21

---

- Figure 2-1 Outline feedback as a user resizes a window 41  
Figure 2-2 Thumbnail icons in a .icons file, displayed in Icon Browser 50  
Table 2-1 Summary of Carbon low memory accessor support 29

## **Chapter 4 A Porting Example** 63

---

- Figure 4-1 The Sample application 64  
Figure 4-2 A Carbon Dater report 65  
Figure 4-3 The About box for Sample 79  
Figure 4-4 The Carbon version of Sample on Mac OS X 80  
Listing 4-1 Carbon version of Sample.c 80  
Listing 4-2 Carbon version of SampleInit.c 92  
Table 4-1 Carbon Dater output for incompatible functions 66

## **Chapter 5 New Carbon Technologies** 97

---

- Listing 5-1 Application-level event handler for Sample 105  
Listing 5-2 Window event handler for Sample 108

## **Appendix A New Carbon Functions** 113

---

- Listing A-1 Example of unsupported data structure access 116  
Listing A-2 Example of using Carbon-compatible accessor functions 117  
Table A-1 Summary of Carbon Human Interface Toolbox accessors 119

Table A-2	QuickDraw accessor functions	123
Table A-3	Functions in CarbonAccessors.o	126
Table A-4	Functions removed from CarbonAccessors.o	129

## **Appendix B The Sample Application** 133

---

Listing B-1	Sample.c	133
Listing B-2	SampleInit.c	149

## **Appendix C Document Version History** 155

---

Table C-1	Carbon Porting Guide revision history	155
-----------	---------------------------------------	-----

# Introduction

---

The Carbon Porting Guide is intended to help experienced Macintosh developers convert existing Mac OS applications into Carbon applications that can run on Mac OS X as well as Mac OS 8 and 9. It contains detailed information about how to adapt and build your application using the Carbon API as well as step-by-step examples of the porting process.

To make the Carbon transition as smooth as possible, you should also be familiar with the following documents before beginning your port:

- *Inside Mac OS X: System Overview*. This document contains in-depth discussions of Mac OS X features and architecture. It also contains more detailed information about some topics discussed in this document.
- *Inside Mac OS X: Aqua Human Interface Guidelines*. This document provides the human interface guidelines for the Mac OS X user interface.

This chapter introduces Carbon and provides an overview of the changes you'll need to be aware of as you convert your application.

## What Is Carbon?

---

Carbon is the set of programming interfaces derived from earlier Mac OS APIs that can run on Mac OS X. Some of these APIs have been modified or extended to take advantage of Mac OS X features such as preemptive multitasking and protected memory.

## Introduction

In addition to being able to run on Mac OS X, Carbon applications built for Mac OS X can also run on Mac OS 8 and 9 when the CarbonLib system extension is installed. (As always, you should test for the existence of specific features before using them.)

Carbon includes about 70 percent of the existing Mac OS APIs, covering about 95 percent of the functions used by applications. Because it includes most of the functions you rely on today, converting to Carbon is a straightforward process. Apple provides tools and documentation to help you determine the changes you will need to make in your source code, as well as the header files and libraries necessary to build a Carbon application.

Mac OS X brings important new features and enhancements that developers have asked for, and Carbon allows you to take advantage of them while preserving your investment in Mac OS source code. As Apple moves the Mac OS forward, Carbon ensures you won't be left behind.

## What Are the Benefits of Carbon?

---

Carbon applications gain these benefits when running under Mac OS X:

- Greater stability. Protected address spaces help prevent errant applications from crashing the system or other applications.
- Improved responsiveness. Each application is guaranteed processing time through preemptive multitasking, resulting in a more responsive user experience.
- Dynamic resource allocation. More efficient use of system resources, including the elimination of fixed size heaps, means your application can allocate memory and other shared resources based on actual needs rather than predetermined values. Each application can access up to 4GB of potential addressable memory.
- Aqua look and feel. Apple's newest user interface is available only to applications that run natively on Mac OS X.

## What Is in Carbon Today?

---

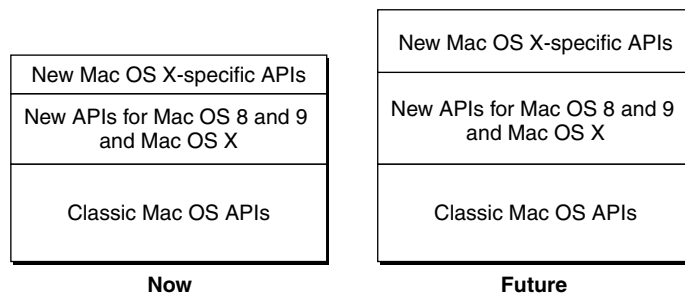
The Carbon programming interface consists of the following types of APIs:

- Classic Mac OS APIs that can run unchanged on Mac OS X. These comprise the majority of the APIs in your current application.
- Classic Mac OS APIs that have been modified to work on Mac OS X. For example, to operate properly in a preemptively-scheduled environment, a function may now require an additional parameter to specify the context (or process) to which it belongs.
- New APIs that can run on both Mac OS X and Mac OS 8 and 9. For example, Core Foundation and the Carbon Event Manager provide additional benefits for Carbon applications but are not required for porting.
- New APIs that are available only on Mac OS X.

Currently, the Classic Mac OS APIs make up the largest proportion of Carbon APIs, as shown in Figure 1-1. However, as Carbon evolves to take advantage of new features in Mac OS X, new Mac OS X-specific APIs will be added that enhance its capabilities.

---

**Figure 1-1** Current and future composition of the Carbon API



## What's Not in Carbon?

---

If Carbon does not support a Classic Mac OS function, it is generally for one of the following reasons:

- The function performs actions that are illegal or make no sense in Mac OS X. For example, functions that are 68K-specific, or functions that allocate memory in the system heap (Mac OS X has no concept of a system heap).
- The function directly accesses hardware. The Carbon environment was designed to be fully abstracted from hardware, so such functions are not allowed.
- The function was there for legacy purposes only, and has more modern replacements (for example, File Manager functions that use working directories).

In addition, certain Classic Mac OS programming practices are no longer allowed:

- No 68K code allowed. All Carbon code must be PowerPC-based.
- No trap table access. The trap table and Patch Manager are 68K-specific.
- Limited access to data structure fields. See “Data Structure Access” (page 19).

## How Does Carbon Work?

---

Carbon lets you create one executable file that can run on both Mac OS X and Mac OS 8 and 9. You accomplish this by linking your application with a single stub library, *CarbonLibStub*, at build time. At runtime your application links with the appropriate Carbon implementation stored as shared libraries (sometimes referred to as DLLs).

On Mac OS X, your application links dynamically to the Carbon framework, which is a hierarchy of libraries and resources that contains the implementation of Carbon.

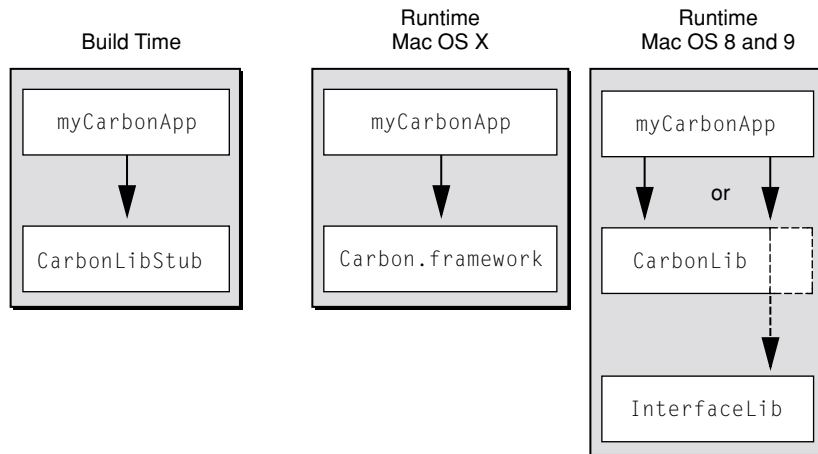
## Introduction

On Mac OS 8 and 9, the Carbon implementation is stored as a system extension named `CarbonLib`. This library contains two types of elements:

- Implementations of all functions specific to Carbon.
- Exports of functions currently available in system software. For example, calls to a Menu Manager function available in both Carbon and Mac OS 8 and 9 will merely call through to the implementation in `InterfaceLib`.

Figure 1-2 shows Carbon functions called on Mac OS X and Mac OS 8 and 9.

**Figure 1-2** Calling Carbon functions on Mac OS X and Mac OS 8 and 9



In general, for a pure Carbon application, the only library you should link against is `CarbonLib`. See [“Linking to Non-Carbon-Compliant Code”](#) (page 36) for special cases where you may need to link to other libraries.

## Carbon and the Mac OS Application Model

---

The Mac OS application model remains fundamentally unchanged in Carbon. Carbon applications employ system services in essentially the same manner for both Mac OS 8 and 9 and Mac OS X. But because Mac OS 8 and 9 and Mac OS X are built on different architectures, there will be slight differences in the way your application uses some system services. This section highlights the most important changes you need to be aware of. Chapter 2, “Preparing Your Code for Carbon,” provides more detailed information on each of these subjects.

### Preemptive Scheduling and Application Threading

---

In Mac OS X, each Carbon application is scheduled preemptively against other Carbon applications. For calls to most low-level operating system services, Mac OS X also supports preemptive threading within an application. Because most Human Interface Toolbox functions are not reentrant, however, a multithreaded application will initially be able to call these functions only from cooperatively scheduled threads. Thread-based preemptive access to all system services—including the Human Interface Toolbox—is an important future direction for the Mac OS.

In both Mac OS 8 and 9 and Mac OS X, you can use the Multiprocessing Services API to create preemptively scheduled tasks.

### Separate Application Address Spaces

---

In Mac OS X, each Carbon application runs in its own protected address space. An application can’t reference memory locations—or corrupt another application’s data—outside of its assigned address space. This separation of address spaces increases the reliability of the user’s system, but it may require small programming changes to applications that use zones, system memory, or temporary memory. For example, temporary memory allocations in Mac OS X will be allocated in the application’s address space, and Apple will define new functions for sharing memory between applications. “Manage Memory Efficiently” (page 43) provides more detailed information about memory management for Carbon applications.



## Introduction

## Virtual Memory

---

Mac OS X uses a dynamic and highly efficient virtual memory system that is always enabled. Your Carbon application must therefore assume that virtual memory is turned on at all times. In addition, the Mac OS X virtual memory system introduces a number of changes to the addressing model that are discussed in “Manage Memory Efficiently” (page 43).

## Resources

---

Mac OS X supports traditional Resource Manager resources, but you should consider moving resources to the data fork of your application and accessing them using Core Foundation CFBundle APIs instead. Doing so will ensure that this information will not be lost if your application is copied by a method that does not recognize resource forks. See “Move Resources to Data Fork–Based Files” (page 46) and “Consider Using Bundles” (page 47) for more information.

Note that you can no longer store executable code in resources.

## Code Fragments and the Code Fragment Manager

---

Carbon fully supports the Code Fragment Manager, and the Mac OS X runtime environment supports code compiled into code fragments. For Mac OS X, however, all code fragments must contain only native PowerPC code. In addition, resource-based fragments are no longer allowed.

## Mixed Mode Manager

---

While the Mixed Mode Manager is no longer needed to handle calls between PowerPC and 68K code, there may be instances where it must handle calls between CFM-based code and Mach-O code (the native executable format on Mac OS X). In any case, you must replace the macros for creating and disposing routine descriptors with new Carbon functions for creating, invoking, and disposing universal procedure pointers (UPPs). See “Replace Macro Calls to the Mixed Mode Manager With UPP Accessor Functions” (page 28) for more information.

## Printing

---

Carbon introduces a new Printing Manager that allows applications to print on Mac OS 9 using current printer drivers and on Mac OS X using new printer drivers. The functions and data types defined by the Carbon Printing Manager are contained in the header files `PMApplication.h`, `PMCore.h`, and `PMDefinitions.h`. Documentation for the Carbon Printing Manager is provided with the Mac OS X Developer Tools CD and at the following website:

<http://developer.apple.com/techpubs/carbon/graphics/CarbonPrintingManager/carbonprintingmgr.html>

## Control Panels

---

Carbon does not support control panels. If possible, you should package your control panel as an application.

## The Trap Table

---

The trap table is a 68K-specific mechanism for dispatching calls to Mac OS Toolbox functions. Because Mac OS X does not support 68K code, the Trap Manager is unavailable in Carbon, and your application should not dispatch calls through the trap table. Likewise, the Patch Manager is unsupported in Carbon, and your application should not attempt to patch the trap table or any operating system entry points. If your application relies on patches, please tell us why, so that we can help you remove this dependency.

## Standard and Custom Definition Procedures

---

Carbon supports the standard Mac OS definition procedures (also known as defprocs) for such human interface elements as windows, menus, and controls. Custom definition procedures are also supported (as long as they are compiled as PowerPC code), but there are new procedures for creating and packaging them. These new functions are discussed in “Custom Definition Procedures” (page 113).

## Application-Defined Functions

---

Carbon supports most Mac OS application-defined (callback) functions. Mac OS X fully supports callback functions within an application's address space. In Carbon, callback functions use native PowerPC conventions instead of 68K conventions, but Carbon doesn't change these function definitions. As usual you should pass universal procedure pointers when specifying your callback functions.

## Data Structure Access

---

So that future versions of Mac OS can support access to all system services through preemptive threads, Carbon limits direct application access to some Mac OS data structures. Carbon allows three levels of data structure access, depending on which is appropriate for a given structure:

- Direct access—your application can read from and write to the data structure without restriction.
- Direct access with notification—your application can read from and write to the data structure, but after modifying the structure your application must call a function to notify the operating system that the structure has been changed.
- Indirect access—your application has no direct access to the data structure. Instead, your application can obtain and set values in the structure only by using accessor functions. Structures of this type are said to be “opaque” because their contents are not visible to applications.

Opaque data structures and the functions for using them are discussed in “Functions for Accessing Opaque Data Structures” (page 114).

## Additional Information and Feedback

---

Apple is working hard to deliver the features and performance you expect from Carbon. You can keep abreast of current developments by visiting the Carbon website at

<http://developer.apple.com/macosx/carbon/>

# C H A P T E R 1

## Introduction

where you'll find the complete Carbon Specification, preliminary documentation, and links to other useful information.

If you have comments or suggestions about Carbon, please send them to [carbon@apple.com](mailto:carbon@apple.com).

# Preparing Your Code for Carbon

---

This chapter describes the modifications you need to make to your source code to create a Carbon application. These changes are divided into three categories:

- **Essential changes.** Applications that follow these steps should run on Mac OS X, but may suffer from performance or responsiveness problems.
- **Other porting issues.** These are topics that could affect the porting process depending on the capabilities and needs of your application.
- **Optimization steps.** This section describes steps and issues to consider so your application can take best advantage of Mac OS X. Apple highly recommends that you address at least some of the topics described in this section.

**Note:** Carbon also provides new technologies that give additional functionality to your application. While entirely optional, these additions can improve performance, enhance the user experience, and even simplify future code development. See Chapter 5, “New Carbon Technologies,” for more information.

For more details about porting an application, see Chapter 4, “A Porting Example.”

Technote TN2003, “Moving Your Code to Mac OS X,” contains additional porting information that you may find useful:

<http://developer.apple.com/technotes/tn/tn2003.html>

To make your job easier, begin by using the Carbon Dater tool to analyze the current compatibility level of your application.

## Using Carbon Dater

---

Apple has developed a tool called Carbon Dater to analyze compiled applications and libraries for compatibility with Carbon. You can use Carbon Dater to obtain information about the compatibility of your existing code and the scope of your future conversion efforts.

Carbon Dater works by examining PEF containers in application binaries and CFM libraries. It compares the list of Mac OS symbols your code imports against Apple's database of Carbon-supported functions.

**Note:** Because Carbon Dater examines only PEF containers, it cannot examine 68K-based executable files. If you are porting an older 68K application, you must convert it to PowerPC before running the Carbon Dater tool.

You'll find the Carbon Dater tool and complete instructions online at

<http://developer.apple.com/macosx/carbon/dater.html>

## Analyzing Your Application

---

Using Carbon Dater is a two-step process. You begin by dropping your compiled application or CFM library file onto the Carbon Dater tool. The tool examines the first PEF container in your file and outputs a text file named *filename.CCT* (Carbon Compatibility Test). You can drop more than one file onto the Carbon Dater tool to get a combined report, but the tool examines only the first PEF container in each file.

The CCT file contains a list of all the Mac OS functions referenced by your code. If applicable, it may also include information about your application's use of direct access to low memory addresses or about resources stored in the system heap.

The second step is to send your CCT file to Apple for analysis. The information gathered by the Carbon Dater tool is used to create a compatibility report for your application. Attach the CCT file as an email enclosure (preferably compressed) and send it to [CarbonDating@apple.com](mailto:CarbonDating@apple.com).

## Preparing Your Code for Carbon

**Important**

Carbon Dater does not expose any proprietary information about your product. The CCT file only lists calls to Mac OS functions and certain other potential compatibility issues. You can examine the CCT file to verify its contents.

## Reading the Report

---

The CCT file you send to Apple will be processed by an automated analysis tool. The analyzer compares the list of Mac OS functions your code calls against Apple's Carbon API database, and returns a report to you by email. This report is an HTML document that provides a snapshot of your application's Carbon compatibility level.

### Analysis of Imports

---

For each Mac OS function your code calls that is not fully supported in Carbon, the compatibility report specifies whether the function is

- supported but modified in some way from how it is used in previous versions of the Mac OS
- supported but not recommended—that is, you can use the function, but it may not be supported in the future
- unsupported
- not found in the latest version of Universal Interfaces

The report includes a chart that shows the percentages of Mac OS functions in each category. For many functions, the report also describes how to modify your application. For example, text accompanying an unsupported function might describe a replacement function or recommended workaround.

### Analysis of Access to Low Memory Addresses

---

This section of the compatibility report lists instances where your code makes a direct access to low memory. For information on how to access low memory correctly, see “Remove Direct Access to Low-Memory Globals” (page 29). If the tested code was built with symbolic debugging information enabled, the report specifies the names of the routines that access low memory directly.

### Preparing Your Code for Carbon

Many of the low-memory accessor functions currently defined in the Universal Interfaces are implemented as inline macros that insert load or store instructions directly in your code. Carbon Dater can't tell the difference between one of these macros and the code you wrote yourself, so you'll need to verify that you're using an approved accessor function.

### Analysis of Resources Loaded Into the System Heap

---

This section of the compatibility report lists resources that have their system heap bit set, indicating they should be stored in the system heap. For each flagged resource, the report lists the resource type and ID, as well as the resource name if one is available. Applications do not have access to the system heap in Mac OS X, so Carbon applications cannot store resources there.

### Additional Reports

---

You can obtain additional compatibility reports as often as you wish. This is a good way to see how much progress you've made in your porting effort. Also, as work on Mac OS X and Carbon continues, there may be changes in the level of support for some functions, which Carbon Dater may bring to your attention.

#### **Important**

The Carbon dating process cannot guarantee that your application is entirely compatible with Carbon and Mac OS X, even if your report lists no specific incompatibilities. For example, applications might access low memory in a way that is not supported but that cannot be detected by the compatibility analyzer.

### The Carbon Specification

---

To determine compatibility, Carbon Dater uses the Carbon Specification available at

<http://developer.apple.com/techpubs/carbon/>

You can browse this document for general compatibility information. Apple updates the Carbon Specification regularly to reflect the latest state of the Carbon APIs.



## Essential Steps for Porting Your Application

---

This section describes the bare minimum steps you must take to port your application to Carbon. Applications ported by following these instructions will run on Mac OS 8 and 9 and Mac OS X, but may not function optimally. To further improve performance and responsiveness, see the guidelines in “Optimizing Your Code for Carbon” (page 43).

In addition to reading this section, you should also read the information provided in “Additional Porting Issues” (page 33) before beginning to port your application.

### Make Sure All of Your Code Is PowerPC-Native

---

Because Mac OS X requires 100% native PowerPC code, you will need to remove any dependencies on 68K instructions. This applies to custom definition procedures (defprocs) and plug-ins as well as your main application. See “Custom Definition Procedures” (page 113) for information about new functions for creating native defprocs.

### Update to the Current Universal Interfaces

---

Your transition to Carbon will be easier if your application already compiles using the latest version of Universal Interfaces (as of this writing, the most recent version is 3.4). Although updating is not a requirement, doing so will minimize the number of compatibility problems. Once your project compiles without errors, you should switch to the Carbon headers provided with the Carbon SDK.

You’ll find the most recent Universal Interfaces on Apple’s website at

<http://developer.apple.com/sdk/>

## Preparing Your Code for Carbon

## Use the Carbon SDK

---

The Carbon SDK contains the headers, stub libraries, extensions and other material that you will need to build your Carbon application. You can download it from the following website:

<http://developer.apple.com/macosx/carbon/index.html>

## Target Mac OS 8 and 9 First

---

To ease the transition to Carbon, you should initially focus on getting your application running on Mac OS 8 and 9 with the CarbonLib extension. Then you can test your application on Mac OS X.

Note that just because your Carbon application runs on Mac OS 8 and 9, there is no guarantee that it will correctly run on Mac OS X. For example, Mac OS X is stricter about direct casting of types, so what is allowable on Mac OS 8 and 9 may not work on Mac OS X.

## Begin With CarbonAccessors.o

---

`CarbonAccessors.o` is a static library that may help ease your transition to Carbon by allowing you to begin using certain Carbon features while continuing to link against `InterfaceLib` and other non-Carbon libraries.

Because many toolbox data structures are opaque in Carbon, one of the first steps you should take in porting your application is to begin using the new accessor functions. It's easier to do this if you can continue compiling as a classic `InterfaceLib`-based application, because you can keep your application running and qualify your changes incrementally. `CarbonAccessors.o` facilitates this by providing implementations of the accessor functions for opaque toolbox data structures. For a list of the functions in `CarbonAccessors.o`, see Table A-3 (page 126).

We recommend that as the first step in the porting process, you add `CarbonAccessors.o` to your link, and then begin modifying your source code to use Carbon accessor functions, one file at a time. You can do this by setting the following conditional macro at the top of each source file you plan to convert:

```
#define ACCESSOR_CALLS_ARE_FUNCTIONS 1
```

## Preparing Your Code for Carbon

This conditional makes the prototypes for the accessor functions available to that source file.

When you have converted all of your source files to use accessor functions, you can add the following conditional macro to your build options to ensure that you are no longer directly accessing any opaque toolbox data structures:

```
#define OPAQUE_TOOLBOX_STRUCTS 1
```

At this point you have an application that uses the Carbon accessor functions but does not link against the Carbon libraries. You can continue to run and test your application on any Mac OS release, because it does not require the `CarbonLib` extension at runtime.

The next step in the conversion process is to allow only Carbon-compatible APIs in your code by adding the following conditional macro to your build options:

```
#define TARGET_API_MAC_CARBON 1
```

You can now begin modifying your code so that it no longer calls functions that are obsolete in Carbon. At this point you must stop linking against `InterfaceLib` (and `CarbonAccessors.o`) and begin linking against `CarbonLibStub` (that is, the `CarbonLib` shared library).

**Note:** You can also use `CarbonAccessors.o` to maintain some backwards compatibility with non-Carbon systems. For example, if you don't require functions that are available only in `CarbonLib`, by linking against the `CarbonAccessors.o` static library you can build an application from a Carbon-compliant code base that runs on non-Carbon systems.

## Use Casting Functions to Convert DialogPtrs and WindowPtrs

You cannot directly cast values of type `DialogPtr` or `WindowPtr` to a `GrafPtr`, but instead you must use the new functions described in “Casting Functions” (page 115). Direct casting will not affect compilation, but it will cause crashes on Mac OS X.

## Replace Macro Calls to the Mixed Mode Manager With UPP Accessor Functions

---

Carbon introduces significant changes to the Mixed Mode Manager. Static routine descriptors are not supported, and you must use the system-supplied functions for creating, invoking, and disposing of universal procedure pointers. For example, Carbon provides the following functions to replace the macros previously used to create, invoke, and dispose of universal procedure pointers:

```
ControlActionUPP NewControlActionUPP (ControlActionProcPtr userRoutine);
void InvokeControlActionUPP (ControlRef theControl,
                             ControlPartCode partCode
                             ControlActionUPP userUPP);
void DisposeControlActionUPP (ControlActionUPP userUPP);
```

Similar functions are provided for all supported UPPs. Note that Carbon does not support the generic functions `NewRoutineDescriptor`, `DisposeRoutineDescriptor`, and `CallUniversalProc`.

On Mac OS 8 and 9, the UPP creation functions allocate routine descriptors in memory just as you would expect. On Mac OS X, the implementation of UPPs depends on various factors, including the object file format you choose. Universal procedure pointers will allocate memory if your application is compiled as a CFM binary, but are likely to return a simple procedure pointer if your application is compiled as a Mach-O binary.

On Mac OS X, UPPs are opaque types that may or may not require memory allocation, depending on the particular function and the runtime they are created in. By using the system-supplied UPP functions, your application will operate correctly in either environment. You must dispose of your UPPs using the system-supplied functions to ensure that any allocated memory is released. See “Consider Mach-O Executables” (page 46) for more information about the differences between these formats.

Your own plug-ins must be compiled as PowerPC code, so there is no need to create universal procedure pointers for them. Use normal procedure pointers instead.

## Remove Direct Access to Low-Memory Globals

---

Low-memory globals are system and application global data located below the system heap in the Mac OS 8 and 9 runtime environment. They typically fall between the hexadecimal addresses \$100 and \$2800. Carbon applications can continue to use many of the existing low-memory globals, although in some cases the scope and impact of the global has changed. But in all cases, Carbon applications must use the supplied accessor routines to examine or change global variables. Attempting to access them directly with an absolute address will crash your application when running on Mac OS X.

The complete list of low-memory globals supported in Carbon is not yet finalized, but your transition to Carbon will be easier if you follow these guidelines:

- Use high-level calls instead of low-memory accessors whenever possible. For example, use `GetGlobalMouse` instead of `LMGetMouseLocation`.
- If a high-level call is not available, use an accessor function.
- Rely on global data only from Mac OS managers supported in Carbon. For example, because the driver-related calls in the Device Manager are not supported in Carbon, low-memory accessors like `LMGetUTableBase` are not likely to be available. Similarly, direct access to hardware is not supported in Carbon, so calls like `LMGetVIA` will no longer be useful.

Table 2-1 lists some frequently used low-memory accessors that are unsupported in Carbon. Refer to the Carbon Specification for the most recent information.

---

**Table 2-1** Summary of Carbon low memory accessor support

Accessor	Replacement
<code>LMGet/SetAuxCtlHead</code>	not supported
<code>LMGet/SetAuxWinHead</code>	not supported
<code>LMGet/SetCurActivate</code>	not supported
<code>LMGet/SetCurDeactive</code>	not supported
<code>LMGet/SetDABeeper</code>	not supported
<code>LMGet/SetDAStrings</code>	<code>GetParamText</code> , <code>ParamText</code>
<code>LMGet/SetDeskPort</code>	not supported
<code>LMGet/SetDlgFont</code>	not supported

**Table 2-1** Summary of Carbon low memory accessor support (continued)

<b>Accessor</b>	<b>Replacement</b>
LMGet/SetGhostWindow	not supported
LMGetGrayRgn	GetGrayRgn
LMGetMBarHeight	GetMBarHeight
LMSetMBarHeight	not supported
LMGet/SetMBarHook	not supported
LMGet/SetMenuHook	not supported
LMGetMouseLocation	GetGlobalMouse
LMSetMouseLocation	not supported
LMGet/SetPaintWhite	not supported
LMGetWindowList	GetWindowList
LMSetWindowList	not supported
LMGet/SetWMgrPort	not supported

## Use DebuggingCarbonLib

---

The debugging version of `CarbonLib` on Mac OS 8 and 9 checks for the validity of ports and windows, so using it is a good way to quickly identify potential problem areas. However, you should be aware that it runs considerably slower than the standard version of the library.

## Modify or Conditionalize Your Headers

---

If you plan to build your application on Mac OS X using Project Builder, be aware that the standard flat Mac OS 8 and 9 headers (such as `Dialogs.h` and `MacWindows.h`) do not correspond directly with Mac OS X frameworks. To address this issue, you can do either of the following:

- Add `-I /Developer/Headers/FlatCarbon` to the cc compiler command line when building your application. The files in the FlatCarbon folder act as a compatibility layer, mapping the standard flat header includes to the proper frameworks.
- Replace your flat headers with the single include statement `#include <Carbon/Carbon.h>`. This statement lets you access the Carbon framework directly. You should choose this method if you plan to build exclusively on Mac OS X, as it will improve compile times.

If you choose not to include the path to FlatCarbon at build time, you can also conditionalize your code to use the proper headers :

```
#if <Some flag for building on X is set>
    #include <Carbon/Carbon.h>
#else
    <The usual Mac OS 8 and 9 includes>
#endif
```

**Note:** `Carbon.h` is treated as a flat Mac OS 8 and 9 header, so the suggested workarounds will still apply.

## Update Modified or Obsolete Functions

---

From the list given to you by Carbon Dater, you should replace all functions listed as “out” or “modified” with their suggested replacements. Depending on the function it may have been easier to remove them earlier in the process (such as removing A5 functions when purging all 68K-related code).

## Adopt Required Carbon Technologies

---

Carbon requires you to replace some older system services with newer ones as follows:

- Navigation Services replaces the Standard File Package. For documentation, see the web site:  
<http://developer.apple.com/techpubs/carbon/Files/NavigationServices/navigationservices.html>
- The Carbon Printing Manager replaces the Classic Printing Manager. For documentation, see the web site:  
<http://developer.apple.com/techpubs/carbon/multimedia/CarbonPrintingManager/carbonprintingmgr.html>

## Add a 'plst' 0 Resource

---

On Mac OS X, Carbon applications that do not contain a 'plst' 0 resource will open in the Classic compatibility environment and will not gain all the advantages of Mac OS X. To ensure that Mac OS X properly recognizes your application, your application must include a resource of type 'plst' with ID 0 or a plist file in a bundle. You can also store additional information about your application in a plist resource or file. See “Consider Using Bundles” (page 47) for more information about plists and bundles.

**Note:** The 'plst' 0 resource supercedes the older 'carb' 0 resource. While you can continue to use the 'carb' 0 resource, the 'plst' 0 resource provides the exact same functionality while also allowing you to store additional information useful to the Mac OS X Finder.

## Conditionalize Quit Menu Items

---

Carbon applications running on Mac OS X automatically adopt the Aqua interface. Because Aqua provides a Quit menu item under the Application menu, your application does not need to add one to the File menu. As long as your application supports the Quit Apple event, it will quit normally. However, because the Mac OS 8 and 9 user interfaces still require a Quit menu item, you must conditionalize your code to add one in the File menu when running under Mac OS 8 or 9. The easiest



## Preparing Your Code for Carbon

way to identify the user interface is to check the `gestaltMenuMgrAquaLayoutBit` bit of the `gestaltMenuMgrAttr` gestalt selector. If the bit is set, the application is using the Aqua interface, and you should not add a Quit item to the File menu.

For example, you could use code such as the following to conditionalize your menus:

```
Gestalt( gestaltMenuMgrAttr, &result);  
if (result & gestaltMenuMgrAquaLayoutMask)  
    menuBar = GetNewMBar(rSysXMenuBar);  
else  
    menuBar = GetNewMBar(rMenuBar);
```

This method uses two different 'MBAR' resources, each with a different 'MENU' resource for the File menu.

If you must enable and disable the Quit menu item programmatically, you can use the new functions `DisableMenuCommand` and `EnableMenuCommand` to do so. Pass `NULL` for the menu reference and 'quit' for the command ID.

## Additional Porting Issues

---

In addition to the steps described in the “Essential Steps for Porting Your Application” (page 25), you should be aware of these other issues that can affect the porting process.

## Determine the Appropriate CarbonLib Version

---

Just like system software, `CarbonLib` also exists in various versions, each of which contains different levels of functionality. Because some calls to `CarbonLib` merely call through to the underlying system software, the functions available can depend on the system software version.

<b>CarbonLib version</b>	<b>Reflects Universal Interfaces version</b>	<b>Compatible back to</b>	<b>Notes</b>
1.0	3.3.1	Mac OS 8.1	<i>Shipped with Mac OS 9. Do not develop with this version.</i>
1.0.4	3.3.1	Mac OS 8.1	<i>Includes the following:</i> All Carbon APIs available with Mac OS 8.1 Toolbox accessor functions Control, Window, and Menu properties Appearance Manager 1.1 Navigation Services Core Foundation Carbon Printing Manager
1.2	3.4	Mac OS 8.6	<i>Adds the following:</i> DataBrowser Carbon Event Manager XML URL Access Manager Apple Type Services for Unicode Imaging (ATSUI) IB Carbon Runtime Font Sync

## Preparing Your Code for Carbon

CarbonLib version	Reflects Universal Interfaces version	Compatible back to	Notes
			Apple Help Viewer
			Font Management
		Mac OS 9	<i>Adds the following:</i> Keychain Manager

## Draw Only Within Your Own Windows

---

Because Mac OS X is a truly preemptive system, any number of applications may be drawing into their windows at the same time. Carbon applications, therefore, cannot draw outside their own windows. In the past you could call the `GetWMgrPort` function and use that port to draw anywhere on the screen. This port does not exist in Mac OS X, so you will need to use alternate methods to implement window dragging and resizing. For more detailed information about handling windows in Carbon, see “Window Manager Issues” (page 37).

## Do Not Patch Traps

---

Carbon applications should not patch traps because there is no trap table in Mac OS X. The Patch Manager is unsupported, and functions like `GetTrapAddress` and `SetTrapAddress` are not available in Carbon. You can, of course, conditionalize your code and continue to patch traps when running under Mac OS 9, but your programs will be much easier to maintain if you avoid patching entirely.

## Don’t Pass Pointers Across Processes

---

In Mac OS X, every process has its own address space, so attempting to pass a pointer to another process is meaningless at best and may cause your application to misbehave. Threads or tasks created by an application (for example, Multiprocessing Services tasks or Thread Manager threads) occupy the application’s address space, so you can pass pointers between them.

## Check Your OpenGL Code

---

If you use OpenGL in your application, you should continue to link to the `OpenGLLibrary`, `OpenGLMemory`, and `OpenGLUtility` stubs as you would for non-Carbon applications. On Mac OS X these functions will link with the OpenGL framework.

Note that if you are building a Mach-O-based Carbon application that uses the OpenGL header `aglMacro.h`, you must make the following call before creating any OpenGL contexts:

```
aglConfigure(AGL_TARGET_OS_MAC_OSX, GL_TRUE);
```

Do not make this call from CFM-based Carbon applications.

See “Consider Mach-O Executables” (page 46) for more information about the Mach-O format.

## Examine Your Plug-ins

---

Carbon applications can load non-Carbon plug-ins. You must make sure, however, that your plug-ins do not link to `InterfaceLib`. On Mac OS 8 and 9 this will not cause a problem, but it can cause a crash on Mac OS X (because `InterfaceLib` is unavailable).

You can use the MPW tool `DumpPEF` with the `-loader i library` option to find unintentional links to non-Carbon libraries.

## Linking to Non-Carbon-Compliant Code

---

In some cases, your CFM application may need to call code that is not Carbon-compliant to maintain cross-platform compatibility between Mac OS 8 and 9 and Mac OS X. For example, say your application makes calls to the Device Manager. The Device Manager is not part of Carbon as it cannot run on Mac OS X. However, its replacement, I/O Kit, is a Mac OS X technology that cannot run on Mac OS 8 and 9. The only way to maintain your application’s functionality is to fork your code and make calls to either the Device Manager or I/O Kit, depending on the platform.

## Preparing Your Code for Carbon

Forking your code in this manner brings up some build issues. For example, if you had set preprocessor directives to build with Carbon, the Universal Interfaces will conditionalize out any non-Carbon functions, and attempting to call non-Carbon functions will generate a compiler error indicating missing prototypes.

The easiest way to work around this problem is to compile your noncompliant code separately, using non-Carbon headers. You can package your non-Carbon code as a shared library, which you can then call from your application.

The safest method for calling non-Carbon functions in shared libraries is to prepare the fragment and locate the symbols manually. That is, call `GetSharedLibrary` to prepare the library and use `FindSymbol` to get the symbol address. You can then call the function through the returned pointer. This method gives you maximum flexibility in handling missing symbols or libraries. See the sample code included with the Mac OS X Developer Tools CD for examples.

## Window Manager Issues

---

This section addresses common issues encountered when porting code that draws or otherwise manipulates windows.

### Handling Buffered Windows

---

In Mac OS X, all windows are buffered. A window's contents are written first to a buffer and then the Window Manager periodically refreshes the screen with the contents of the buffers. As you don't automatically have control over when a window's contents are written to the screen, you may need to make some minor changes to your windowing code to account for buffering.

If you are writing periodically to the screen in a loop that doesn't call `WaitNextEvent`, you must call `QDFlushPortBuffer` to flush your drawing to the screen. Otherwise, you are only updating the contents of the buffer.

## Preparing Your Code for Carbon

If you draw directly into a window's pixel map, QuickDraw cannot tell which parts of the pixel map are dirty. To work around this, you must do one of the following:

- Call `QDFlushPortBuffer` explicitly, passing a nonempty region parameter describing the modified area.
- Call `QDGetDirtyRegion` to get the port's dirty region, add in the area you modified by calling `UnionRgn`, and then set the updated dirty region by calling `QDSetDirtyRegion`. The Window Manager will update the region during the next call to `WaitNextEvent`.

If you draw directly into the pixel map of your windows without using QuickDraw, you'll need to wrap those blits with two new calls that signal the Window Manager not to update the window until your drawing operation completes. Here are the basic steps:

1. Use the `GetWindowPort` function to get the window's port.
2. Use the `LockPortBits` function to lock the port's pixel map. Note that this function is different from `LockPixels`; they are not interchangeable.
3. Use the `GetPortPixMap` function to get a handle to the port's pixel map. The `baseAddr` field of the `PixMap` structure contains the base address of the actual port bits in memory.

**Important**

The port address is valid only after you've locked the port using the `LockPortBits` function, and is invalid after you call the `UnlockPortBits` function.

4. Perform your drawing operation as quickly as possible. Because the `LockPortBits` function blocks all other updates to the port, it's important that your drawing code be small and fast to avoid impacting system performance.
5. Call the `UnlockPortBits` function to release the port. The `PixMapHandle` is automatically disposed when you call this function. Do not attempt to reuse the handle.

Note that the `UnlockPortBits` function does not initiate a window update, it merely allows any pending or future updates to occur. An update is initiated either by the `BeginUpdate/EndUpdate` routines or when the `QDFlushPortBuffer` function is called.

## Bypassing the Window Manager Port

---

Prior to Carbon and Mac OS X, any Mac application could access the Window Manager port, which included all available screens. Using that port, an application could write directly to the screen on top of all windows. Developers used this capability to implement a number of features, such as custom window grow outlines and custom window dragging.

Because recent releases of Mac OS 8 and 9 offer improved Window Manager functionality, as well as robust drag-and-drop support through the Drag Manager, many applications no longer need to use the Window Manager port. This is a good thing, because in Mac OS X, there is no Window Manager port, and Carbon provides no access to the Window Manager port for applications running in Mac OS 8 and 9.

The Carbon Window Manager does supply alternate mechanisms to implement features that may have relied on use of the Window Manager port. To learn more about when to use these mechanisms, see “Window Dragging and Resizing Q&A” (page 39).

If your application is drawing in the Window Manager port and you don’t see an alternate mechanism described, you should consider whether you can achieve the same results by modifying your user interface. If that’s not appropriate, send an email to [carbon@apple.com](mailto:carbon@apple.com) explaining what you need and some APIs may be added to support additional features.

## Window Dragging and Resizing Q&A

---

This section answers some frequently asked questions about dragging and resizing windows in Carbon and Mac OS X. For related information, see “Bypassing the Window Manager Port” (page 39).

- Q. What is the standard window dragging feedback supplied by `DragWindow`?
  - A. In Mac OS X, if you call `DragWindow` for a buffered window, the Carbon Window Manager provides live dragging—that is, the contents of the window remain visible as a user moves the window around the screen.

For a Carbon application running in Mac OS 8 or 9, `DragWindow` supplies the traditional outline feedback.

## Preparing Your Code for Carbon

■ Q. Can I still use `DragGrayRegion`?

A. Although `DragGrayRegion` is fully supported in Carbon, it only applies to the current port. If you're currently using `DragGrayRegion` with the Window Manager port, you should instead use one of the other mechanisms described here, such as calling `DragWindow` or using Carbon event handlers.

## ■ Q. How do I implement custom window dragging—for example, to modify the position and shape of a tool palette as the user moves it to dock with another palette?

A. You can implement features of this type using a Carbon event handler that tracks move events. When a user starts to drag a window, your handler receives a move window event (`kEventWindowOriginChange`). If you so request, your event handler can also receive periodic move window events as the user continues to drag the window. When the user completes the move, your handler receives a window moved event that includes the final position of the window. Your handler should get the `kEventParamCurrentBounds` parameter from the event, modify the `Rect` structure as needed, update the parameter, and then return `noErr`. In the example of docking a palette to another palette, you can either make changes to the palettes during the move as the current position warrants, or you can modify them after the move is complete.

Keep in mind that using a move event handler that receives and processes events during the move may have an impact on performance.

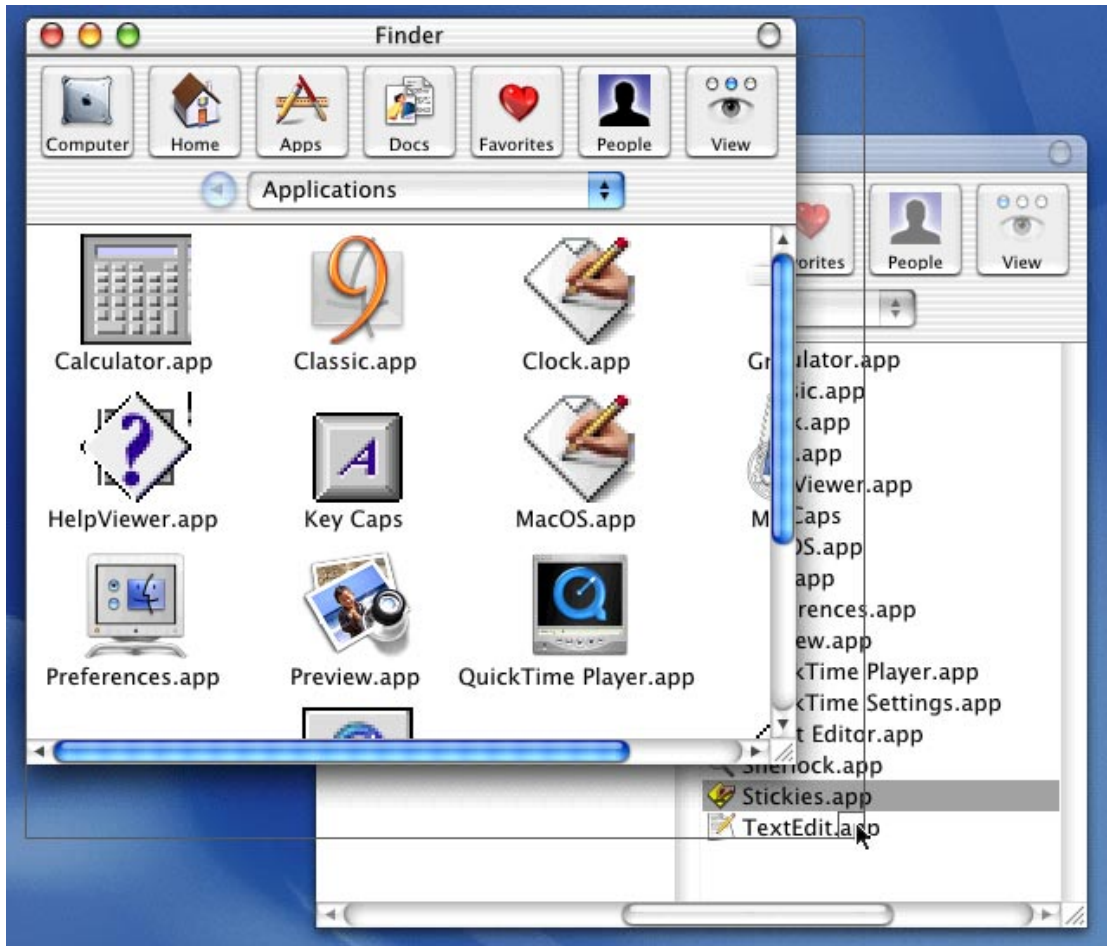
The Carbon Window Manager may also support custom dragging as part of an API to be added later. However, in Mac OS X this approach would only provide outline feedback for the drag, rather than live feedback.

■ Q. What is the standard window resizing feedback supplied by `GrowWindow`?

A. If you do not supply a resize event handler (described in another question), `GrowWindow` provides the traditional outline feedback.

Figure 2-1 shows the traditional outline feedback for resizing a window.



**Figure 2-1** Outline feedback as a user resizes a window

■ Q. How do I take advantage of live resizing in Mac OS X?

A. If you want live resizing in Mac OS X—that is, the contents of a window remain visible and are adjusted and redrawn as needed as a user resizes the window—you must set the `kWindowLiveResizeAttribute` attribute on the window (either at creation time using `CreateNewWindow` or `CreateCustomWindow`, or by calling `ChangeWindowAttributes` on an existing window) and then provide a resize event handler. The Carbon Window Manager sends an event

## Preparing Your Code for Carbon

(`kEventWindowBoundsChanged`) to your handler that indicates when it should adjust its scrollbars, redraw its content, and so on, as the user resizes the window.

Carbon applications running in Mac OS 8 and 9 will only get outline resizing.

- Q. How do I implement custom window resize feedback—for example, to make the window snap to a grid as a user resizes the window?

A. You can implement custom resizing using the same Carbon event handler you use to support live resizing. When a user starts to resize a window, your handler receives a resize window event (`kEventWindowBoundsChanged`). Your handler also receives periodic events as the user continues the resize. When the user completes the resize, your handler receives a window resized event that includes the final size. You can modify the `kEventParamCurrentBounds` parameter to constrain resizing to the desired grid as the user resizes, or do so after the resize is complete.

If you are already using a custom window definition (WDEF) and you do not need live resizing, the easiest way to provide custom resize feedback is to support the new WDEF message `kWindowMsgGrowImageRegion`. Your WDEF receives this message periodically as the user moves the mouse during a resize operation. You can use this message to override the region that gets displayed during resize. To get these messages, your WDEF must report the `kWindowSupportsSetGrowImageRegion` feature bit.

- Q. Do I need to make any other changes to my existing WDEF?

A. In most cases, you should not have to change your custom window definition. Prior to Carbon and Mac OS X, custom window definitions expected to draw directly in the global port. Now the Carbon Window Manager automatically sets up an appropriate port for drawing. When your window definition gets a draw message, it can go ahead and draw—but it shouldn't assume it's drawing in a global port, because it isn't.

- Q. I use the Window Manager port to implement custom dragging with translucent drag images. How do I keep my translucent drag images without the Window Manager port?

A. The Drag Manager has supported translucent dragging since version 1.3 and System 7.5.3. This feature is fully supported in Carbon, so you don't need to write any custom code.

## Preparing Your Code for Carbon

- Q. How can I capture a region of the current global screen?

A. There is currently no way to do this in Carbon, although we are considering providing an interface that will allow you to grab an arbitrary screen region.

You should not rely on calling `CreateNewPort` and determining the location of the screen bits from the new port. This behavior is no longer supported and code that relies on it is likely to break in future versions of Mac OS X.

- Q. How can I write a screen saver or other application that needs to take over the whole screen?

A. Use the QuickTime functions `BeginFullScreen` and `EndFullScreen`. For more information, see the QuickTime documentation at

<http://developer.apple.com/techpubs/quicktime/quicktime.html>

- Q. I don't want to modify my user interface and I don't see anything described here that will help me do what I want to do.

A. Tell us what you need and why, so that we can help provide a solution.

## Optimizing Your Code for Carbon

---

This section describes steps and issues you should consider for your application to take best advantage of the Mac OS X environment.

### Manage Memory Efficiently

---

Memory management doesn't change much for Carbon applications running on Mac OS 9. You'll need all the code you use today to handle heap fragmentation, low memory situations, and stack depth.

However, there are some techniques you can adopt now that will help your application perform well when running on Mac OS X, which uses an entirely different heap structure and allocation behavior. The most significant change is in determining the amounts of free memory and stack space available. For example,

## Preparing Your Code for Carbon

you should avoid preallocating memory, as doing so will not make best use of the allocators available in Mac OS X. Similarly, using suballocators (allocating a block of memory and then allocating from within the block) is not suggested.

The functions `FreeMem`, `PurgeMem`, `MaxMem`, and `StackSpace` are all included in Carbon. You should, however, think about how and why you are using them. You'll probably want to consider additional code to better tune your performance.

The `FreeMem`, `PurgeMem`, and `MaxMem` functions behave as expected when your Carbon application is running on Mac OS 9, but they're almost meaningless when it's running on Mac OS X, where the system provides essentially unlimited virtual memory. Although you can still use these calls to ensure that your memory allocations won't fail, you shouldn't use them to allocate all available memory. Allocating too much virtual memory will cause excessive page faults and reduce system performance. Instead, determine how much memory you really need for your data, and allocate that amount.

Before Carbon, you would use the `StackSpace` function to determine how much space was left before the stack collided with the heap. This routine could not be called at interrupt time, but was useful for preventing heap corruption in code using recursion or deep call chains. But because a Carbon application may have different stack sizes under Mac OS 9 and Mac OS X, the `StackSpace` function is no longer very useful. You shouldn't rely on it for your logic to terminate a recursive function. It might still be useful as a safety check to prevent heap corruption, but for terminating runaway recursion, you should consider passing a counter or the address of a stack local variable instead of calling `StackSpace`.

The Carbon API does not include any subzone creation or manipulation routines. If you use subzones today to track system or plug-in memory allocations, you must use a different mechanism. For plug-ins, you might switch to using your own allocator routines. To prevent memory leaks, make sure all your allocations are matched with the appropriate dispose calls.

The Carbon API also removes the definition of zone headers. You can no longer modify the variables in a zone header to change the behavior of routines like `MoreMasters`. Simply call `MoreMasters` multiple times instead, which will allocate 128 master pointers each time. (You can also use the new Carbon call `MoreMasterPointers`, which allows you to specify the number of master pointers to allocate in one relocatable block.)

## Avoid Polling and Busy Waiting

---

Polling for events or using a timer loop is allowable (but not recommended) on Mac OS 9, but it can cause severe performance problems on Mac OS X. In the Mac OS X multitasking environment, the OS gives time to all active processes. A process that is busy waiting for an event is considered active, even though it is not actually doing anything. Such waiting reduces the performance of other active processes. As an extreme example, multiple instances of a shared library, all polling for an event, can easily bog down the system. Instead of polling, your code should implement some sort of notification mechanism (such as an event queue or semaphore).

Note that triggering actions on null events (to blink the cursor, for example) does not work on Mac OS X, as the system will notify your application only when real events occur. To work around this issue you should use Carbon Event Manager timers.

## Use “Lazy” Initialization for Shared Libraries

---

To allow Mac OS X to manage memory efficiently, you should not prepare shared libraries at application launch time, but rather only when you need them. Also, try to avoid using initialization functions if possible. See *Mac OS Runtime Architectures* for more information about initialization functions.

## Adopt HFS Plus APIs

---

HFS Plus, the Mac OS Extended File Format, is the default file system for Mac OS X, so you should consider using HFS Plus APIs if you need to programmatically access files on hard drives. Some of the advantages of HFS Plus are as follows:

- support for long Unicode filenames (255 characters)
- support for files larger than 2 GB
- support for extended file attributes

See the File Manager documentation at

<http://developer.apple.com/techpubs/carbon/Files/FileManager/filemanager.html>

for more information about HFS Plus.

## Consider Mach-O Executables

---

You can build Carbon applications in two object file formats: PEF, which uses the Code Fragment Manager introduced with PowerPC Macintosh computers, and Mach-O, which is the preferred format for Mac OS X. Depending on your needs, you may want to consider creating Mach-O-based Carbon applications. There are advantages and disadvantages.

Advantages:

- Applications get access to all native Mac OS X APIs such as Quartz and POSIX. CFM-based Carbon applications can access only Carbon APIs.
- Symbolic debugging is easier on Mac OS X (using GDB).
- You can take full advantage of the Interface Builder and Project Builder development tools on Mac OS X.

Disadvantages:

- Applications cannot run on Mac OS 8 and 9.
- Mach-O doesn't support the existing CFM plug-in architecture.
- Programmatic manipulation of the Code Fragment Manager (for example, calling `GetSharedLibrary`) may not work as expected.

You can also package CFM-based code and Mach-O-based executables together in bundles (as described in “Consider Using Bundles” (page 47)). Bundling creates file packages analogous to PowerPC/68K fat applications built during the transition to PowerPC. Such CFM/Mach-O packages will execute the CFM version of the application on Mac OS 8 and 9, and the Mach-O version on Mac OS X. See *Inside Mac OS X: System Overview* for more information about the Mach-O format.

Eventually, as customer focus shifts to Mac OS X, you should concentrate on building Mach-O binaries.

## Move Resources to Data Fork–Based Files

---

While Mac OS X can handle application resources stored in the resource fork of an executable file, in general you should begin storing these resources in the data fork. The major reason for doing this is to maximize compatibility when moving files

## Preparing Your Code for Carbon

between different file systems. Many computing environments and file copying tools recognize only single-fork files; copying uncompressed files usually results in the loss of any information stored in the resource fork.

The only exceptions at this time are the 'cfrg' 0 and 'plst' 0 (or 'carb' 0) resources, which must remain in the resource fork for CFM-based applications so the Mac OS X Finder can launch them properly.

In general you should use the Core Foundation CFBundle APIs to package and access resources in the data fork. While you can simply move your existing resource files to the data fork, a better solution is to save each resource as an individual data fork-based file. Doing so makes it much easier to access (and perhaps modify) any individual resource.

See “Consider Using Bundles” (page 47) and *Inside Mac OS X: System Overview* for more information about bundling resources.

## Consider Using Bundles

---

A bundle is a Mac OS X concept that lets you store all the software resources and executable files that an application requires in one package. Essentially a directory or folder hierarchy, a bundle could contain any of the following:

- images, sounds, or other files used by the application
- localized character strings
- multiple executable versions of an application.

A bundle can contain multiple sets of resources, grouped by language, locale, and platform. By combining all these resources and executables in one package, you can create one version of your application that is localized for multiple languages and can run on multiple platforms.

On Mac OS X, a bundle hierarchy normally appears as a single file, unless the bundle bit is unset, in which case it appears as a folder hierarchy.

On Mac OS 8 and 9, a bundle appears as a folder hierarchy, because the system software does not have knowledge of bundles. For this reason you should generally place an alias to your application prominently in the top level folder where the user can find it.

## Preparing Your Code for Carbon

For maximum compatibility, you should use the Core Foundation CFBundle APIs to access bundled resources and executable files. See the Core Foundation Bundle Services documentation at

<http://developer.apple.com/techpubs/corefoundation/BundleServices/CFBundleServices/index.html>

Note that if you do not wish to adopt bundles at this time, you can include some of the information stored in a bundle's `Info.plist` file in a resource of type 'plist' with ID 0. Doing so allows you to specify attributes that provide information to the Finder (for example, what icons to use, what document types the application recognizes). You can also access data in the 'plist' resource using Resource Manager or CFBundle APIs.

See *Inside Mac OS X: System Overview* for more specific information about packaging files in bundles.

## Begin Transitioning to the Aqua Interface

---

By linking with CarbonLib, your Carbon application will automatically register itself with the Appearance Manager and adopt the basic Aqua look and feel. You should make sure that your interface elements are Appearance Manager-compliant; generally this means using system-defined controls, menus, and windows as much as possible.

To provide the best user experience, however, you should take the additional time to modify dialog boxes, windows, icons, controls, and so on, to conform with the Aqua specification. Doing so ensures that your application will look its best on Mac OS X. For details, see the document *Aqua Human Interface Guidelines* available at

<http://developer.apple.com/techpubs/macosx/>

For additional information on icons, see “Provide Thumbnail Icons for Your Application” (page 49).



## Preparing Your Code for Carbon

You should also consider adding some new interface elements introduced with Aqua, such as the following:

- **Sheets:** Sheets are the new window-centric modal dialogs that slide down from the title bar. Sheet functions appear in `MacWindows.h`.
- **Help Tags:** A help tag is a little yellow text field that appears over a control when you roll the cursor on top of it. The tag typically describes or clarifies the control's purpose. Help tags replace the Help balloons available on older Mac OS systems. Help tag functions appear in `MacHelp.h`.

---

## Adopt a Terse Name for the Application Menu

The leftmost pull-down menu in Mac OS X is the application menu. To maximize space for other menus, you should adopt a short version of your application name (16 characters or less) for this menu. You should add this information in your application's `InfoPlist.strings` file.

---

## Provide Thumbnail Icons for Your Application

The information in this section supplements the document "Obtaining and Using Icons With Icon Services," available at the Carbon documentation website at

<http://developer.apple.com/techpubs/carbon/>

In Mac OS X, a user may choose to display very large icons for the desktop, the application Dock, and so on. The Finder uses a high-quality scaling algorithm, supplied by Icon Services, to generate the variable-sized icons it needs. To help ensure a pleasing result for your application, you should provide a thumbnail icon and a thumbnail mask as part of the 'icons' resource for your icon family. Figure 2-2 shows the icon family, including thumbnail icons, for `Classic.app` in Mac OS X.

**Figure 2-2** Thumbnail icons in a .icns file, displayed in Icon Browser

A thumbnail icon is 128x128 pixels with 32-bit depth. A thumbnail mask is 128x128 pixels with 8-bit depth (there is no one-bit mask for a thumbnail). Within an icon family resource, you specify thumbnail elements with the following constants:

```
enum {
    kThumbnail32BitData    = 'it32',
    kThumbnail8BitMask     = 't8mk'
};
```

You can use these icon types only for an icon element within an 'icns' icon family, not for an individual icon or icon mask resource.

## Preparing Your Code for Carbon

Your application can continue to provide small (16x16) and large (32x32) icons as a complement to its thumbnail icons, especially if you need to preserve certain fine details at smaller resolutions. Icon Services will pick the best available icon for a particular size, so providing additional icons gives it more flexibility and gives you more control.

As of this writing, some third-party resource editor applications support editing of thumbnail icons, so you can investigate to determine which one best meets your needs.

If you want to add a thumbnail icon or mask to an icon family yourself, you can do so with the Icon Services function `SetIconFamilyData`.

```
pascal OSErr SetIconFamilyData (
                                IconFamilyHandle iconFamily,
                                OSType iconType,
                                Handle h)
```

`iconFamily`

A handle to an `iconFamily` data structure to be used as the target.

`iconType`

A value of type `OSType` specifying the format of the icon data you provide. For a thumbnail icon, for example, you specify `kThumbnail32BitData` in this parameter. For a thumbnail mask, you specify `kThumbnail8BitMask`.

`h`

A handle to the icon data you provide. For a thumbnail icon, the handle contains raw image data in the form of 128x128, four bytes per pixel, RGB data. For a thumbnail mask, the data is in the same format except that it is one byte per pixel.

When you are finished constructing the icon family, you can write it to a file with the `WriteIconFile` function. For more information on these functions, see the document “Obtaining and Using Icons With Icon Services.”



# Building Carbon Applications

---

This chapter describes how to use the tools and libraries provided with the Mac OS X Developer Tools CD to build Carbon applications for both Mac OS 9 and Mac OS X. You can also install the Carbon system extension, *CarbonLib*, to run Carbon applications on Mac OS versions 8.1 and later.

## Native Mac OS 9 Versus Mac OS X's Classic Environment

---

If you plan to build, run, and debug Carbon applications for both Mac OS 9 and Mac OS X on a single system, the Mac OS X application *Classic.app* provides a convenient environment for running your development system. You can easily switch between the two environments, and launch applications in either.

For performance reasons, however, you may prefer to develop on a native Mac OS 9 system (that is, on a computer running Mac OS 9 instead of Mac OS X), as your development tools are likely to run somewhat slower in the Classic environment. In this case you'll need to reboot to run Mac OS X and test your Carbon application in that environment.

## Building Carbon Applications

If you have two computers, you might want to run Mac OS 9 on one computer and Mac OS X on the other. To transfer files between them, you can use one of the following methods:

- Enable file sharing on one of the machines and copy the files directly.
- Copy the files using FTP.
- Activate the Metrowerks remote debugger and select “Debug”. (Doing so transfers the file to Mac OS X and begins a debugging session. After transfer, you can quit the debugging session, leaving the file ready for launch, or perhaps GDB debugging.)

## Development Scenarios

---

There are a number of tools and processes you can use to build and debug Carbon applications. This section describes three scenarios that Apple recommends, and the advantages of each.

### Using CodeWarrior to Build a CFM Carbon Application

---

This is the most likely scenario if you’re porting an existing Mac OS 9 application to Carbon, especially if you’re already using CodeWarrior. You’ll continue to use the Mac OS development tools and processes you’re familiar with, and you’ll create CFM applications that can run on both Mac OS 9 and Mac OS X. The only difference is that you’ll include the `CarbonLib` stub library in your CodeWarrior project.

### Using CodeWarrior to Build a Mach-O Carbon Application

---

Metrowerks has developed a cross-compiler that you can use to build Mach-O applications with CodeWarrior on Mac OS 9. You may want to create a Mach-O version of your application in order to debug it on Mac OS X using Project Builder. However, if you have a second computer, you may want to investigate whether

## Building Carbon Applications

Metrowerks' two-machine debugger better suits your needs, as it can debug CFM applications on both platforms. Contact Metrowerks for information about these products.

## Using Project Builder to Build a Mach-O Carbon Application

---

Project Builder is Apple's integrated development environment (IDE) for Mac OS X. It offers a comprehensive feature set that includes source-level debugging. Project Builder is a good choice if your application will run only on Mac OS X, and you want to take advantage of features available only on that platform. However, you can't use Project Builder to build a CFM application, so if you want your program to run on both platforms you'll either need to use CodeWarrior or other tools to create a CFM version for Mac OS 9.

See the Project Builder online help documentation for more information about creating Mach-O Carbon applications.

## Building a CFM Carbon Application With CodeWarrior

---

If you plan to use Metrowerks CodeWarrior, CodeWarrior Pro version 4.0 or later is recommended.

You can run CodeWarrior on either a native Mac OS 9 system or in the Classic environment on Mac OS X. You must install CodeWarrior on a disk or partition that uses the HFS Plus volume format ("Mac OS Extended") if you plan to run CodeWarrior in the Classic environment.

## Preparing Your Development Environment

---

Before you start Carbon development with CodeWarrior, you'll need to install the tools and libraries provided with the Mac OS X Developer Tools CD or the Carbon SDK.

1. Copy the Carbon Support folder to the Metrowerks CodeWarrior folder on your hard disk. The Carbon Support folder should reside in the same folder as the CodeWarrior IDE application.
2. Copy the appropriate Carbon system extension (`CarbonLib` or `DebuggingCarbonLib`) from the Carbon Support:CarbonLib folder to your Extensions folder. You should keep only one Carbon extension in your Extensions folder at any time.
  - `CarbonLib` is the standard implementation of Carbon for Mac OS 8.1 or later.
  - `DebuggingCarbonLib` is a debugging version of `CarbonLib`.
3. `CarbonLib` is included in all versions of Mac OS 9 as well as the Classic environment on Mac OS X. However, to make sure you are using the latest version, you should replace the default `CarbonLib` with the latest one available (in this case version 1.2).
4. To avoid the potential for data loss in the event that you need to reinstall Mac OS X, ensure that your CodeWarrior project files and source code reside on a separate hard disk.



## Building Your Application

---

To build a Carbon version of your application, you'll need to make the following changes to your CodeWarrior project.

1. Add the following statement to one of your source files before including any of the Carbon headers:

```
#define TARGET_API_MAC_CARBON 1
```

This conditional specifies that the included header files should allow only Carbon-compatible APIs and data structures. You can include the conditional in a prefix file if you wish.

**Note:** Moving a project from CodeWarrior Pro 4.0 to an earlier CodeWarrior version will result in the loss of prefix file information in the C/C++ Language Preferences panel. Many of the code samples on the Mac OS X Developer Tools CD make use of a prefix file (usually `CarbonPrefix.h`) to define `TARGET_API_MAC_CARBON`, so if you try to build a sample on an older CodeWarrior system, you may need to reinstate the prefix file information.

2. Add the `CarbonLibStub` stub file to your project.
3. Ensure that your project is not linking to any libraries that are not Carbon compatible. For example, the MPW ANSI C library is not Carbon compatible. Note that you should not directly link to `InterfaceLib` when you are linking with `CarbonLib`. On Classic Mac OS, `CarbonLib` will return an error to the Code Fragment Manager if your application attempts to link to both `CarbonLib` and `InterfaceLib`, causing the application launch to fail.
4. Ensure that your CodeWarrior access paths and other target settings are correctly specified. See the sample code included with the Carbon SDK for examples of how to do this.

## Running Your Application on Mac OS 9

---

You can launch your application from the Finder on a Mac OS 9 system by double-clicking its icon. To run Carbon applications on Mac OS 8 (version 8.1 or later), you must install the `CarbonLib` or `DebugCarbonLib` extension in the Extensions folder.

## Running Your Application on Mac OS X

---

As long as your application resides on an HFS Plus disk, you can launch it by double-clicking its icon. You cannot launch applications from a standard HFS format disk on Mac OS X.

You can also use the command-line tool `LaunchCFMApp` to launch CFM applications from a terminal window in Mac OS X. If the CFM application is in the current working directory, the command is:

```
/Developer/Tools/LaunchCFMApp filename
```

If the application is in a different directory, you must specify the path.

Note that if your application does not contain a 'plist' resource, a bundled `Info.plist` file, or a 'carb' resource, Mac OS X opens the application in the Classic compatibility environment. To ensure that Mac OS X properly recognizes your application, it must include a resource of type 'plist' with ID 0, a bundled `Info.plist` file, or a resource of type 'carb' with ID 0.

## Building a Mach-O Carbon Application With CodeWarrior

---

Before building a Mach-O version of your application with CodeWarrior, you should follow the instructions in the previous section for building a CFM Carbon application. After you've successfully built and tested a CFM version of your application on Mac OS 9, you can use CodeWarrior to build a Mach-O version for debugging on Mac OS X.

## Preparing Your Development Environment

---

To build a Mach-O application with CodeWarrior, you'll need to install the Mach-O cross-compiler tools available from Metrowerks.

## Building Your Application

---

Refer to your Metrowerks CodeWarrior documentation for instructions on using the Mach-O cross-compiler.

## Running Your Application on Mac OS X

---

CodeWarrior creates an executable Mach-O binary that includes a resource fork. As long as this file resides on an HFS Plus disk, the resource fork remains intact and you can launch the application by double-clicking its icon.

# Building a Mach-O Carbon Application With Project Builder

---

Project Builder is included on the Mac OS X Developer Tools CD. Instructions for building Mach-O Carbon applications are available in Project Builder's online help documentation.

## Building Applications Using MPW

---

An alternative to using CodeWarrior or ProjectBuilder for CFM applications is to use Apple's MPW development environment, which is now available as a free download from the following website:

<http://developer.apple.com/tools/mpw-tools/>

You should place the `CarbonLibStub` stub file in the folder `Interfaces` and `Libraries:Libraries:SharedLibraries`, while the Carbon version of the Universal Headers should be placed in `Interfaces` and `Libraries:Interfaces:CIncludes`.

## Building Carbon Applications

You compile your application and link against `CarbonLibStub` just as you would when using CodeWarrior. Note however that Carbon applications must contain a 'SIZE' resource, and the resource must have the `acceptSuspendResumeEvents` flag set. While CodeWarrior adds a 'SIZE' resource automatically, you must create your own when building with MPW.

In addition, you need to override your default entry point (by using the `-m` option in PPCLink) with one of the following:

- `main` if your application does not call `exit()` and does not expect any exit procedures to run.
- `__appstart` if you want the functionality previously supplied by `__start`. `__appstart` is a stripped-down version of `__start` that initializes the environment, but does not provide support for MPW tools. To use `__appstart`, you need to link with `StdCRuntime.o` and `StdCLib` in addition to `CarbonLib`.

The version of `StdCRuntime.o` containing `__appstart`, as well as a Carbon-friendly version of the CreateMake tool, will be available from the following web site:

<http://developer.apple.com/tools/mpw-tools/updates.html>

You should also examine the PackageTool sample application in the Sample Code folder of the CarbonLib SDK and the MPW release notes for more specifics about the build process.

## Debugging Your Application

---

You can debug Carbon applications on Mac OS 9 using the Metrowerks debugger. You can use this debugger with two networked machines, one running Mac OS 9 and the other running Mac OS X. Contact Metrowerks for more information.

You can also debug Carbon applications on Mac OS X using GDB, which you can run from a terminal window. Although GDB cannot directly debug a CFM application at this time, there is a workaround that lets you perform low-level debugging on a CFM application. You'll use GDB to debug `LaunchCFMApp`, a Mach-O program that launches CFM applications.

## Building Carbon Applications

This workaround has the following features and limitations:

- You can set breakpoints at Mach-O functions. Since the Carbon library is Mach-O code, you can set breakpoints at Carbon functions. However, you cannot set breakpoints at CFM functions, including those in your application.
- You can examine the memory contents at any address with the `x` command. However, you cannot view variables or expressions, since GDB cannot use the symbol names in a CFM application.
- You cannot step through your application's code.

To debug your CFM application:

1. **Launch the Terminal application:** `/Applications/Utilities/Terminal.app`.
2. Enter `gdb /Developer/Tools/LaunchCFMApp`.

GDB loads the `LaunchCFMApp` program.

3. If you want, set breakpoints at any Carbon function with the `br` command.

For example, you may want to set a breakpoint at the `DebugStr` function, because `DebugStr` prints its argument without stopping the program's execution. Enter `br DebugStr` at the GDB prompt.

4. At the GDB prompt, enter `r <app-pathname>`, where `<app-pathname>` is the full pathname for your CFM application.

To enter the application's pathname, drag the application's icon to the Terminal window.

`LaunchCFMApp` launches your application.

To pause your application's execution at any time, press Control-C in the Terminal application. To continue your application, enter `cont`. For more information on GDB, enter `help`.

Here are some additional hints that you might find useful:

- From the terminal window, entering `setenv CFMDebugFull 1` directs `LaunchCFMApp` to display debugging information at application launch time.
- Entering `setenv USERBREAK 1` enables GDB to catch C++ exceptions.

## Building Carbon Applications

- You can set the environment variable `DYLD_IMAGE_SUFFIX` to specify an optional suffix to add to Mach-O libraries when they are loaded. For example, entering `setenv DYLD_IMAGE_SUFFIX _debug` provides an easy way to link to the debug versions of the various frameworks. You can easily toggle between the normal and debug versions of these libraries without having to rebuild your application each time. The debug versions often perform more assertions, parameter checks, and so on, which may simplify debugging.
- You can call functions in Mach-O libraries directly from the GDB command line, as long as they were explicitly or implicitly loaded. For example, you could call the `CFSHow` function, which shows the contents of various Core Foundation and Cocoa objects. Because the Carbon framework is built as Mach-O binaries, you can call Carbon functions from GDB, even those not directly called by your application.
- The remote debugger nub has some command line options which you can view by entering `/usr/libexec/gdb/DebugNub -help`
- If you want to examine parameter values for CFM applications in GDB, you can do so by examining register values. For example, given a function

```
void loofah (int x, int y, int z);
```

then `print $r3` from the GDB command line obtains the value of `x` (passed in GPR3). Remember that the usual calling conventions apply in determining which parameters are passed in which registers. See *Mac OS Runtime Architectures* for more information about PowerPC calling conventions.

# A Porting Example

---

This chapter details the process required to port a simple application to the Carbon interface. While this application is likely much simpler than your code, many of the steps are similar and you can use this example as a guideline for porting your own application.

## The Sample Application

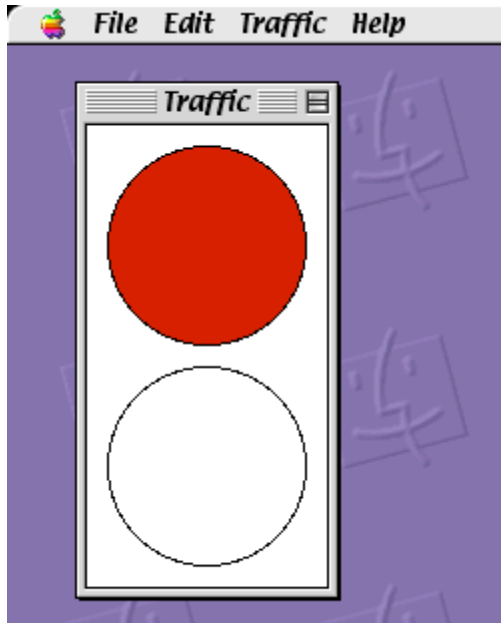
---

The application used for this porting example is Sample (also known as TrafficLight), which is an old Mac OS demonstration program used to illustrate basic windowing and user interaction. You can find Sample at the following website:

[http://developer.apple.com/samplecode/Sample\\_Code/Overview/Sample\\_\\_Traffic\\_Light\\_.htm](http://developer.apple.com/samplecode/Sample_Code/Overview/Sample__Traffic_Light_.htm)

The original C code listing is also reproduced in Appendix B.

Sample puts up a small window containing a rudimentary traffic light which toggles between red and green when you click in the window or when you select a color from the Light menu. Figure 4-1 shows the Sample application.

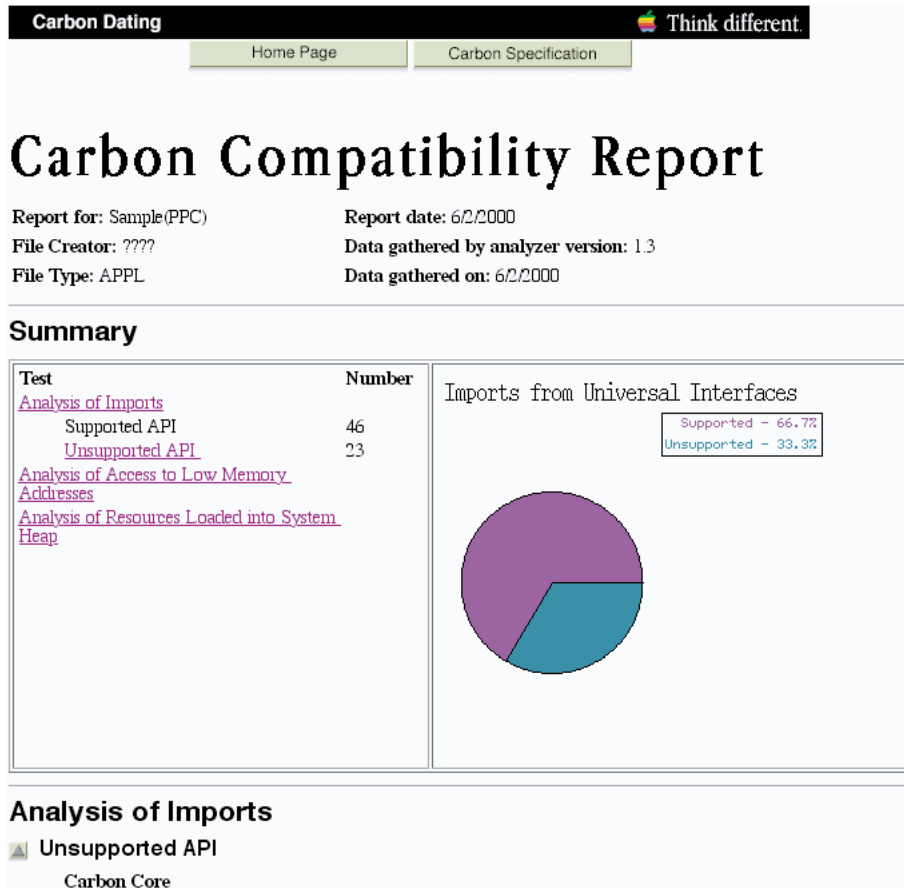
**Figure 4-1** The Sample application

## Obtaining the Carbon Dater Report

---

The first step in the porting process is to obtain a Carbon Dater report detailing what APIs will need to be changed or modified. Figure 4-2 shows the opening page of a Carbon Dater report on Sample.



**Figure 4-2** A Carbon Dater report

Note that while the percentage of unsupported APIs seems high (33.3 %), this fraction corresponds to only 23 functions. Larger applications typically contain many more supported functions, often resulting in compatibility ratings of 90% or higher.

## A Porting Example

Table 4-1 summarizes Carbon Dater's comments about the incompatible functions.

**Table 4-1** Carbon Dater output for incompatible functions

Manager	Function Name	Comments
Memory Management Utilities	SysEnviron	Uses working directories. Use <code>FindFolder</code> and <code>Gestalt</code> instead.
Memory Manager	ApplicationZone	Carbon does not support zones because they do not work in a preemptively multitasked environment.
	GetApplLimit	Mac OS X applications have no size limit on their application partition.
	MaxApplZone	This routine is not needed by PowerPC-based applications because they can specify a stack size in the 'cfrg' 0 resource.
Patch Manager	NGetTrapAddress	Patch Manager not supported in Carbon.
Disk Initialization Manager	DIBadMount	Carbon does not support the Disk Initialization Manager. Disk Initialization is supported by the system. Mac OS X applications that need to initialize disks can do so using new APIs in the I/OKit.
QuickDraw Manager	InitGraf	In Carbon, the Mac OS automatically initializes Quickdraw for every application. When the Mac OS initializes QuickDraw, the Mac OS also automatically calls <code>InitGraf</code> .
Device Manager	CloseDeskAcc	Desk accessories not supported in Carbon.
	OpenDeskAcc	Desk accessories not supported in Carbon.
Dialog Manager	InitDialogs	<code>InitDialogs</code> is not supported in Carbon. There is no need to initialize the Dialog Manager as the shared library is loaded as needed.

**Table 4-1** Carbon Dater output for incompatible functions (continued)

Manager	Function Name	Comments
Event Manager	OSEventAvail	OSEventAvail is not supported in Carbon. Use the EventAvail function instead.
	SystemClick	Desk accessories are not supported in Carbon.
	SystemTask	In Carbon, the Event Manager automatically handles all task scheduling.
Menu Manager	CheckItem	Replaced by CheckMenuItem.
	DisableItem	Replaced by DisableMenuItem.
	EnableItem	Replaced by EnableMenuItem.
	InitMenus	InitMenus is not supported in Carbon. There is no need to initialize the Menu Manager because the shared library is loaded as needed.
Window Manager	SystemEdit	Carbon does not support desk accessories.
	CloseWindow	The CloseWindow function is not supported because developers do not allocate their own memory for windows in Carbon. Use the DisposeWindow function to remove a window instead.
	InitWindows	InitWindows is not supported in Carbon. There is no need to initialize the Window Manager because the shared library is loaded as needed.

**Table 4-1** Carbon Dater output for incompatible functions (continued)

Manager	Function Name	Comments
	InvalRect	Calls <code>InvalWindowRect</code> , which takes a window pointer as an additional parameter. This change is necessary because invalidation works only on windows, not ports, and windows are not ports in Carbon.
Font Manager	InitFonts	There is no need to initialize the Font Manager because the shared library is loaded as needed.
TextEdit	TEInit	There is no need to initialize TextEdit because the shared library is loaded as needed.

The Carbon Dater report indicates that many of the incompatible functions are either no longer needed or obsolete (such as those related to desk accessories), while others require just a replacement. There are only a few cases which might require some thoughtful workarounds.

## The Basic Port

This section describes the initial steps of the porting process. For clarity, the subsection names parallel the porting steps described in Chapter 2, “Preparing Your Code for Carbon.”

## A Porting Example

## Make Sure All of Your Code is PowerPC–Native

---

To qualify for this step, the Sample application should compile as a PowerPC executable, which it does. You can also make the following changes to clean up the code:

- Remove the `#pragma segment` statements. These statements indicate which segments should contain which parts of the code. PowerPC code does not use segments, so these are unnecessary.
- Remove `UnloadSeg` calls in `Main` (2 instances). Again, these calls make sense only on 68K machines.
- Remove the comment on segmentation strategy.
- Remove the `TrapAvailable` function and all references to it. Because `WaitNextEvent` is always available on current systems, `TrapAvailable` is superfluous. Also, it relies on the `NGetTrapAddress` function, which is illegal in Carbon anyway, so you might as well get rid of it now.

## Update to the Current Universal Interfaces and Use the Carbon SDK

---

You must make sure that Sample compiles and runs using the latest version of Universal Interfaces, which should be included with the latest version of the Carbon SDK. The examples here assume you are building your code using Metrowerks CodeWarrior. The following changes are necessary to update to the latest headers:

- Remove `Desk.h` include statement and add `Devices.h` in both `Sample.c` and `SampleInit.c`.
- Change name of `GetGlobalMouse` function in `Sample.c` and `Sample.h` to `MyGetGlobalMouse` (or something similar). The local function collides with the `GetGlobalMouse` function in `Events.h`.
- Remove the reference to `_DataInit` in `main` and its external declaration. This function (part of the MPW runtime library) initializes global data on 68K machines.

## A Porting Example

## Target Mac OS 8 and 9 First

---

This guideline requires you to focus on building a CFM-based Carbon application (at least initially), rather than a Mach-O-based one.

## Begin With CarbonAccessors.o

---

This step is probably the most tedious as it requires you to inspect your code for data structure access that will become illegal in Carbon.

First, add the object file `CarbonAccessors.o` to your CodeWarrior project.

Then add `#define ACCESSOR_CALLS_ARE_FUNCTIONS 1` to the beginning of `Sample.c` and `SampleInit.c`. With this setting in place, the compiler generates errors indicating places where you need to add accessor functions.

If you don't mind seeing additional compile errors initially, you can also add `#define OPAQUE_TOOLBOX_STRUCTS 1`. The compiler will then generate errors if it detects attempts to directly access fields of the now opaque structures. You can use this error list to identify places where you need to modify the code to use accessor functions.

For example, after setting both conditionals, CodeWarrior generates errors such as the following when attempting to compile `Sample.c`:

```
Error   : cannot convert
'struct OpaqueWindowPtr *' to
'struct OpaqueGrafPtr *'
Sample.c line 224   SetPort(window);    /* the window must be the current port... */

Error   : illegal use of incomplete struct/union/class 'struct OpaqueWindowPtr'
Sample.c line 225   EraseRect(&window->portRect); /* because of a bug in ZoomWindow */

Error   : illegal use of incomplete struct/union/class 'struct OpaqueWindowPtr'
Sample.c line 227   InvalRect(&window->portRect); /* to make things look better on-screen
*/
```

## A Porting Example

The code indicated by the errors (contained in the function `DoEvent`) is as follows:

```
...
case inZoomIn:
case inZoomOut:
    hit = TrackBox(window, event->where, part);
    if ( hit ) {
        SetPort(window); /* window must be the current port */
        EraseRect(&window->portRect); /* because of a bug in ZoomWindow */
        ZoomWindow(window, part, true); /* note that we invalidate and erase... */
        InvalRect(&window->portRect); /* to make things look better on-screen */
    }
    break;
```

You must use an accessor to obtain the contents of the `window.portRect` field, and then you must cast the window pointer to a graphics pointer (`GrafPtr`) before setting the port. For more information about available accessor functions and how to use them, see “Functions for Accessing Opaque Data Structures” (page 114).

After the required changes, the code might look something like this:

```
...
case inZoomIn:
case inZoomOut:
    hit = TrackBox(window, event->where, part);
    if ( hit ) {
        Rect portRect; /*.. new variable to hold the value of */
                        /*.. the portRect field of window. */
        GetPortBounds(GetWindowPort(window), &portRect); /*.. new accessor added */
        SetPort(GetWindowPort(window)); /*.. The windowPtr is now cast to */
                        /*.. a GrafPtr before setting */
        EraseRect(&portRect); /* because of a bug in ZoomWindow */
        ZoomWindow(window, part, true); /* note that we invalidate and erase... */
        InvalRect(&portRect); /* to make things look better on-screen */
    }
    break;
```

## A Porting Example

Note that the event record (referenced in a parameter for `TrackBox`) is not opaque. This is one of the few Carbon structures that remains accessible without accessors.

You also need to add accessor functions to the following functions:

- `DoEvent`: add an accessor to obtain the `screenbits` field of the `QDGlobals` structure.
- `AdjustCursor`: add accessors to obtain the port bounds, the visible region, and the arrow field of the `QDGlobals` structure. Instead of attempting to get the `portBits` field of the window port and setting the global origin from that, you can obtain the local port bounds, translate them to global coordinates, and set the origin to the upper left corner of those bounds. Also, you must allocate (and afterwards dispose of) a region handle to hold the visible region obtained by the accessor.
- `DoUpdate`: Add an accessor to obtain the visible region.
- `DrawWindow`: Convert the Window pointer to type `GrafPtr` before setting the port.
- `SetLight`: Add an accessor to obtain the port bounds.
- `DoCloseWindow`: You would normally want to use an accessor to obtain the `windowKind` field, but the function using it is `CloseDeskAcc`, which is not supported in Carbon anyway. So the simplest thing to do is to eliminate the code that handles the desk accessory case altogether.
- `IsAppWindow`: Add an accessor to obtain the window kind.
- `IsDAWindow`: Normally you would use an accessor to obtain the window kind, but because the entire function is useful only for desk accessories, it is simpler to remove it altogether.
- `AlertUser`: Add an accessor to obtain the arrow field of the `QDGlobals` structure.
- `Initialize` (in `SampleInit.c`): Instead of determining the size of a window record in order to allocate space for a new window, you can leave these lines out entirely, because the need to preallocate memory for windows has not been an issue for some time. Note that instead of calling `GetNewWindow`, you could call `CreateNewWindow`, which is the suggested replacement for window creation on Mac OS 8.5 and later.



## A Porting Example

## Use Casting Functions to Convert DialogPtrs and WindowPtrs

---

Use the `GetWindowPort` function to convert window pointers to graphics pointers in the following functions, if you have not already done so: `DoEvent`, `AdjustCursor`, `DrawWindow`, and `SetLight`.

## Modify or Conditionalize Your Headers

---

To allow compilation on both Mac OS X and Mac OS 8 and 9, replace the usual header includes with the following:

```
#define MAC_OS_X_BUILD 0
#if MAC_OS_X_BUILD
    #include <Carbon/Carbon.h>
#else
    #include <Carbon.h>
#endif
```

To build on Mac OS X, you would set the `MAC_OS_X_BUILD` flag to 1(true).

Note that `Carbon.h` is not required; you could have included the usual Mac OS 8 and 9 headers instead. However, by including `Carbon.h`, you set the preprocessor directive

```
#define TARGET_API_MAC_CARBON 1
```

(if it wasn't already defined) which sets the previous directives (`ACCESSOR_CALLS_ARE_FUNCTIONS` and `OPAQUE_TOOLBOX_STRUCTS`) as well.

## Replace Macro Calls to the Mixed Mode Manager With UPP Accessor Functions

---

Sample does not use universal procedure pointers, so this step is unnecessary.

## Remove Direct Access to Low-Memory Globals

---

Sample does not access any low-memory globals, so you can skip this step as well.

## Use DebuggingCarbonLib

---

During development, it's usually useful to keep the debugging version of CarbonLib in your Extensions folder instead of the standard CarbonLib.

## Update Modified or Obsolete Functions

---

Using the information obtained from Carbon Dater, you can now add the required replacements or modifications for Carbon compatibility. First, remove CarbonAccessors.o and InterfaceLib from your link path and begin linking exclusively against CarbonLibStub.

Any attempts to build Sample at this stage will generate linker errors for any functions that are not available in Carbon. You can use the linker errors and the Carbon Dater report as guides for making the following changes:

- In main: Remove MaxApplZone as it's not needed in PowerPC applications.

- In DoEvent:

Remove SystemClick, which is specific to desk accessories.

Replace InvalRect with InvalWindowRect. Note that InvalWindowRect takes an additional window pointer as a parameter.

Remove DIBadMount. This function is hardware-specific. If you want to reproduce its functionality on Mac OS X, you must use the I/O Kit API to do so. Actually, because Carbon does not support the diskEvt event, you can remove this particular case altogether. The Carbon Event Manager will provide support for disk and volume events.

- In SetLight: Replace InvalRect with InvalWindowRect.

- In DoMenuCommand:

Remove SystemEdit because it's specific to desk accessories.

Remove OpenDeskAcc because, again, Carbon doesn't support desk accessories.

- In DoCloseWindow: Replace CloseWindow with DisposeWindow.

- In AdjustMenus:

Replace EnableItem with EnableMenuItem.

Replace CheckItem with CheckMenuItem.

## A Porting Example

Normally you would replace `DisableItem` with `DisableMenuItem`. Here, `DisableItem` is used only in the desk accessory case, which will never occur. Therefore, you can remove all instances of `DisableItem` as well as the conditional to distinguish between the traffic light window and desk accessories.

- In `EventLoop`: Remove the `SystemTask` function as it is not needed in Carbon. Actually, because `WaitNextEvent` is guaranteed to be present, you can remove the conditional altogether.
- In `MyGetGlobalMouse`: Change `OSEventAvail` to `EventAvail`.
- In `Initialize`:

Remove initialization functions `InitGraf`, `InitFonts`, `InitWindows`, `InitMenus`, `TEInit`, and `InitDialogs`, as they are not needed in Carbon.

Remove the `SysEnviroms` function, which is not supported in Carbon. This function is part of a check to see if `WaitNextEvent` is available. Because `WaitNextEvent` is always available in Carbon, you can remove all of the code associated with this check, which eliminates the unsupported functions.

Remove `GetApplLimit` and `ApplicationZone` as they are not supported in Carbon.

In addition, it turns out that the `WaitNextEvent` time `LONG_MAX` (referenced in the `EventLoop` function) is not defined in Carbon. You can replace it with `0x7FFFFFFF` because there are no periodic actions that need to be taken..

After making these changes, your version of `Sample` should be able to run on Mac OS 8 and 9 using the `CarbonLib` extension.

## Adopt Required Carbon Technologies

---

`Sample` does not require interfaces for printing or saving files, so this step is unnecessary.

## Add a 'plst' 0 Resource

---

To ensure that `Sample` will launch as a Carbon application on the Mac OS X and not in the Classic environment, you must add a resource of type `'plst'` with ID 0 to the resource file `TCSample.rsrc`. To add this resource, you can either modify the

## A Porting Example

resource file directly using an editor such as ResEdit or Resourcer, or you can DeRez the file, add text defining the resource, and then recompile the resource file. A minimal 'plst' resource entry would be as follows:

```
data 'plst' (0) {
    $"00"                /* . */
};
```

## Conditionalize Quit Menu Items

---

To make sure that Sample can quit properly in Mac OS X, you must add a Quit Apple event handler to `SampleInit.c` such as the following:

```
/* Here is our Quit Apple event handler */
static pascal OSErr QuitAppleEventHandler (const AppleEvent *appleEvt,
                                           AppleEvent* reply, UInt32 refcon)
{
    Terminate(); /* close window and terminate gracefully */
} /* QuitAppleEventHandler */
```

To install the handler, you must call `AEInstallEventHandler` in the `Initialize` function:

```
...
OSErr err;
err = AEInstallEventHandler( kCoreEventClass, kAEQuitApplication,
                           NewAEEEventHandlerUPP(QuitAppleEventHandler), 0, false );
    if (err != noErr) ExitToShell();
...
```

Note that the Apple event installer function requires one of the new UPP accessor functions, `NewAEEEventHandlerUPP`. This accessor replaces the old macro `NewAEEEventHandlerProc`.

In addition, you must add a case to the `DoEvent` function to process the event properly when it occurs.

```
void DoEvent (EventRecord *event)
{
    ...
    /*.. Add a case to process the Quit Apple event */
```

## A Porting Example

```

        case kHighLevelEvent:
            AEProcessAppleEvent( event );
            break;
...
    }

```

After installing the handler, you must adjust the Quit menu item depending on whether Sample is running on Mac OS X or on Mac OS 8 and 9. Because the Quit item appears automatically in the application menu on Mac OS X, you should add code to the `Initialize` function to remove the Quit item from the File menu (where it normally appears for Mac OS 8 and 9) if Sample is running on Mac OS X:

```

...
    SetMenuBar(menuBar);                                /* install menus */
    DisposeHandle(menuBar);

    /*... New code begins here */
    long result;
    MenuRef menu;

    err = Gestalt(gestaltMenuMgrAttr, &result);
    if (!err && (result & gestaltMenuMgrAquaLayoutMask)) {
        menu = GetMenuHandle (mFile);
        DeleteMenuItem(menu, iQuit);
        DeleteMenuItem(menu, iQuit-1); /* the element above the Quit */
                                         /* item is a separator */
    }

    /*... End of new code */

    DrawMenuBar();
...

```

This snippet uses `Gestalt` to get the Menu Manager attributes and checks to see if the Aqua interface is present. If it is, then Sample running on Mac OS X. It then simply deletes the Quit item and its separator from the menu bar before it gets drawn.

## Cleanup

---

At this point the Sample application should run on both Mac OS X and Mac OS 8 and 9. However, you can remove a few extraneous bits of code to clean up Sample:

- Remove all references to the variable `gMac`, which was only used in the (now nonexistent) `SysEnvi rons` call.
- Remove the `gHasWaitNextEvent` flag. Because `WaitNextEvent` is always available in Carbon, this flag is unnecessary.

If desired, you can now use the same code to build a Mach-O-based version of Sample which can run only on Mac OS X.

## Additional Changes for Aqua

---

While the Carbon version of Sample now executes on Mac OS X, it is also important that the application adheres to the new Aqua interface. Here are a few additional changes you can make to adopt the Aqua look and feel.

### Adjust the Window Size

---

Due to the placement of the three Aqua buttons in each window (the close, minimize, and zoom buttons) and the small default size of Sample's window, the title, Traffic, is truncated. To work around this, you can increase the dimensions of the window and avoid truncation.

### Modify the About Box

---

About boxes in Mac OS X have a consistent appearance that is different from what you may be used to in Mac OS 8 and 9. They should be modeless dialogs that contain the application icon as well as informative text. Figure 4-3 shows an About box created for Sample.

---

**Figure 4-3** The About box for Sample

See *Inside Mac OS X: Aqua Human Interface Guidelines* for the full specifications for the About box.

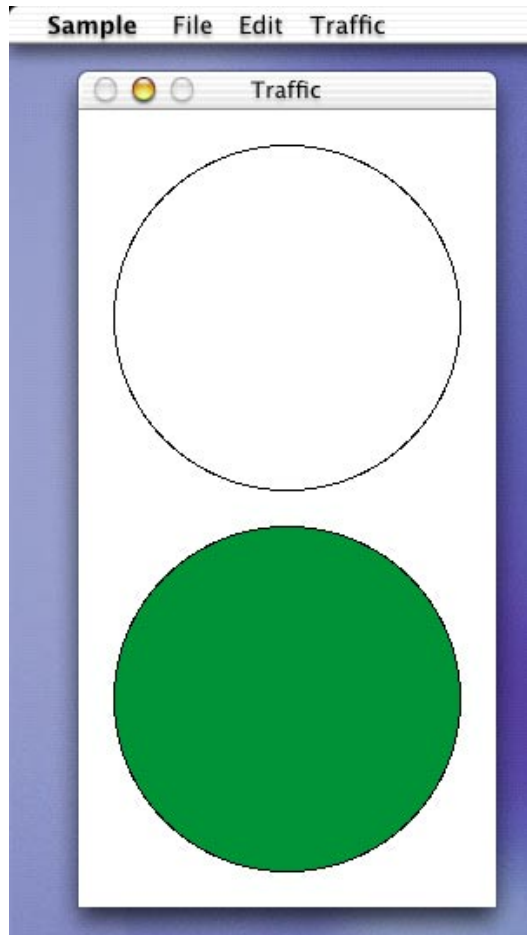
## The Carbon Version of Sample

---

Listing 4-1 and Listing 4-2 show the Sample application now ported to Carbon. Changes related to the porting process are indicated by “••” in comments `/*•• just like this */`. Some discussion comments were removed for clarity.

**Note:** The section “An Example: Adding Carbon Events to Sample” (page 101) describes how to modify Sample to use the Carbon Event Manager.

**Figure 4-4** The Carbon version of Sample on Mac OS X



**Listing 4-1** Carbon version of Sample.c

```
//#define ACCESSOR_CALLS_ARE_FUNCTIONS 1 /*... leftovers from the porting process */
//#define OPAQUE_TOOLBOX_STRUCTS 1

#define TARGET_API_MAC_CARBON 1
```



## C H A P T E R 4

### A Porting Example

```
#define MAC_OS_X_BUILD 0
/*.. use only one include for all Carbon headers */
#if MAC_OS_X_BUILD
    #include <Carbon/Carbon.h>
#else
    #include <Carbon.h>
#endif

#include "Sample.h"      /* bring in all the #defines for Sample */

/* The "g" prefix is used to emphasize that a variable is global. */

/*.. removed gMac and gHasWaitNextEvent global variables, as they are never used */

/* GInBackground is maintained by our osEvent handling routines. Any part of
   the program can check it to find out if it is currently in the background. */
Boolean      gInBackground;      /* maintained by Initialize and DoEvent */

/* The following globals are the state of the window. If we supported more than
   one window, they would be attached to each document, rather than globals. */

/* GStopped tells whether the stop light is currently on stop or go. */
Boolean      gStopped;           /* maintained by Initialize and SetLight */

/* GStopRect and gGoRect are the rectangles of the two stop lights in the window. */
Rect         gStopRect;          /* set up by Initialize */
Rect         gGoRect;           /* set up by Initialize */

/* Define TopLeft and BotRight macros for convenience. Notice the implicit
   dependency on the ordering of fields within a Rect */
#define TopLeft(aRect)  (* (Point *) &(aRect).top)
#define BotRight(aRect) (* (Point *) &(aRect).bottom)

/*.. Removed _DataInit, which is 68K-specific */

void main()
{
```

## C H A P T E R 4

### A Porting Example

```
/*.. Removed UnloadSeg call, which is 68K-specific */

/* 1.01 - call to ForceEnviron removed */
/*.. Removed MaxApplZone as it's not needed in PowerPC apps */

Initialize();          /* initialize the program */
/*.. Removed UnloadSeg call, which is 68K-specific */

EventLoop();           /* call the main event loop */
} /*main*/

void EventLoop()
{
    RgnHandle    cursorRgn;
    Boolean      gotEvent;
    EventRecord   event;
    Point        mouse;

    cursorRgn = NewRgn();    /* we'll pass WNE an empty region the 1st time thru */
    do {
        /*.. WNE is always available in Carbon, so the conditional was removed. */
        MyGetGlobalMouse(&mouse);
        AdjustCursor(mouse, cursorRgn);
        /*.. Note wait period LONG_MAX not defined in Carbon. Replaced with 0x7FFFFFFF */
        gotEvent = WaitNextEvent(everyEvent, &event, 0x7FFFFFFF, cursorRgn);

        if ( gotEvent ) {
            /* make sure we have the right cursor before handling the event */
            AdjustCursor(event.where, cursorRgn);
            DoEvent(&event);
        }
        /* If you are using modeless dialogs that have editText items,
           you will want to call IsDialogEvent to give the caret a chance
           to blink, even if WNE/GNE returned FALSE. However, check FrontWindow
           for a non-NIL value before calling IsDialogEvent. */
    } while ( true );    /* loop forever; we quit via ExitToShell */
} /*EventLoop*/

void DoEvent(EventRecord *event)
```

## CHAPTER 4

### A Porting Example

```
{
    short      part, err;
    WindowPtr  window;
    Boolean    hit;
    char       key;
    Point      aPoint;
    BitMap     screenBits;      /*.. needed to hold contents of qd.screenBits */
    Rect       bounds, portRect; /*.. needed to hold contents of screenbits.bounds and */
                                /*.. the value of the portRect field of the window rec */

    switch ( event->what ) {
        case mouseDown:
            part = FindWindow(event->where, &window);
            switch ( part ) {
                case inMenuBar:      /* process a mouse menu command (if any) */
                    AdjustMenus();
                    DoMenuCommand(MenuSelect(event->where));
                    break;
                case inSysWindow:    /*.. removed SystemClick (not part of Carbon) */
                    break;
                case inContent:
                    if ( window != FrontWindow() ) {
                        SelectWindow(window);
                        /*DoEvent(event);*/ /* use this line for "do first click" */
                    } else
                        DoContentClick(window);
                    break;
                case inDrag:         /* pass screenBits.bounds to get all gDevices */
                    GetQDGlobalsScreenBits(&screenBits); /*.. use accessor to obtain */
                                                         /*.. screenBits */
                    bounds = screenBits.bounds; /*.. get bounds from screenBits */
                                                         /*.. Note that bitmaps are not opaque */
                    DragWindow(window, event->where, &bounds);
                    break;
                case inGrow:
                    break;
                case inZoomIn:
                case inZoomOut:
                    hit = TrackBox(window, event->where, part);
                    if ( hit ) {
                        /*.. new accessor in place */
                    }
                }
            }
        }
    }
```

## A Porting Example

```

        GetPortBounds(GetWindowPort(window), &portRect);

        /*.. The windowPtr is now cast to a GrafPtr before setting */
        SetPort(GetWindowPort(window));

        EraseRect(&portRect);    /* because of a bug in ZoomWindow */
        ZoomWindow(window, part, true); /* note that we invalidate */
                                      /* and erase...to make things look */
                                      /* better on-screen */
        /*.. InvalRect replaced with InvalWindowRect */
        InvalWindowRect(window, &portRect);
    }
    break;
}
break;
case keyDown:
case autoKey:                      /* check for menukey equivalents */
    key = event->message & charCodeMask;
    if ( event->modifiers & cmdKey )          /* Command key down */
        if ( event->what == keyDown ) {
            AdjustMenus();    /* enable/disable/check menu items properly */
            DoMenuCommand(MenuKey(key));
        }
    break;
case activateEvt:
    DoActivate((WindowPtr) event->message,
               (event->modifiers & activeFlag) != 0);
    break;
case updateEvt:
    DoUpdate((WindowPtr) event->message);
    break;
/*.. Add a case to process the Quit Apple event */
case kHighLevelEvent:
    AEProcessAppleEvent( event );
    break;

/*.. Removed diskEvt case (and DIBadMount)--not supported in Carbon

case kOSEvent:
    /* 1.02 - must BitAND with 0x0FF to get only low byte */
    switch ((event->message >> 24) & 0x0FF) {    /* high byte of message */

```

## CHAPTER 4

### A Porting Example

```
        case kSuspendResumeMessage: /* suspend/resume is also an activate */
                                    /* deactivate */
        gInBackground = (event->message & kResumeMask) == 0;
        DoActivate(FrontWindow(), !gInBackground);
        break;
    }
    break;
}
} /*DoEvent*/

void AdjustCursor(Point mouse, RgnHandle region)
{
    WindowPtr    window;
    RgnHandle     arrowRgn;
    RgnHandle     plusRgn;
    RgnHandle     visRgn; /*.. needed to hold field value obtained by accessor function */
    Cursor        arrow; /*.. used to hold the contents of the qd.arrow field */
    Rect          globalPortRect, portRect;

    window = FrontWindow(); /* we only adjust the cursor when we are in front */

    if (! gInBackground) { /*.. removed desk accessory case from conditional */
        /* calculate regions for different cursor shapes */
        arrowRgn = NewRgn();
        plusRgn = NewRgn();

        /* start with a big, big rectangular region */
        SetRectRgn(arrowRgn, kExtremeNeg, kExtremeNeg, kExtremePos, kExtremePos);

        /* calculate plusRgn */
        if ( IsAppWindow(window) ) {

            Point tempPoint;

            SetPort(GetWindowPort(window)); /* make a global version of the viewRect */
            /*.. Added accessor to cast WindowPtr to GrafPtr */
            GetPortBounds (GetWindowPort(window), &portRect);
            SetPt(&tempPoint, portRect.left, portRect.top); /*.. obtain local origin */
            LocalToGlobal(&tempPoint); /*.. translate point to global coordinates */
            SetOrigin(tempPoint.h, tempPoint.v); /*.. Set the global origin */
        }
    }
}
```

## A Porting Example

```

    /*.. Added accessor to get value for globalPortRect */
    GetPortBounds(GetWindowPort(window), &globalPortRect);
    RectRgn(plusRgn, &globalPortRect);

    visRgn = NewRgn(); /*.. allocate a new region */
    /*.. Added accessor to get value for visRgn */
    GetPortVisibleRegion(GetWindowPort(window), visRgn);
    SectRgn(plusRgn, visRgn, plusRgn);
    SetOrigin(0, 0);
    DisposeRgn(visRgn); /*.. dispose of the region */
}

/* subtract other regions from arrowRgn */
DiffRgn(arrowRgn, plusRgn, arrowRgn);

/* change the cursor and the region parameter */
if ( PtInRgn(mouse, plusRgn) ) {
    SetCursor(*GetCursor(plusCursor));
    CopyRgn(plusRgn, region);
} else {
    SetCursor(GetQDGlobalsArrow(&arrow)); /*.. new accessor in place */
    CopyRgn(arrowRgn, region);
}

/* get rid of our local regions */
DisposeRgn(arrowRgn);
DisposeRgn(plusRgn);
}
} /*AdjustCursor*/

/*.. "My" added to GetGlobalMouse to avoid name collision with the function in Events.h */

void MyGetGlobalMouse(Point *mouse)
{
    EventRecord event;

    /*.. Changed OSEventAvail to EventAvail */
    EventAvail(kNoEvents, &event); /* we aren't interested in any events */
    *mouse = event.where;           /* just the mouse position */
}

```

## C H A P T E R 4

### A Porting Example

```
} /*MyGetGlobalMouse*/

void DoUpdate(WindowPtr window)
{
    if (IsAppWindow(window)) {
        RgnHandle visRgn; /*.. needed to hold contents of window->visRgn */

        BeginUpdate(window);          /* this sets up the visRgn */
        visRgn = NewRgn();
        /*.. Added accessor to obtain the visRgn */
        GetPortVisibleRegion (GetWindowPort(window), visRgn);
        if ( ! EmptyRgn(visRgn) )     /* draw if updating needs to be done */
            DrawWindow(window);
        EndUpdate(window);
    }
} /*DoUpdate*/

void DoActivate(WindowPtr window, Boolean becomingActive)
{
    if (IsAppWindow(window)) {

        if ( becomingActive )
            /* do whatever you need to at activation */ ;
        else
            /* do whatever you need to at deactivation */ ;
    }
} /*DoActivate*/

void DoContentClick(WindowPtr window)
{
    SetLight(window, ! gStopped);
} /*DoContentClick*/

void DrawWindow(WindowPtr window)
{
    Rect portRect; /*.. Needed to hold the contents of window->portRect */

```

## CHAPTER 4

### A Porting Example

```
SetPort(GetWindowPort(window));

/*.. Use accessor to obtain port bounds */
GetPortBounds(GetWindowPort(window), &portRect);

EraseRect(&portRect);    /* clear out any garbage that may linger */

if ( gStopped )          /* draw a red (or white) stop light */
    ForeColor(redColor);
else
    ForeColor(whiteColor);

PaintOval(&gStopRect);
ForeColor(blackColor);
FrameOval(&gStopRect);

if ( ! gStopped )        /* draw a green (or white) go light */
    ForeColor(greenColor);
else
    ForeColor(whiteColor);

PaintOval(&gGoRect);
ForeColor(blackColor);
FrameOval(&gGoRect);
} /*DrawWindow*/

void AdjustMenus()
{
    MenuHandle menu;

    /*.. Removed references to IsDAWindow, because desk accessories are not in Carbon*/
    /*.. removed DisableItems and all code dealing with the desk accessory case.*/

    menu = GetMenuHandle(mLight);
    EnableMenuItem(menu, iStop); /*.. replaced EnableItem with EnableMenuItem */
    EnableMenuItem(menu, iGo);

    /*.. replaced CheckItem with CheckMenuItem */
    CheckMenuItem(menu, iStop, gStopped); /* we can also determine check/uncheck */
}
```



## CHAPTER 4

### A Porting Example

```
                                /* state, too */
    CheckMenuItem(menu, iGo, ! gStopped);
} /*AdjustMenus*/

void DoMenuCommand(long menuResult)
{
    short      menuID;           /* the resource ID of the selected menu */
    short      menuItem;        /* the item number of the selected menu */
    short      itemHit;
    Str255     daName;
    short      daRefNum;
    Boolean     handledByDA;

    menuID = HiWord(menuResult); /* use macros for efficiency to... */
    menuItem = LoWord(menuResult); /* get menu item number and menu number */
    switch ( menuID ) {
        case mApple:
            switch ( menuItem ) {
                case iAbout: /* bring up alert for About */
                    itemHit = Alert(rAboutAlert, nil);
                    break;
                default: /* all non-About items in this menu are DAs */
                    /*.. removed desk accessory code (not supported in Carbon) */
                    break;
            }
            break;
        case mFile:
            switch ( menuItem ) {
                case iClose:
                    DoCloseWindow(FrontWindow());
                    break;
                case iQuit:
                    Terminate();
                    break;
            }
            break;
        case mEdit: /* call SystemEdit for DA editing & MultiFinder */
                    /*.. removed because Carbon doesn't support desk accessories */
                    break;
        case mLight:
```

## C H A P T E R 4

### A Porting Example

```
switch ( menuItem ) {
    case iStop:
        SetLight(FrontWindow(), true);
        break;
    case iGo:
        SetLight(FrontWindow(), false);
        break;
}
break;
}
HiliteMenu(0);      /* unhighlight what MenuSelect (or MenuKey) hilited */
} /*DoMenuCommand*/

void SetLight(WindowPtr window, Boolean newStopped)
{
    if ( newStopped != gStopped ) {

        Rect portRect; /*.. Needed to hold port bounds */

        gStopped = newStopped;

        /*.. Use accessor to obtain port bounds */
        GetPortBounds(GetWindowPort(window), &portRect);

        /*.. Use accessor to cast WindowPtr to GrafPtr */
        SetPort(GetWindowPort(window));

        InvalWindowRect(window,&portRect);
    }
} /*SetLight*/

Boolean DoCloseWindow(WindowPtr window)
{
    /*.. Desk accessory-related code removed, because it's not supported in Carbon */

    DisposeWindow(window); /*.. replaced CloseWindow with DisposeWindow */
    return true;
} /*DoCloseWindow*/
```

## CHAPTER 4

### A Porting Example

```
void Terminate()
{
    WindowPtr    aWindow;
    Boolean      closed;

    closed = true;
    do {
        aWindow = FrontWindow();           /* get the current front window */
        if (aWindow != nil)
            closed = DoCloseWindow(aWindow); /* close this window */
    }
    while (closed && (aWindow != nil));
    if (closed)
        ExitToShell();                     /* exit if no cancellation */
} /*Terminate*/

Boolean IsAppWindow(WindowPtr window)
{
    short        windowKind;

    if ( window == nil )
        return false;
    else { /* application windows have windowKinds = userKind (8) */
        windowKind = GetWindowKind(window);
        return ( windowKind == userKind );
    }
} /*IsAppWindow*/

/* Boolean IsDAWindow(WindowPtr window) */
/*.. Carbon does not support desk accessories, so we removed this function */
/* */
/*IsDAWindow*/

void AlertUser()
{
    short        itemHit;
    Cursor       arrow; /*.. used to hold the contents of the qd.arrow field */
}
```

## CHAPTER 4

### A Porting Example

```
SetCursor(GetQDGlobalsArrow(&arrow)); /*.. new accessor in place */
itemHit = Alert(rUserAlert, nil);
ExitToShell();
} /* AlertUser */
```

---

#### **Listing 4-2** Carbon version of SampleInit.c

```
//#define ACCESSOR_CALLS_ARE_FUNCTIONS 1 /*.. leftovers from the porting process */
//#define OPAQUE_TOOLBOX_STRUCTS 1

#define TARGET_API_MAC_CARBON 1

#define MAC_OS_X_BUILD 0
/*.. use only one include for all Carbon headers */
#if MAC_OS_X_BUILD
    #include <Carbon/Carbon.h>
#else
    #include <Carbon.h>
#endif

#include "Sample.h" /* bring in all the #defines for Sample */

/* The "g" prefix is used to emphasize that a variable is global. */
/* All are extern since the variables are declared in the main segment. */

/*.. removed gMac and gHasWaitNextEvent global variables, as they are never used */

/* GInBackground is maintained by our osEvent handling routines. Any part of
the program can check it to find out if it is currently in the background. */
extern Boolean      gInBackground; /* maintained by Initialize and DoEvent */

/* The following globals are the state of the window. If we supported more than
one window, they would be attached to each document, rather than globals. */

/* GStopped tells whether the stop light is currently on stop or go. */
extern Boolean      gStopped; /* maintained by Initialize and SetLight */
```

## C H A P T E R 4

### A Porting Example

```
/* GStopRect and gGoRect are the rectangles of the two stop lights in the window. */
extern Rect      gStopRect;          /* set up by Initialize */
extern Rect      gGoRect;            /* set up by Initialize */

/*.. Here is our Quit Apple event handler */
static pascal OSErr QuitAppleEventHandler( const AppleEvent *appleEvt,
                                           AppleEvent* reply, UInt32 refcon )
{
    Terminate(); /* close window and terminate gracefully */
} /*.. QuitAppleEventHandler */

void Initialize()
{
    Handle      menuBar;
    WindowPtr   window;
    long        total, contig;
    EventRecord  event;
    short        count;
    MenuRef      menu;
    long         result; /*.. used to hold results of Gestalt call */
    OSErr        err;

    gInBackground = false;

    /*.. Removed most of the init functions (InitGraf, etc) as they */
    /*.. are not needed in Carbon */
    InitCursor();

    /* Call MPPOpen and ATPLoad at this point to initialize AppleTalk,
       if you are using it. */

    /* This next bit of code is necessary to allow the default button of our
       alert be outlined.
       1.02 - Changed to call EventAvail so that we don't lose some important
       events. */

    for (count = 1; count <= 3; count++)
        EventAvail(everyEvent, &event);
}
```

## C H A P T E R 4

### A Porting Example

```
/*.. WaitNextEvent is always available in Carbon, so we eliminated the code that */
/*.. calls SysEnviron and checks a trap for its presence. */

/*.. Removed calls to GetApplLimit and ApplicationZone. They are not supported */
/*.. in Carbon, and the memory problem they protect against is no longer an issue */

PurgeSpace(&total, &contig);
if (total < kMinSpace) AlertUser();

/*.. Removed code to preallocate space for our window, because memory */
/*.. requirements are no longer strict enough to make it necessary */

window = GetNewWindow(rWindow, nil, (WindowPtr) -1);

menuBar = GetNewMBar(rMenuBar);          /* read menus into menu bar */
if ( menuBar == nil ) AlertUser();

SetMenuBar(menuBar);                    /* install menus */
DisposeHandle(menuBar);
/*.. Removed code that added desk accessories to the Apple Menu */

/*.. Determine if we're running on Mac OS X, and if we are, remove the Quit menu */
/*.. item and the Quit separator from the File Menu */
err = Gestalt(gestaltMenuMgrAttr, &result);
if (!err && (result & gestaltMenuMgrAquaLayoutMask)) {
    menu = GetMenuHandle (mFile);
    DeleteMenuItem(menu, iQuit);
    DeleteMenuItem(menu, iQuit-1); /*.. the element above the Quit item */
                                   /* .. is a separator */
}

DrawMenuBar();

/*.. Install a Quit Apple Event handler to make sure that the application can */
/*.. quit properly on Mac OS X. It's also just good programming practice on 8/9 */
err = AEInstallEventHandler( kCoreEventClass, kAEQuitApplication,
                           NewAEEEventHandlerUPP(QuitAppleEventHandler), 0, false );
if (err != noErr) ExitToShell();

gStopped = true;
if ( !GoGetRect(rStopRect, &gStopRect) )
```

## C H A P T E R 4

### A Porting Example

```
AlertUser();                                /* the stop light rectangle */
if ( !GoGetRect(rGoRect, &gGoRect) )
    AlertUser();                            /* the go light rectangle */
} /*Initialize*/

Boolean GoGetRect(short rectID, Rect *theRect)
{
    Handle      resource;

    resource = GetResource('RECT', rectID);
    if ( resource != nil ) {
        *theRect = *((Rect**) resource);
        return true;
    }
    else
        return false;
} /* GoGetRect */

/* TrapAvailable */
/*.. Carbon does not support traps, so this function was removed. */

/*TrapAvailable*/
```





# New Carbon Technologies

---

This chapter describes several Mac OS technologies that are new with Carbon. While these technologies are not required in Carbon applications, adopting them can result in improved performance and user experience as well as reduced development cycles.

## Carbon Event Manager

---

The Carbon Event Manager is an event handling API that replaces the Classic Mac OS Event Manager. It simplifies the event model and it is well-suited for the preemptive multitasking capabilities of Mac OS X. For example, when using Carbon events, an application that is performing periodic actions while idle (blinking the cursor, for example) does not have to endlessly cycle through a `WaitNextEvent` loop while doing so. The advantages of the Carbon Event Manager include the following:

- Handlers for common events (such as mouse events and keyboard events) are included. You don't need to write your own event handlers unless you want to override default behaviors.
- Event records can handle any number of event types (as opposed to the Classic event record which can handle only 16 event types).
- The Carbon Event Manager handles notifications (as formerly handled by the Notification Manager) and defproc messaging in addition to the usual events.
- The streamlining of the event handling system results in a more responsive system and a better user experience.

## New Carbon Technologies

When adapting an application to use Carbon events, you typically replace the `WaitNextEvent` loop and event processing functions with one of more simple event handling calls. Your application must register the types of events it wishes to be notified about, and then implement handlers to address the registered events.

The Carbon Event Manager is available for Carbon applications running on Mac OS 8.6 and later, so if you do not need compatibility back to Mac OS 8.1, we highly encourage you to adopt it. While the `WaitNextEvent` event model still works on Mac OS X, your programs and the overall system will perform better if you use Carbon events.

For more information about the Carbon Event Manager, see the documentation available at

<http://developer.apple.com/techpubs/carbon/oss/CarbonEventManager/carbonateventmanager.html>

as well as “An Example: Adding Carbon Events to Sample” (page 101).

## Core Foundation

---

Core Foundation is a new set of APIs that provides a simple interface for handling many common needs for applications. For example, `CFPreference` APIs provide a standard interface for creating and manipulating an application’s user preferences. As most Core Foundation functions are part of the Carbon API, they run on both Mac OS X and Mac OS 8 and 9. In addition, Core Foundation functions are compatible with the Foundation classes available in the Cocoa environment, which simplifies the sharing of data between Carbon and Cocoa applications.

In addition to Preferences Services, other Core Foundation services that you may find useful for your Carbon application include the following:

- Bundle Services, which provides the APIs used to access files and other resources stored in a bundle hierarchy. See “Consider Using Bundles” (page 47) for more information about bundles.

## New Carbon Technologies

- Plug-In Services, which provides a standard plug-in architecture for Mac OS X and Mac OS 8 and 9 applications. You can package plug-in binaries for multiple platforms together, and the Plug-In Services APIs can transparently load the proper one (assuming, of course, that they share the same interface).
- String Services, which provides a simple interface for storing, converting, and manipulating Unicode strings. If your application uses (or is planning to support) Unicode, you should consider adopting String Services.
- The XML Parser, which provides an interface for writing and reading XML documents.
- Property List Services, which provides an interface to organize data into property lists (“plists”). It also allows you to convert hierarchically structured combinations of basic data types in these lists to and from standard XML.

For more information about Core Foundation Services, see *Inside Mac OS X: System Overview* and Core Foundation documentation at the Carbon documentation site:

<http://developer.apple.com/techpubs/carbon/carbon.html>

## DataBrowser

---

DataBrowser is a new Control Manager control (defined in `ControlDefinitions.h`) that lets you display data in sortable, navigatable lists in a manner similar to the list view and column view settings of the Finder. If you need to organize data in manner that is easily accessible to the user, you should consider using the DataBrowser.

Here are some advantages of the various views:

- The list view allows the user to sort by various column attributes related to the data you are displaying. For example, the Finder allows you to display files by type, size, or date modified, among other characteristics.
- The column view is useful for navigating large hierarchies or trees of data. For example both the Mac OS X Finder and the Navigation Services Save dialog box use DataBrowser to let the user quickly find a particular location in a volume’s file hierarchy.

For more information about DataBrowser, see the sample code included with the Carbon SDK.

## Multilingual Text Engine (MLTE)

---

The Multilingual Text Engine (MLTE) is the suggested replacement for TextEdit in Carbon applications. While you can still use TextEdit in Carbon, MLTE provides many additional features and simplifies the programming interface; you can accomplish more with fewer lines of code. Some of MLTE's features include the following:

- Full Unicode support, including transparent access to Apple Type Services for Unicode Imaging (ATSUI) for rendering text, and the Text Encoding Converter (TEC) for converting between encodings.
- Full support for alternate input methods using the Text Services Manager (TSM).
- Support for greater than 32 KB of text.
- Built-in scroll bar handling.
- Full justification of text.
- Built-in support for basic user actions, such as highlighting selected text, dragging selected text, and moving the caret in response to arrow key presses.
- Multiple levels of undo.
- Built-in printing support.

MLTE is available in CarbonLib 1.2 and later. You can also use it in non-Carbon applications on Mac OS 8.6 and later.

For more information about MLTE, see the documentation available at

<http://developer.apple.com/techpubs/carbon/text/MultilingualTextEngine/multilingualtextengine.html>

and the MLTE SDK at

<http://developer.apple.com/sdk/>

## An Example: Adding Carbon Events to Sample

---

The Carbon Event Manager is the most important of the optional technologies available with Carbon; if you plan to add only one new API to your application, it should be Carbon events. In addition to simplifying your event handling code, Carbon events will make your application a good processor-sharing citizen on Mac OS X, which will improve the performance of all running applications.

This section illustrates the adoption of the Carbon Event Manager by adding Carbon events to the Carbon version of the Sample application shown in Listing 4-1 (page 80) and Listing 4-2 (page 92).

“Determine the Appropriate CarbonLib Version” (page 34) indicates that the Carbon Event Manager is available only in CarbonLib 1.2 and later when Mac OS 8.6 or later is present. While this means that you cannot run on Mac OS 8.1, it also means that you are free to incorporate any newer APIs up to Mac OS 8.6 if that makes the work easier.

The basic model for Carbon events is that you register callback handlers for each event (or type of event) you wish to handle. You attach these handlers to specific objects, such as a window or a button. Different objects of the same type do not have to have the same handler. For example, two buttons can each have their own distinct handler. With this level of flexibility in handling events, it is important to determine the scope required for each event. For example, should an event affect a single window, all open windows, or the entire application? In most cases it is easier to think in terms of what object is affected rather than what event occurred.

After any initial setup, your application calls `RunApplicationEventLoop`, which essentially replaces the `WaitNextEvent` loop. From that point on, your application is notified only when an event you specified occurs.

### Standard Event Handlers

---

The Carbon Event Manager provides default event handlers for many common types of events. For example, the standard handler for a window automatically handles dragging, activation, deactivation, window zooming and resizing. Of course, you will mostly likely still need to draw into or update the content region as

## New Carbon Technologies

a result of some actions, but much of the basic work is taken care of for you. A good rule of thumb is to install the standard handler first, see what actions it covers, and then write handlers for any additional actions you may want to take.

## The Basic Conversion

---

In the Carbon version of Sample, most of the event handling occurs in the functions `EventLoop` and `DoEvent`. Here is a breakdown of the events to address:

- Adjusting the cursor shape depending on the region it occupies: Previously the cursor was adjusted each time through the event loop. Because there is no equivalent event loop that we can access in Carbon events, an alternate triggering mechanism is required. One method would be to update the cursor whenever the mouse moves. Another would be to set up a timer to adjust the cursor at regular intervals.
- Menu selections: The Carbon Event Manager can associate special command events with menu items. Many common menu items have command events defined for them in `CarbonEvents.h`, and you can assign your own using the Window Manager function `SetMenuItemCommandID`. When a menu item is selected (either through menu selection or a keyboard equivalent), the Carbon Event Manager sends the appropriate command event to the handler. Some menu selections are related to the window only (such as setting the traffic light color), while others are related to the application (such as the About command). This division suggests a menu command handler at both the window level and the application level.
- Keyboard events: Because the only keyboard input Sample requires are keyboard equivalents for menu items, you can handle these the same as menu selections.
- Mouse clicks in the traffic light window: The light color toggles on each click in the content region of the window. This event is entirely window-related, which suggests a window-level handler.
- Window dragging, zooming, resizing, activation, and deactivation: The standard window event handler addresses these events, so all you need to do is update the content region if necessary.
- Update events: Traditional update events no longer exist, but the Carbon Event Manager does post events indicating that you should change your window contents, so you should redraw the contents at that time.

## New Carbon Technologies

- High level (Apple) events: The only case to worry about is the Quit Apple event, for which we have already installed a handler.
- Disk Events: This case deals with bad floppy disks, and Carbon does not support the `DIBadMount` function or the `diskEvt` event. This example ignores disk events.
- Application suspend and resume events: The standard application event handler covers the basic functionality required for suspend and resume events.

This information indicates that event handlers are needed at both the window-level and the application level.

## Installing the Standard Event Handlers

---

Before adding your application-specific event handlers, you should install the standard handlers for window and application events.

One way to assign the standard window handler to the traffic light window is to call the function `InstallStandardWindowEventHandler` after creating the window in the `Initialize` function.

```
window = GetNewWindow(rWindow, NULL, (WindowPtr)-1);
InstallStandardEventHandler(GetWindowEventTarget(window)); /* installs the default */
                                                         /* handler for window events */
ShowWindow(window);
```

The `GetWindowEventTarget` function returns an event reference (type `EventTargetRef`) to associate with the desired object (in this case, a window). Similar functions exist to create event references for controls, menus, and other objects.

However, because the application must run in Mac OS 8.6 or later, you can call the Window Manager function `CreateNewWindow` instead, which lets you specify an attribute to use the standard window handler. Doing so also provides many of the standard window controls (resize button, and so on) for free.

```
Rect windowBounds;           /* use Rect for bounds in CreateNewWindow */
WindowAttributes windowAttr; /* to hold window attribute flags in CreateNewWindow */
...
windowAttr = kWindowStandardDocumentAttributes| /* standard window */
             kWindowStandardHandlerAttribute| /* standard window event handler */
             kWindowInWindowMenuAttribute;

SetRect (&windowBounds, 40, 60, 280, 520); /* bounds for the new window */
```

## New Carbon Technologies

```
CreateNewWindow(kDocumentWindowClass, windowAttr, &windowBounds, &window);
SetWindowTitleWithCFString(window, CFSTR("Traffic"));

ChangeWindowAttributes(window, NULL, /* remove close box and resize tab */
                       kWindowCloseBoxAttribute|kWindowResizableAttribute);
ShowWindow(window);
```

The `SetWindowTitleWithCFString` function is a Core Foundation String Services function.

To more closely approximate the original Sample, you can call the Window Manager function `ChangeWindowAttributes` to remove the close box and the resize tab.

The standard application event handler is installed automatically when you call `RunApplicationEventLoop`, so you do not need to explicitly install it.

## Registering Your Own Event Handlers

---

After installing the standard handlers, you must register your event handlers with the system. The Carbon Event Manager defines events by the class of event (window, mouse, and so on) as well as the type (mouse moved, content region clicked, and so on). You must specify these when registering your handlers, as in this example:

```
EventTypeSpec    appEventList[] = {{kEventClassCommand, kEventCommandProcess},
                                   { kEventClassMouse, kEventMouseMoved}};

EventTypeSpec    windEventList[] = {{kEventClassWindow, kEventWindowDrawContent },
                                   { kEventClassWindow, kEventWindowClickContentRgn },
                                   { kEventClassWindow, kEventWindowBoundsChanged},
                                   { kEventClassCommand, kEventCommandProcess}};

...

/* Installing the application event handler */
InstallApplicationEventHandler(NewEventHandlerUPP(MyAppEventHandler),
                             2, appEventList, 0, NULL);
```



## New Carbon Technologies

```
/* Installing the window event handler */
InstallWindowEventHandler(window, NewEventHandlerUPP(MyWindowEventHandler),
                        4, windEventList, 0, NULL);
```

The type `EventTypeSpec` arrays hold the pairs of event classes and types which are then passed into the appropriate handler installation calls. The calls `InstallApplicationEventHandler` and `InstallWindowEventHandler` are macros derived from the more general Carbon Event Manager function `InstallEventHandler`. Remember to pass universal procedure pointers instead of normal pointers when specifying your callback handlers. `CarbonEvents.h` defines the format for your callback handlers.

If desired, you can register individual event handlers for each event. However, for this example it is convenient to group them by object.

**Note:** The handlers you install complement the standard event handlers described earlier. For example, the standard window handler will resize a window in response to a resize event. However, if you indicated that you wanted to handle window resize events in your own handler, you could specify additional actions to take (such as refreshing the content window after the resize) while still allowing the standard handler to perform the window resize.

The handlers in this example essentially take the place of the `DoEvent` function, which called other functions to process the events.

## The Application-Level Event Handler

---

Listing 5-1 shows an application-level event handler for the Sample application.

**Listing 5-1**      Application-level event handler for Sample

```
static pascal OSStatus MyAppEventHandler (EventHandlerCallRef myHandlerChain,
                                         EventRef event, void* userData)
{
    UInt32          whatHappened;
    HCommand        commandStruct;
    Point           wheresMyMouse;
    RgnHandle        CursorRgn;
    short           itemHit;
    OSStatus         result = eventNotHandledErr; /* report failure by default */
```

## New Carbon Technologies

```

whatHappened = GetEventKind(event);

switch (whatHappened)
{
    case kEventCommandProcess:

        GetEventParameter (event, kEventParamDirectObject,
                           typeHICommand, NULL, sizeof(HICommand),
                           NULL, &commandStruct);

        switch (commandStruct.commandID)
        {
            case kCommandAbout:
                itemHit = Alert (rAboutAlert, nil);
                result = noErr;
                break;
            default:
                break;
        }
        break;

    case kEventMouseMoved:

        CursorRgn = NewRgn();
        GetEventParameter (event, kEventParamMouseLocation, typeQDPoint,
                           NULL, sizeof(Point), NULL, &wheresMyMouse);
        AdjustCursor(wheresMyMouse, CursorRgn);
        DisposeRgn(CursorRgn);
        result = noErr;
        break;

    default:
        break;
}
return result;
}

```

## New Carbon Technologies

The event handler takes three parameters:

- The `myHandlerChain` parameter is a reference to the handler calling chain; that is, the hierarchy of event handlers that could handle this event. You would pass this reference if you wanted to call `CallNextEventHandler`, for example, which you could use to add pre- or postprocessing to the actions of a standard handler.
- The `event` parameter contains specific information related to the event (much the way the fields of an event record hold event-specific information).
- The `userData` field holds any user data you specified when you registered your handler with the call to `InstallEventHandler` (none in this case).

When an event occurs, `MyAppEventHandler` gets passed the event along with any user data you may have requested (none in this case). It then calls the `GetEventKind` function to determine the type of event that occurred and then handles the event appropriately.

The `kEventCommandProcess` function indicates a menu-related command occurred. By calling the `GetEventParameter` function, the handler determines which item was selected. At the application level only one command is possible: the About selection. Note `kCommandAbout` is not defined in `CarbonEvents.h` so, you need to define it yourself. You can do so and then call the Menu Manager function `SetMenuItemCommandID` in the `Initialize` function to register it with the system.

```
const MenuCommand kCommandAbout = FOUR_CHAR_CODE ('abou');

void Initialize()
{
    ...
    SetMenuItemCommandID (GetMenuRef(mApple), iAbout, kCommandAbout);
    ...
}
```

Note that instead of calling `SetMenuItemCommandID` to assign the command ID, you could choose to define it in an 'xmenu' resource.

You don't need to handle the Quit event because the standard application event handler calls the default Quit Apple event handler when this occurs. If you need to take additional actions before quitting, you can install your own Quit Apple event handler. If you are not using `RunApplicationEventLoop`, (and therefore not using the standard application handler), you can process the Quit event here. Typically you call the function `QuitApplicationEventLoop` to break out of the Carbon event loop.

## New Carbon Technologies

If you are running your application on Mac OS 8 and 9, you need to register the Quit command ID (defined as `kHICommandQuit` in `CarbonEvents.h`) using the `SetMenuItemCommandID` function, much as you had to for the About item. If you don't, the Carbon Event Manager will not properly process the event when the Quit item is selected. A convenient time to do this is when you use `Gestalt` to determine whether to place a Quit item in the File menu.

```
err = Gestalt(gestaltMenuMgrAttr, &result);
if (!err && (result & gestaltMenuMgrAquaLayoutMask)) {
    menu = GetMenuHandle (mFile);
    DeleteMenuItem(menu, iQuit);
    DeleteMenuItem(menu, iQuit-1); /*.. the element above the Quit item */
                                /*.. is a separator */
}
else
{
    /* Assign a command ID to the Quit Item so that the Carbon Event Manager */
    /* can recognize it. */
    SetMenuItemCommandID(GetMenuRef(mFile), iQuit, kHICommandQuit);
}
```

The other application-level event you need to handle is the mouse-moved event, which determines whether or not to adjust the cursor shape. The handler for `Sample` calls `GetEventParameter` to obtain the mouse position (the types of parameters you can obtain depends on the event that occurred) and then calls `AdjustCursor`.

Alternatively, you can adjust the cursor periodically by using a Carbon event timer. Doing so merely involves creating the function to call and then registering it by calling `InstallEventLoopTimer`. However, this method is similar to polling for an event, which is more processor-intensive, and therefore not suggested for Mac OS X.

## The Window Event Handler

---

Listing 5-2 shows a window event handler for `Sample`.

---

### Listing 5-2 Window event handler for `Sample`

```
static pascal OSStatus MyWindowEventHandler(EventHandlerCallRef myHandler,
                                           EventRef event, void* userData)
{
```

## CHAPTER 5

### New Carbon Technologies

```
WindowRef      window;
Rect           bounds;
UInt32         whatHappened;
HCommand       commandStruct;
MenuRef        theMenuRef;
UInt16         theMenuItem;
OSStatus       result = eventNotHandledErr; /* report failure by default */

GetEventParameter(event, kEventParamDirectObject, typeWindowRef, NULL,
                  sizeof(window), NULL, &window);

whatHappened = GetEventKind(event);

switch (whatHappened)
{
    case kEventWindowDrawContent:

        DoUpdate(window);
        result = noErr;
        break;

    case kEventWindowBoundsChanged:

        InvalWindowRect(window, GetWindowPortBounds(window, &bounds));
        DoUpdate(window);
        result = noErr;
        break;

    case kEventWindowClickContentRgn:

        DoContentClick(window);
        DoUpdate(window);
        AdjustMenus();
        result = noErr;
        break;

    case kEventCommandProcess:

        GetEventParameter (event, kEventParamDirectObject,
                           typeHCommand, NULL, sizeof(HCommand),
                           NULL, &commandStruct);
```

## New Carbon Technologies

```

theMenuRef = commandStruct.menu.menuRef;
if (theMenuRef == GetMenuHandle(mLight))
{
    /* Because the event didn't occur *in* the window, the */
    /* window reference isn't valid until we set it here */
    window = FrontWindow();

    theMenuItem = commandStruct.menu.menuItemIndex;
    switch ( theMenuItem )
    {
        case iStop:
            SetLight(window, true);
            break;
        case iGo:
            SetLight(window, false);
            break;
    }
    DoUpdate(window);
    AdjustMenus();
    result = noErr;
}
break;

default:
    /* If nobody handled the event, it gets propagated to the */
    /* application-level handler. */
    break;
}

return result;
}

```

## New Carbon Technologies

As with the application-level handler, the window event handler first calls `GetEventKind` to determine the type of event and then processes them appropriately:

- `kEventWindowDrawContent` indicates that the window contents must be redrawn. This event is similar to an update event in the Classic event model. However, if you have the standard window handler installed, the Carbon Event Manager automatically calls `BeginUpdate` and `EndUpdate` for this event; all you need to do is draw in the window. To avoid nesting update calls, you should remove the duplicate `BeginUpdate` and `EndUpdate` calls in the `DoUpdate` function.
- `kEventWindowBoundsChanged` indicates that the window size has changed (by clicking the zoom button). The handler calls `DoUpdate` to redraw the content region to reflect the new size.
- `kEventWindowClickContentRgn` indicates that the user has clicked in the Traffic window. To toggle the light setting, the handler calls `DoContentClick` as before, but because `Sample` no longer receives update events, the handler also calls `DoUpdate` to draw the new setting. Similarly, because `Sample` cannot update the Traffic menu settings by calling `AdjustMenus` from the `WaitNextEvent` loop, the handler calls it here.
- `kEventCommandProcess` indicates that a menu-related command occurred. Because this is the window handler, the handler processes only cases related to the Traffic window (that is, the Red Light/Green Light items in the Traffic menu). Other commands will end up being handled by the application-level handler. To change the traffic light setting, the handler first isolates the menu item selected from the event parameter and then redraws the light (using the same calls as in the `kEventWindowClickContentRgn` case).

If desired, instead of obtaining the menu item from the `commandStruct` structure, you can define and register constants for these items as you did for the About menu item.

## Cleanup

---

After adapting `Sample` to use Carbon events, you no longer need the following functions:

- `EventLoop`: Replaced by the call to `RunApplicationEventLoop`.
- `DoEvent`: Replaced by the application and window event handlers.

### New Carbon Technologies

- `MyGetGlobalMouse`: The application event handler now retrieves the mouse location from the event structure.
- `DoMenuCommand`: The handling of these events is split between the application and window event handlers.



# New Carbon Functions

---

This section provides an overview of some of the new functions introduced in Carbon. Until complete documentation is available, you should refer to the header files and sample code included on the Mac OS X Developer Tools CD for additional information.

## Custom Definition Procedures

---

Custom defprocs (that is, WDEFs, MDEFs, CDEFs, and LDEFs) must be compiled as PowerPC code and can no longer be stored in resources. Carbon introduces new variants of `CreateWindow` and similar functions (such as `NewControl` and `NewMenu`) that take a universal procedure pointer (UPP) to your custom defproc. Instead of creating a window definition as a WDEF resource, for example, you call the Carbon routine `CreateCustomWindow`:

```
OSStatus CreateCustomWindow(const WindowDefSpec *def,  
                             WindowClass windowClass, WindowAttributes attributes,  
                             const Rect *bounds, WindowPtr *outWindow);
```

The `WindowDefSpec` parameter contains a UPP that points to your custom window definition procedure.

## Changes to WDEFs

---

You need to be aware of the following changes for custom WDEFs:

- Window defprocs no longer receive the `wCalcRgn` message. Instead they receive the `kWindowMsgGetRegion` message twice, once for the structure region and once for the content region. The structure passed in the message parameter indicates the desired region in each case. Your defproc must handle these messages.
- If you need to get the global bounds of a window's `portRect` in order to determine the structure or content regions, you should call `GetWindowBounds` and pass the `kWindowGlobalPortRgn` constant. On return, the function will supply a pointer to a `Rect` indicating the bounds in global coordinates. The pixel map (`PixMap`) bounds on Mac OS X will always start at (0,0), so you will obtain incorrect results if you attempt to manually convert the port's bounds from local to global coordinates by offsetting the bounds by the port's pixel map's bounds.

## Changes to MDEFs

---

You need to be aware of the following changes to custom MDEFs:

- Menu defprocs no longer receive the `mChooseMsg` message. Instead they receive two new messages: `kMenuFindItemMsg` and `kMenuHiliteItemMsg`.
- Code that sets or reads the low memory global variables `TopMenuItem`, `AtMenuBottom`, `MenuDisable`, and `MBSaveLoc` should use the new `MenuTrackingData` structure instead. You can obtain the contents of the structure at any time by calling the new function `GetMenuTrackingData`.
- When a menu defproc receives a `mDrawMsg` message, it also receives a pointer to a `MenuTrackingData` structure in the `whichItem` parameter. Your defproc should read the structure to obtain the menu virtual top and bottom rather than using the low memory accessor functions `LMTopMenuItem` and `LMAAtMenuBottom`.

## Functions for Accessing Opaque Data Structures

---

A major change introduced in Carbon is that some commonly used data structures are now opaque—meaning their internal structure is hidden. Directly referencing fields within these structures is no longer allowed, and will cause a compiler error.

## New Carbon Functions

QuickDraw global variables, graphics ports, regions, window and dialog records, controls, menus, and TSMTE dialogs are all opaque to Carbon applications. Anywhere you reference fields in these structures directly, you must use new casting and accessor functions described in the following sections.

## Casting Functions

---

Many applications assume that window pointer (`WindowPtr`) and dialog pointer (`DialogPtr`) types have a graphics port (`GrafPort`) embedded at the top of their structures. In fact, the standard Universal Interfaces defines dialog pointers and window pointers as graphics pointers so that you don't have to cast them to a type `GrafPtr` before using them. For example:

```
void DrawIntoWindow(WindowPtr window)
{
    SetPort(window);
    MoveTo(x, y);
    LineTo(x + 50, y + 50);
}
```

If you compile the above code using the Carbon interfaces, you'll get a number of compilation errors due to the fact that window pointers are no longer defined as graphics pointers. But you can't simply cast these variables to type `GrafPtr` because doing so will cause your application to crash under Mac OS X.

Instead, Carbon provides a set of casting functions that allow you to obtain a pointer to a window's `GrafPort` structure or vice versa. Using these new functions, code like the previous example must be updated as follows to be Carbon-compliant and compile without errors:

```
void DrawIntoWindow(WindowPtr window)
{
    SetPort(GetWindowPort(window));
    MoveTo(x, y);
    LineTo(x + 50, y + 50);
}
```

Casting functions are provided for obtaining graphics ports from windows, windows from dialogs, and various other combinations. By convention, functions that cast up (that is, going from a lower-level data structure like a graphics port to

## New Carbon Functions

a window or going from a window to a dialog pointer) are named `GetHigherLevelTypeFromLowerLevelType`. Functions that cast down are named `GetHigherLevelTypeLowerLevelType`.

Examples of functions that cast up include:

```
pascal DialogPtr GetDialogFromWindow(WindowPtr window);
pascal WindowPtr GetWindowFromPort(CGrafPtr port);
```

Functions that cast down include:

```
pascal WindowPtr GetDialogWindow(DialogPtr dialog);
pascal CGrafPtr GetWindowPort(WindowPtr window);
```

## Accessor Functions

---

Carbon includes a number of functions to allow applications to access fields within system data structures that are now opaque. Listing A-1 shows an example of some typical coding practices that must be modified for Carbon.

---

### Listing A-1 Example of unsupported data structure access

```
void WalkWindowsAndDoSomething(WindowPtr firstWindow)
{
    WindowPtr currentWindow = firstWindow;

    while (currentWindow != NULL)
    {
        if ((WindowPeek) currentWindow->visible)
            && RectIsFourByFour(&currentWindow->portRect))
        {
            DoSomethingSpecial(currentWindow);
        }
        currentWindow = (WindowPtr) ((WindowPeek)
currentWindow->nextWindow);
    }
}
```

## New Carbon Functions

There are four problems in Listing A-1 that will cause compiler errors when building a Carbon application.

1. Checking the `visible` field directly is not allowed because the `WindowPeek` type is no longer defined (it's only useful when you can assume that type `WindowPtr` can be cast to a `WindowRecord` pointer, which is not the case in Carbon).
2. The `currentWindow` variable is treated as a graphics port. You need to use the casting functions discussed above to access a window's `GrafPort` structure.
3. Graphics ports are now opaque data structures, so you must use an accessor to get the port's bounding rectangle.
4. Accessing the `nextWindow` field directly from the `WindowRecord` structure is not allowed.

To compile and run under Carbon, the code above would have to be changed as shown in Listing A-2.

---

**Listing A-2**      Example of using Carbon-compatible accessor functions

```
void WalkWindowsAndDoSomething(WindowPtr firstWindow)
{
    WindowPtr currentWindow = firstWindow;

    while (currentWindow != NULL)
    {
        Rect windowBounds;

        if (IsWindowVisible(currentWindow) &&
            RectIsFourByFour(GetPortBounds(GetWindowPort(currentWindow),
            &windowBounds))
        {
            DoSomethingSpecial(currentWindow);
        }
        currentWindow = GetNextWindow(currentWindow);
    }
}
```

## New Carbon Functions

One thing to note is that the `GetPortBounds` function returns a pointer to the input rectangle as a syntactic convenience, to allow you to pass the result of `GetPortBounds` directly to another function. Many of the accessor functions return a pointer to the input in the same way, as a convenience to the caller.

With a few exceptions as noted below, all accessor functions return copies to data, not the data itself. You must make sure to allocate storage before you access non-scalar types such as regions and pixel patterns. For example, if you use code like this to test the visible region of a graphics port:

```
if (EmptyRgn(somePort->visRgn))
    DoSomething();
```

you'll have to change it as shown below in order to allow the accessor to copy the port's visible region into your reference:

```
RgnHandle visibleRegion;

visibleRegion = NewRgn();
if (EmptyRgn(GetPortVisibleRegion(somePort, visibleRegion)))
    DoSomething();
DisposeRgn(visibleRegion);
```

A few accessor functions continue to return actual data rather than copied data. `GetPortPixMap`, for example, is provided specifically to allow calls to `CopyBits`, `CopyMask`, and similar functions, and should only be used for these calls. The interface for the `CopyBits`-type calls will be changing to work around this exception, but for now be aware that this exception exists. The QuickDraw bottleneck routines, which are stored in a `GrafProc` record, continue to operate just like their classic Mac OS equivalents. That is, the actual pointer to the structure is returned rather than creating a copy. Other instances where the actual handle is passed back include cases where user-specified data is carried in a data structure, such as the `UserHandle` field in `ListHandle` records.

## New Carbon Functions

Table A-1 lists common accessor functions for Human Interface Toolbox structures.

**Table A-1** Summary of Carbon Human Interface Toolbox accessors

<b>Data structure</b>	<b>Element</b>	<b>Accessor</b>
<b>Controls</b>		
ControlRecord	nextControl	Use Control Manager embedding hierarchy functions. (See Mac OS 8 Control Manager Reference.)
	controlOwner	Get/SetControlOwner. May be replaced in favor of Embed/DetachControl.
	controlRect	Get/SetControlBounds
	controlVis	IsControlVisible, SetControlVisibility
	controlHilite	GetControlHilite, HiliteControl
	controlValue	Get/SetControlValue, Get/SetControl32BitValue
	controlMin	Get/SetControlMinimum, Get/SetControl32BitMinimum
	controlMax	Get/SetControlMaximum, Get/SetControl32BitMaximum
	controlDefProc	<b>not supported</b>
	controlData	Get/SetControlDataHandle
	controlAction	Get/SetControlAction
	controlRfCon	Get/SetControlReference
	controlTitle	Get/SetControlTitle
AuxCtlRec	acNext	<b>not supported</b>
	acOwner	<b>not supported</b>
	acCTable	<b>not supported</b>
	acFlags	<b>not supported</b>
	acReserved	<b>not supported</b>
	acRefCon	Use Get/SetControlProperty if you need more refCons.

## New Carbon Functions

**Table A-1** Summary of Carbon Human Interface Toolbox accessors (continued)

<b>Data structure</b>	<b>Element</b>	<b>Accessor</b>
PopupPrivateData	mHandle	Use Get/SetControlData with proper tags.
	mID	Use Get/SetControlData with proper tags.
<b>Dialog Boxes</b>		
DialogRecord	window	Use GetDialogWindow to obtain the value. There is no equivalent function for setting the value.
	items	AppendDITL, ShortenDITL, AppendDialogItemList, InsertDialogItem, RemoveDialogItems
	textH	GetDialogTextEditHandle
	editField	GetDialogKeyboardFocusItem
	editOpen	Get/SetDialogCancelItem
	aDefItem	Get/SetDialogDefaultItem
<b>Menus</b>		
MenuInfo	menuID	Get/SetMenuID
	menuWidth	Get/SetMenuWidth
	menuHeight	Get/SetMenuHeight
	menuProc	SetMenuDefinition
	enableFlags	Enable/DisableMenuItem, IsMenuItemEnabled
	menuData	Get/SetMenuTitle
<b>Windows</b>		
WindowRecord CWindowRecord	port	Use GetWindowPort to obtain the value. There is no equivalent function for setting the value.
	windowKind	Get/SetWindowKind
	visible	Hide/ShowWindow, ShowHide, IsWindowVisible
	hilited	HiliteWindow, IsWindowHilited
	goAwayFlag	ChangeWindowAttributes
	spareFlag	ChangeWindowAttributes
	strucRgn	GetWindowRegion



## New Carbon Functions

**Table A-1** Summary of Carbon Human Interface Toolbox accessors (continued)

Data structure	Element	Accessor
AuxWinRec	contRgn	GetWindowRegion
	updateRgn	GetWindowRegion
	windowDefProc	<b>not supported</b>
	dataHandle	<b>not supported</b>
	titleHandle	Get/SetWTitle
	titleWidth	GetWindowRegion
	controlList	GetRootControl
	nextWindow	GetNextWindow
	windowPic	Get/SetWindowPic
	refCon	Get/SetWRefCon
	awNext	<b>not supported</b>
	awOwner	<b>not supported</b>
	awCTable	Get/SetWindowContentColor
	reserved	<b>not supported</b>
Lists	awFlags	<b>not supported</b>
	awReserved	<b>not supported</b>
	awRefCon	Use Get/SetWindowProperty if you need more reference constants.
ListRec	rView	Get/SetListViewBounds
	port	Get/SetListPort
	indent	Get/SetListCellIndent
	cellSize	Get/SetListCellSize
	visible	Use GetListVisibileCells to obtain the value. No equivalent function for setting the value.
	vScroll	GetListVerticalScrollBar, use new API (TBD) to turn off automatic scroll bar drawing.

## New Carbon Functions

**Table A-1** Summary of Carbon Human Interface Toolbox accessors (continued)

Data structure	Element	Accessor
	hScroll	GetListHorizontalScrollBar, use new API (TBD) to turn off automatic scroll bar drawing.
	selFlags	Get/SetListSelectionFlags
	lActive	LActivate, GetListActive
	lReserved	not supported
	listFlags	Get/SetListFlags
	clikTime	Get/SetListClickTime
	clikLoc	GetListClickLocation
	mouseLoc	GetListMouseLocation
	lClickLoop	Get/SetListClickLoop
	lastClick	SetListLastClick
	refCon	Get/SetListRefCon
	listDefProc	not supported
	userHandle	Get/SetListUserHandle
	dataBounds	GetListDataBounds
	cells	LGet/SetCell
	maxIndex	LGet/SetCell
	cellArray	LGet/SetCell

## New Carbon Functions

Table A-2 provides a summary of accessor functions you can use to access common QuickDraw data structures.

**Table A-2** QuickDraw accessor functions

<b>Data structure</b>	<b>Element</b>	<b>Accessor</b>
GrafPort	device	not supported
	portBits	Use GetPortBitMapsForCopyBits or IsPortColor.
	portRect	Get/SetPortBounds
	visRgn	Get/SetPortVisibleRegion
	clipRgn	Get/SetPortClipRgn
	bkPat	not supported
	fillPat	not supported
	pnLoc	Get/SetPortPenLocation
	pnSize	Get/SetPortPenSize
	pnMode	Get/SetPortPenMode
	pnPat	not supported
	pnVis	Use GetPortPenVisibility or Show/HidePen.
	txFont	Use GetPortTextFont or TextFont.
	txFace	Use GetPortTextFace or TextFace.
	txMode	Use GetPortTextMode or TextMode.
	txSize	Use GetPortTextSize or TextSize.
	spExtra	Use GetPortSpExtra or SpaceExtra.
	fgColor	not supported
	bkColor	not supported
	colrBit	not supported
	patStretch	not supported
	picSave	IsPortPictureBeingDefined
	rgnSave	not supported
	polySave	not supported
	grafProcs	not supported

## New Carbon Functions

**Table A-2** QuickDraw accessor functions (continued)

<b>Data structure</b>	<b>Element</b>	<b>Accessor</b>
CGrafPort	device	not supported
	portPixMap	GetPortPixMap
	portVersion	IsPortColor
	grafVars	not supported
	chExtra	GetPortChExtra
	pnLocHFrac	Get/SetPortFracHPenLocation
	portRect	Get/SetPortBounds
	visRgn	Get/SetPortVisibleRegion
	clipRgn	Get/SetPortClipRegion
	bkPixPat	Use GetPortBackPixPat or BackPixPat.
	rgbFgColor	Use GetPortForeColor or RGBForeColor.
	rgbBkColor	Use GetPortBackColor or RGBBackColor.
	pnLoc	Get/SetPortPenLocation
	pnSize	Get/SetPortPenSize
	pnMode	Get/SetPortPenMode
	pnPixPat	Get/SetPortPenPixPat
	fillPixPat	Get/SetPortFillPixPat
	pnVis	Use GetPortPenVisibility or Show/HidePen.
	txFont	Use GetPortTextFont or TextFont.
	txFace	Use GetPortTextFace or TextFace.
pnPixPat	txMode	Use GetPortTextMode or TextMode.
	txSize	Use GetPortTextSize or TextSize.
	spExtra	Use GetPortSpExtra or SpaceExtra.
	fgColor	not supported
	bkColor	not supported
	colrBit	not supported
	patStretch	not supported
	picSave	IsPortPictureBeingDefined
	rgnSave	not supported

## New Carbon Functions

**Table A-2** QuickDraw accessor functions (continued)

Data structure	Element	Accessor
QDGlobals	polySave	not supported
	grafProcs	Get/SetPortGrafProcs
	randSeed	GetQDGlobalsRandomSeed
	screenBits	GetQDGlobalsScreenBits
	arrow	GetQDGlobalsArrow
	dkGray	GetQDGlobalsDarkGray
	ltGray	GetQDGlobalsLightGray
	gray	GetQDGlobalsGray
	black	GetQDGlobalsBlack
	white	GetQDGlobalsWhite
GrafPtr	thePort	GetQDGlobalsThePort

## Utility Functions

Carbon includes a number of utility functions to make it easier to port your application. Under the classic Mac OS API, new graphics ports were created by allocating non-relocatable memory the size of a `CGrafPort` record and calling `OpenCPort`. Because `GrafPort` records are now opaque, and their size is system-defined, Carbon includes new routines to create and dispose of graphics ports:

```
pascal CGrafPtr CreateNewPort()
pascal void DisposePort(CGrafPtr port)
```

These functions provide access to commonly used bounding rectangles:

```
pascal OSStatus GetWindowBounds(WindowRef window,
                                WindowRegionCode regionCode, Rect *bounds);
pascal OSStatus GetWindowRegion(WindowRef window,
                                WindowRegionCode regionCode, RgnHandle windowRegion);
```

## New Carbon Functions

Often you'll find the need to set the current port to the one that belongs to a window or dialog box. `SetPortWindowPort` and `SetPortDialogPort` allow you to do this:

```
pascal void SetPortWindowPort(WindowPtr window)
pascal void SetPortDialogPort(DialogPtr dialog)
```

The new function `GetParamText` replaces `LMGetDAStrings` as the method to retrieve the current `ParamText` setting. Pass `NULL` for a parameter if you don't want a particular string.

```
pascal void GetParamText(StringPtr param0, StringPtr param1,
                        StringPtr param2, StringPtr param3)
```

## Functions in CarbonAccessors.o

---

`CarbonAccessors.o` is a static library that contains implementations of the Carbon functions for accessing opaque toolbox data structures. See "Begin With `CarbonAccessors.o`" (page 26) for information on how you can use this library to assist in porting your code to Carbon.

**Note:** You can also use `CarbonAccessors.o` to maintain some backwards compatibility with non-Carbon systems. For example, if you don't require functions that are available only in `CarbonLib`, by linking against the `CarbonAccessors.o` static library you can build an application from a Carbon-compliant code base that runs on non-Carbon systems.

Table A-3 lists the Carbon functions implemented in `CarbonAccessors.o`. The "•" symbol indicates a function added since the Developer Preview 3 version of this document. "••" indicates a function added since Developer Preview 4.

---

**Table A-3** Functions in `CarbonAccessors.o`

<code>AEFlattenDesc</code> ••	<code>AEGetDescData</code>
<code>AEGetDescDataSize</code>	<code>AEReplaceDescData</code> •
<code>AESizeOfFlattenedDesc</code> ••	<code>AEUnflattenDesc</code> ••
<code>c2pstrcpy</code> •	<code>CopyCStringToPascal</code> •

## A P P E N D I X A

### New Carbon Functions

**Table A-3** Functions in CarbonAccessors.o (continued)

CopyPascalStringToC•	CreateNewPort
DisposePort	GetControlBounds
GetControlDataHandle	GetControlHilite
GetControlOwner	GetControlPopupMenuHandle
GetControlPopupMenuID	GetDialogCancelItem
GetDialogDefaultItem	GetDialogFromWindow
GetDialogKeyboardFocusItem	GetDialogPort
GetDialogTextEditHandle	GetDialogWindow
GetGlobalMouse	GetListActive
GetListCellIndent	GetListCellSize
GetListClickLocation	GetListClickLoop
GetListClickTime	GetListDataBounds
GetListDataHandle	GetListDefinition
GetListFlags	GetListHorizontalScrollBar
GetListMouseLocation	GetListPort
GetListRefCon	GetListSelectionFlags
GetListUserHandle	GetListVerticalScrollBar
GetListViewBounds	GetListVisibleCells
GetMenuHeight	GetMenuID
GetMenuTitle	GetMenuWidth
GetNextWindow•	GetParamText
GetPixBounds	GetPixDepth
GetPortBackColor	GetPortBackPixPat
GetPortBackPixPatDirect	GetPortBitMapForCopyBits•
GetPortBounds	GetPortChExtra
GetPortClipRegion	GetPortFillPixPat
GetPortForeColor	GetPortFrachPenLocation
GetPortGrafProcs	GetPortHiliteColor
GetPortOpColor	GetPortPenLocation
GetPortPenMode	GetPortPenPixPat
GetPortPenPixPatDirect	GetPortPenSize

## New Carbon Functions

**Table A-3** Functions in CarbonAccessors.o (continued)

GetPortPenVisibility	GetPortPixMap
GetPortPrintingReference	GetPortSpExtra
GetPortTextFace	GetPortTextFont
GetPortTextMode	GetPortTextSize
GetPortVisibleRegion	GetQDGlobals
GetQDGlobalsArrow	GetQDGlobalsBlack
GetQDGlobalsDarkGray	GetQDGlobalsGray
GetQDGlobalsLightGray	GetQDGlobalsRandomSeed
GetQDGlobalsScreenBits	GetQDGlobalsThePort
GetQDGlobalsWhite	GetRegionBounds
GetTSMDialogDocumentID	GetTSMDialogTSMTERecHandle•
GetWindowFromPort	GetWindowKind
GetWindowList•	GetWindowPort
GetWindowPortBounds	GetWindowSpareFlag
GetWindowStandardState	GetWindowUserState
InvalWindowRect	InvalWindowRgn
IsControlHilited	IsPortColor•
IsPortOffscreen	IsPortPictureBeingDefined
IsPortRegionBeingDefined	IsRegionRectangular
IsTSMDialog•	IsWindowHilited
IsWindowUpdatePending	IsWindowVisible
p2cstrcpy•	SetControlBounds
SetControlDataHandle	SetControlOwner
SetControlPopupMenuHandle	SetControlPopupMenuID
SetListCellIndent	SetListClickLoop
SetListClickTime	SetListFlags
SetListLastClick	SetListPort
SetListRefCon	SetListSelectionFlags
SetListUserHandle	SetListViewBounds
SetMenuHeight	SetMenuID
SetMenuTitle	SetMenuWidth



## New Carbon Functions

**Table A-3** Functions in CarbonAccessors.o (continued)

SetPortBackPixPat	SetPortBackPixPatDirect
SetPortBounds	SetPortClipRegion
SetPortDialogPort	SetPortFrachPenLocation
SetPortGrafProcs	SetPortOpColor
SetPortPenMode	SetPortPenPixPat
SetPortPenPixPatDirect	SetPortPenSize
SetPortPrintingReference	SetPortVisibleRegion
SetPortWindowPort	SetQDError•
SetQDGlobalsArrow	SetQDGlobalsRandomSeed
SetTSMDialogDocumentID	SetTSMTEdDialogTSMTERecHandle•
SetWindowKind	SetWindowStandardState
SetWindowUserState	ValidWindowRect
ValidWindowRgn	

The following functions were removed from CarbonAccessors.o.

**Table A-4** Functions removed from CarbonAccessors.o

DisableMenuItem	EnableMenuItem
GetControlColorTable	GetControlDefinition
GetTSMDialogPtr	GetTSMDialogTextEditHandle
GetWindowGoAwayFlag	SetControlColorTable

## Debugging Functions

---

The following functions have been added to `MacMemory.h` to aid in debugging.

### CheckAllHeaps

---

```
pascal Boolean CheckAllHeaps(void);
```

Checks all applicable heaps for validity. Returns `false` if there is any corruption.

### IsHeapValid

---

```
pascal Boolean IsHeapValid(void);
```

Similar to `CheckAllHeaps`, but checks only the application heap for validity.

### IsHandleValid

---

```
pascal Boolean IsHandleValid(Handle h);
```

Returns `true` if the specified handle is valid. You cannot pass `NULL` or an empty handle to `IsHandleValid`.

### IsPointerValid

---

```
pascal Boolean IsPointerValid(Ptr p);
```

Returns `true` if the specified pointer is valid. You cannot pass `NULL` or an empty pointer to `IsPointerValid`.

## Resource Chain Manipulation Functions

---

Three functions have been added to `Resources.h` to facilitate resource chain manipulation in Carbon applications.

### InsertResourceFile

---

```
OSErr InsertResourceFile(SInt16 refNum, RsrcChainLocation where);
```

If the file is already in the resource chain, it is removed and re-inserted at the location specified by the `where` parameter. If the file has been detached, it is added to the resource chain at the specified location. Returns `resNotFound` if the file is not currently open. Valid constants for the `where` parameter are:

```
// RsrcChainLocation constants for InsertResourceFile
enum short
{
    kRsrcChainBelowAll = 0,          /* Below all other app files in
                                     the resource chain */
    kRsrcChainBelowApplicationMap = 1, /* Below the application's
                                     resource map */
    kRsrcChainAboveApplicationMap = 2 /* Above the application's
                                     resource map */
};
```

### DetachResourceFile

---

```
OSErr DetachResourceFile(SInt16 refNum);
```

If the file is not currently in the resource chain, this function returns `resNotFound`. Otherwise, the resource file is removed from the resource chain.

## FSpResourceFileAlreadyOpen

---

```
Boolean FSpResourceFileAlreadyOpen (  
    const FSSpec *resourceFile,  
    Boolean *inChain,  
    SInt16 *refNum);
```

This function returns `true` if the resource file is already open and known by the Resource Manager (that is, if the file is either in the current resource chain or if it's a detached resource file). If the file is in the resource chain, the `inChain` parameter is set to `true` on exit and the function returns `true`. If the file is open but currently detached, `inChain` is set to `false` and the function returns `true`. If the file is open, the `refNum` to the file is returned.

# The Sample Application

---

The main code for Sample is included in `Sample.c` and `SampleInit.c` as shown in Listing B-1 and Listing B-2. Sample also includes a definition file, `Sample.h`, and a compiled resource file, `TCSample.rsrc`.

The chapter “A Porting Example” (page 63) describes how to port the Sample application to Carbon. “An Example: Adding Carbon Events to Sample” (page 101) describes how to add Carbon events to the Carbon version of Sample.

---

## **Listing B-1**    `Sample.c`

`/*`

File:            `Sample.c`

Contains:    Sample is an example application that demonstrates how to initialize the commonly used toolbox managers, operate successfully under MultiFinder, handle desk accessories, and create, grow, and zoom windows.

It does not by any means demonstrate all the techniques you need for a large application. In particular, Sample does not cover exception handling, multiple windows/documents, sophisticated memory management, printing, or undo. All of these are vital parts of a normal full-sized application.

This application is an example of the form of a Macintosh application; it is NOT a template. It is NOT intended to be used as a foundation for the next world-class, best-selling, 600K application. A stick figure drawing of the human body may

## A P P E N D I X B

### The Sample Application

be a good example of the form for a painting, but that does not mean it should be used as the basis for the next Mona Lisa.

We recommend that you review this program or TESample before beginning a new application.

Written by:

Copyright: Copyright © 1988-1999 by Apple Computer, Inc., All Rights Reserved.

You may incorporate this Apple sample source code into your program(s) without restriction. This Apple sample source code has been provided "AS IS" and the responsibility for its operation is yours. You are not permitted to redistribute this Apple sample source code as "Apple sample source code" after having made changes. If you're going to re-distribute the source, we require that you make it clear in the source that the code was descended from Apple sample source code, but that you've made changes.

Change History (most recent first):

8/13/1999 Karl Groethe Updated for Metrowerks Codewarrior Pro 2.1

\*/

/\* Segmentation strategy:

This program consists of three segments.

1. "Main" contains most of the code, including the MPW libraries, and the main program. This segment is in the file Sample.c
2. "Initialize" contains code that is only used once, during startup, and can be unloaded after the program starts. This segment is in the file SampleInit.c.
3. "%A5Init" is automatically created by the Linker to initialize globals for the MPW libraries and is unloaded right away. \*/

/\* SetPort strategy:

Toolbox routines do not change the current port. In spite of this, in this program we use a strategy of calling SetPort whenever we want to draw or make calls which depend on the current port. This makes us less vulnerable to bugs in other software which might alter the current port (such as the bug (feature?) in many desk accessories which change the port on OpenDeskAcc).

## A P P E N D I X B

### The Sample Application

Hopefully, this also makes the routines from this program more self-contained, since they don't depend on the current port setting. \*/

```
#pragma segment Main

#include <Limits.h>
#include <Types.h>
#include <Resources.h>
#include <QuickDraw.h>
#include <Fonts.h>
#include <Events.h>
#include <Windows.h>
#include <Menus.h>
#include <TextEdit.h>
#include <Dialogs.h>
#include <Desk.h>
#include <ToolUtils.h>
#include <Memory.h>
#include <SegLoad.h>
#include <Files.h>
#include <OSUtils.h>
#include <DiskInit.h>
#include <Packages.h>
#include <Traps.h>
#include "Sample.h          /* bring in all the #defines for Sample */

/* The "g" prefix is used to emphasize that a variable is global. */

/* GMac is used to hold the result of a SysEnvirons call. This makes
   it convenient for any routine to check the environment. */
SysEnvRec    gMac;          /* set up by Initialize */

/* GHasWaitNextEvent is set at startup, and tells whether the WaitNextEvent
   trap is available. If it is false, we know that we must call GetNextEvent. */
Boolean      gHasWaitNextEvent; /* set up by Initialize */

/* GInBackground is maintained by our osEvent handling routines. Any part of
   the program can check it to find out if it is currently in the background. */
Boolean      gInBackground;   /* maintained by Initialize and DoEvent */
```

## A P P E N D I X B

### The Sample Application

```
/* The following globals are the state of the window. If we supported more than
   one window, they would be attached to each document, rather than globals. */

/* GStopped tells whether the stop light is currently on stop or go. */
Boolean      gStopped;          /* maintained by Initialize and SetLight */

/* GStopRect and gGoRect are the rectangles of the two stop lights in the window. */
Rect         gStopRect;         /* set up by Initialize */
Rect         gGoRect;           /* set up by Initialize */

/* Define TopLeft and BotRight macros for convenience. Notice the implicit
   dependency on the ordering of fields within a Rect */
#define TopLeft(aRect)  (* (Point *) &(aRect).top)
#define BotRight(aRect) (* (Point *) &(aRect).bottom)

/* This routine is part of the MPW runtime library. This external
   reference to it is done so that we can unload its segment, %A5Init. */

#ifndef THINK_C
extern void _DataInit();
#endif

void main()
{
#ifndef THINK_C
    UnloadSeg((Ptr) _DataInit);      /* note that _DataInit must not be in Main! */
#endif

    /* 1.01 - call to ForceEnviron removed */

    /* If you have stack requirements that differ from the default,
       then you could use SetApplLimit to increase StackSpace at
       this point, before calling MaxApplZone. */
    MaxApplZone();                   /* expand the heap so code segments load at the top */

    Initialize();                    /* initialize the program */
    UnloadSeg((Ptr) Initialize);     /* note that Initialize must not be in Main! */
}
```



## A P P E N D I X B

### The Sample Application

```
    EventLoop();                                /* call the main event loop */
} /*main*/

/* Get events forever, and handle them by calling DoEvent.
   Get the events by calling WaitNextEvent, if it's available, otherwise
   by calling GetNextEvent. Also call AdjustCursor each time through the loop. */

void EventLoop()
{
    RgnHandle    cursorRgn;
    Boolean      gotEvent;
    EventRecord  event;
    Point        mouse;

    cursorRgn = NewRgn();    /* we'll pass WNE an empty region the 1st time thru */
    do {
        /* use WNE if it is available */
        if ( gHasWaitNextEvent ) {
            GetGlobalMouse(&mouse);
            AdjustCursor(mouse, cursorRgn);
            gotEvent = WaitNextEvent(everyEvent, &event, LONG_MAX, cursorRgn);
        }
        else {
            SystemTask();
            gotEvent = GetNextEvent(everyEvent, &event);
        }
        if ( gotEvent ) {
            /* make sure we have the right cursor before handling the event */
            AdjustCursor(event.where, cursorRgn);
            DoEvent(&event);
        }
        /* If you are using modeless dialogs that have editText items,
           you will want to call IsDialogEvent to give the caret a chance
           to blink, even if WNE/GNE returned FALSE. However, check FrontWindow
           for a non-NIL value before calling IsDialogEvent. */
    } while ( true );    /* loop forever; we quit via ExitToShell */
} /*EventLoop*/

/* Do the right thing for an event. Determine what kind of event it is, and call
   the appropriate routines. */
```

## The Sample Application

```
void DoEvent(EventRecord *event)
{
    short      part, err;
    WindowPtr  window;
    Boolean     hit;
    char        key;
    Point       aPoint;

    switch ( event->what ) {
        case mouseDown:
            part = FindWindow(event->where, &window);
            switch ( part ) {
                case inMenuBar:          /* process a mouse menu command (if any) */
                    AdjustMenus();
                    DoMenuCommand(MenuSelect(event->where));
                    break;
                case inSysWindow:         /* let the system handle the mouseDown */
                    SystemClick(event, window);
                    break;
                case inContent:
                    if ( window != FrontWindow() ) {
                        SelectWindow(window);
                        /*DoEvent(event);*/ /* use this line for "do first click" */
                    } else
                        DoContentClick(window);
                    break;
                case inDrag:              /* pass screenBits.bounds to get all gDevices */
                    DragWindow(window, event->where, &qd.screenBits.bounds);
                    break;
                case inGrow:
                    break;
                case inZoomIn:
                case inZoomOut:
                    hit = TrackBox(window, event->where, part);
                    if ( hit ) {
                        SetPort(window); /* the window must be the current port... */
                        EraseRect(&window->portRect); /* because of a bug in */
                                                    /* ZoomWindow */
                        ZoomWindow(window, part, true); /* note that we invalidate */
                                                    /* and erase... */
                    }
            }
        }
    }
```

## A P P E N D I X B

### The Sample Application

```
        InvalRect(&window->portRect);    /* to make things look */
                                          /* better on-screen */
    }
    break;
}
break;
case keyDown:
case autoKey:                          /* check for menukey equivalents */
    key = event->message & charCodeMask;
    if ( event->modifiers & cmdKey )      /* Command key down */
        if ( event->what == keyDown ) {
            AdjustMenus();               /* enable/disable/check menu items properly */
            DoMenuCommand(MenuKey(key));
        }
    break;
case activateEvt:
    DoActivate((WindowPtr) event->message,
               (event->modifiers & activeFlag) != 0);
    break;
case updateEvt:
    DoUpdate((WindowPtr) event->message);
    break;
/* 1.01 - It is not a bad idea to at least call DIBadMount in response
to a diskEvt, so that the user can format a floppy. */
case diskEvt:
    if ( HiWord(event->message) != noErr ) {
        SetPt(&aPoint, kDILeft, kDITop);
        err = DIBadMount(aPoint, event->message);
    }
    break;
case kOSEvent:
/* 1.02 - must BitAND with 0x0FF to get only low byte */
switch ((event->message >> 24) & 0x0FF) { /* high byte of message */
    case kSuspendResumeMessage: /* suspend/resume is also an */
                                /* activate/deactivate */
        gInBackground = (event->message & kResumeMask) == 0;
        DoActivate(FrontWindow(), !gInBackground);
        break;
}
break;
}
```

## A P P E N D I X B

### The Sample Application

```

} /*DoEvent*/

/* Change the cursor's shape, depending on its position. This also calculates the region
   where the current cursor resides (for WaitNextEvent). If the mouse is ever outside of
   that region, an event would be generated, causing this routine to be called,
   allowing us to change the region to the region the mouse is currently in. If
   there is more to the event than just "the mouse moved", we get called before the
   event is processed to make sure the cursor is the right one. In any (ahem) event,
   this is called again before we fall back into WNE. */

void AdjustCursor(Point mouse, RgnHandle region)
{
    WindowPtr    window;
    RgnHandle     arrowRgn;
    RgnHandle     plusRgn;
    Rect          globalPortRect;

    window = FrontWindow(); /* we only adjust the cursor when we are in front */
    if ( (! gInBackground) && (! IsDAWindow(window)) ) {
        /* calculate regions for different cursor shapes */
        arrowRgn = NewRgn();
        plusRgn = NewRgn();

        /* start with a big, big rectangular region */
        SetRectRgn(arrowRgn, kExtremeNeg, kExtremeNeg, kExtremePos, kExtremePos);

        /* calculate plusRgn */
        if ( IsAppWindow(window) ) {
            SetPort(window); /* make a global version of the viewRect */
            SetOrigin(-window->portBits.bounds.left, -window->portBits.bounds.top);
            globalPortRect = window->portRect;
            RectRgn(plusRgn, &globalPortRect);
            SectRgn(plusRgn, window->visRgn, plusRgn);
            SetOrigin(0, 0);
        }

        /* subtract other regions from arrowRgn */
        DiffRgn(arrowRgn, plusRgn, arrowRgn);

        /* change the cursor and the region parameter */
    }
}
```

## A P P E N D I X B

### The Sample Application

```
if ( PtInRgn(mouse, plusRgn) ) {
    SetCursor(*GetCursor(plusCursor));
    CopyRgn(plusRgn, region);
} else {
    SetCursor(&qd.arrow);
    CopyRgn(arrowRgn, region);
}

/* get rid of our local regions */
DisposeRgn(arrowRgn);
DisposeRgn(plusRgn);
}
} /*AdjustCursor*/

/* Get the global coordinates of the mouse. When you call OSEventAvail
it will return either a pending event or a null event. In either case,
the where field of the event record will contain the current position
of the mouse in global coordinates and the modifiers field will reflect
the current state of the modifiers. Another way to get the global
coordinates is to call GetMouse and LocalToGlobal, but that requires
being sure that thePort is set to a valid port. */

void GetGlobalMouse(Point *mouse)
{
    EventRecord event;

    OSEventAvail(kNoEvents, &event);    /* we aren't interested in any events */
    *mouse = event.where;                /* just the mouse position */
} /*GetGlobalMouse*/

/* This is called when an update event is received for a window.
It calls DrawWindow to draw the contents of an application window.
As an efficiency measure that does not have to be followed, it
calls the drawing routine only if the visRgn is non-empty. This
will handle situations where calculations for drawing or drawing
itself is very time-consuming. */

void DoUpdate(WindowPtr window)
{
```

## A P P E N D I X B

### The Sample Application

```
    if ( IsAppWindow(window) ) {
        BeginUpdate(window);                /* this sets up the visRgn */
        if ( ! EmptyRgn(window->visRgn) )    /* draw if updating needs to be done */
            DrawWindow(window);
        EndUpdate(window);
    }
} /*DoUpdate*/

/* This is called when a window is activated or deactivated.
   In Sample, the Window Manager's handling of activate and
   deactivate events is sufficient. Other applications may have
   TextEdit records, controls, lists, etc., to activate/deactivate. */

void DoActivate(WindowPtr window, Boolean becomingActive)
{
    if ( IsAppWindow(window) ) {
        if ( becomingActive )
            /* do whatever you need to at activation */ ;
        else
            /* do whatever you need to at deactivation */ ;
    }
} /*DoActivate*/

/* This is called when a mouse-down event occurs in the content of a window.
   Other applications might want to call FindControl, TEClick, etc., to
   further process the click. */

void DoContentClick(WindowPtr window)
{
    SetLight(window, ! gStopped);
} /*DoContentClick*/

/* Draw the contents of the application window. We do some drawing in color, using
   Classic QuickDraw's color capabilities. This will be black and white on old
   machines, but color on color machines. At this point, the window's visRgn
   is set to allow drawing only where it needs to be done. */

void DrawWindow(WindowPtr window)
```

## A P P E N D I X B

### The Sample Application

```
{
    SetPort(window);

    EraseRect(&window->portRect);    /* clear out any garbage that may linger */
    if ( gStopped )                  /* draw a red (or white) stop light */
        ForeColor(redColor);
    else
        ForeColor(whiteColor);

    PaintOval(&gStopRect);
    ForeColor(blackColor);
    FrameOval(&gStopRect);

    if ( ! gStopped )                /* draw a green (or white) go light */
        ForeColor(greenColor);
    else
        ForeColor(whiteColor);

    PaintOval(&gGoRect);
    ForeColor(blackColor);
    FrameOval(&gGoRect);
} /*DrawWindow*/

/* Enable and disable menus based on the current state.
   The user can only select enabled menu items. We set up all the menu items
   before calling MenuSelect or MenuKey, since these are the only times that
   a menu item can be selected. Note that MenuSelect is also the only time
   the user will see menu items. This approach to deciding what enable/
   disable state a menu item has the advantage of concentrating all
   the decision-making in one routine, as opposed to being spread throughout
   the application. Other application designs may take a different approach
   that is just as valid. */

void AdjustMenus()
{
    WindowPtr    window;
    MenuHandle    menu;

    window = FrontWindow();
```

## A P P E N D I X B

### The Sample Application

```
menu = GetMenuHandle(mFile);
if ( IsDAWindow(window) )      /* we can allow desk accessories to be */
                                /* closed from the menu */
    EnableItem(menu, iClose);
else
    DisableItem(menu, iClose);  /* but not our traffic light window */

menu = GetMenuHandle(mEdit);
if ( IsDAWindow(window) ) {    /* a desk accessory might need the edit menu... */
    EnableItem(menu, iUndo);
    EnableItem(menu, iCut);
    EnableItem(menu, iCopy);
    EnableItem(menu, iClear);
    EnableItem(menu, iPaste);
} else {                       /* ...but we don't use it */
    DisableItem(menu, iUndo);
    DisableItem(menu, iCut);
    DisableItem(menu, iCopy);
    DisableItem(menu, iClear);
    DisableItem(menu, iPaste);
}

menu = GetMenuHandle(mLight);
if ( IsAppWindow(window) ) {   /* we know that it must be the traffic light */
    EnableItem(menu, iStop);
    EnableItem(menu, iGo);
} else {
    DisableItem(menu, iStop);
    DisableItem(menu, iGo);
}
CheckItem(menu, iStop, gStopped); /* we can also determine the check/uncheck */
                                  /* state,too */
CheckItem(menu, iGo, ! gStopped);
} /*AdjustMenus*/

/* This is called when an item is chosen from the menu bar (after calling
MenuSelect or MenuKey). It performs the right operation for each command.
It is good to have both the result of MenuSelect and MenuKey go to
one routine like this to keep everything organized. */
```



## A P P E N D I X B

### The Sample Application

```
void DoMenuCommand(long menuResult)
{
    short      menuID;           /* the resource ID of the selected menu */
    short      menuItem;        /* the item number of the selected menu */
    short      itemHit;
    Str255     daName;
    short      daRefNum;
    Boolean     handledByDA;

    menuID = HiWord(menuResult); /* use macros for efficiency to... */
    menuItem = LoWord(menuResult); /* get menu item number and menu number */
    switch ( menuID ) {
        case mApple:
            switch ( menuItem ) {
                case iAbout: /* bring up alert for About */
                    itemHit = Alert(rAboutAlert, nil);
                    break;
                default: /* all non-About items in this menu are DAs */
                    /* type Str255 is an array in MPW 3 */
                    GetMenuItemText(GetMenuHandle(mApple), menuItem, daName);
                    daRefNum = OpenDeskAcc(daName);
                    break;
            }
            break;
        case mFile:
            switch ( menuItem ) {
                case iClose:
                    DoCloseWindow(FrontWindow());
                    break;
                case iQuit:
                    Terminate();
                    break;
            }
            break;
        case mEdit: /* call SystemEdit for DA editing & MultiFinder */
            handledByDA = SystemEdit(menuItem-1); /* since we don't do any Editing */
            break;
        case mLight:
            switch ( menuItem ) {
                case iStop:
                    SetLight(FrontWindow(), true);
            }
    }
```

## A P P E N D I X B

### The Sample Application

```
        break;
    case iGo:
        SetLight(FrontWindow(), false);
        break;
    }
    break;
}
HiliteMenu(0);          /* unhighlight what MenuSelect (or MenuKey) hilited */
} /*DoMenuCommand*/

/* Change the setting of the light. */

void SetLight(WindowPtr window, Boolean newStopped)
{
    if ( newStopped != gStopped ) {
        gStopped = newStopped;
        SetPort(window);
        InvalRect(&window->portRect);
    }
} /*SetLight*/

/* Close a window. This handles desk accessory and application windows. */

/* 1.01 - At this point, if there was a document associated with a
window, you could do any document saving processing if it is 'dirty'.
DoCloseWindow would return true if the window actually closed, i.e.,
the user didn't cancel from a save dialog. This result is handy when
the user quits an application, but then cancels the save of a document
associated with a window. */

Boolean DoCloseWindow(WindowPtr window)
{
    if ( IsDAWindow(window) )
        CloseDeskAcc(((WindowPeek) window)->windowKind);
    else if ( IsAppWindow(window) )
        CloseWindow(window);
    return true;
} /*DoCloseWindow*/
```

## A P P E N D I X B

### The Sample Application

```
/******  
*** 1.01 DoCloseBehind(window) was removed ***
```

1.01 - DoCloseBehind was a good idea for closing windows when quitting and not having to worry about updating the windows, but it suffered from a fatal flaw. If a desk accessory owned two windows, it would close both those windows when CloseDeskAcc was called. When DoCloseBehind got around to calling DoCloseWindow for that other window that was already closed, things would go very poorly. Another option would be to have a procedure, GetRearWindow, that would go through the window list and return the last window. Instead, we decided to present the standard approach of getting and closing FrontWindow until FrontWindow returns NIL. This has a potential benefit in that the window whose document needs to be saved may be visible since it is the front window, therefore decreasing the chance of user confusion. For aesthetic reasons, the windows in the application should be checked for updates periodically and have the updates serviced.

```
*****/
```

```
/* Clean up the application and exit. We close all of the windows so that  
they can update their documents, if any. */
```

```
/* 1.01 - If we find out that a cancel has occurred, we won't exit to the */  
/* shell, but will return instead. */
```

```
void Terminate()  
{  
    WindowPtr    aWindow;  
    Boolean      closed;  
  
    closed = true;  
    do {  
        aWindow = FrontWindow();           /* get the current front window */  
        if (aWindow != nil)  
            closed = DoCloseWindow(aWindow); /* close this window */  
    }  
    while (closed && (aWindow != nil));  
    if (closed)  
        ExitToShell();                     /* exit if no cancellation */
```

## A P P E N D I X B

### The Sample Application

```
} /*Terminate*/
```

```
/* Check to see if a window belongs to the application. If the window pointer
   passed was NIL, then it could not be an application window. WindowKinds
   that are negative belong to the system and windowKinds less than userKind
   are reserved by Apple except for windowKinds equal to dialogKind, which
   mean it is a dialog.
```

1.02 - In order to reduce the chance of accidentally treating some window as an AppWindow that shouldn't be, we'll only return true if the windowkind is userKind. If you add different kinds of windows to Sample you'll need to change how this all works. \*/

```
Boolean IsAppWindow(WindowPtr window)
```

```
{
    short      windowKind;

    if ( window == nil )
        return false;
    else { /* application windows have windowKinds = userKind (8) */
        windowKind = ((WindowPeek) window)->windowKind;
        return ( windowKind == userKind );
    }
} /*IsAppWindow*/
```

```
/* Check to see if a window belongs to a desk accessory. */
```

```
Boolean IsDAWindow(WindowPtr window)
```

```
{
    if ( window == nil )
        return false;
    else /* DA windows have negative windowKinds */
        return ( ((WindowPeek) window)->windowKind < 0 );
} /*IsDAWindow*/
```

```
/* Display an alert that tells the user an error occurred, then exit the program.
   This routine is used as an ultimate bail-out for serious errors that prohibit
   the continuation of the application. Errors that do not require the termination
   of the application should be handled in a different manner. Error checking and
```

## A P P E N D I X B

### The Sample Application

reporting has a place even in the simplest application. The error number is used to index an 'STR#' resource so that a relevant message can be displayed. \*/

```
void AlertUser()
{
    short          itemHit;

    SetCursor(&qd.arrow);
    itemHit = Alert(rUserAlert, nil);
    ExitToShell();
} /* AlertUser */
```

---

#### **Listing B-2**    SampleInit.c

```
/* File:                SampleInit.c */

/* Repeated comments from Sample.c removed */

#pragma segment Initialize

#include <Limits.h>
#include <Types.h>
#include <Resources.h>
#include <QuickDraw.h>
#include <Fonts.h>
#include <Events.h>
#include <Windows.h>
#include <Menus.h>
#include <TextEdit.h>
#include <Dialogs.h>
#include <Desk.h>
#include <ToolUtils.h>
#include <Memory.h>
#include <SegLoad.h>
#include <Files.h>
#include <OSUtils.h>
#include <DiskInit.h>
#include <Packages.h>
#include <Traps.h>
```

## A P P E N D I X B

### The Sample Application

```
#include <OSUtils.h>
#include "Sample.h"      /* bring in all the #defines for Sample */

/* The "g" prefix is used to emphasize that a variable is global. */
/* All are extern since the variables are declared in the main segment. */

/* GMac is used to hold the result of a SysEnvirons call. This makes
   it convenient for any routine to check the environment. */
extern SysEnvRec      gMac;          /* set up by Initialize */

/* GHasWaitNextEvent is set at startup, and tells whether the WaitNextEvent
   trap is available. If it is false, we know that we must call GetNextEvent. */
extern Boolean        gHasWaitNextEvent; /* set up by Initialize */

/* GInBackground is maintained by our osEvent handling routines. Any part of
   the program can check it to find out if it is currently in the background. */
extern Boolean        gInBackground;    /* maintained by Initialize and DoEvent */

/* The following globals are the state of the window. If we supported more than
   one window, they would be attached to each document, rather than globals. */

/* GStopped tells whether the stop light is currently on stop or go. */
extern Boolean        gStopped;         /* maintained by Initialize and SetLight */

/* GStopRect and gGoRect are the rectangles of the two stop lights in the window. */
extern Rect          gStopRect;         /* set up by Initialize */
extern Rect          gGoRect;          /* set up by Initialize */

/* Set up the whole world, including global variables, Toolbox managers,
   and menus. We also create our one application window at this time.
   Since window storage is non-relocateable, how and when to allocate space
   for windows is very important so that heap fragmentation does not occur.
   Because Sample has only one window and it is only disposed when the application
   quits, we will allocate its space here, before anything that might be a locked
   relocatable object gets into the heap. This way, we can force the storage to be
   in the lowest memory available in the heap. Window storage can differ widely
   amongst applications depending on how many windows are created and disposed. */
```

## A P P E N D I X B

### The Sample Application

```
/* 1.01 - The code that used to be part of ForceEnviorns has been moved into
this module. If an error is detected, instead of merely doing an ExitToShell,
which leaves the user without much to go on, we call AlertUser, which puts
up a simple alert that just says an error occurred and then calls ExitToShell.
Since there is no other cleanup needed at this point if an error is detected,
this form of error- handling is acceptable. If more sophisticated error recovery
is needed, an exception mechanism, such as is provided by Signals, can be used. */

void Initialize()
{
    Handle      menuBar;
    WindowPtr   window;
    long        total, contig;
    EventRecord event;
    short       count;

    gInBackground = false;

    InitGraf((Ptr) &qd.thePort);
    InitFonts();
    InitWindows();
    InitMenus();
    TEInit();
    InitDialogs(nil);
    InitCursor();

    /* Call MPPOpen and ATPLoad at this point to initialize AppleTalk,
       if you are using it. */
    /* NOTE -- It is no longer necessary, and actually unhealthy, to check
       PortBUse and SPConfig before opening AppleTalk. The drivers are capable
       of checking for port availability themselves. */

    /* This next bit of code is necessary to allow the default button of our
       alert be outlined.
       1.02 - Changed to call EventAvail so that we don't lose some important
       events. */

    for (count = 1; count <= 3; count++)
        EventAvail(everyEvent, &event);

    /* Ignore the error returned from SysEnviorns; even if an error occurred,
```

## A P P E N D I X B

### The Sample Application

the SysEnviron glue will fill in the SysEnvRec. You can save a redundant call to SysEnviron by calling it after initializing AppleTalk. \*/

```
SysEnviron(kSysEnvironVersion, &gMac);

/* Make sure that the machine has at least 128K ROMs. If it doesn't, exit. */

if (gMac.machineType < 0) AlertUser();

/* 1.02 - Move TrapAvailable call to after SysEnviron so that we can tell
   in TrapAvailable if a tool trap value is out of range. */

gHasWaitNextEvent = TrapAvailable(_WaitNextEvent, ToolTrap);

/* 1.01 - We used to make a check for memory at this point by examining ApplLimit,
   ApplicationZone, and StackSpace and comparing that to the minimum size we told
   MultiFinder we needed. This did not work well because it assumed too much about
   the relationship between what we asked MultiFinder for and what we would actually
   get back, as well as how to measure it. Instead, we will use an alternate
   method comprised of two steps. */

/* It is better to first check the size of the application heap against a value
   that you have determined is the smallest heap the application can reasonably
   work in. This number should be derived by examining the size of the heap that
   is actually provided by MultiFinder when the minimum size requested is used.
   The derivation of the minimum size requested from MultiFinder is described
   in Sample.h. The check should be made because the preferred size can end up
   being set smaller than the minimum size by the user. This extra check acts to
   insure that your application is starting from a solid memory foundation. */

if ((long) GetApplLimit() - (long) ApplicationZone() < kMinHeap) AlertUser();

/* Next, make sure that enough memory is free for your application to run. It
   is possible for a situation to arise where the heap may have been of required
   size, but a large scrap was loaded which left too little memory. To check for
   this, call PurgeSpace and compare the result with a value that you have
   determined is the minimum amount of free memory your application needs at
   initialization. This number can be derived several different ways. One way that
   is fairly straightforward is to run the application in the minimum size
   configuration as described previously. Call PurgeSpace at initialization and
   examine the value returned. However, you should make sure that this result is not
```



## A P P E N D I X B

### The Sample Application

being modified by the scrap's presence. You can do that by calling ZeroScrap before calling PurgeSpace. Remove this call before shipping, though. \*/

```
/* ZeroScrap(); */

PurgeSpace(&total, &contig);
if (total < kMinSpace) AlertUser();

/* The extra benefit to waiting until after the Toolbox Managers have been
   initialized to check memory is that we can now give the user an alert to tell
   him/her what happened. Although it is possible that the memory situation could
   be worsened by displaying an alert, MultiFinder would gracefully exit the
   application with an informative alert if memory became critical. Here we are
   acting more in a preventative manner to avoid future disaster from low-memory
   problems. */

/* We will allocate our own window storage instead of letting the Window
   Manager do it because GetNewWindow may load in temp. resources before
   making the NewPtr call, and this can lead to heap fragmentation. */

window = (WindowPtr) NewPtr(sizeof(WindowRecord));
if ( window == nil ) AlertUser();
window = GetNewWindow(rWindow, (Ptr) window, (WindowPtr) -1);

menuBar = GetNewMBar(rMenuBar);          /* read menus into menu bar */
if ( menuBar == nil ) AlertUser();
SetMenuBar(menuBar);                     /* install menus */
DisposeHandle(menuBar);
AppendResMenu(GetMenuHandle(mApple), 'DRVr'); /* add DA names to Apple menu */
DrawMenuBar();

gStopped = true;
if ( !GoGetRect(rStopRect, &gStopRect) )
    AlertUser();                        /* the stop light rectangle */
if ( !GoGetRect(rGoRect, &gGoRect) )
    AlertUser();                        /* the go light rectangle */
} /*Initialize*/

/* This utility loads the global rectangles that are used by the window
   drawing routines. It shows how the resource manager can be used to hold
```

## A P P E N D I X B

### The Sample Application

values in a convenient manner. These values are then easily altered without having to re-compile the source code. In this particular case, we know that this routine is being called at initialization time. Therefore, if a failure occurs here, we will assume that the application is in such bad shape that we should just exit. Your error handling may differ, but the check should still be made. \*/

```
Boolean GoGetRect(short rectID, Rect *theRect)
{
    Handle      resource;

    resource = GetResource('RECT', rectID);
    if ( resource != nil ) {
        *theRect = *((Rect**) resource);
        return true;
    }
    else
        return false;
} /* GoGetRect */

/* Check to see if a given trap is implemented. This is only used by the
   Initialize routine in this program, so we put it in the Initialize segment.
   The recommended approach to see if a trap is implemented is to see if
   the address of the trap routine is the same as the address of the
   Unimplemented trap. */
/* 1.02 - Needs to be called after call to SysEnviron so that it can check
   if a ToolTrap is out of range of a pre-MacII ROM. */

Boolean TrapAvailable(short tNumber, TrapType tType)
{
    if ( ( tType == ToolTrap ) &&
        ( gMac.machineType > envMachUnknown ) &&
        ( gMac.machineType < envMacII ) ) {          /* it's a 512KE, Plus, or SE */
        tNumber = tNumber & 0x03FF;
        if ( tNumber > 0x01FF )                      /* which means the tool traps */
            tNumber = _Unimplemented;                /* only go to 0x01FF */
    }
    return NGetTrapAddress(tNumber, tType) !=
        NGetTrapAddress(_Unimplemented, ToolTrap);
} /*TrapAvailable*/
```

# Document Version History

---

This appendix lists changes to the Carbon Porting Guide:

**Table C-1** Carbon Porting Guide revision history

Version	Notes
Public release 12/4/00	<p>The Aqua guidelines document, <i>Adopting the Aqua Interface</i>, is now called <i>Inside Mac OS X: Aqua Human Interface Guidelines</i>.</p> <p>Changed “Add a 'carb' 0 Resource” to “Add a 'plst' 0 Resource” (page 32). The 'plst' 0 resource supercedes the 'carb' 0 resource.</p> <p>Correction in “Consider Using Bundles” (page 47): A bundle appears as a folder hierarchy on Mac OS X if the bundle bit is unset (not set as previously stated).</p> <p>Added information about <code>__appstart</code> to “Building Applications Using MPW” (page 59).</p> <p>Indicated in “Update Modified or Obsolete Functions” (page 74) and “The Basic Conversion” (page 102) that Carbon does not support the <code>diskEvt</code> event. Removed <code>diskEvt</code> case from Carbon version of Sample.</p> <p>Further subdivided “The Basic Conversion” (page 102) by adding sections “Installing the Standard Event Handlers” (page 103) and “Registering Your Own Event Handlers” (page 104).</p> <p>Added information about the event handler parameters in “The Application-Level Event Handler” (page 105).</p>

## Document Version History

**Table C-1** Carbon Porting Guide revision history (continued)

Version	Notes
11/15/00 interim draft	<p>General correction: specific references to CarbonLib 1.1 updated to CarbonLib 1.2.</p> <p>General correction: <code>CarbonStub</code> now renamed <code>CarbonLibStub</code>.</p> <p>In “Preparing Your Code for Carbon” (page 21), added a link to Technote TN2003, “Moving Your Code to Mac OS X.”</p> <p>Changed URL link in “Use the Carbon SDK” (page 26) to <a href="http://developer.apple.com/macosx/carbon/index.html">http://developer.apple.com/macosx/carbon/index.html</a>, as this location is more Carbon-specific and allows ADC members to download prerelease versions of the SDK.</p> <p>Declaration that <code>CarbonAccessors.o</code> is only a porting tool softened in “Begin With CarbonAccessors.o” (page 26) and “Functions in CarbonAccessors.o” (page 126). You can link against <code>CarbonAccessors.o</code> to simplify building non-Carbon applications from a Carbon code base.</p> <p>In “Conditionalize Quit Menu Items” (page 32), reworded the text to emphasize that the position of the Quit item is a feature of the user interface (Aqua versus Mac OS 8 and 9) rather than of the underlying system.</p> <p>Added more information to “Begin Transitioning to the Aqua Interface” (page 48), including details about Appearance Manager compliance, sheets, and help tags.</p> <p>In “Adopt a Terse Name for the Application Menu” (page 49) changed the recommended storage location for the name from <code>Info.plist</code> to <code>InfoPlist.strings</code>, because the latter allows the name to be localized.</p> <p>Simplified methods of transferring files between Mac OS X and Mac OS 8 and 9 in “Native Mac OS 9 Versus Mac OS X’s Classic Environment” (page 53), as file sharing is now fully supported.</p> <p>Added About box screen shot to “Modify the About Box” (page 78).</p> <p>Mentioned in “The Application-Level Event Handler” (page 105) that you could assign a command ID for a menu item in an ‘xmnu’ resource instead of calling <code>SetMenuItemCommandID</code>.</p> <p>Bug fix in Listing 5-1 (page 105): Added <code>DisposeRgn</code> call to the <code>kEventMouseMoved</code> case of the application event handler to deallocate memory from the <code>NewRgn</code> call.</p>

## Document Version History

**Table C-1** Carbon Porting Guide revision history (continued)

Version	Notes
10/24/00 interim draft	<p>Revised text in “Resources” (page 17) and “Move Resources to Data Fork–Based Files” (page 46) to emphasize that the preferred method for accessing application resources is by using CFBundle APIs. Also added that the 'cfrg' 0 and 'carb' 0 resources need to remain in the resource fork for CFM-based Carbon applications so the Mac OS X Finder can launch them properly.</p> <p>The Carbon Event Manager constant <code>kEventWindowSizeChanged</code> now replaced by <code>kEventWindowBoundsChanged</code>.</p> <p>In section “Check Your OpenGL Code” (page 36), the <code>OpenGLMemoryLibrary</code> library is now compatible with Carbon. Also, if you are building a Mach-O Carbon applicatiojn that uses OpenGL, you must call the <code>aglConfigure</code> function before creating any OpenGL contexts.</p> <p>Added screen shot of the ported Sample application to “The Carbon Version of Sample” (page 79).</p> <p>Added information about new Carbon technology “Multilingual Text Engine (MLTE)” (page 100).</p> <p>Added Index.</p>
10/12/00 review draft	<p>Correction in “How Does Carbon Work?” (page 14): <code>CarbonLibStub</code> changed to <code>CarbonStub</code>.</p> <p>Changed section “Adopt the Carbon.h Header” to “Modify or Conditionalize Your Headers” (page 31). You no longer need to adopt <code>Carbon.h</code>. The path required for the cc compiler is now <code>-I /Developer/Headers/FlatCarbon</code>. You can also use this path with the conventional Mac OS 8 and 9 headers when building on Mac OS X.</p> <p>Changed text in “Begin Transitioning to the Aqua Interface” (page 48) to indicate that your application automatically registers with the Appearance Manager when you link with <code>CarbonLib</code>.</p> <p>Added new chapters, “A Porting Example” (page 63) and “New Carbon Technologies” (page 97).</p> <p>Added new appendix, “The Sample Application” (page 133) which contains the source code to be ported in “A Porting Example” (page 63).</p>

## Document Version History

**Table C-1** Carbon Porting Guide revision history (continued)

Version	Notes
Revised Public Beta 9/7/00	<p>Updated software and header versions to reflect the latest available.</p> <p>Added new porting guideline “Modify or Conditionalize Your Headers” (page 31).</p> <p>Added info about using plists to signify Mac OS X Carbon applications in “Add a 'plst' 0 Resource” (page 32) and “Running Your Application on Mac OS X” (page 58).</p> <p>Correction in “Determine the Appropriate CarbonLib Version” (page 34):: Appearance Manager 1.1 is available in all versions of CarbonLib, not just 1.1 and later. Also, DataBrowser is now available back to System 8.6.</p> <p>“Handling Buffered Windows” (page 37) section added, which incorporates information from the older section “Drawing into Windows Without QuickDraw”.</p> <p>Added more specific event information (for example, which event to wait on) in answers to questions in “Window Dragging and Resizing Q&amp;A” (page 39).</p> <p>The Aqua guidelines document referenced in “Begin Transitioning to the Aqua Interface” (page 48) is now <i>Adopting the Aqua Interface</i>. Added URL pointer to the document.</p> <p>Added new porting guidelines: “Move Resources to Data Fork–Based Files” (page 46) and “Consider Using Bundles” (page 47).</p> <p>Added new build section “Building Applications Using MPW” (page 59).</p> <p>Added new sections “Changes to WDEFs” (page 114) and “Changes to MDEFs” (page 114) under “Custom Definition Procedures” (page 113).</p> <p>Removed private functions from <code>CarbonAccessors.o</code> list in Table A-3 (page 126).</p> <p>In Table A-3 (page 126), <code>QError</code> should be <code>QDError</code>.</p> <p>Removed functions accidentally identified as removed from <code>CarbonAccessors.o</code> in Table A-3 (page 126): <code>GetWindowKind</code>, <code>SetWindowKind</code>, <code>GetKeys</code>, <code>GetWindowSpareFlag</code>, <code>InvalidWindowRect</code>, and <code>InvalidWindowRgn</code>.</p>

Document Version History

**Table C-1** Carbon Porting Guide revision history (continued)

Version	Notes
Public Beta 7/11/00	<p>Major reorganization of material.</p> <p>“Introduction” (page 11) rewritten to reflect the current state of Carbon.</p> <p>Porting guidelines reorganized into sections: “Essential Steps for Porting Your Application” (page 25), “Additional Porting Issues” (page 33), and “Optimizing Your Code for Carbon” (page 43).</p> <p>Some existing porting sections were renamed to better integrate with the new sections.</p> <p>New porting guideline sections added: “Use the Carbon SDK” (page 26), “Target Mac OS 8 and 9 First” (page 26), “Use DebuggingCarbonLib” (page 30), “Adopt Required Carbon Technologies” (page 32), “Update Modified or Obsolete Functions” (page 31), “Determine the Appropriate CarbonLib Version” (page 34), “Examine Your Plug-ins” (page 36), “Adopt HFS Plus APIs” (page 45), “Consider Mach-O Executables” (page 46), “Adopt a Terse Name for the Application Menu” (page 49).</p> <p>Softened requirements for the contents of a <code>carb'0'</code> resource in “Add a 'plst' 0 Resource” (page 32). The resource can contain arbitrary data.</p> <p>Comparison of CFM versus Mach-O object file formats moved to the porting guidelines chapter under “Consider Mach-O Executables” (page 46).</p> <p>“Linking to Non-Carbon-Compliant Code” (page 36) moved to porting guidelines chapter.</p> <p>Directory paths in Mac OS X have changed:</p> <p><b>Path</b> <code>/System/Developer/Tools/LaunchCFMApp</code> <b>is now</b> <code>/Developer/Tools/LaunchCFMApp</code>.</p> <p><b>Path</b> <code>System/Administration/Terminal.app</code> <b>is now</b> <code>/Applications/Utilities/Terminal.app</code>.</p> <p>Function descriptions and other reference-like material moved to the Appendix: “Custom Definition Procedures” (page 113), “Functions for Accessing Opaque Data Structures” (page 114), “Functions in CarbonAccessors.o” (page 126), “Debugging Functions” (page 130), and “Resource Chain Manipulation Functions” (page 131).</p>

## Document Version History

**Table C-1** Carbon Porting Guide revision history (continued)

Version	Notes
	Revised contents of <code>CarbonAccessors.o</code> in Table A-3 (page 126) and Table A-4 (page 129).
Developer Preview 4	<p>Updated software and header versions to reflect the latest available (for example, CarbonLib 1.1 and Universal Interfaces 3.4d2).</p> <p>Added new section, “The Carbon Specification” (page 24).</p> <p>Added new sections describing preparations for Carbon conversion: “Don’t Pass Pointers Across Processes” (page 35) “Avoid Polling and Busy Waiting” (page 45) “Use Casting Functions to Convert DialogPtrs and WindowPtrs” (page 27) “Use “Lazy” Initialization for Shared Libraries” (page 45) “Check Your OpenGL Code” (page 36) “Begin Transitioning to the Aqua Interface” (page 48) “Provide Thumbnail Icons for Your Application” (page 49)</p> <p>Added information about avoiding preallocation and suballocators in “Manage Memory Efficiently” (page 43).</p> <p>Created new section, “Window Manager Issues” (page 37), to cover Window Manager porting issues in detail.</p> <p>In Table A-1 (page 119), added <code>SetMenuDefinition</code> as the accessor function for the <code>MenuProc</code> element in a <code>MenuInfo</code> structure.</p> <p>Added Table A-2 (page 123) listing QuickDraw accessor functions.</p> <p>Added information about transferring files between Mac OS 9 and Mac OS X computers in “Native Mac OS 9 Versus Mac OS X’s Classic Environment” (page 53).</p> <p>Revised contents of <code>CarbonAccessors.o</code> in Table A-3 (page 126)..</p> <p>Added list of functions removed from <code>CarbonAccessors.o</code> in Table A-4 (page 129).</p> <p>Emphasized that you cannot link with <code>InterfaceLib</code> if you link to <code>CarbonLib</code> in “Using CodeWarrior to Build a CFM Carbon Application” (page 54)</p> <p>Created new section, “Linking to Non-Carbon-Compliant Code” (page 36).</p> <p>Revised “Debugging Your Application” (page 60) to include specific information about debugging Carbon applications using GDB.</p> <p>Added this document revision history.</p>



# Index

---

## A

---

About box 78, 107  
ACCESSOR\_CALLS\_ARE\_FUNCTIONS 26, 70  
accessor functions 116  
    for handling universal procedure pointers 28  
    for Human Interface Toolbox structures 119  
    for QuickDraw data structures 123  
aglConfigure, calling from Mach-O Carbon applications 36  
Apple events 32, 76  
application address spaces 16  
application-defined functions 19  
application menu, naming convention for 49  
application threading 16  
\_\_appstart entry point in MPW 60  
Aqua  
    adopting in Carbon applications 48  
    changes to Sample application for 78  
    Quit menu item in 32, 76

---

## B

---

benefits of Carbon 12  
buffered windows, handling 37  
building Carbon applications using MPW 59  
building Carbon applications with CodeWarrior.  
    *See* CodeWarrior  
bundles 46, 47

---

## C

---

'carb'0 resource 32, 58  
Carbon  
    API composition of 13

    benefits of 12  
    defined 11  
    events. *See* Carbon Event Manager  
    feedback URL for 19  
    frameworks on Mac OS X 14  
    functions unavailable in 14  
    implementation on Mac OS X and  
        Mac OS 8 and 9 14  
    memory management in 43  
    plug-ins 36  
    printing in 18  
    SDK, location of 26  
CarbonAccessors.o 26  
    contents of 126  
    used to port Sample application 70  
    using with non-Carbon applications 27  
Carbon Dater tool 22, 64  
Carbon Event Manager  
    adding to Sample application 101  
    handling menu selections using 102  
    installing event handlers 103  
    keyboard events 102  
    overview 97  
    quitting the application 107  
    resizing windows with 42  
    standard event handlers 101  
    timers, in place of null events 45, 108  
    tracking window movement using 40  
Carbon events *See* Carbon Event Manager  
Carbon.h header 31, 73  
CarbonLib  
    versions of 34  
    versus Carbon frameworks 14  
CarbonLibStub stub library 14  
Carbon Printing Manager 32  
Carbon Specification 24  
Carbon Support folder 56  
casting functions 27, 115  
CFBundle APIs 47

- changes to this document 155
- CheckAllHeaps function 130
- Classic environment versus Mac OS 9 53
- Code Fragment Manager 17, 46
- CodeWarrior
  - building Sample application with 69
  - using to build Carbon applications 54, 55
- command IDs 107
- composition of Carbon 13
- control panels 18
- converting types WindowPtr and DialogPtr 27
- Core Foundation, overview 98
- custom definition procedures 18, 113
- custom menu definitions 114
- custom window definitions 42, 114

## D

---

- DataBrowser, overview 99
- data fork, resources in 17, 46
- data structures, opaque 19, 114
- debugging Carbon applications 60
- DebuggingCarbonLib 30
- debugging functions, new 130
- defprocs 18
- DetachResourceFile function 131
- dialog pointers 115
- dragging and resizing windows in Carbon 39
- Drag Manager, translucent dragging with 42
- DumpPEF tool 36

## E

---

- event handlers, Carbon Event Manager 101
- events. *See* Carbon Event Manager
- exit() in MPW 60
- Extended File Format 45

## F

---

- feedback URL 19
- FlatCarbon headers 31
- frameworks, Carbon 14
- FSpResourceFileAlreadyOpen function 132
- functions unavailable in Carbon 14

## G

---

- GDB debugger 60
- gestaltMenuMgrAquaLayoutMask selector 32, 77
- GetSharedLibrary for loading
  - non-Carbon-compliant code 36
- graphics pointers 27
  - versus window pointers 115
- graphics ports, creating and disposing in Carbon 125

## H

---

- headers
  - FlatCarbon 31
  - Universal 25
- HFS Plus 45

## I, J

---

- icons, creating and adding to applications 49
- idle events 45
- Info.plist file 48
- infoPlist.strings file 49
- initialization functions 45
- InsertResourceFile function 131
- InterfaceLib, linking with 26, 57
- IsHandleValid function 130
- IsHeapValid function 130
- IsPointerValid function 130

## K

---

keyboard events 102

## L

---

LaunchCFMApp tool 58  
 launching applications on Mac OS X using  
     LaunchCFMApp 58  
 lazy initialization 45  
 linking to non-Carbon-compliant code 36  
 low-memory globals 23, 29

## M

---

Mach-O file format, advantages and  
     disadvantages of 46  
 Mac OS 8 and 9  
     API compatibility with CarbonLib 34  
 Mac OS 9 versus Classic environment 53  
 main entry point in MPW 60  
 MDEFs 114  
 memory management in Mac OS X 43  
 menu item selection using Carbon events 102  
 Metrowerks CodeWarrior. *See* CodeWarrior  
 Mixed Mode Manager 17, 28  
 MLTE, overview 100  
 MPW, building Carbon applications using 59  
 Multilingual Text Engine, overview 100

## N

---

Navigation Services 32  
 null events 45

## O

---

opaque data structures 19, 114  
 OPAQUE\_TOOLBOX\_STRUCTS 26, 70  
 OpenGL in Carbon 36

## P

---

passing pointers across processes 35  
 Patch Manager 35  
 PEF containers 22, 46  
 pixel maps, drawing into 37  
 plist file 48  
 plist resource. *See* 'plst'0 resource  
     'plst'0 resource 32, 58, 75  
         versus Info.plist file 48  
 plug-ins 36  
 polling 45  
 preemptive scheduling of applications 16  
 prefix file information in CodeWarrior 57  
 printing in Carbon 18  
 Printing Manager 32  
 Project Builder, building Carbon applications  
     with 55  
 protected memory 16

## Q

---

quit events 107  
 Quit menu item 32, 76  
 quitting Carbon applications 32, 107

## R

---

resources  
     'carb'0 32, 58  
     in data fork 17, 46  
     'plst'0 32, 48, 58  
     'SIZE' 60

## S

---

Sample application  
     adding accessors to 70  
     adding Carbon events to 101  
     Carbon Dater report on 64  
     described 63  
     listings of Carbon version 79  
     original code listings 133  
     porting to Carbon 68  
 screen savers in Carbon 43  
 SDK, Carbon 26  
 SetMenuItemCommandID function 107  
 shared libraries, lazy initialization of 45  
 'SIZE' resource 60  
 standard definition procedures 18  
 standard event handlers for Carbon events 101  
 Standard File Package 32  
 \_\_startentry point in MPW 60  
 StdCLib 60  
 StdCRuntime.o 60

## T

---

TARGET\_API\_MAC\_CARBON 26, 57, 73  
 TrafficLight. *See* Sample application  
 transferring files between Mac OS 9 and  
     Mac OS X 54  
 trap tables 18, 35

## U

---

Universal Interfaces 25, 69  
 universal procedure pointers 17, 19, 28  
 update events 102, 111  
 utility functions for porting 125

## V

---

version history for this document 155  
 versions of CarbonLib 34  
 virtual memory on Mac OS X 17

## W, X, Y, Z

---

WDEFs 42, 114  
 Window Manager Port 39  
 window pointers 115