

Casady & Greene, Inc.

*FLUENT
LASER
FONTS™*

User's Manual

Macintosh® Downloadable PostScript® Compatible Fonts

For What It's Worth

Casady & Greene, Inc. is dedicated to creating quality software for a reasonable price. We would greatly appreciate your not giving away our work to your friends and colleagues. To recoup our investment and continue producing new products, we must sell quite a few copies.

Please help us to continue creating quality software for a reasonable price by suggesting to those who want copies that they purchase Fluent Laser Fonts. To get the most out of your Macintosh investment, your best interests are served by supporting companies that create software for the Macintosh.

Copyright Notice: ©1990 Casady & Greene, Inc.

This manual and the font files in the Fluent Laser Fonts Disks are copyrighted by Casady & Greene, Inc. None of the software may be copied or modified, in whole or in part, for distribution to, or use by, others, except the screen fonts. Printouts or other paper copies of test or artwork containing characters from Fluent Laser Fonts may be used for purposes other than creating fonts.

The bitmap screen fonts that come with Fluent Laser Fonts can be copied for use with the licensed printer(s). The screen fonts are not in the public domain, but printing services may give copies of the screen fonts to customers for formatting documents to be printed on the licensed printer.

The following trademarks or registered trademarks belong to their respective companies: Casady & Greene, Inc.: Fluent Laser Fonts; Richard Ware: Regency Script, Prelude Script, BodoniLaser; Altsys Corp.: Fontographer; Aldus Corp.: PageMaker, FreeHand, Aldus; Apple Computer, Inc.: Macintosh, MacWrite, MacPaint, MacDraw, Laser Writer; Software Supply: Suitcase; Adobe Systems Inc.: PostScript, Illustrator; Microsoft Corporation: Microsoft; Linotype AG: Linotronic, Linotype, Quark Inc.: Quark XPress; QMS Inc.: QMS, Laser Connection; Cricket Software: Cricket Draw; Manhattan Graphics Inc.: ReadySetGo; AST Research Inc.: AST.

Limited Warranty

All implied warranties concerning this manual and media, including implied warranties of merchantability and fitness for a particular purpose, are limited in duration to ninety (90) days from the date of original retail purchase of this product.

Casady & Greene, Inc. warrants Fluent Laser Fonts against defects in material and workmanship for a period of ninety days from the date of original retail purchase. Defective disks returned with proof of purchase within the warranty period will be replaced. This warranty applies only to products included in the Fluent Laser Fonts package.

If you are having problems with a disk and believe it may be defective, make sure you have followed the directions carefully. A Fluent Laser Fonts disk cannot be used to start a Macintosh, as it does not contain a System File. Once you have established that a disk is definitely defective, return it, with a complete description of the problem to:

Casady & Greene, Inc., P. O. Box 223779, Carmel, CA 93922

Be sure to include proof of purchase (copy of sales receipt), return address, and a description of the problem.

In no event will Casady & Greene, Inc. be liable for direct, indirect, special, incidental, or consequential damages resulting from any defect in the software or manual, even if Casady & Greene, Inc. has been advised of the possibility of such damages. In particular, Casady & Greene, Inc. shall have no liability for any programs or data used with Fluent Laser Fonts (including the cost of recovering or reproducing these programs or data).

The warranty and remedies set forth above are exclusive and in lieu of all others, oral or written, express or implied. No Casady & Greene, Inc. agent or employee or dealer is authorized to make any modification, extension, or addition to this warranty. Some states do not allow the exclusion of limited or implied warranties or liability for incidental or consequential damages, so the above limitation may not apply to you.

And now for this word from Apple...

APPLE COMPUTER, INC. MAKES NO WARRANTIES, EITHER EXPRESS OR IMPLIED REGARDING THE ENCLOSED COMPUTER SOFTWARE PACKAGE, ITS MERCHANTABILITY OR ITS FITNESS FOR ANY PARTICULAR PURPOSE. THE EXCLUSION OF IMPLIED WARRANTIES IS NOT PERMITTED BY SOME STATES. THE ABOVE EXCLUSION MAY NOT APPLY TO YOU. THIS WARRANTY PROVIDES YOU WITH SPECIFIC LEGAL RIGHTS. THERE MAY BE OTHER RIGHTS THAT YOU MAY HAVE WHICH VARY FROM STATE TO STATE.

Table of Contents

Introduction	1
About Fluent Laser Fonts	1
Screen Fonts	2
Printer Fonts	2
Type 1 vs. Type 3.....	3
Getting Started.....	4
The Short Instructions.....	4
The Complete Instructions	5
Installing Screen Fonts	5
To Install Screen Fonts	6
Installing Printer Fonts	8
Install for Automatic Downloading and ATM	9
Install On Printer Hard Disk	10
Install In Printer Memory	13
Using the Fonts	13
Sample Documents	13
Tips	14
Key Locations	14
Trouble-Shooting	16
Glossary	18
Sharing Screen Fonts	19
Site License Form for Multiple Printers	19

Introduction

Why use different fonts? In communicating with the printed word, the use of fonts gives the document a non-verbal message that is understood at an emotional level. When looking for a casual family restaurant in the Yellow Pages one would tend to skip over restaurant names printed in a formal script, such as Regency Script.

Conversely, if you were planning an intimate night out with a very special person, Regency Script would probably attract your attention. The style of the lettering sends messages about how the author feels about what he or she is writing. Fonts affect the connotation or mental image associated with a document. They can also provide a variety that pleases the eye. Fluent Laser Fonts help your message stand out in a crowd of Times and Helveticas.

About Fluent Laser Fonts

Fluent Laser Fonts can be printed, with maximum quality, at any point size allowed by the software application being used. Several applications, such as PageMaker, allow any size between 4 and 127 points (or even larger, using the **Scaling** option in the Print dialog box). Whichever size is used, the fonts will be printed at the maximum resolution of the printer.

When used with the Apple LaserWriter, Fluent Laser Fonts print at a resolution of 300 dots per inch. When printed on a Linotronic 300 they print at about 2500 dpi. This is possible because Fluent Laser Fonts are described as outlines in the PostScript® printer control language. The information on a particular character in a font consists of instructions on how to draw the outline of the character, and what areas should be filled with black. The printer fills the character as accurately as its own resolution allows.

Fluent Laser Fonts were created with Fontographer from Altsys Corp. Fontographer is a font editor that creates PostScript font files from information en-

tered in a graphic window on the Macintosh screen. Fluent Laser Fonts can be edited with Fontographer for your own use. However, you may not distribute modified versions to others. A recent court case has established that PostScript font files are protected by copyright laws. This includes files derived from PostScript font files.

Before using Fluent Laser Fonts, lock both disks in the package and make a backup copy of each.

Please Note: A basic knowledge of the Macintosh is necessary to make use of this manual. The operator should be familiar with copying files, copying disks, and other common terms and techniques, as described in the Macintosh manual.

The Fluent Laser Fonts package contains both printer fonts and screen fonts.

Screen Fonts

A screen font file has an icon that looks like a suitcase with an "A" on the side. It contains graphic images of the font for viewing on the Macintosh screen as well as tables of information for spacing and kerning the font. The screen fonts are connected to the printer fonts by their names. Selecting BodoniLaser from the Font Menu will cause the screen font to be shown on the screen, and when the document is printed on the LaserWriter the printer font will be used. Screen Fonts are the same type of fonts as Geneva and Venice. The graphic images are made up of dots at the 72 dots per inch resolution of the Macintosh screen. The terms "bitmap" or "dot matrix" are sometimes used to describe this type of font.

Printer Fonts

Printer font files can be identified by their icon, which looks like a LaserWriter. They usually have rather peculiar names, such as PreluScr (for Prelude Script) or CalliLas (for Calligraphy Laser). This is due to the naming convention established for PostScript fonts. Do not change the names. They must remain exactly as they are if they are to function properly.

Type 1 vs Type 3

There are two types of printer fonts commonly used in PostScript: Type 1 and Type 3. Prior to the release of Type 1 specifications in 1990, Type 1 technology was a proprietary secret of Adobe Systems, Inc. Other type companies were forced to use Type 3 technology. When Apple and Microsoft announced that Microsoft would license Apple's new outline font technology, Adobe immediately announced that it would release the Type 1 font technology. Since the release of Type 1 technology we have worked to convert all of Fluent Laser Fonts to Type 1.

Type 1 is generally of higher quality. The PostScript interpreter in a PostScript printer is designed to use Type 1 fonts more efficiently. It uses better logic when filling Type 1 outlines than it does when filling Type 3 outlines. Type 1 fonts also usually contain hints that improve stem width consistency on 300 dpi printers. Most Fluent Laser Fonts include such hints. However, some of our calligraphic fonts, that would not benefit from such hints, do not have them.

Type 1 fonts are required for use with Adobe Type Manager.

Type 3 fonts are still necessary in some situations. Some PostScript compatible printers only support Type 3 fonts because Type 1 technology was not available when they were designed. Also, some applications, such as TypeStyler™ 1.0, will only work with Type 3 fonts. Casady & Greene, Inc. can supply Type 3 versions of Fluent Laser Fonts for those who need them. In some cases the Type 3 fonts will be included in a folder called "If Needed". However, in most cases you will have to request Type 3 versions from Casady & Greene, Inc. by returning the original font disk (be sure to keep a backup copy) with a stamped, self-addressed envelope. The return envelope must have sufficient postage to return the new and original disks to you.

Getting Started

There are several things that must be done to install Fluent Laser Fonts on a hard disk before they can be used. Complete instructions are given for these procedures later in this booklet.

1. The screen fonts must be installed.
2. The printer fonts must be installed. In most cases they are copied into the System Folder for automatic downloading and/or using Adobe Type Manager. If you are using a printer that has a hard disk attached, such as the LaserWriter II NTX or Linotronic 300, the printer fonts can be installed on the hard disk with Apple's LW Font Utility.

The Short Instructions

For those who: do not like to read manuals, know where to find the Finder, and know their mouse like the back of their hand, here are some terse & cryptic statements that may be all you need to know about using Fluent Laser Fonts. This manual also contains complete instructions for the rest of us.

If these abbreviated instructions are even a little confusing, refer to the complete instructions before attempting anything.

1. Lock and backup the disk in the Fluent Laser Fonts package.
2. Install the screen fonts in the System file with the Font/DA Mover, Master-Juggler™, or Suitcase™.
3. Copy the Printer Fonts into the System Folder of the disk with which they will be used, or install them on the printer's hard disk with LW Font Utility.

If you followed all that, you are ready to use Fluent Laser Fonts. However, you will find useful information in the Using Fluent Laser Fonts, Tips, and Trouble Shooting sections.

The Complete Instructions

The very first thing to do is:

Lock the Fluent Laser Fonts disks by sliding the write-protect tab on the corner of the disk to an open position. When you can see through the square hole, the disk is locked. When the hole is obscured, it is unlocked. Locking the disks prevents accidental alterations.

Make a copy of the Fluent Laser Fonts disk. This can be accomplished by dragging the Fluent Laser Fonts disk icon onto the icon of a blank disk. When using Fluent Laser Fonts, always use the copy disk, and keep the original disk as a backup.

At this point you will need a System Disk (see System Disk in the Glossary) for installing Fluent Laser Fonts. This System Disk can either be a hard disk or a floppy disk. Hard disks are highly recommended.

Installing Screen Fonts

There are several ways to install screen fonts. The traditional method is to install them into the System File with the Font/DA Mover. Two current alternatives are the commercial products *Suitcase* by Software Supply and *MasterJuggler* by Alsoft. *Suitcase* and *MasterJuggler* are handy for shuffling fonts in and out of the Font Menu. If you wish to use these products, follow the instructions that come with them. There may be another alternative available by the time you read this. These instructions will only cover the traditional method of installation using the Font/DA Mover.

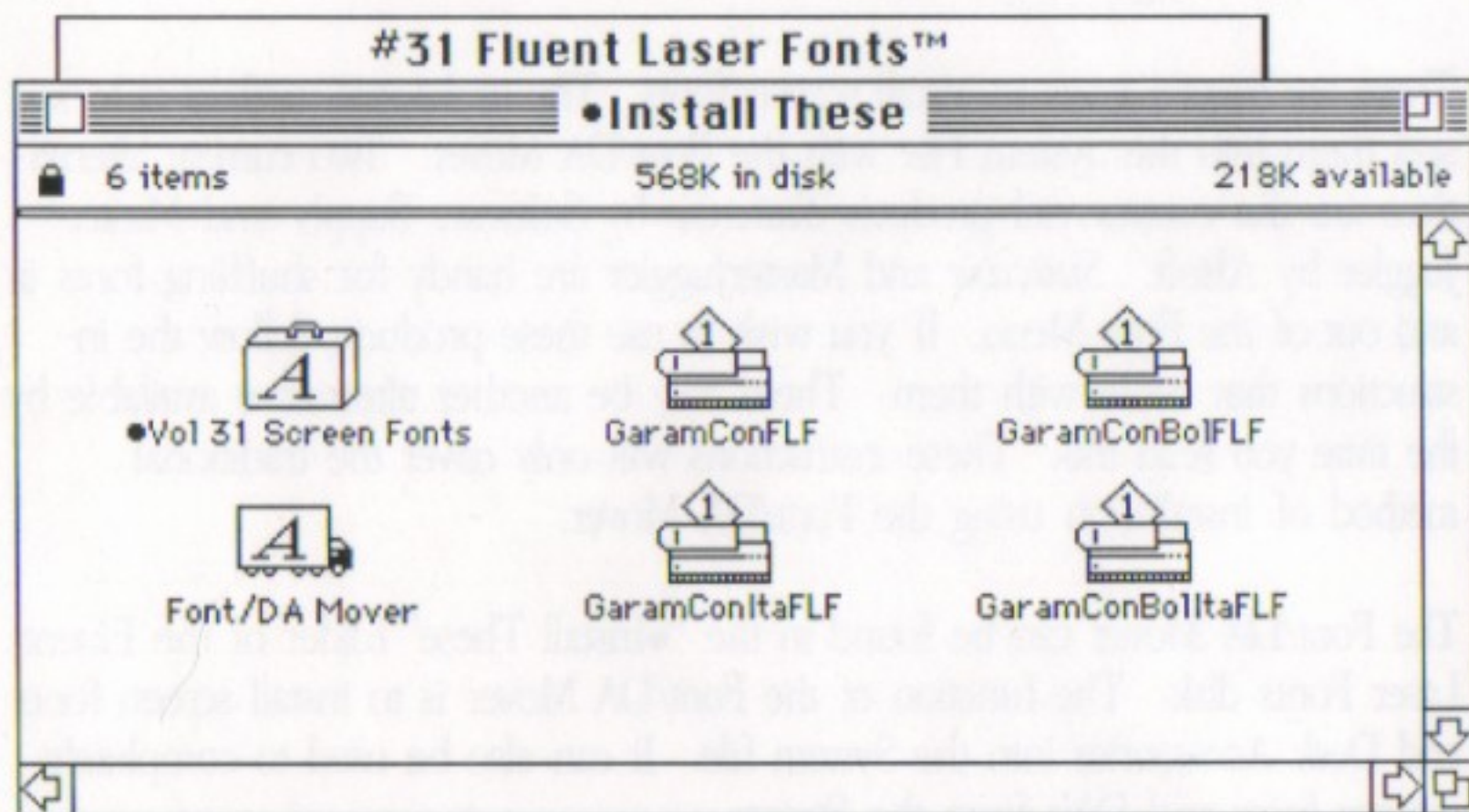
The Font/DA Mover can be found in the "•Install These" folder of the Fluent Laser Fonts disk. The function of the Font/DA Mover is to install screen fonts and Desk Accessories into the System file. It can also be used to completely remove fonts and DA's from the System.

Versions of the Font/DA Mover earlier than 3.8 should not be used. Using earlier versions could cause improper installation, resulting in various problems using the fonts.

The installation of all sizes of screen fonts will give you a more attractive screen display, but is not required for accurate spacing with some programs. More and more programs like PageMaker and Cricket Draw are now using a routine in the Macintosh ROM called fractional character spacing. The result is more accurate spacing on the printed documents no matter what size screen font is installed. With older programs like MacWrite 4.5 that do not use fractional character spacing, best results will be obtained if all the sizes you use are installed. Microsoft Word has ☒ **Fractional Widths** as an option in the Page Setup window. We recommend that you tick this box.

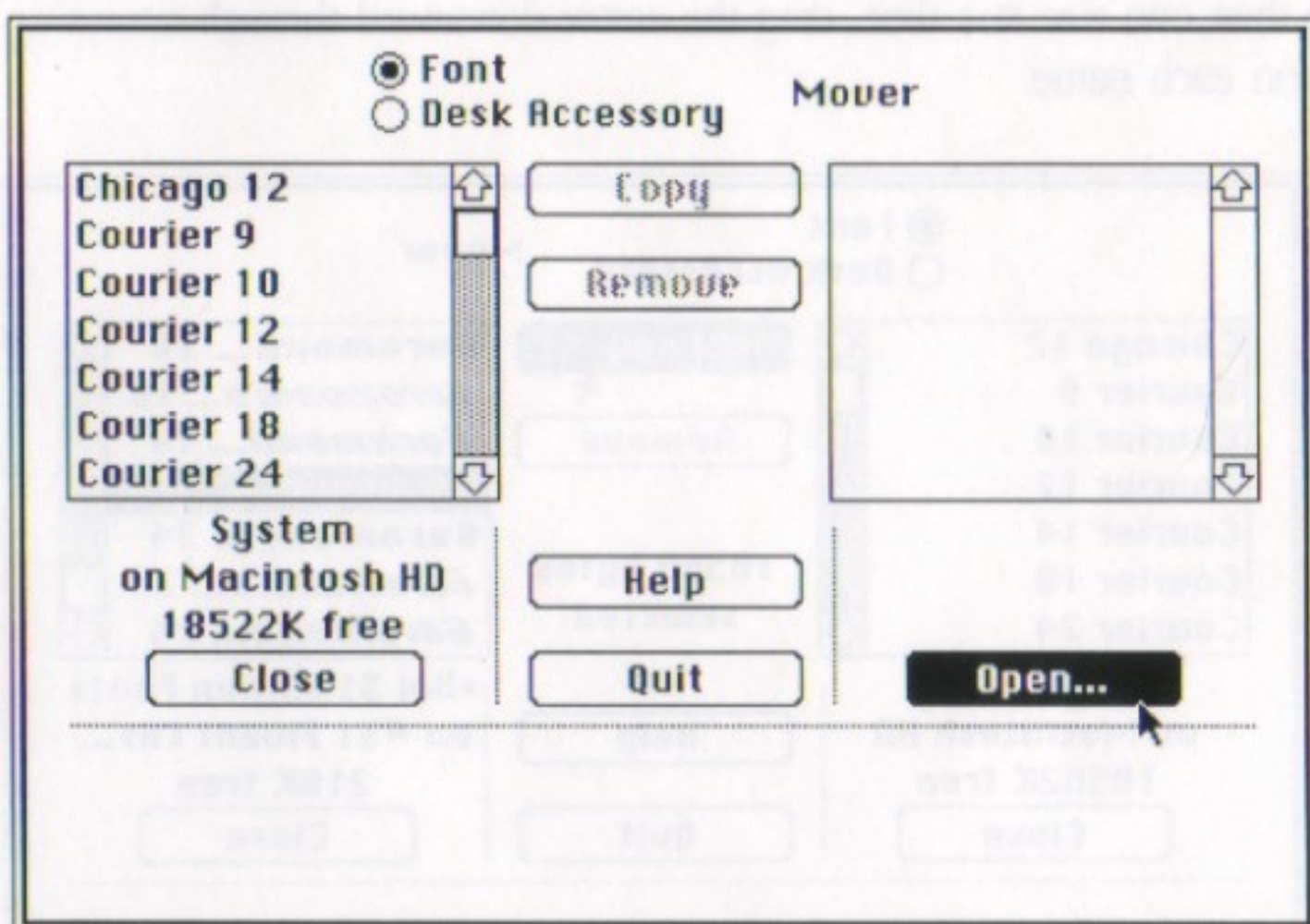
To Install Screen Fonts:

1. Start the Macintosh with the System Disk or Hard Disk that is to have screen fonts installed. Fonts will be installed on the Startup Disk. Its icon should appear at the top right corner of your screen.
2. Insert the Fluent Laser Fonts Disk into an available disk drive and open the "•Install These" folder.

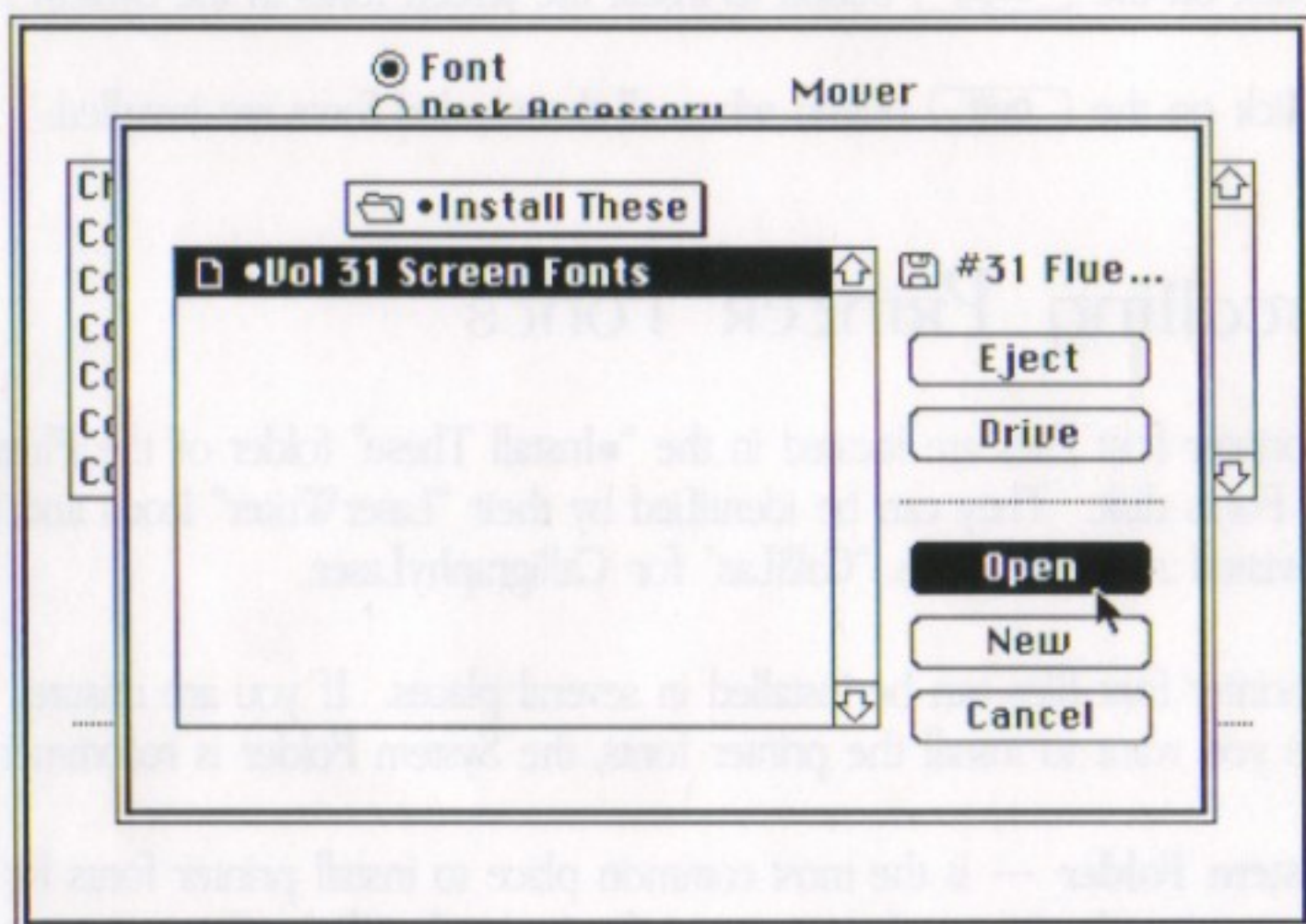


3. Double-click on the Font/DA Mover icon. The Font/DA Mover will open and display a list of the fonts already installed in the System.

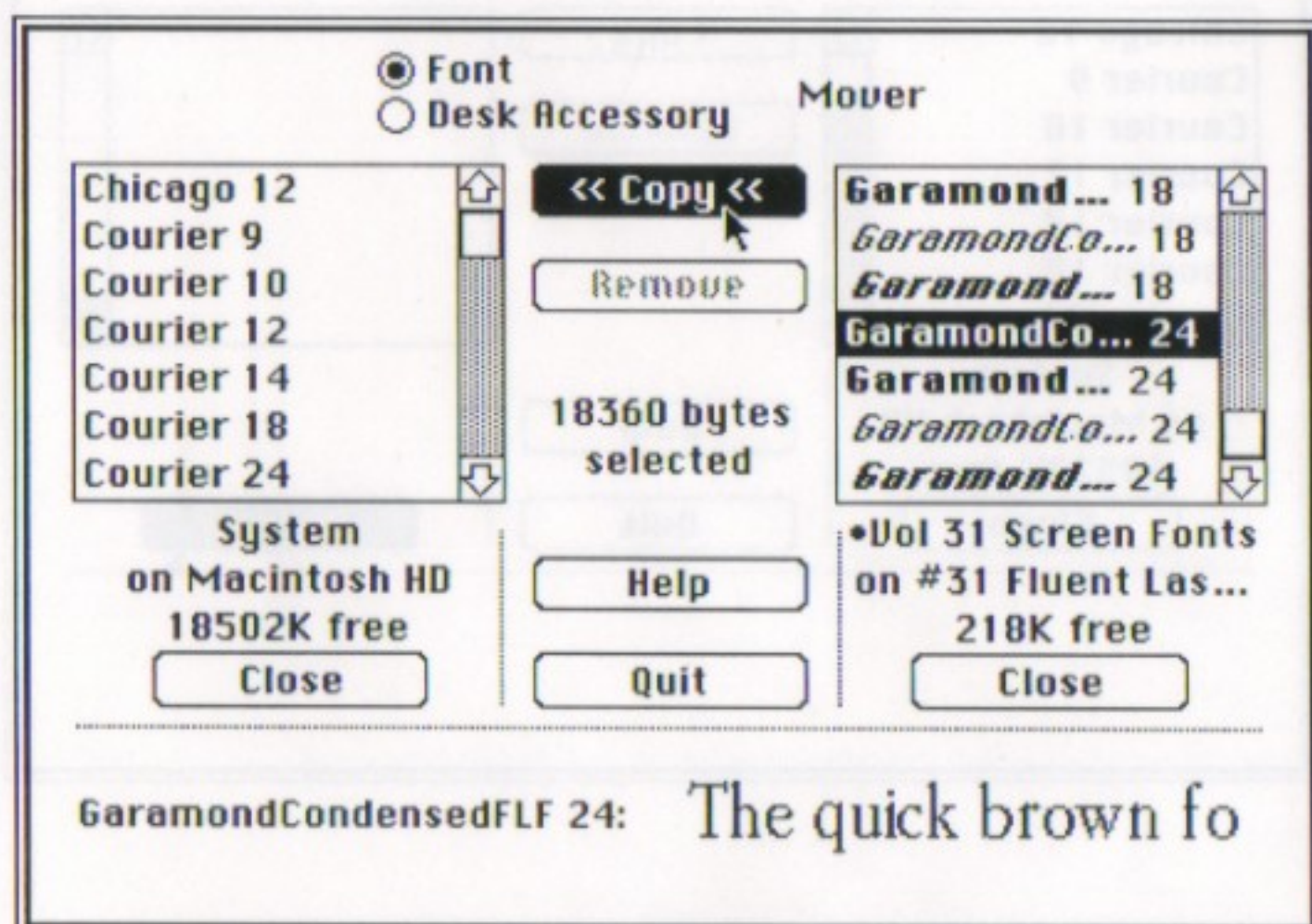
4. Click on the **open** button under the blank window.



5. Open the screen fonts file in the "•Install These" folder.



6. Select a desired screen font by clicking on the name. If only one font is selected, a sample will be displayed at the bottom of the window. To select more than one size at a time, drag the arrow downward through names or shift click on each name.



7. Click on the **Copy** button to install the screen fonts in the System File.
8. Click on the **Quit** button when all the needed fonts are installed.

Installing Printer Fonts

The printer font Files are located in the "•Install These" folder of the Fluent Laser Fonts disk. They can be identified by their "LaserWriter" icons and their abbreviated names such as "CalliLas" for CalligraphyLaser.

The printer font files can be installed in several places. If you are unsure where you want to install the printer fonts, the System Folder is recommended.

● **System Folder** — is the most common place to install printer fonts for automatic downloading to the printer or for use with ATM. Once you copy the printer fonts into the System Folder you can forget about them. The Las-

erWriter software will take care of sending them to the printer when they are needed and removing them when the document has finished printing. If you are using Adobe Type Manager, the printer files should be in the System Folder. See: Installing FOR Automatic Downloading and ATOM.

- **Printer Hard Disk** — for PostScript printers that have a hard disk attached. Documents print faster and take less printer memory when fonts are installed on the printer disk. The VT600 as well as the Linotronic 100 and 300 have hard disks. The Apple LaserWriter II NTX can have a SCSI hard disk attached. If you are using Adobe Type Manager, copies of the printer files should also be in the Mac System Folder. See: Install On PRINTER Hard Disk

- **Printer Memory** — sometimes useful for reducing the print time on printers that do not have a hard disk. PageMaker documents that have many different text blocks using the same font will print more quickly if the font is manually downloaded to printer memory. The trade off is speed for memory. It is easy to fill up the memory on some PostScript printers. You should be familiar with managing your printer's memory before using this method. Re-setting the printer will remove fonts from its memory. See: Install In PRINTER MEMORY.

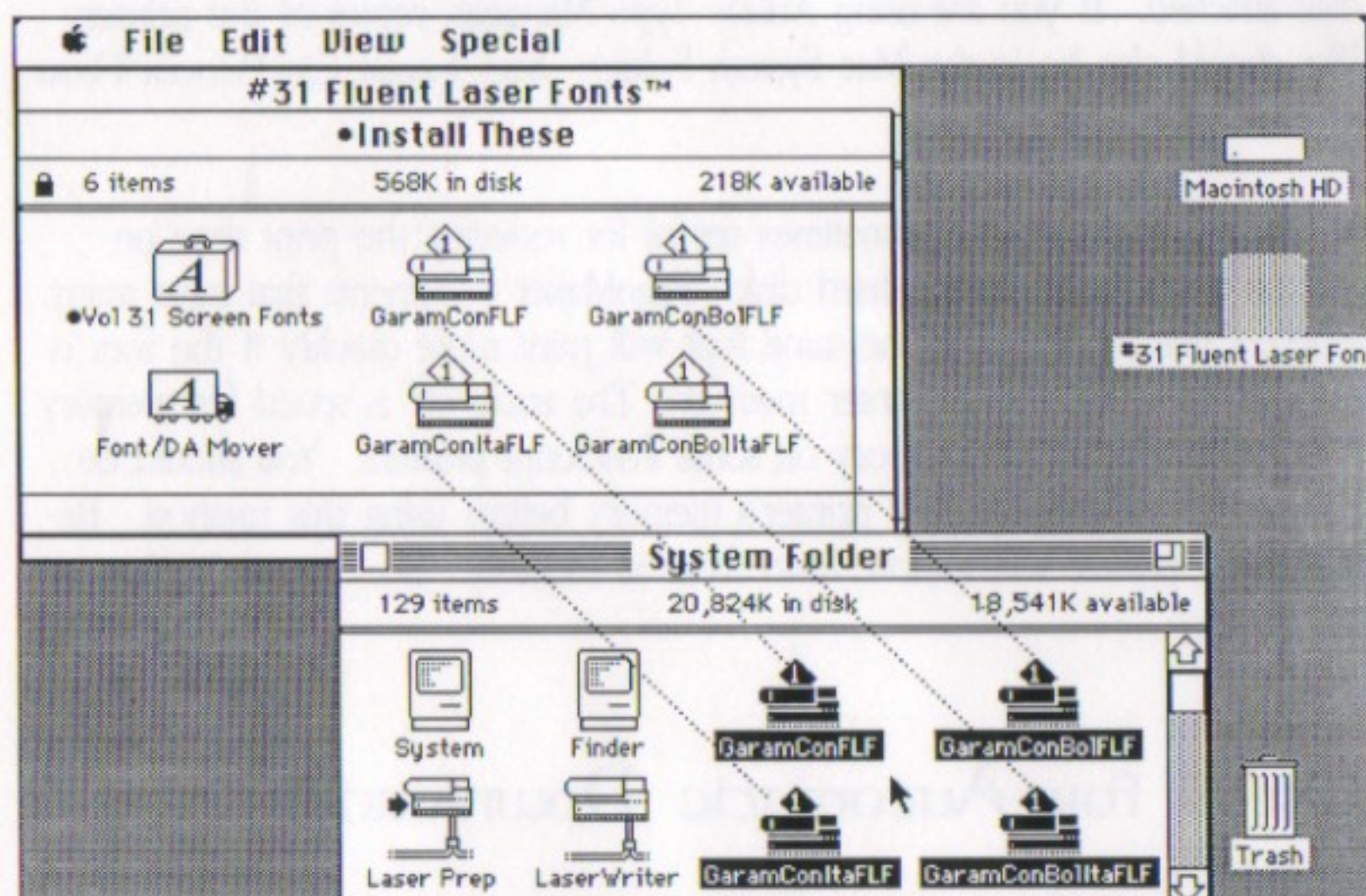
Install for Automatic Downloading and ATOM

Fluent Laser Fonts are most often installed in the System Folder for automatic downloading and/or Adobe Type Manager.

Copy the printer fonts into the System Folder of the Startup Disk. This is done by dragging the printer Font icons from the Fluent Laser Fonts disk into your system Folder. See illustration on next page.

DO NOT put the printer font files into their own folder inside the System Folder. The printer font files must be in the same folder as the System, Finder, LaserWriter, and LaserPrep files.

If your Mac has a hard disk, make sure that it has only one System Folder and one System file installed. Multiple copies of the System file will cause the Macintosh to become confused and Fluent Laser Fonts may not download properly. Many users have accidentally copied extra System Folders onto their hard disk while installing applications. A good way to check for extra Systems is to use the Find File desk accessory in the Apple Menu and search for "System." If you find more than one System Folder, determine which one you wish to use and drag the others to the Trash.



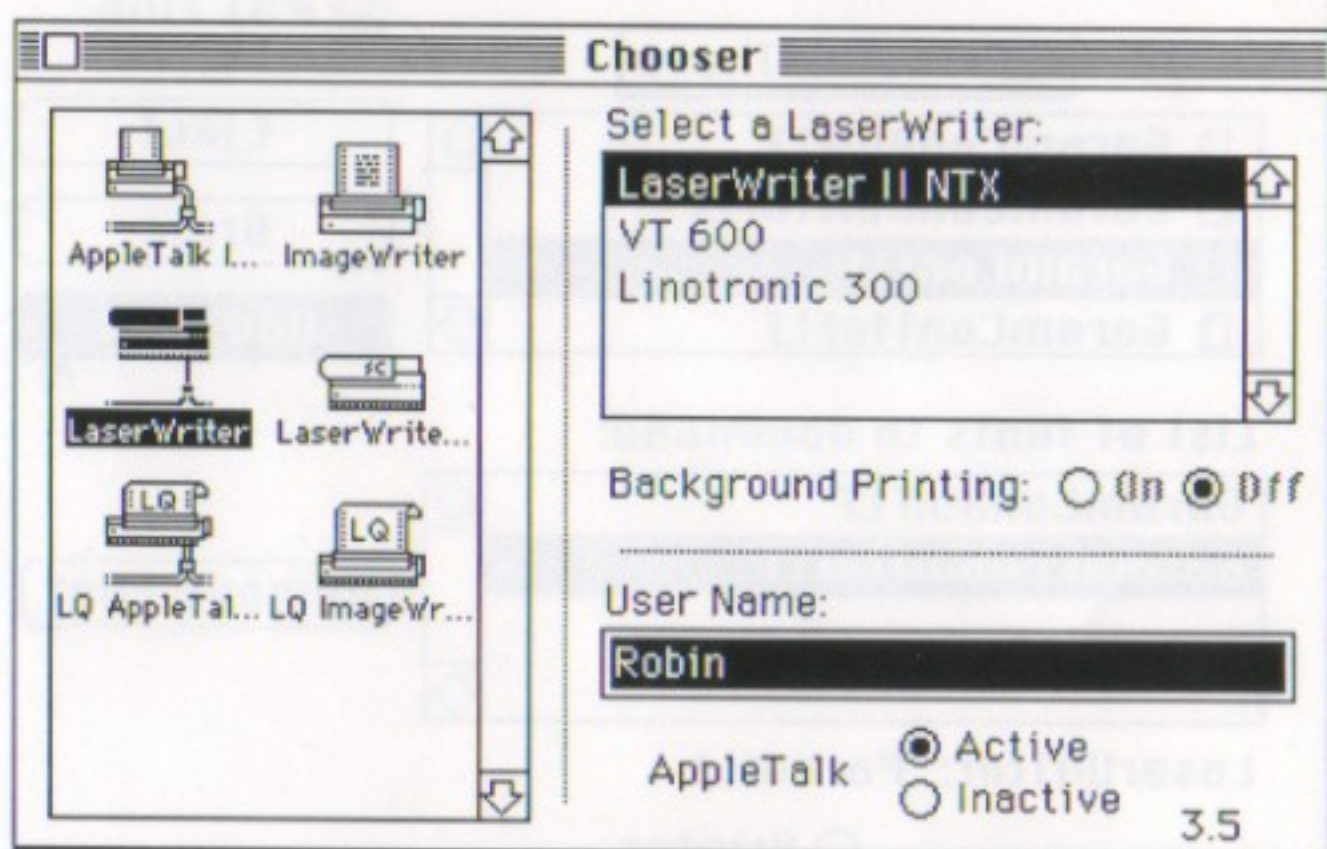
Install On Printer Hard Disk

Fluent Laser Fonts can be installed on the hard disk attached to a LaserWriter II NTX with Apple's LaserWriter Font Utility program. A copy of LaserWriter Font Utility is included in the Fluent Laser Fonts disk. This utility was designed to be compatible with all PostScript printers, however we have not been able to thoroughly test it on other printers. There may be compatibility problems with fonts that have already been installed with other font downloaders. The Apple LaserWriter Font Utility should work properly if it is used to initialize the printer hard disk and other downloaders are not used with it.

This program is easy to use if you are familiar with using a Macintosh. Each dialog box that appears has a **Help** button that displays instructions for use. The following instructions should get you through installing Fluent Laser Fonts on your printer's hard disk, but if you want more information click one of the **Help** buttons.

If you are using an NTX with a hard disk that has not yet been initialized, make sure the disk is powered on and has come up to speed before powering the printer on. Otherwise, the printer will not know that the disk is attached.

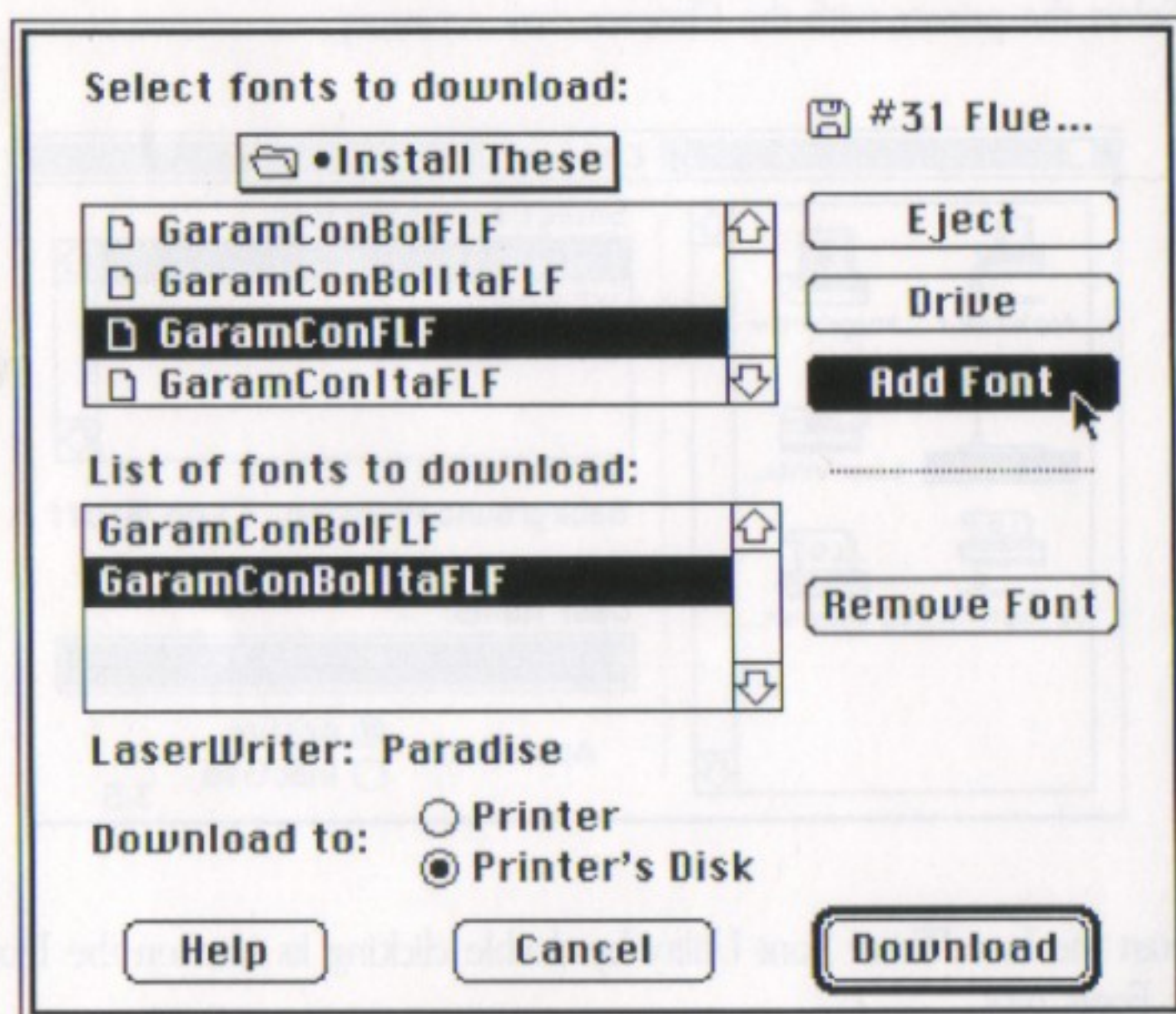
1. Select the printer with the Chooser desk accessory.



2. Start the LaserWriter Font Utility by double clicking its icon on the Fluent Laser Fonts disk.
3. Click the **OK** button.
4. Select **Download Fonts** from the **File** Menu.

A dialog box will appear. Near the bottom of the box the name of the printer will appear with the words, **Download to:** and the choice of ☐ **Printer** or ☒ **Printer's Disk**.

5. Make sure the ☒ **Printer's Disk** button is selected. If it is greyed out, then the disk either needs to be initialized or it started too slowly to be recognized by the printer.
6. Open the "•Install These" folder on the Fluent Laser Fonts disk.
7. Add the Fonts to the **List of Fonts to download** by double clicking on the abbreviated font name.



8. Click the **Download** button or press the **return** key.

The LaserWriter Font Utility will install the fonts you selected on the printer's hard disk and give you a message that the installation was successful.

Install In Printer Memory

The procedure for installing fonts in printer memory is very similar to that of installing them on the hard disk. The difference is that the **Download to:** ☒ **Printer** button should be selected instead of the ☐ **Printer's Disk** button. If you do not have a hard disk attached to your printer the ☐ **Printer's Disk** will be grey and unavailable. The number of fonts that can be downloaded into printer memory depends on the amount of memory available. The area that is used to store fonts is also used for the prep files. In a LaserWriter Plus only two to four can be downloaded at one time. To remove fonts from printer memory, power the printer off or reset it with a software utility like LaserStatus from CE Software.

Using the Fonts

Once Fluent Laser Fonts are properly installed they are as easy to use as the built-in fonts. Simply make selections in the Font menu of most programs and the required fonts will be automatically downloaded into the LaserWriter during printing. The number of fonts that can be used in a document depends on the program and the amount of memory in the printer.

Sample Documents

The Fluent Laser Fonts disk contains a PICT file that illustrates the key locations of the different characters in the font. This document can be opened in SuperPaint, MacDraw, MacDraft and other drawing programs. It can also be imported into many of the page layout programs like PageMaker.

Tips

- Not all Fluent Laser Fonts have bold versions. If you select **Bold** in the **Style** Menu for a font that does not have a bold version, the results will be less than satisfactory. The printer will print two images of the font, one slightly offset.
- The number of fonts that can be used in a document depends on the available memory in the printer and the setting in the **Page Setup** window. Most **Page Setup** windows have an **Option** button that opens an Options window. The Options window contains two options that are of interest here. **Larger Print Area (Fewer Downloadable Fonts)** takes some of the printer memory away from fonts and uses it for imaging a larger area on the page. **Unlimited Downloadable Fonts in a Document** allows the printer to clear a font from memory after it is used to make room for the next font.
- In script or cursive Fluent Laser Fonts, the upper-case characters are spaced so that they will work correctly with the lower-case characters in text. If you use them together in a string of all caps, they will probably overlap each other and not look very good. Also note that in some script or italic fonts, certain characters kern into the characters following or leading. If a line begins with a character which kerns to the left (like an italic f) you might need to insert a space before that first character for it to display properly. This is a display problem and should not affect printed output.

Key Locations

For quick reference a Key Caps desk accessory is provided by Apple with every Macintosh. When it is selected a layout of the keyboard is displayed on the screen and the words **Key Caps** appear in the menu bar. Opening the **Key Caps** menu reveals a list of fonts in the System. The selected font appears in the keyboard illustration. Holding down the Shift and/or Option keys will reveal the characters accessed by those keys. Some characters in a font are accessed by two strokes. These characters do not appear in the Key Caps desk accessory.

+ = à è ì ò ù À

+ = á é í ó ú É

+ = â ê î ô û

+ = ã ñ õ Ñ

+ = ä ë ï ö ü ÿ Ä Ö Ü

- All Fluent Laser Fonts have the following special characters which are accessed by the option key:

■ (square bullet)

⌘ (Command key)

🍏 (Apple)

☐ (check box)*

✓ (check mark)*

- * If the check box is followed by the check mark in a program that uses automatic kerning, the check mark will be inside the check box.

- You can improve the appearance of your document by using the “true” quotation marks and single quotes.

“ (left quote)

” (right quote)

‘ (left single quote)

’ (right single quote)

- Also, use the so-called “hard” hyphen and space so that specific words will be not be separated at line breaks.

– (n dash)

— (m dash)

(hard space)

Trouble-Shooting

If the following tips do not solve your problems, please call Font Technical Support at (408) 624 8716. Monday-Friday, 9 am to 5 pm Pacific time.

The font looks ragged or lumpy when printed.

In certain situations the bitmap screen font is used by the printer instead of the correct PostScript printer font. This happens when the printer font could not be found by the LaserWriter driver software. Some possible causes are:

- a. Printer font is not in the System Folder, or it is in a folder within the System Folder.
- b. The printer font has been renamed. The LaserWriter driver looks for the font by name. If the name is changed, the driver will not recognize it.
- c. An old Font/DA Mover was used to install the screen fonts. Versions prior to 3.8 should not be used. Use the Font/DA Mover that came with Fluent Laser Fonts.

The LaserWriter gave a VM error message and did not print.

Too many downloadable fonts or styles are being used in one document.

Select: ☒ **Unlimited Downloadable Fonts in a Document.**

This setting is found by clicking the **Options** button in the **Page Setup** window.

No message, no printing, nothing. The LaserWriter message box does not appear on the screen when attempting to print.

- a. Chooser has the ImageWriter as the selected printer. Save your document, if you have not done so. Open Chooser and select the LaserWriter icon. The name of the printer should appear highlighted in the window. If it does not appear, try 'b.' below.

b. Check the cables. AppleTalk cables can become loose or completely disconnected if there is any tension on them.

Cannot Find Printer.

a. The printer is turned off. Turn it on, wait for the startup page to be printed, reopen Chooser and select the printer.

b. The printer has been reset. When the reset cycle is complete, open Chooser and reselect the printer.

Spacing between characters and/or words is not good.

a. Fractional character spacing is not being used. This could be caused by: the fractional character spacing option is turned off, the program does not utilize fractional character spacing, or you have an older Mac with 64K ROM and single sided disk drives. This problem is exaggerated when the font is being used in a point size radically different than the screen fonts installed. For example, if only a 12-point screen font is installed and the font is used at a much different point size, such as 30 points, the spacing may not be accurate. Install screen fonts closer to the size being used.

b. Full or fill justification is being used. In order to align both the left and the right margins of text, as in typical newspaper and magazine articles, the program is introducing space between words and/or characters to fill the line out to the right margin. If this document is changed to left alignment the spacing should return to normal.

When a document is used with a different System File, it changes from a Fluent Laser Font to Geneva, even though the font is installed in both Systems.

The solution is to highlight the text involved and reselect the font. Somehow the font has been renumbered in one of the Systems. When the Font/DA Mover is installing fonts in the System file it may change the font's resource number. Fonts can also be renumbered with utilities provided with products like *Suitcase*.

Glossary


Application Software — A program such as MacWrite, MacDraw, ReadySetGo, or PageMaker.

ATM — Adobe Type Manager. A software product that displays Type 1 PostScript fonts on the Macintosh Screen. This product is useful for displaying large sizes.

Automatic Downloading — The computer takes care of sending the printer font to the printer when it is needed. You don't have to worry about it. This is the most common method of using Fluent Laser Fonts.

Manual Downloading — installing a printer font in a printer with a utility program such as the LaserWriter Font Utility. The font can be installed in the printer's memory, where it remains until the printer is reset or powered off. If the printer has a hard disk attached, the font can be installed on the hard disk. A font will stay on the hard disk until it is removed with the utility that installed it, or until the hard disk is reinitialized.

Bitmap fonts — are made up of dots and have a fixed size and resolution. Macintosh bitmap fonts have a resolution of 72 dots per inch. In order to have both a 12- and a 24- point font, two separate fonts must be created. When fonts are scaled to other sizes the results are not always satisfactory. The term "bitmap" refers to a method of storing images in which one dot takes one bit of memory.

DA's — Desk Accessories, usually found in the  menu.

Download — in this manual refers to the process of sending a printer font to the printer. Downloading can take place automatically, where the LaserWriter software sends a font to the printer during the printing of a document containing that font. Fonts can also be downloaded manually by using the LaserWriter Font Utility program. This program allows you to install fonts in the memory or the hard disk of the printer.

Finder — this is the program that usually runs when the Macintosh is started. It is sometimes called the Desktop, and shows icons for files, programs, and disks.

PostScript® — is a computer language by Adobe Systems designed to control printing devices, such as the Apple LaserWriter. Fonts described in the PostScript language can be printed at almost any size, while maintaining maximum quality. Printer fonts are also device-independent. This means that if a printer font is used on the LaserWriter, it is printed at 300 dots per inch quality, and if it is printed on Linotronic 100 it will be printed at about 1250 dpi quality.

Printer Driver — software needed by the Macintosh to communicate with a printer. The LaserWriter needs the LaserWriter driver and LaserPrep file, and the ImageWriter needs the ImageWriter driver. These files are usually found in the System Folder. PageMaker uses its own prep file called AldusPrep.

Startup Disk — The disk containing the System file (see System Disk) that is currently being used by the Macintosh, and is usually the disk used to start the Macintosh. Its icon will appear at the top right corner of the screen. When a hard disk is being used, the hard disk is usually the Startup Disk.

System Disk — any disk that has the System, Finder, LaserWriter, and LaserPrep software files in a folder called System Folder. Only a System Disk can be used to start a Macintosh. When a hard disk is used, it is almost always a System Disk. If you need more information about what is required on a System Disk, see your Macintosh manual.

Sharing Screen Fonts

Fluent Laser Fonts screen fonts may be used on any Macintosh for formatting documents to be printed on a licensed printer. They may not be resold unless they are on a disk manufactured by Casady & Greene, Inc.

Site License for Multiple Printers

The purchase of a Fluent Laser Fonts package licenses the PostScript fonts in that package for use on one PostScript™ printing device, such as a LaserWriter™. For use on more than one printer, a site license must be purchased for \$20 per printing device.

This version of Fluent Laser Fonts will work with a Macintosh® using ATM (Adobe Type Manager) or connected to any PostScript-equipped printer including the original LaserWriter®, LaserWriter Plus, IINTX and IINT, the Linotronic® 100 and 300, the Varityper® VT-600™, as well as the PostScript-equipped printers from AST®, QMS®, Laser Connection™, and other companies.

These fonts can be used in almost all Macintosh programs that have a font menu. PageMaker®, ReadySetGo™, Quark XPress™, MacWrite™, MacDraw™, Microsoft® products, Aldus FreeHand™, and Adobe Illustrator™ are just a few of the many programs that support Fluent Laser Fonts. Fluent Laser Fonts will print at any size allowed by your software, producing quality results at the maximum resolution of your printer.

Included in this package are: printer font files for automatic downloading that make Fluent Laser Fonts as easy to use as the built-in fonts, Apple's LaserWriter Font Utility for manual downloading to printer memory or hard disk, screen fonts for viewing on the Mac, and Apple's Font/DA Mover for installing screen fonts.