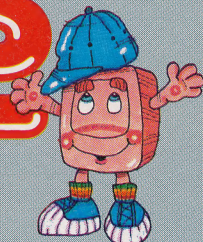
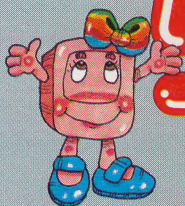
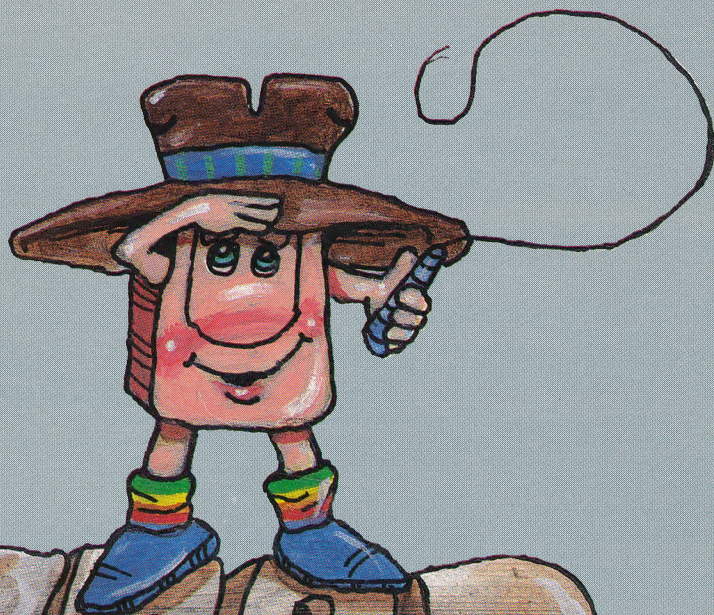


MACKIDS™

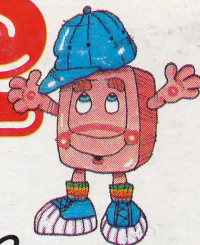
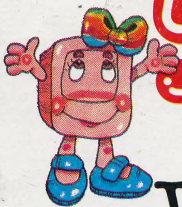


CHAPTER 1



Mack

MACKIDS™



WordSearch Deluxe

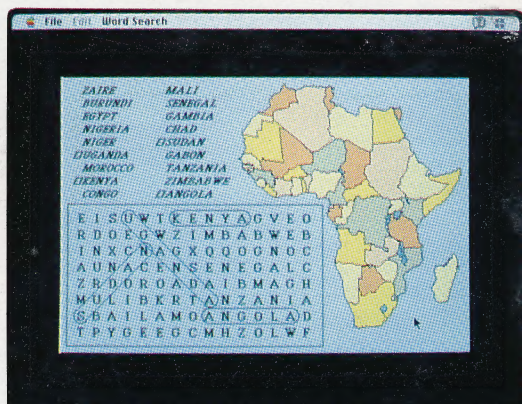
WordSearch Deluxe is a must have for teachers, newsletter editors and puzzle enthusiasts. Improve your vocabulary in any subject, or just have fun!

- **Create hidden word puzzles**, just like the ones you've seen in newspapers, magazines and schools. Type in a list of words or import them from a word processor (sorted and spell-checked)! WordSearch Deluxe hides them in the directions you choose, in a maze of random alphabetic characters.

- **On screen or on paper.** Solve the puzzle on the screen or print it out on paper and use a pencil. Either way they're fun to create and fun to play! The key can also be printed.

- **Add art and color.** With WordSearch Deluxe and the draw or paint program of your choice, you can embellish your brain-teaser with clip art or with your own designs in color or black and white. Your imagination is the limit!

- **Cut and paste digitized sounds!** Instructions show you how to cut and paste digitized sounds already in your system. Use the sound recording program of your choice to create new



sounds to use as fanfare when a word is found or when the puzzle is solved.

- **Flexible layout.** Change the size, shape and position of the puzzle at any time to suit your whim.

- **Publish!** Export your puzzle from WordSearch Deluxe into the page layout program of your choice for publication! WordSearch Deluxe will work with any page layout program that can import a PICT file.

We're sure that you'll enjoy making and solving an endless variety of word puzzles using this program and your own imagination. Happy searching!

Fun for all ages.

Copyright 1986, 1991 Nordic Software, Inc. Macintosh is a trademark licensed to Apple Computer, Inc. MacKids is a trademark of Nordic Software, Inc.

ISBN # 0-940081-62-8

Nordic Software, Inc.

P.O. Box 6007 • Lincoln, NE 68506-0007



0 91381 48714 6

WordSearch

Deluxe

CHAPTER 1

Application Disk



MACKIDSTM



For Apple Macintosh™

Copyright 1986 by Nordic Software, Inc.

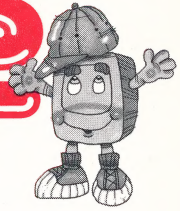
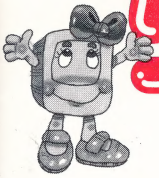
Macintosh is a trademark licenced to Apple Computer, Inc.



A0097D21



MACKIDS™



WordSearchTM *Deluxe*

by Jim Wrenholt

Artwork by Marc Harrison

Documentation by Kent Porter & Eldonna Rayburn

Published by Nordic Software, Inc.

Thanks for purchasing WordSearch Deluxe. We're sure you'll enjoy making and solving an endless variety of word puzzles using this program and your own imagination. To be informed of other entertaining titles in the MacKids line of educational software, be sure to fill out and return the registration card.

WordSearch Deluxe allows you to create your own hidden-word puzzles, just like the ones you've seen in newspapers, magazines and schools. Type in or import a list of words. WordSearch Deluxe hides them in the directions you choose, in a maze of random alphabetic characters. You can solve the puzzle on the screen, or print it out and use a pencil and paper. The key can also be printed.

You can include color and graphics in your puzzles. Add your own sounds to be played when the puzzle is solved. Change the size and layout of the puzzle to suit your needs.

Export your puzzle from WordSearch Deluxe into the page layout program of your choice for publication! WordSearch Deluxe will work with any page layout program that can import a PICT file.

Happy puzzling!

Table of Contents

| | |
|--------------------------------|----|
| About This Document | 3 |
| Installing WordSearch Deluxe | 3 |
| Playing a WordSearch Puzzle | 4 |
| Word Directions | 6 |
| Hints | 7 |
| Creating a New Puzzle | 7 |
| Editing a Word List | 8 |
| Printing a Puzzle | 9 |
| Adding Sound | 9 |
| Colorizing and Adding Graphics | 11 |
| Changing Fonts | 12 |
| Changing the Layout | 12 |
| Importing a Word List | 13 |
| Exporting a Puzzle | 14 |
| Keyboard Short Cuts | 14 |
| Menu Item Summary | 15 |

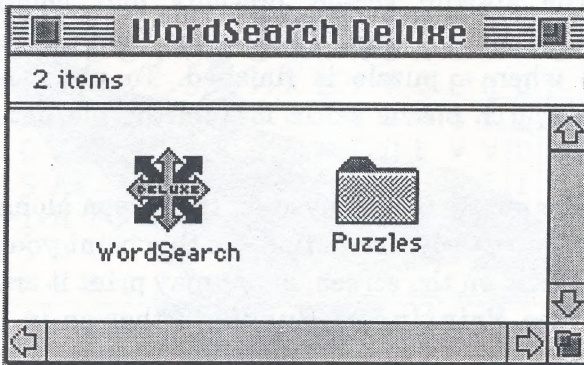
About This Document

This booklet will guide you to an understanding of the features of WordSearch Deluxe. These instructions assume that you know how to create a folder, how to “drag” items and know what an “icon” is. You also need to be familiar with standard Macintosh facilities such as the control panel device and copy and paste operations. If you are unfamiliar with these terms, spend some time with your Macintosh manual before going on.

Installing WordSearch Deluxe

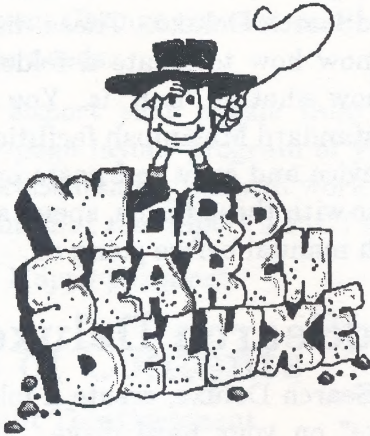
To install WordSearch Deluxe, create a folder titled “WordSearch Deluxe” on your hard drive. Insert the WordSearch Deluxe diskette into your floppy drive and open the diskette by double-clicking on its icon. Drag the WordSearch Deluxe icon to the new folder you created on your hard drive. Drag the Puzzles icon to the new folder you created on your hard drive. Eject the diskette. Store this disk in a safe place. It is your backup copy.

When you are finished, the new folder on your hard drive should look like this:



To start WordSearch Deluxe, double-click on the WordSearch icon.

Playing a WordSearch Puzzle



MACKIDS™

WordSearch Deluxe

by Jim Wrenholt & Kent Porter

© 1991 by Nordic Software, Inc.
All Rights Reserved.

New

Open

Help

Quit

This program is NOT in the public domain
Please, do NOT copy for others.

When WordSearch is launched, your initial options are to create a new puzzle, open an existing one, get help or quit. There are a number of sample puzzles included with WordSearch Deluxe. You can play one of these or create your own. Keep in mind that even if you have played a puzzle once, it can still be a challenge. Each time you open a puzzle it is completely reshuffled. You can play the same puzzle over and over without seeing the same solution twice!

The startup screen presents four choices: New, Open, Help and Quit. These same four choices will return when a puzzle is finished. To play an existing WordSearch puzzle select it from the file list and click **Open**.

The puzzle is displayed on the screen along with the list of words you are to find. At this point you may play the puzzle on the screen or you may print it and its solution (see *Printing a Puzzle* further on in this document).

You may want to change the puzzle in some way. All changes are made in layout mode. Choose **Layout**

Mode from the **WordSearch** menu. If the menu bar is not visible, hold down the command key and press the space bar. This key sequence toggles the menu bar in and out of view. The keyboard shortcuts for Open, New, Copy, etc. work as expected whether the menu bar is displayed or not.

When all changes have been made, leave layout mode by selecting **Layout Mode** from the **Layout** menu. It is at this time that changes to the puzzle are saved. You are asked to confirm that you want to save the new layout of the puzzle. If you decline to save the layout, the changes made are temporary and will only be in effect until you close the puzzle.

To solve the puzzle, locate a hidden word in the letter grid — it may be spelled up, down, left, right or diagonally, depending on how many directions you allow (see **Word Directions** further on in this document). Once you have located a word, use the mouse to select it: place the mouse pointer on either end of the word, hold the mouse button down and drag the pointer to the

| | | | | | | | | | | | | | | | | | | | | | |
|---|---|---|---|---|---|---|---|---|---|---|---|---|---|---|---|---|---|---|---|---|---|
| B | N | K | L | C | U | G | A | Z | Z | X | D | E | D | E | R | G | M | A | S | P | |
| T | R | L | Z | X | K | P | Q | S | O | A | P | H | W | S | H | S | L | N | T | K | |
| U | B | C | E | L | V | M | Y | L | L | R | M | O | K | T | B | H | C | T | U | W | H |
| E | S | A | E | S | P | X | E | Y | T | Q | E | R | O | H | S | U | D | H | | | |
| L | X | S | | | | B | H | D | L | U | B | A | F | I | S | H | B | A | F | | |
| A | R | O | | | | | | | | | | | | | | | | | | | |
| A | Y | S | A | A | | | | | | | | | | | | | | | | | |
| W | S | I | B | I | R | O | | | | | | | | | | | | | | | |
| V | D | S | O | C | G | E | | | | | | | | | | | | | | | |
| O | B | N | C | A | Q | F | | | | | | | | | | | | | | | |

| | |
|----------|----------|
| SHELL | SHARK |
| SEAHORSE | ✓DIVER |
| ✓FISH | ✓MERMAID |
| ✓OCTOPUS | ✓DOLPHIN |
| SHORE | SEALION |
| ✓SAND | |

other end of the word and release the mouse button. If the word you select in this manner is indeed one of the words in the list, it remains circled and a check mark appears next to it in the word list.

When you have found all of the words in the list, a sound will be played if one has been attached to the puzzle (see *Adding Sound* further on in this document). The circles around the words will flash until you click the mouse to go on to something else. When you click the mouse the puzzle is disposed of, and the initial four choices, New, Open, Help and Quit, are presented again.

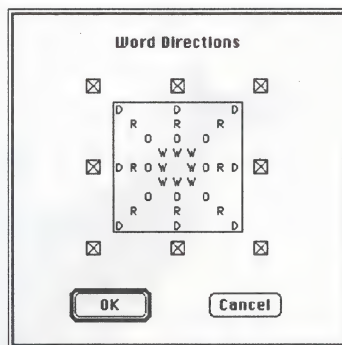
Now you know how to open and solve an existing puzzle. To learn about making a new puzzle, see the section *Creating a New Puzzle* in this booklet.

WordSearch Deluxe will run with Monochrome and 16-bit monitors, but not with "Millions" of colors (32 bit color).

Word Directions

WordSearch lets you control how many directions will be used when the words are hidden. There are eight possible directions. Generally, the more of them you include, the more challenging the puzzles will be.

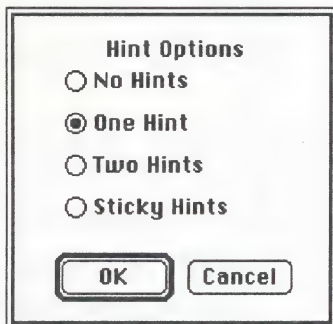
To make your preference known to WordSearch, choose **Word Directions** from the **WordSearch** menu. You must be in Layout Mode in order to make this selection. The above dialog will appear. Check the directions you want to use by clicking inside the boxes.



Hints

WordSearch can give you some help if you get stuck. To specify what kind of hints you want, choose **Hint Options** from the **WordSearch** menu. You must be in Layout Mode in order to select Hint Options.

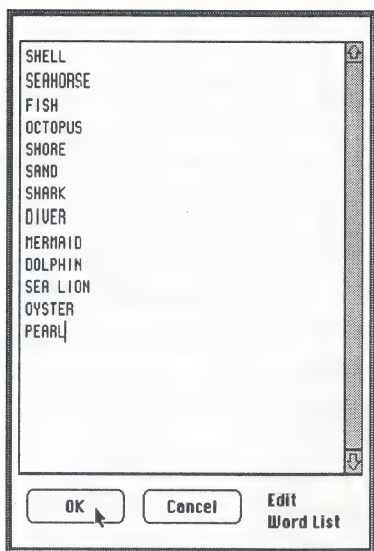
When **No Hints** is selected, WordSearch will not give you any hints. If **One Hint** is specified, when you hold down a key corresponding to a letter of the alphabet, WordSearch will show you the locations of all such characters. For example, if you press the 'A' key, all of the A's in the puzzle will be highlighted. If **Two Hints** is chosen, then you can hold down two keys to find the locations of any two letters. **Sticky Hints** allows you to type any number of letters, and as you do they will be highlighted on the puzzle and will stay highlighted for the duration of play.



Creating a New Puzzle

Clicking the **New** button produces the standard Macintosh save dialog in which you specify a name and a location for the new puzzle. When you click **Save**, you are presented with a window in which to type the list of words you want hidden in your puzzle. The puzzle is saved when it is created, and again (if desired) whenever you exit the layout mode.

Type in each word followed by a <Return> until all the words in your list have been entered. Click **OK**, voila! The puzzle grid and the word list are displayed. At this point you can solve the puzzle, print it or you



can work with the layout options to change the puzzle's appearance. You can also include a *sound* to be played when the puzzle is solved (see **Adding Sound** further on in this document). You can choose upper or lower case from the "layout" mode. This option changes both the word list and puzzle display.

It is possible that the words you typed in will not all fit in the puzzle box using the current settings for box size and puzzle font. If so, WordSearch will alert you to the situation. You can use the layout features described later to make appropriate changes.

Editing a Word List

After a puzzle has been created, its word list can be modified at any time by entering layout mode and selecting **Edit Word List** from the **WordSearch** menu. The list is presented in a scrolling text window. You can add new words, delete words and correct spelling. Up to 100 words may be used in a puzzle. When finished, click **OK**. The puzzle is displayed again with the new list. To play or print the puzzle you must leave layout mode. If you change the layout of a puzzle after having partially solved it, the puzzle restarts from scratch when you leave layout mode.

Printing a Puzzle

To print a puzzle and its solution, open the puzzle in WordSearch and select **Print Puzzle** from the **File** menu. To print the puzzle solution select **Print Solution** from the **File** menu. Note: Since the puzzle is completely rebuilt when certain layout elements are changed, be sure to print a solution for a puzzle before making any layout changes to a printed puzzle (if the solution is desired). The name of the file appears centered at the top of the page when printing directly from WordSearch Deluxe.

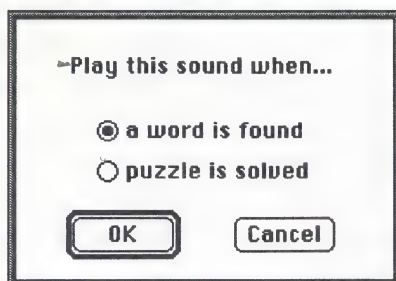
Alternatively, you can print from the Finder, without explicitly opening WordSearch. Select the WordSearch puzzle file(s) you want and then select **Print** from the Finder's **File** menu. This second method will present two print job dialogs for every puzzle selected: the first of the two is for the puzzle, the second one is for the solution. When printing from the Finder, if you do not want the solutions printed, simply cancel the second print job dialog.

With most high resolution printers (*LaserWriter*, *StyleWriter*, etc.) it is possible to print puzzles which are larger than the on-screen work area by creating a puzzle with a small font and printing an enlarged copy. The degree of enlargement is controlled in Page Setup.

Adding Sound

If you are familiar with any program which allows you to create and edit sounds, you can easily add any sound you like to a WordSearch puzzle. If you use a *Macintosh LC* or a *IIx* you can use the built-in sound recorder in the control panel to create your own sounds. The sound is played either when a word is found or when the entire puzzle is solved, depending on how you

assign it. You can paste two different sounds into your puzzle; one to be played when a word is found and another to be played when the puzzle is solved.



Once you have found a sound you want to use as fanfare, simply **Copy** it from within a program having that capability. (One such program is *SoundEdit*[™] from Farallon Computing, Inc.) Then go into WordSearch Deluxe, open a puzzle, and enter layout mode by selecting **Layout Mode** from the **WordSearch** menu. Next, select **Paste Sound** from the **WordSearch** menu. The sound will play with dialog to follow.

Finally, leave layout mode by once again selecting **Layout Mode** from the **WordSearch** menu. When asked if you wish to save the layout, say yes. The sound will then be heard upon the event to which it was assigned.

As a quick demonstration of this feature you can open the control panel and go to the sound controls. Highlight one of the "system beep" sounds such as "Boing" or "Monkey" and select **Copy** from the **Edit** menu. Then go to WordSearch Deluxe, open a puzzle and paste the sound as described above. You will hear the chosen sound when a word is found or the puzzle is solved.

Colorizing and Adding Graphics

You can add color to your WordSearch puzzle if you have a color paint program. In your color paint program, you can create a field of background color the same size as the WordSearch window and copy it to the clipboard

WordSearch allows you to add graphics to your puzzle. Cut and paste a graphic from a clip art collection or draw your own with a paint or draw program. Any PICT graphic can be copied to the Macintosh clipboard and subsequently pasted onto your puzzle and positioned to your liking.

To get a graphic onto the Macintosh clipboard, open an application which allows you to view and edit a picture. *MacDraw* and *Hypercard* are two such programs. There are many others.

Select the graphic you wish to include in your puzzle. Generally, this is done by enclosing a portion of the picture within a selection rectangle and choosing **Copy** from the **Edit** menu. After selecting the desired graphic, **Quit** the drawing application.

| Word Search | |
|---|----|
| <input checked="" type="checkbox"/> Layout Mode | |
| Edit Word List | ⌘T |
| List Display | |
| Word Directions | |
| Hint Options | |
| Puzzle Font | ⌘Y |
| List Font | ⌘L |
| Lower Case | |
| Paste Picture | |
| Paste Sound | |
| Copy Puzzle Pict | |
| Copy Key Pict | |
| Copy List Pict | |
| Copy Frame Pict | |

Start WordSearch and select **Layout Mode** from the **WordSearch** menu. Select **Paste** from the **Edit** menu. You will notice the appearance of a rectangle containing the graphic you previously copied. You may now drag the graphic to the desired position. You may leave Layout Mode by selecting the Layout Mode item again or you may continue to make other changes.

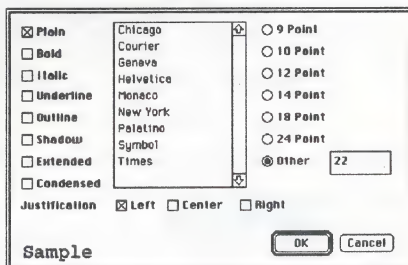
When creating graphics for your WordSearch puzzle you may wish

you had a size guide to go by so that the dimensions of your design are consistent with the size of the window. No problem. Start by opening WordSearch Deluxe, choose to do a new puzzle and select **Copy Frame Pict** from the **WordSearch** menu (not in Layout Mode). This puts a copy of the WordSearch window rectangle on the Macintosh clipboard, which can then be pasted into your draw or paint program to serve as a boundary on your design.

Changing Fonts

At some time you will probably want to use a different font (type style) or size to add pizzazz to a puzzle or to fit more letters into a smaller area.

Change the fonts on either the puzzle or the word list. Enter the Layout Mode (Choose **Layout Mode** from the **WordSearch** menu). Select **Puzzle Font** or **List Font** from the **WordSearch** menu. Both choices present this font selection dialog box:



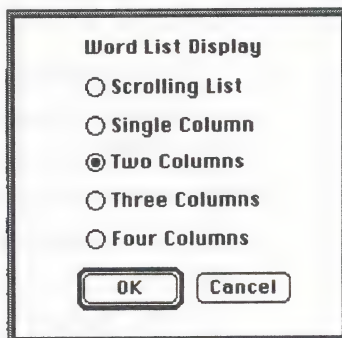
As you make changes to the settings, the effect of those changes are reflected in the sample in the lower left hand corner of the dialog box. Simply choose the font, size and style you like, and click **OK**.

Changing the Layout

Both the word list and the puzzle box can be resized and moved about on the screen. This allows you to create puzzles of various sizes and to make room for graphics. Changes must be made while in Layout Mode.

To change the position of either rectangle, use the mouse and drag from the center of the rectangle. Resize by dragging the lower right corner of either rectangle. It is possible to set the size of the puzzle so small that not all the words in the list can be hidden. For smaller puzzles you may want to use a smaller type size (see *Changing Fonts*). The word list will only display those words which were successfully stashed. Each time you alter the size or position of the puzzle, it is completely reshuffled and redrawn with the words in new positions. The word list is updated to show which words are hidden within the current dimensions of the puzzle.

WordSearch Deluxe gives you choices about how the word list is presented on the screen. You can select a one-, two-, three- or four-column stationary list. Or you can choose a single-column scrolling window. Make your choice by entering Layout Mode and selecting **Word List Display** from the **WordSearch** menu.



Importing a Word List

A list of words created in any word processing program can be transferred to WordSearch Deluxe to make a puzzle. This is accomplished by using the word processor to open the document containing the list of words. Once open, select the words to be imported to WordSearch, and choose **Copy** from the **Edit** menu. Then quit the word processing application.

Immediately open WordSearch Deluxe and choose to create a new puzzle. When the window appears for you to type in your words, select **Paste** from the **Edit** menu.

Exporting a Puzzle

Once you have created your WordSearch puzzle you may want to send it to a word processor or page layout program to include it in a newsletter, for example. Or you might want to further enhance its appearance using the more sophisticated design tools of a graphics application.

WordSearch Deluxe will copy the puzzle, the key or the list onto the Macintosh clipboard as a PICT graphic to be pasted into a document created by another program.

Keyboard Short Cuts

The following shortcuts use the Control Key (⌘) and the corresponding letter for quick access:

File Menu

- ⌘ N – New...create a new puzzle
- ⌘ O – Open...an existing puzzle
- ⌘ W – Close...currently displayed puzzle
- ⌘ P – Print Puzzle
- ⌘ Q – Quit

Edit Menu

- ⌘ X – Cut...selected text
- ⌘ C – Copy...selected text
- ⌘ V – Paste...text from clipboard to word list

WordSearch Menu

- ⌘ T – Edit Word List
- ⌘ Y – Puzzle Font...change the puzzle font
- ⌘ L – List Font...change the font list

Menu Item Summary

File Menu:

| | |
|----------------|--|
| New | Create a new WordSearch puzzle. |
| Open | Open an existing WordSearch puzzle. |
| Close | Stop playing the current puzzle. |
| Page Setup | Specify basic printing options. |
| Print Puzzle | Send the current puzzle to the printer. |
| Print Solution | Send the puzzle's solution to the printer. |
| Quit | Exit the WordSearch program. |

Layout Menu:

| | |
|------------------|--|
| Layout Mode | Toggles the following layout functions on and off. |
| Edit Word List | Make changes to the puzzle's word list. |
| List Display | Choose a display format for the word list. |
| Word Directions | Choose the directions used in hiding the words in the puzzle. |
| Hint Options | Choose the kind of hints to be supplied upon request. |
| Puzzle Font | Choose the font used in the puzzle. |
| List font | Choose the font used in the list. |
| Paste Picture | Transfer a copy of a picture from the clipboard to the puzzle window. |
| Paste Sound | Transfer a sound from the clipboard to a puzzle. |
| Copy Puzzle Pict | Put a copy of the current puzzle on the clipboard as a PICT. |
| Copy Key Pict | Put a copy of the current puzzle's solution on the clipboard as a PICT. |
| Copy List Pict | Put a copy of the word list on the clipboard as a PICT. |
| Copy Frame Pict | Put a copy of the game window's rectangle on the clipboard. Use this feature to put a frame of reference into a paint program when designing graphics to go with a puzzle. Make your graphics easily fit the window. |

Macintosh™ is a trademark licensed to Apple Computer, Inc. Apple is a trademark of Apple Computer, Inc. MacKids is a trademark of Nordic Software, Inc.

Warranty and Disclaimer

Nordic Software warrants the disk to be free of defects for ninety (90) days from the purchase date. If the disk is found to be defective in this ninety (90) day period, return it to Nordic Software for a free replacement. Be sure to make a backup copy of your disk for archival storage.

THE SYSTEM AND FINDER ARE COPYRIGHTED PROGRAMS OF APPLE COMPUTER, INC. LICENSED TO NORDIC SOFTWARE, INC. TO DISTRIBUTE FOR USE ONLY IN COMBINATION WITH BODYWORKS. APPLE COMPUTER MAKES NO WARRANTIES, EITHER EXPRESS OR IMPLIED, REGARDING THE ENCLOSED COMPUTER SOFTWARE PACKAGE, ITS MERCHANTABILITY OR ITS FITNESS FOR ANY PARTICULAR PURPOSE. THE EXCLUSION OF IMPLIED WARRANTIES IS NOT PERMITTED IN SOME STATES. THE ABOVE EXCLUSION MAY APPLY TO YOU. THIS WARRANTY PROVIDES YOU WITH SPECIFIC LEGAL RIGHTS. THERE MAY BE OTHER RIGHTS THAT YOU MAY HAVE WHICH VARY FROM STATE TO STATE.

Copyright 1991 by

Nordic Software, Inc.

P.O. Box 6007

Lincoln, NE 68506-0007

402-488-5086



MackKids Registration

Name: _____

Address: _____

City: _____ State: _____ Zip: _____

Phone: _____

Date purchased: _____ Purchased from: _____

MackKids Title Purchased: _____

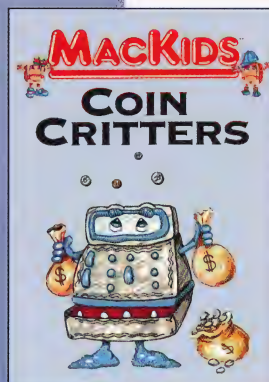
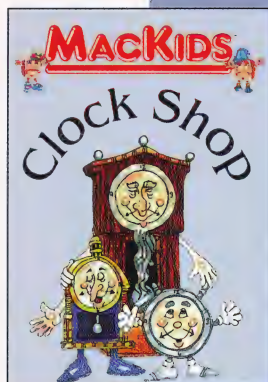
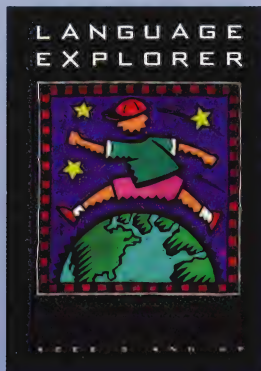
Macintosh hardware owned: _____

Comments: _____

Affix
Postage
Here

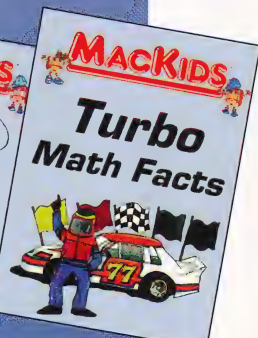
Nordic Software, Inc.
917 Carlos Drive
Lincoln, NE 68505-2059

Educational Software



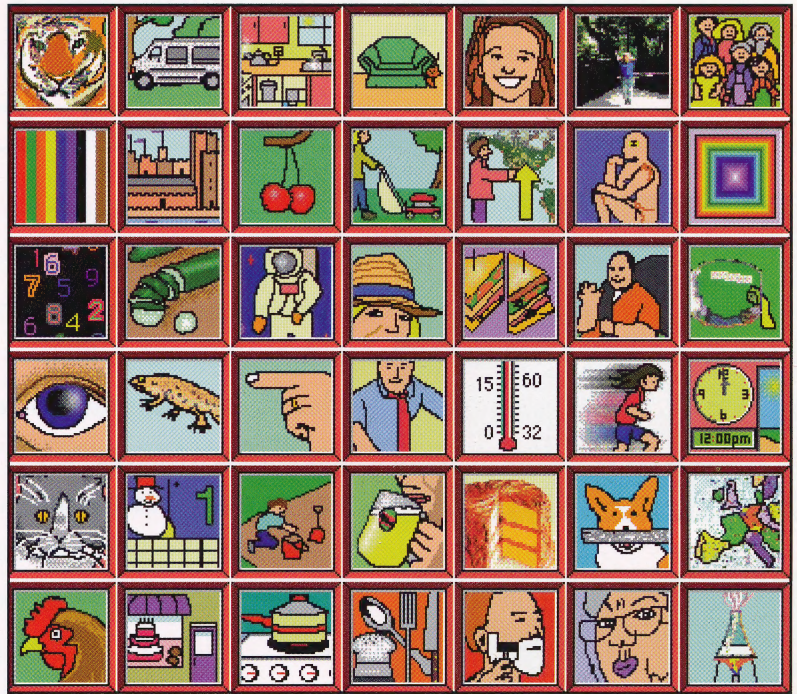
*New
Macintosh
Titles from*

Nordic Software



Animate the Discovery of Language

Choose from 42 Topics to Learn English, French, German and Spanish

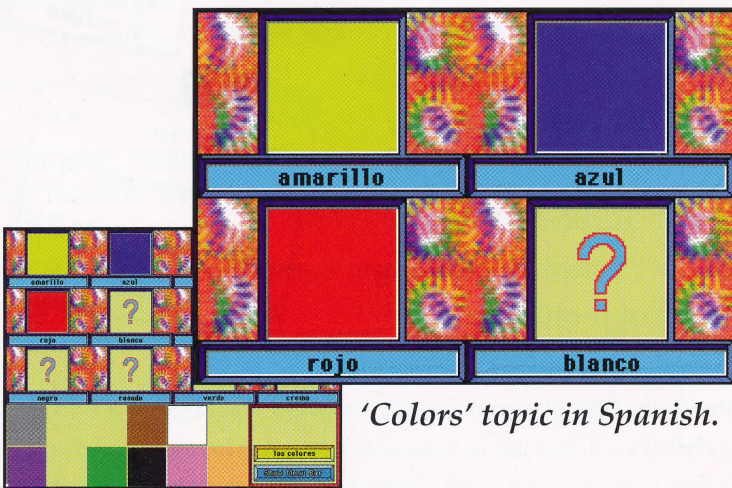


Language Explorer Teaches Four Languages

REQUIREMENTS: COLOR MAC • 1 MB RAM • HARD DRIVE • SYSTEM 6.0.7 (WITH 32-BIT QUICKDRAW) OR LATER

Learn over 500 vocabulary words in English, French, German and Spanish – all in one program! Simply select a topic and a language, then place picture tiles in the correct frames. Five skill levels offer a challenge for any age. Students will learn common, useful words in 42 topics. Each topic consists of 12 words. The CD-ROM version brings each language alive as you hear each word pronounced by a native speaker. You can even choose to hear voices by a female, male or both. Menus and online help display in each language. Language Explorer is especially useful for English as a Second Language students. Grades K to 12. CD-ROM version requires a CD-ROM drive.

| Language | Mode |
|--------------|------|
| English | ⌘1 |
| ✓ French | ⌘2 |
| German | ⌘3 |
| Spanish | ⌘4 |
| | ⌘B |
| Beginner | ⌘I |
| Intermediate | ⌘A |
| ✓ Advanced | ⌘L |
| Linguist | ⌘P |
| Polyglot | |



'Colors' topic in Spanish.

CD-ROM Includes Spoken Words



'Wild Animals' topic in French.

Math Solutions for Grades K

REQUIREMENTS: MAC PLUS OR GREATER • 1 MB RAM • HARD DRIVE • SYSTEM 6.0.7 OR LATER



Count Coins with Coin Critters™



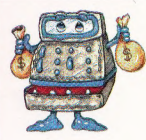
Build early math skills with colorful animation and fun sounds. Student lessons include identifying U.S. coins, purchasing and counting back change, among others. *Problems are spoken* clearly by a human voice. Correct answers earn tokens to play a fun, rewarding game. The student's player file saves lessons and game tokens, ready for the next Coin Critters session.

Print work sheets and player progress reports for each student.

Onscreen help displays coin values and equivalents. The school version includes an illustrated *teacher's manual*.

- ### 5 Coins
- Pennies
 - Nickels
 - Dimes
 - Quarters
 - Half Dollars

- ### 9 Lessons
- Click heads up coins
 - Click tails up coins
 - Select amount to match coins
 - Select coins to match amount
 - Do you have enough money?
 - Coin equivalents
 - Which is more?
 - Purchase Items
 - Make Change



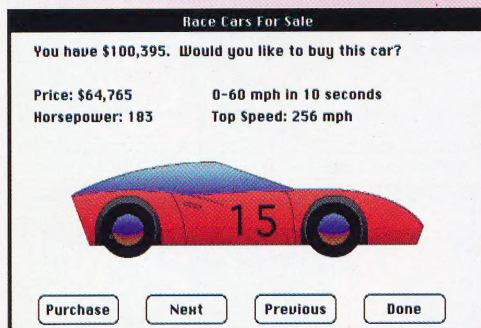
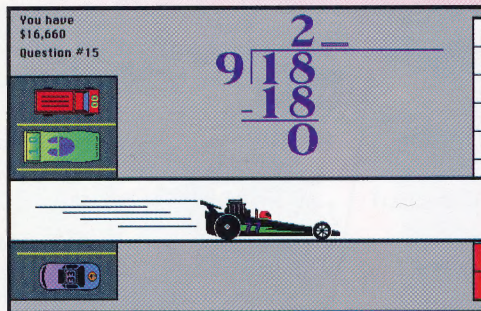
“Progress
Sam

Progress for

Click heads up
Pennies -- Y
Nickels -- Y
Dimes -- Ye
Quarters --
Half Dollars

Make change
Pennies -- Y
Nickels -- Ye
Dimes --
Qu

Rev Up Math with Turbo Math Facts™



Drive excitement into practicing *basic math*. Realistic sound and animation combine to compel students to practice addition, subtraction, multiplication and division. Students earn money for each correct answer, purchase the fastest cars affordable, and gear up for a race against Turbo Tom. The faster cars cost more money, encouraging students to complete more problems. From single digit addition to long division, *five skill levels* let you customize lessons for the individual needs of students. You can set student drills for a single lesson or a combination of lessons. Incorrect answers work through the correct solution onscreen. Turbo Math Facts includes *tutorial features* such as a step-by-step sample of each type of problem.

- ### Skill
- up to 10
 - up to 20
 - ✓ up to 50
 - up to 100
 - up to 1000

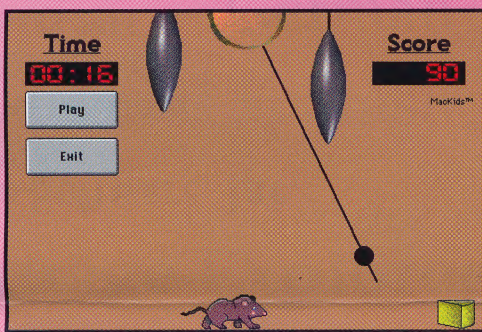
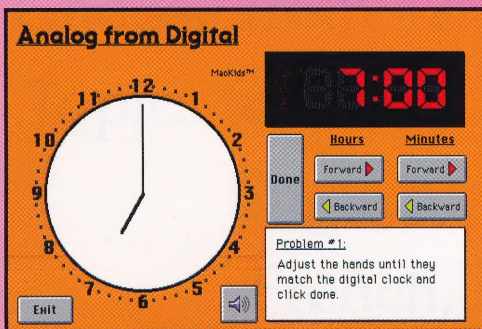
- ### Lessons
- ✓ + Addition % A
 - Subtraction % S
 - ✖ Multiplication % M
 - ✓ ÷ Division % D

Schools Order Direct from Nordic and Save 30%. To qualify for the 30% discount, Nordic Software must receive a written copy of your school purchase order. (Discount doesn't apply to shipping charges.) If you call in your order, you can fax the purchase order. Business hours: 9:00 AM to 5:00 PM CST. Be sure to address or fax your purchase order to Nordic Software for this incredible offer.

Through 6



Clock Shop™ Tells All About Time



Father Time and the helping hands teach students how to read *analog and digital time*. Click and drag the hour and minute hands for a realistic understanding of the clock. A human voice *reads each problem aloud*.

Correct answers earn time for the pendulum game that requires a good sense of timing. *Save student lessons* and game time in the player file. Also *print work sheets* and progress reports for each student. You can even change the lesson length and number of attempts to fit your lesson plan. Clock Shop's school version includes a *teacher's manual*.

6 Intervals

- Hour
- Half Hour
- Quarter Hour
- Ten Minute
- Five Minute
- One Minute

8 Lessons

- Set Digital from Analog
- Set Analog from Digital
- Set Digital from Words
- Set Analog from Words
- Digital Clock Problems
- Analog Clock Problems
- Count by Fives
- Quarter Hour Terms

Report™
ole

anne Mack

coins

S

es
No

S



Also Available:

WordSearch Deluxe™

Solve and create hidden word puzzles.

Grades K to 12.

Jungle Quest™

Conquer basic math in an exciting adventure.

Grades K to 6.

Kolor Klips™

Over 60 drawings of original clip art.

Grades K to 12.

Single Copy: 1 program copy, 1 user's manual.

School Version: 2 program copies, 1 user's manual and 1 *teacher's manual.

Lab Pack: 5 program copies, 1 user's manual and 1 teacher's manual.

Site License: 3 program copies, 3 user's manuals and 1 *teacher's manual.

*Teacher's manuals are available for Clock Shop and Coin Critters only. Additional teacher's manuals can be purchased direct from Nordic for \$20.00 each.

SCHOOL PRICE LIST

NORDIC SOFTWARE • P.O. Box 6007 • LINCOLN, NE 68506-0007 • 402-488-5086

| TITLE | SINGLE | LAB | SITE |
|---|---------|----------|----------|
| NEW Language Explorer | \$57.95 | \$231.80 | \$695.40 |
| NEW Language Explorer CD-ROM | \$77.95 | \$311.80 | NA |
| NEW **Coin Critters (School Version Available) | \$57.95 | \$231.80 | \$695.40 |
| NEW **Clock Shop (School Version Available) | \$57.95 | \$231.80 | \$695.40 |
| Turbo Math Facts | \$49.95 | \$199.80 | \$599.40 |
| WordSearch Deluxe | \$69.95 | \$279.80 | \$839.40 |
| Jungle Quest | \$59.95 | \$239.80 | \$719.40 |
| Kolor Klips | \$74.95 | NA | NA |

School Version. Coin Critters and Clock Shop School Versions include two copies of the program, one user's manual and one teacher's manual. **SCHOOL VERSION \$77.95

Shipping & Handling. Shipping within the continental U.S. is \$5.00 per order. Call for more information about shipments to other destinations.

PHONE **402-488-5086** FAX **402-488-2914**

Nordic Software • P.O. Box 6007 • Lincoln, NE 68506-0007

Offer ends September 1, 1994.

Nordic Software, Inc.

P.O. Box 6007

Lincoln, NE 68506-0007

Phone: 402-488-5086

Fax: 402-488-2914

Bulk Rate
US Postage
PAID
Permit No. 1111
Lincoln, NE



New Educational Titles for the Macintosh.