

# SHANGHAI

DRAGON'S EYE

上海

Macintosh

Supports Black & White and  
Color Monitors.

System 7 Compatible

ACTIVISION



# SURRENDER TO A 3000-YEAR-OLD OBSESSION

The most captivating strategy game of all time just got better.

Introducing *Shanghai II: Dragon's Eye*. Based, like the original *Shanghai*, on the ancient fascination of Mah-Jongg. And now with more of everything that made the original a computer game classic.

Several ways to play—Solitaire, Challenge, and Tournament—all so deceptively simple. The object: snap off matching pairs till you run out of tiles, run out of moves, or run out of time.

Simple? Sure—and simply addicting.

And at the heart of *Shanghai II*, you'll find Dragon's Eye. It's the ultimate challenge, even for the most cunning and seasoned *Shanghai* player.

*Shanghai II* features 3 modes of play for 1 or 2 players . . . 8 beautifully detailed tile sets . . . over a dozen layouts based on the Chinese zodiac . . . and a Layout Construction Set, for devising an endless variety of original formations.

*Shanghai II: Dragon's Eye*. It will beguile your days and nights. Demand your concentration. Become your obsession.

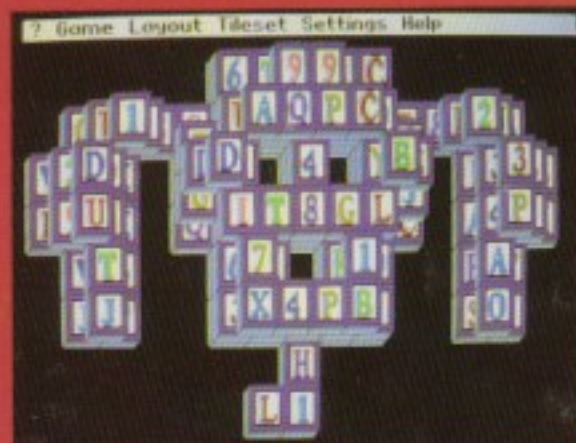
Surrender.

ACTIVISION



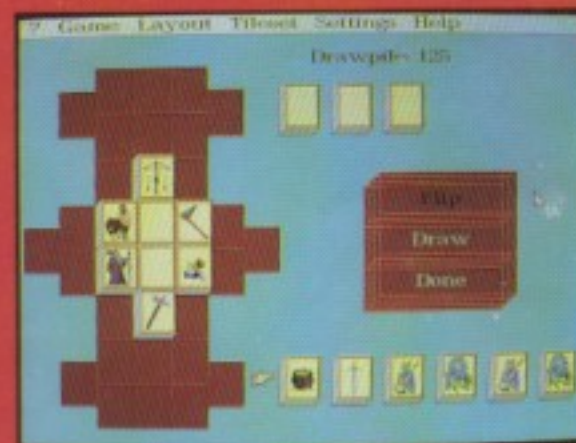
VGA

8 tile sets with colorful themes, from Mah-Jongg to Playing Cards, Flags of the World, Sports, Fantasy, and more. 640 x 480 Hi-Res 16-color VGA graphics render them all in gorgeous detail (also supports 320 x 200 256-color MCGA).



MCGA

12 challenging tile formations, plus the classic *Shanghai Dragon*. Or create your own formations with the Layout Construction Set. Animations and sound effects bring the tiles to life.



VGA

Dragon's Eye, a special challenge for superior *Shanghai* players. It's move against move, as one player seeks to complete the Dragon formation, the other to dismantle it. Go up against a friend or the computer.





# SHANGHAI

## DRAGON'S EYE

ACTIVISION

Macintosh

Macintosh Plus, SE,

II, LC, and SI, Computers

# SHANGHAI

DRAGON'S EYE

ACTIVISION

.. ID-230 00



©1991 Activision. Shanghai II:  
Dragon's Eye is a trademark of  
Activision. Actual screen images  
from IBM version. Other versions  
may vary. Macintosh® is a Reg.  
trademark of Apple™ Computers,  
Inc. IBM® is a Reg. trademark of  
International Business Machines.

# SHANGHAI

## DRAGON'S EYE



# SHANGHAI II:

## Dragon's Eye

Disk One

Program Disk

For Macintosh™ Computers

©1991 Activision. All rights reserved.

# SHANGHAI II:

## Dragon's Eye

Disk Two

Tiles Disk

For Macintosh™ Computers

©1991 Activision. All rights reserved.

# SHANGHAI II:

## Dragon's Eye

Disk Three

Art Disk

For Macintosh™ Computers

©1991 Activision. All rights reserved.

# SHANGHAI II:

## Dragon's Eye

Disk Four

Sound & Music Disk

For Macintosh™ Computers

©1991 Activision. All rights reserved.