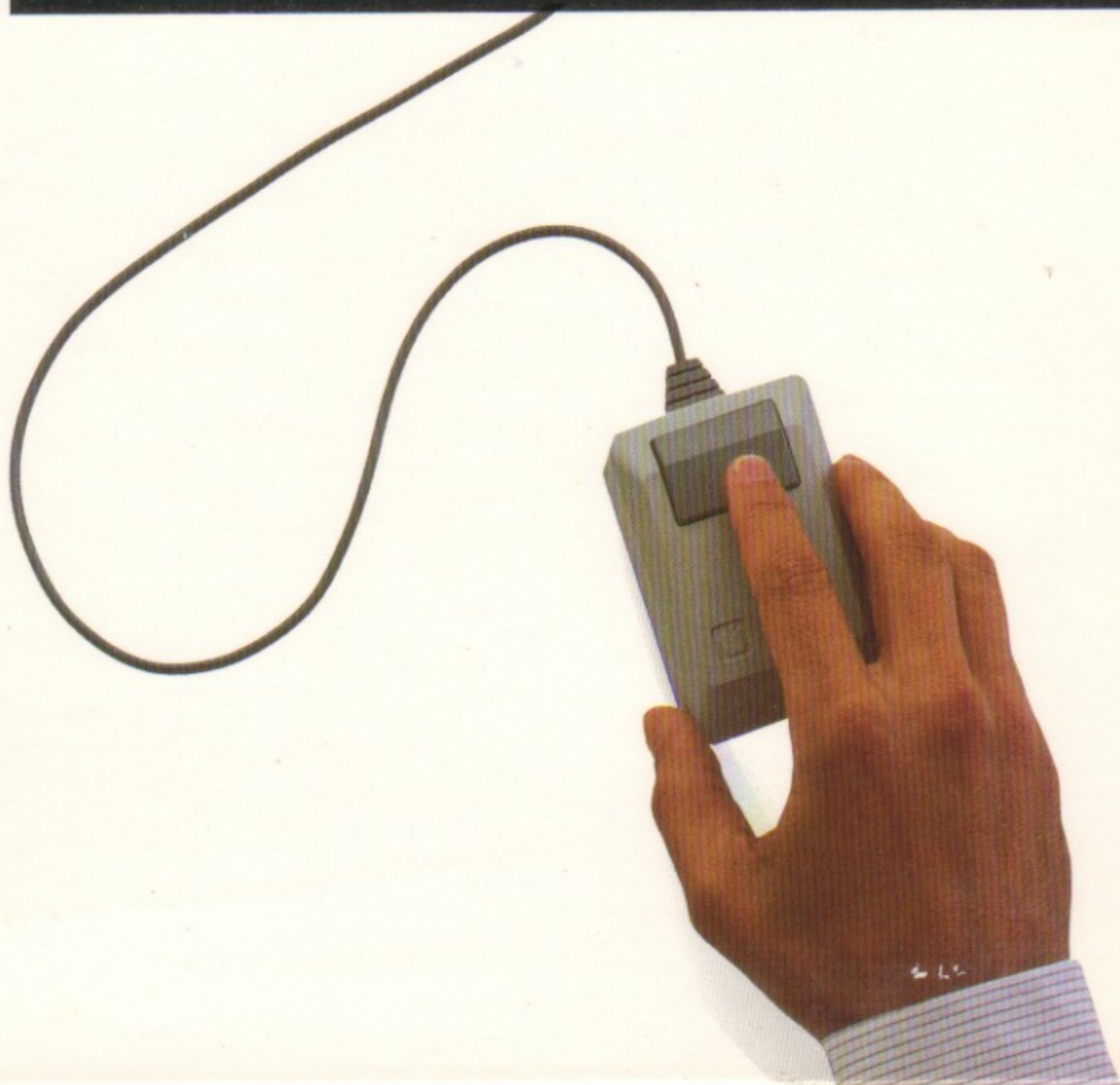
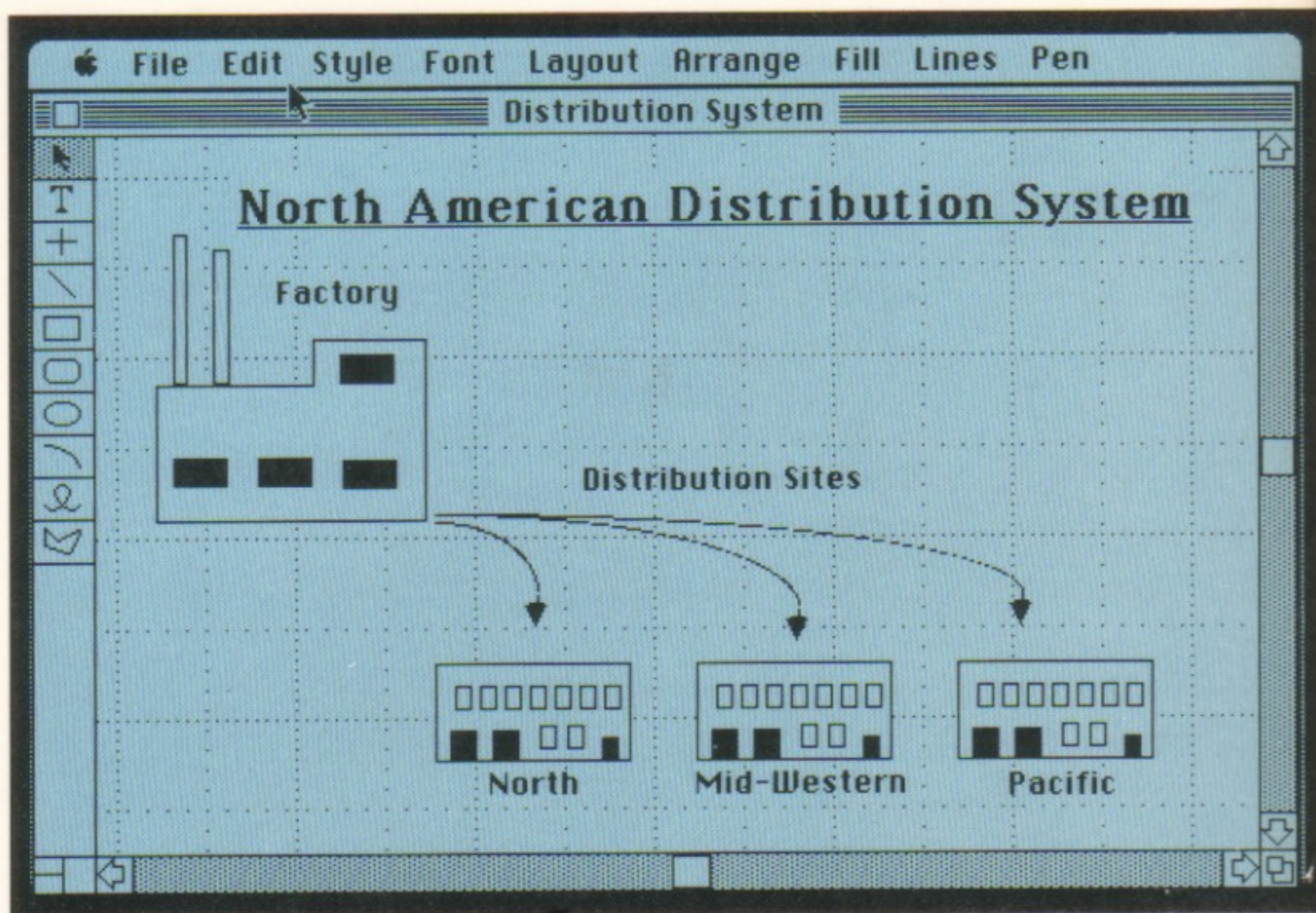
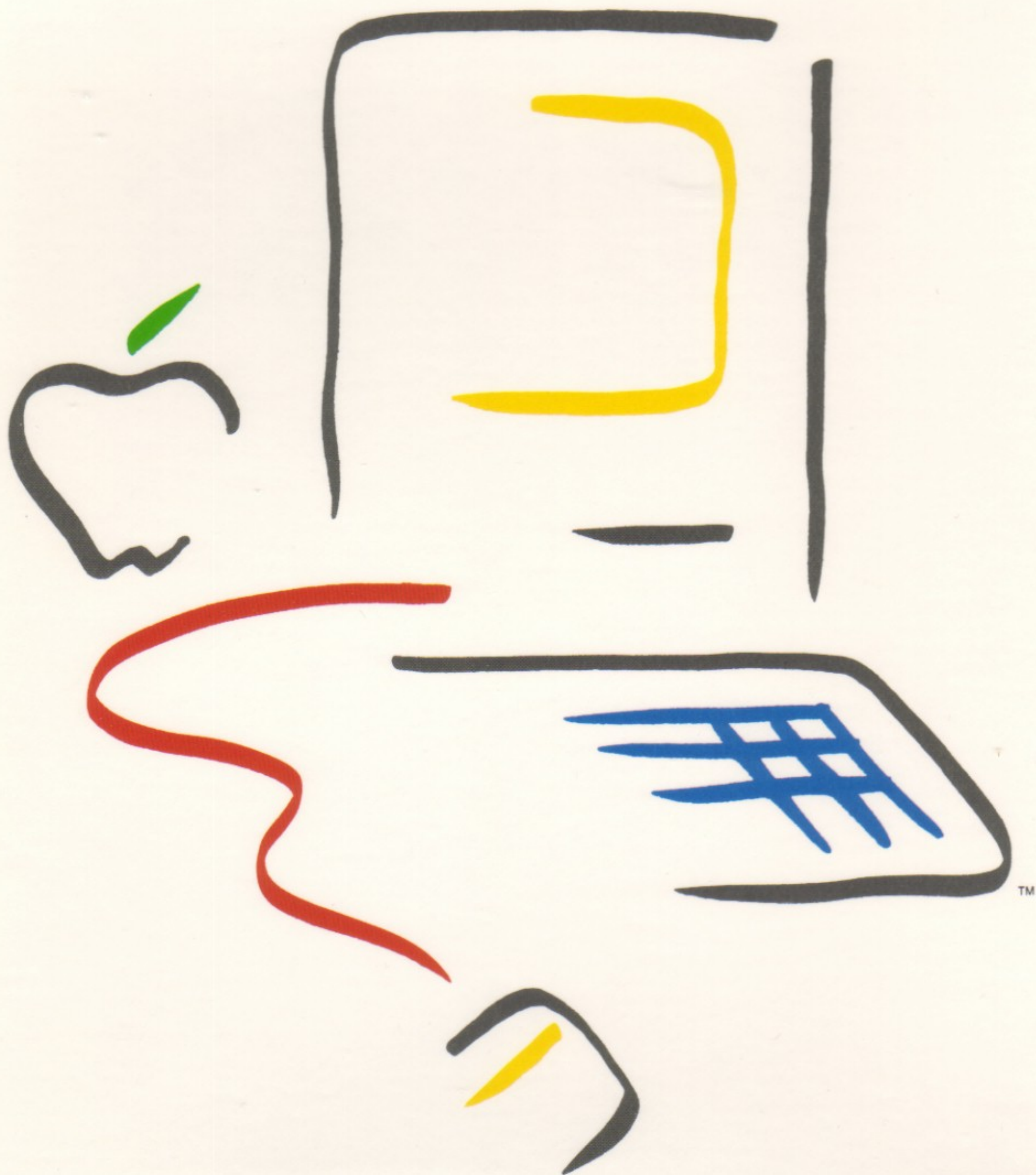




MacDraw



Macintosh™



Macintosh[™]

MacDraw

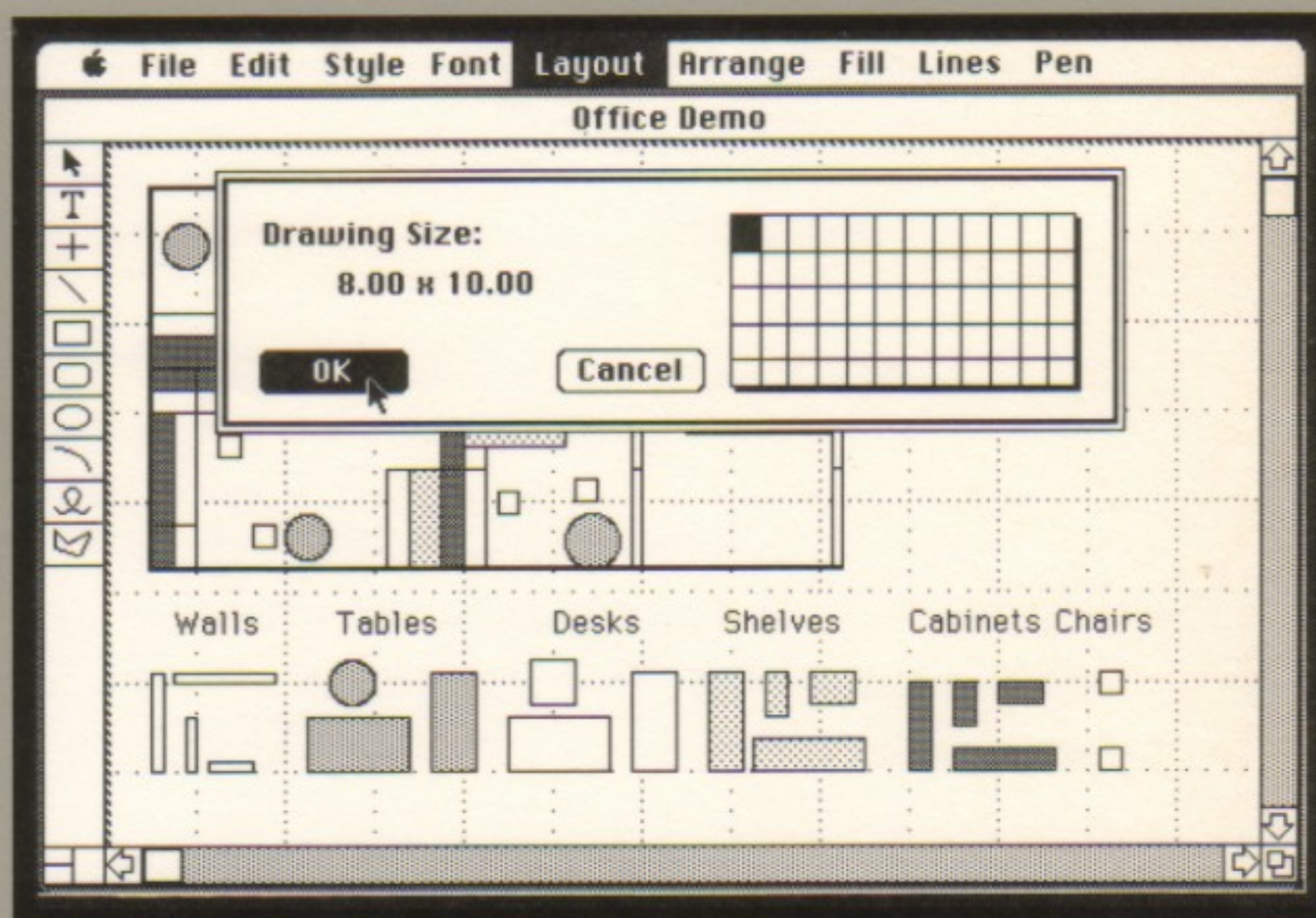
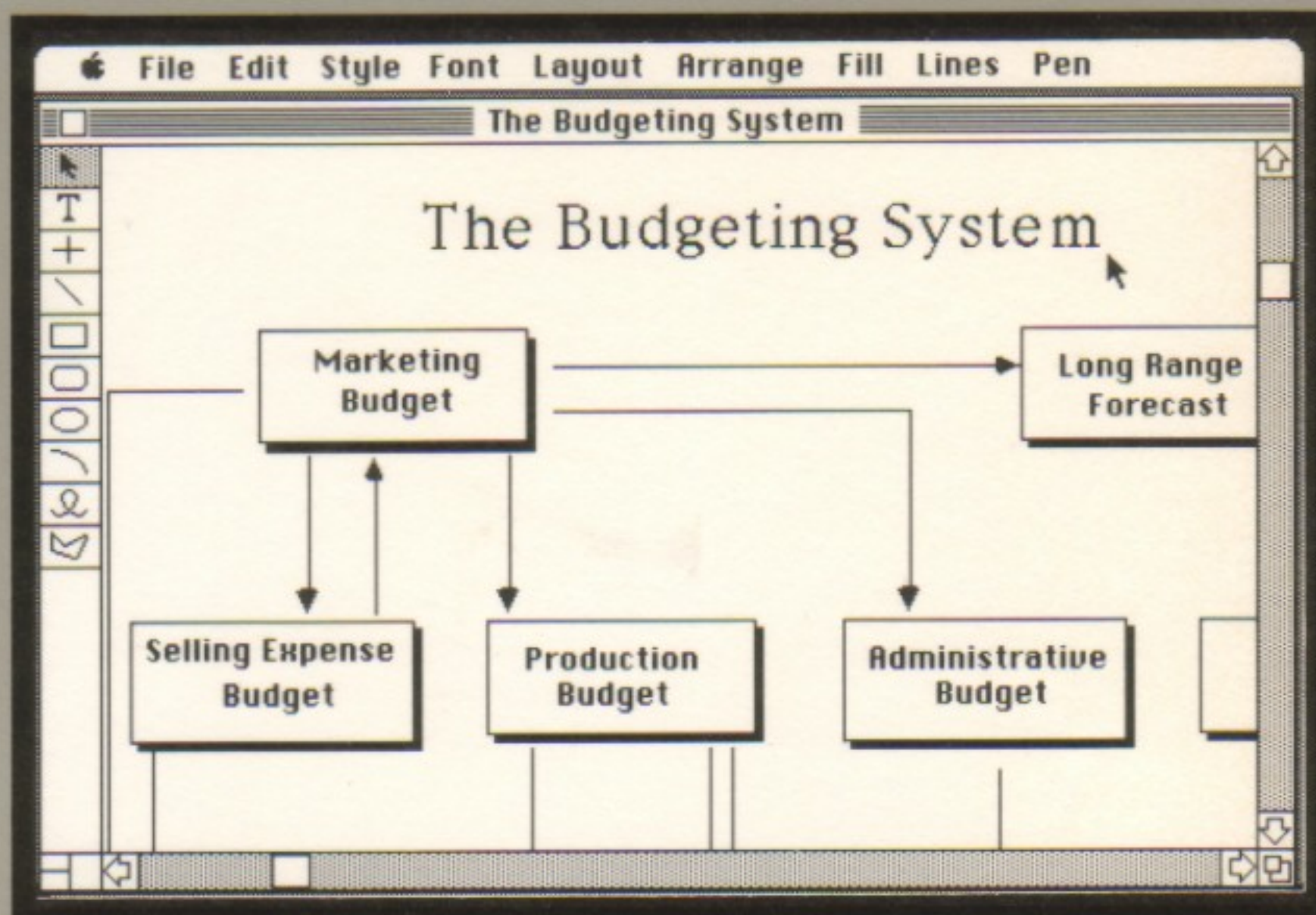


M 0 5 2 6

MacDraw

MacDraw™ enables you to create custom-designed graphics on your Macintosh™ personal computer. Use it to prepare everything from forms to technical illustrations. MacDraw gives you these advantages:

- **Simplifies creating illustrations.** Using just the mouse, you can draw straight lines and arcs. Rectangles, squares, and circles. Even freehand sketches. Then add text in a variety of type styles and sizes.
- **Enables you to design extremely detailed graphics.** MacDraw's tools and commands permit you to create precisely the illustrations you need. There's a palette of lines and shapes. Patterns for filling shapes. Standard and custom rulers for exact measurements. A grid for aligning objects. And commands such as Rotate.
- **Lets you modify any part of a drawing.** With MacDraw, it's easy to change or enhance a drawing at any time. A click of the mouse adds and deletes shapes. Duplicates, moves, reshapes, and resizes any shape. Even combines shapes.
- **Provides a versatile graphics tool.** You can move graphics between documents. And between applications. For example, use MacDraw to embellish a Microsoft® Chart graph. Or move an illustration from MacDraw into MacWrite™ to clarify a complex report.
- **Increases the effectiveness of your communications.** Using the Apple® Imagewriter printer, you can print anything from a one-page scale drawing to a multipage floorplan as large as 8 feet by 10 feet. Graphics are printed just as they appear on the screen—in incredible detail.



MacDraw™



400K (Single-Sided)

MacDraw™



800K (Double-Sided)

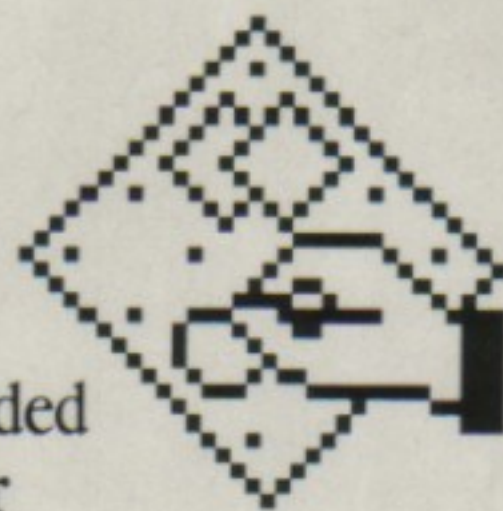
MacDraw™



A
Guided
Tour

For use only on:
• Macintosh 128K
• Macintosh 512K

MacDraw™



A
Guided
Tour

For use only on:
• Macintosh 512K
Enhanced
• Macintosh Plus

Apple and the Apple logo are registered trademarks of Apple Computer, Inc. MacDraw is a trademark of Apple Computer, Inc. Macintosh is a trademark of McIntosh Laboratory, Inc. and is being used with express permission of its owner. ©1985, 1986 Apple Computer, Inc.

690-5014-C

Apple and the Apple logo are registered trademarks of Apple Computer, Inc. MacDraw is a trademark of Apple Computer, Inc. Macintosh is a trademark of McIntosh Laboratory, Inc. and is being used with express permission of its owner. ©1985, 1986 Apple Computer, Inc.

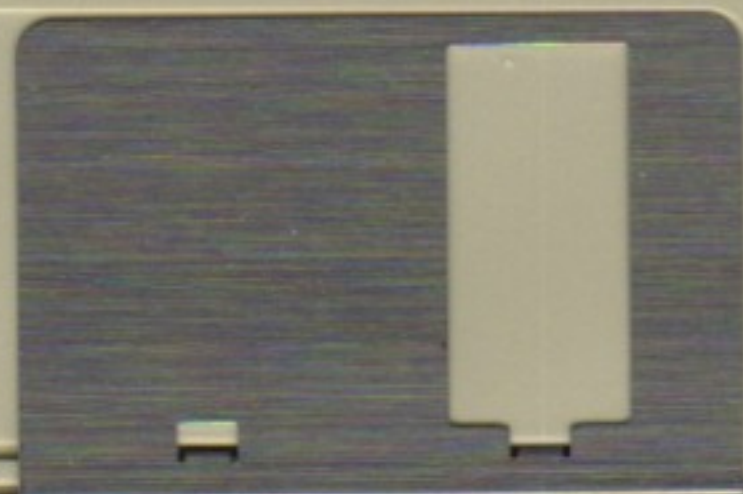
690-6002-A

MADE IN JAPAN

03J146614

MADE IN JAPAN

02F1616680



Apple and the Apple logo are registered trademarks of Apple Computer, Inc. MacDraw is a trademark of Apple Computer, Inc. Macintosh is a trademark of McIntosh Laboratory, Inc. and is being used with express permission of its owner. ©1985, 1986 Apple Computer, Inc.

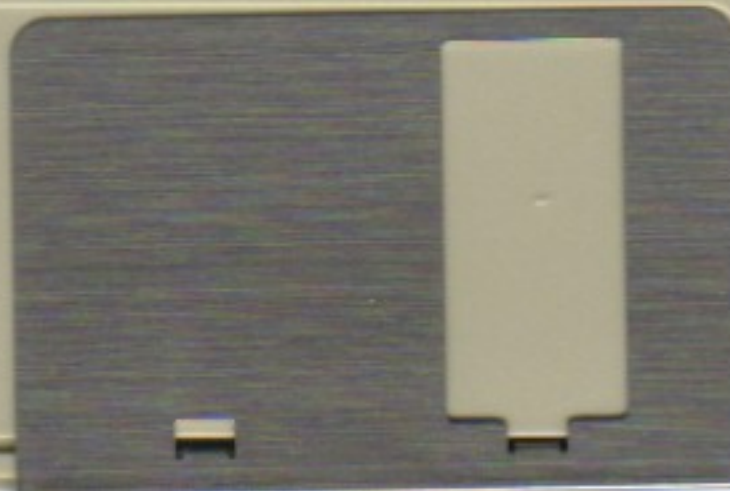
690-5016-A

Apple and the Apple logo are registered trademarks of Apple Computer, Inc. MacDraw is a trademark of Apple Computer, Inc. Macintosh is a trademark of McIntosh Laboratory, Inc. and is being used with express permission of its owner. ©1985, 1986 Apple Computer, Inc.

690-6003-A

MADE IN JAPAN

MADE IN JAPAN





MacintoshTM



A Guided Tour of MacDraw



Written and Produced by Kathie Blair
685-0009-A

A Guided Tour of MacDraw

SIDE 1



Written and Produced by Kathie Blair
027-0017-A Copyright © Apple Computer, Inc. 1984