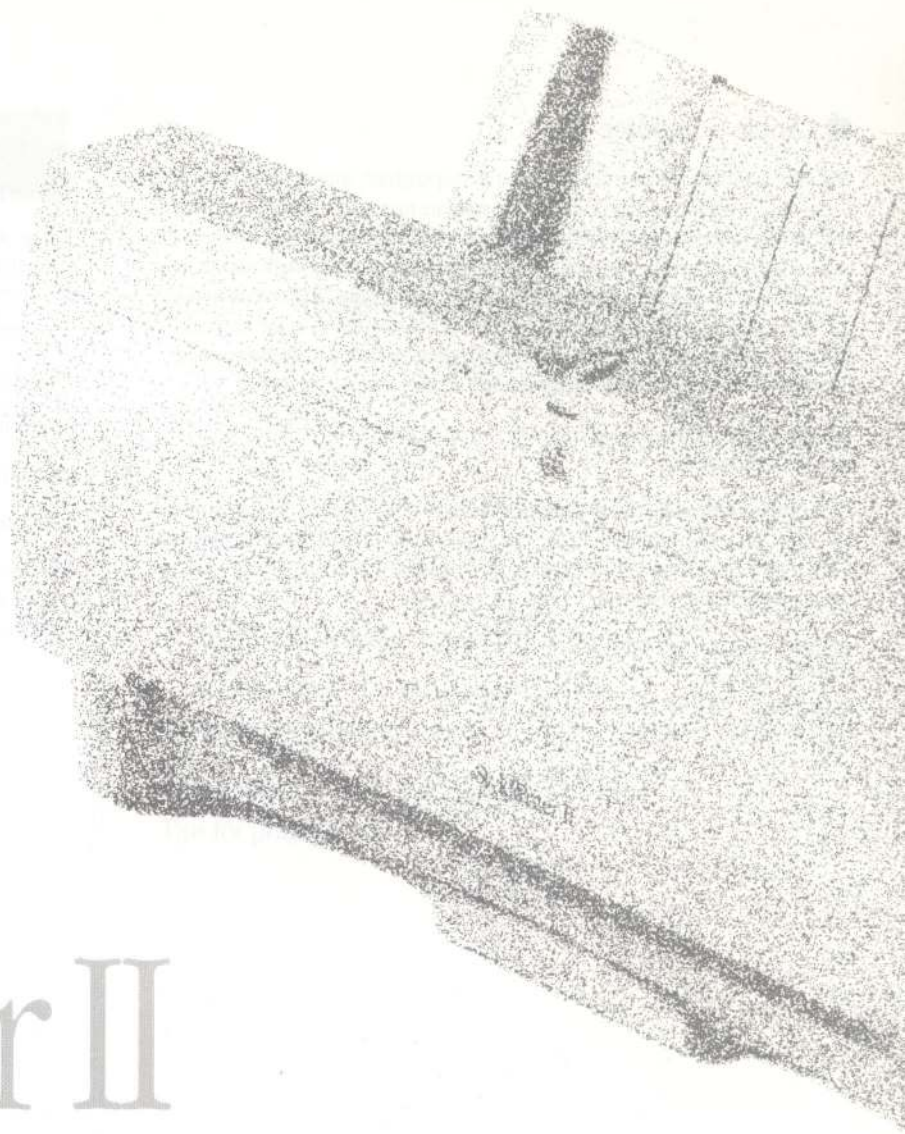


StyleWriter II

User's Guide



StyleWriter II

User's Guide

Apple Computer, Inc.

This manual and the software described in it are copyrighted, with all rights reserved. Under the copyright laws, this manual or the software may not be copied, in whole or part, without written consent of Apple, except in the normal use of the software or to make a backup copy of the software. The same proprietary and copyright notices must be affixed to any permitted copies as were affixed to the original. This exception does not allow copies to be made for others, whether or not sold, but all of the material purchased (with all backup copies) may be sold, given, or loaned to another person. Under the law, copying includes translating into another language or format.

You may use the software on any computer owned by you, but extra copies cannot be made for this purpose.

The Apple logo is a trademark of Apple Computer, Inc., registered in the U.S. and other countries. Use of the "keyboard" Apple logo (Option-Shift-K) for commercial purposes without the prior written consent of Apple may constitute trademark infringement and unfair competition in violation of federal and state laws.

© Apple Computer, Inc., 1992
20525 Mariani Avenue
Cupertino, CA 95014-6299
(408) 996-1010

Apple, the Apple logo, AppleTalk, LaserWriter, Macintosh, MultiFinder, and StyleWriter are trademarks of Apple Computer, Inc., registered in the U.S. and other countries.

Balloon Help, Finder, and System 7 are trademarks of Apple Computer, Inc.

Adobe, Adobe Illustrator, and PostScript are trademarks of Adobe Systems Incorporated, registered in the United States. Adobe Photoshop is a trademark of Adobe Systems Incorporated.

Exposure is a registered trademark of Preferred Publishers, Inc.

ITC Zapf Dingbats is a registered trademark of International Typeface Corporation.

MacPaint is a registered trademark of Claris Corporation.

QuarkXPress is a registered trademark of Quark, Inc.

QMS is a registered trademark, and ColorScript is a trademark, of QMS, Inc.

Mention of third-party products is for informational purposes only and constitutes neither an endorsement nor a recommendation. Apple assumes no responsibility with regard to the performance or use of these products.

Contents

Chapter 1 Getting Started 1

Important safety instructions 2

Watch for these situations and if one occurs pull the plug 3

Set up your StyleWriter II 3

Connect the StyleWriter II to your Macintosh 4

Install the ink cartridge 5

Plug in the StyleWriter II 6

Load paper into the sheet feeder 7

Turn on the StyleWriter II and print the test page 8

Install your printer software 9

Using the Installer 9

Chapter 2 Using Your StyleWriter II 11

Getting Help 11

Choosing a printer 12

Defining your page setup 13

Loading the sheet feeder (with paper, envelopes, or other materials) 14

Printing 16

Printing from within a program or from the desktop 16

Printing while you use your computer 17

Sharing your printer with other users on a network 18

Printing on a shared printer on a network 19

Tips for printing 20

Chapter 3 Maintaining Your Printer 21

Safety first 21

Replacing the ink cartridge 22

Cleaning the ink cartridge 23

Cleaning the exterior 24

Cleaning the interior 24

Chapter 4 Troubleshooting 25

Safety precautions 25

The Chooser doesn't show the StyleWriter II printer icon 26

The Macintosh doesn't recognize the StyleWriter II 26

Text changes to the Geneva font 26

Paper is jammed 27

Paper feeds improperly 28

The StyleWriter II won't print a particular document 28

The lights indicate a problem 29

Image problems 29

Appendix Specifications 33

Index 35

Radio and television interference

The equipment described in this manual generates, uses, and can radiate radio-frequency energy. If it is not installed and used properly—that is, in strict accordance with Apple's instructions—it may cause interference with radio and television reception.

This equipment has been tested and found to comply with the limits for a Class B digital device in accordance with the specifications in Part 15 of FCC rules. These specifications are designed to provide reasonable protection against such interference in a residential installation. However, there is no guarantee that the interference will not occur in a particular installation.

You can determine whether your computer system is causing interference by turning it off. If the interference stops, it was probably caused by the computer or one of the peripheral devices.

If your computer system does cause interference to radio or television reception, try to correct the interference by using one or more of the following measures:

- Turn the television or radio antenna until the interference stops.
- Move the computer to one side or the other of the television or radio.
- Move the computer farther away from the television or radio.
- Plug the computer into an outlet that is on a different circuit from the television or radio. (That is, make certain the computer and the television or radio are on circuits controlled by different circuit breakers or fuses.)

If necessary, consult your authorized Apple dealer or an experienced radio/television technician for additional suggestions. You may find helpful the following booklet, prepared by the Federal Communications Commission: *Interference Handbook* (stock number 004-000-00345-4). This booklet is available from the U.S. Government Printing Office, Washington, DC 20402.

△ **Important:** Changes or modifications to this product not authorized by Apple Computer, Inc., could void the FCC Certification and negate your authority to operate the product.

This product was tested for FCC compliance under conditions that included the use of shielded cables and connectors between system components. It is important that you use shielded cables and connectors to reduce the possibility of causing interference to radios, television sets, and other electronic devices. For Apple peripheral devices, you can obtain the proper shielded cables from your authorized Apple dealer. For non-Apple peripheral devices, contact the manufacturer or dealer for assistance. △

Important

This equipment has been tested and found to comply with the limits for a Class B digital device in accordance with the specifications in Part 15 of FCC rules. See instructions if interference to radio or television reception is suspected.

DOC Class B Compliance This digital apparatus does not exceed the Class B limits for radio noise emissions from digital apparatus set out in the radio interference regulations of the Canadian Department of Communications.

Observation des normes—Classe B Le présent appareil numérique n'émet pas de bruits radioélectriques dépassant les limites applicables aux appareils numériques de la Classe B prescrites dans les règlements sur le brouillage radioélectrique édictés par le Ministère des Communications du Canada.

Chapter 1

Getting Started

The StyleWriter II provides a fast, economical way for you to produce high-quality printed text and gray-scale graphics. You can load it with up to 100 sheets of paper or 15 envelopes at a time. And if your Macintosh is connected to a network, you can share your printer with other users.

The StyleWriter II works with Macintosh computers that use system software version 7 or later. You can also use version 6.0.7 or later. You must have a hard disk drive to use the StyleWriter II. If you're new to the Macintosh, read the books that came with your computer before proceeding. You'll need to know basic operations and vocabulary before you set up and print with the StyleWriter II.

Your StyleWriter II works with all fixed-size and TrueType fonts. TrueType allows you to display and print fonts smoothly in virtually any size. A number of TrueType font families (typefaces) are included on the disks that came with your printer. These fonts are automatically installed on your Macintosh when you follow the directions in this chapter. For more information about using fonts, see the books that came with your Macintosh or with your latest system software update.

Important safety instructions

Read all the instructions in this chapter carefully before you plug the StyleWriter II into an electrical outlet.

For your own safety and the safety of your equipment, always take the following precautions:

- Follow all instructions and warnings dealing with your system.
- Keep the StyleWriter II away from sources of liquids, such as wash basins, bathtubs, and shower stalls.
- Protect the StyleWriter II from dampness or wet weather, such as rain and snow.
- Don't use devices that produce open flames, such as Bunsen burners or welding torches, near the StyleWriter II.
- Don't use ammonia-based or alcohol-based cleaners, which can react chemically with the plastic, on or around the StyleWriter II.

- Don't drink or swallow the ink. It's not toxic, but it's not for human consumption. Keep ink cartridges away from children.
- Avoid getting ink on your clothes. The ink will eventually wash off your hands, but stains on fabrics or clothing are permanent.
- Keep these instructions handy for reference.

▲ **Warning:** Electrical equipment may be hazardous if misused. Operation of the StyleWriter II or of similar products must always be supervised by an adult. Do not allow children access to the interior of any electrical product and do not permit them to handle any cables. ▲

Watch for these situations and if one occurs pull the plug!

If you encounter any of these circumstances, disconnect the power plug immediately! (Pull the plug, not the cord.)

- the power cord or plug is frayed or otherwise damaged
- you spill anything into the case
- the StyleWriter II is exposed to rain or any other excess moisture
- the StyleWriter II has been dropped, or the case has been otherwise damaged
- you suspect that the StyleWriter II needs servicing or repair
- you plan to clean the printer

If you suspect your StyleWriter II is damaged, see the information about service and support that came with it.

Set up your StyleWriter II

You're ready to set up your StyleWriter II. If you haven't already done so, unpack your printer and make sure you have everything listed on your packing list.

Choose a location near your Macintosh computer that has a grounded electrical outlet, and good ventilation, is out of direct sunlight, and never gets damp, very hot, or very cold. The printer works best at

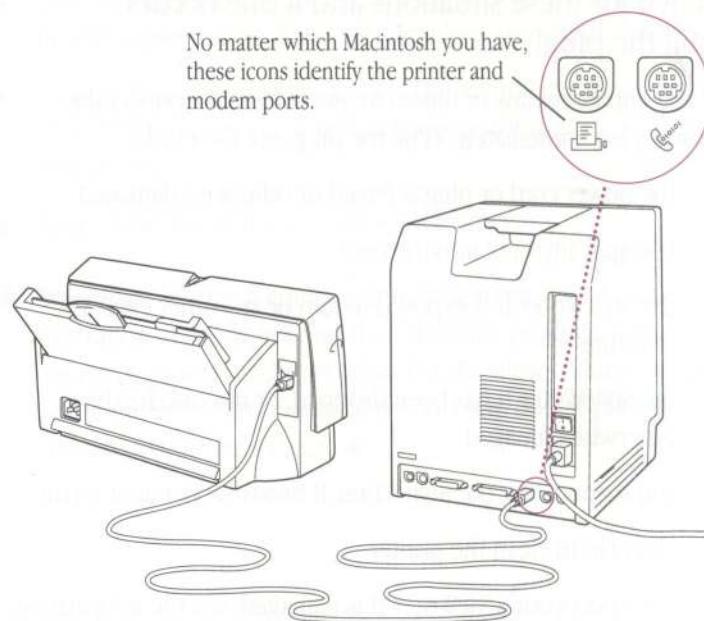
- temperatures between 59° and 86° Fahrenheit (15° and 30° Celsius)
- relative humidity between 20 and 70 percent

See the appendix for more specific information about the physical requirements of the printer.

Connect the StyleWriter II to your Macintosh

To connect your StyleWriter II to your Macintosh computer, you need a peripheral-8 cable.

Before you connect the StyleWriter II to your Macintosh, make sure the computer is turned off. Then use a peripheral-8 cable to connect the printer to the computer as shown. It doesn't matter which end of the cable you use first; both ends are the same.

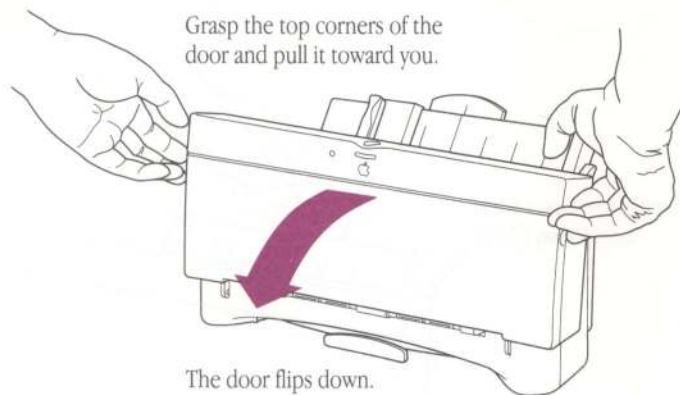


△ **Important:** It's OK to connect the StyleWriter II to either the printer port or the modem port. △

Install the ink cartridge

The ink cartridge contains the ink the printer uses. Each cartridge lasts for several hundred pages, depending on the kind of printing you do.

1. Open the access door at the front of the printer.

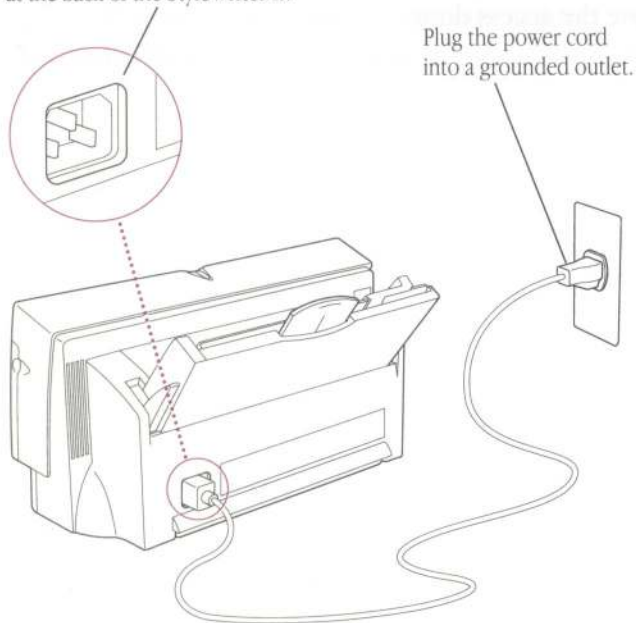


2. Open the package containing your ink cartridge.
3. Get the ink cartridge ready by following the instructions that came with it.
4. To install the cartridge, follow the instructions inside the door of the printer.
5. Close the access door.

Plug in the StyleWriter II

Connect the power cord to the StyleWriter II first, then plug the other end of the cord into a grounded electrical outlet.

Insert the power cord into the receptacle at the back of the StyleWriter II.



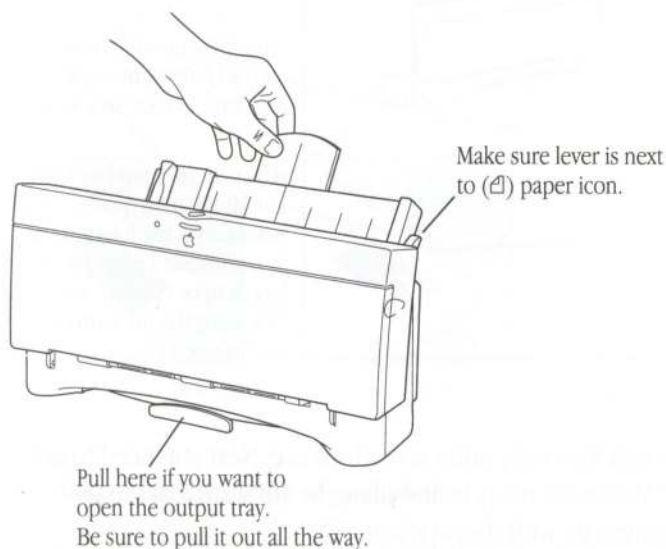
▲ **Warning:** *This equipment is meant to be electrically grounded. Do not defeat the purpose of the grounding plug!* The StyleWriter II is equipped with a three-wire grounding plug—a plug that has a third (grounding) pin. This plug fits only a grounding-type AC outlet. If you are unable to insert the plug into an outlet, contact a licensed electrician to replace the outlet with a properly grounded one. ▲

Load paper into the sheet feeder

The sheet feeder holds up to 100 sheets of 20-lb. paper and feeds the paper automatically into the printer. To load paper into the sheet feeder, follow these steps:

1. Raise the paper support as shown.

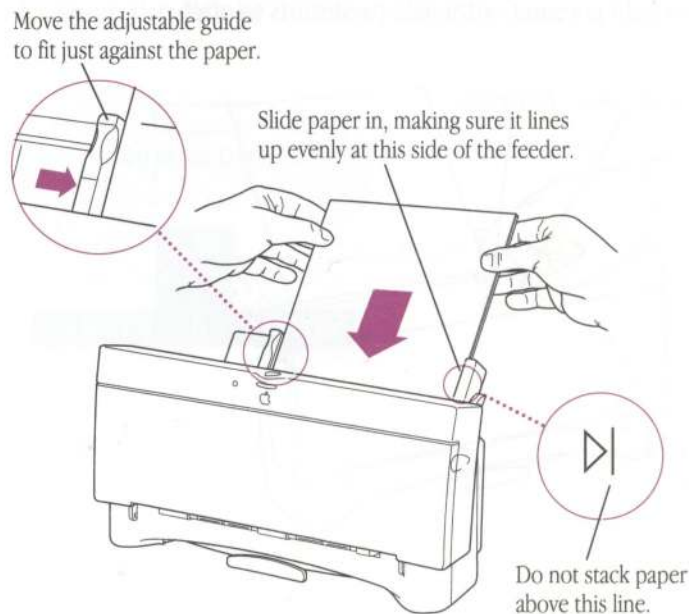
You can also open the output tray if you wish.





2. Load a stack of paper into the sheet feeder.

Move the adjustable guide so that it just touches the edge of the paper. If the stack of paper bows out even slightly, the guide is too tight.

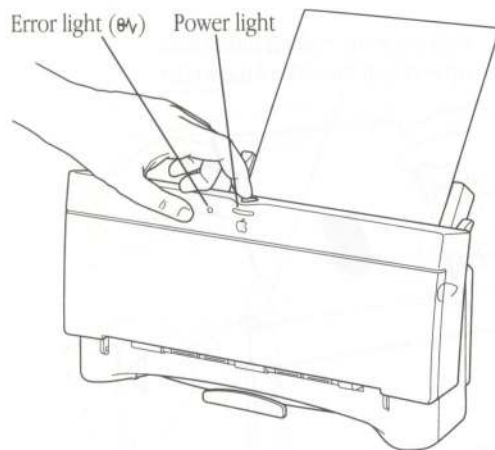
Be careful not to overload the sheet feeder. The stack of paper should not be higher than the indicator line on the right side of the sheet feeder.



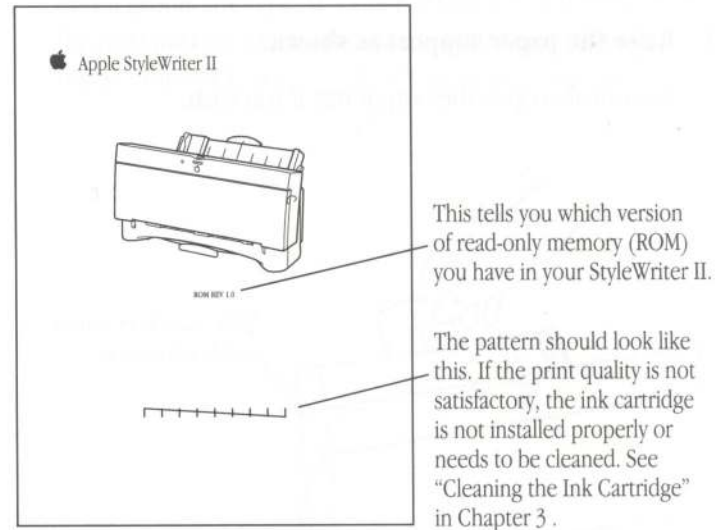
Turn on the StyleWriter II and print the test page

For normal use you turn the printer on by pressing the power button (marked with the  icon). When you turn on the printer, the amber error light (marked with the  icon) comes on for a moment, then blinks off when you release the power button. The green power light comes on and stays on.

To print a test page, start with the printer turned off. Press and hold down the power button for several seconds, until the amber error light goes out or the test page starts to print.



The test page displays the version of the software built into the StyleWriter II. The test pattern printed below the picture of the printer can indicate problems with the ink cartridge.

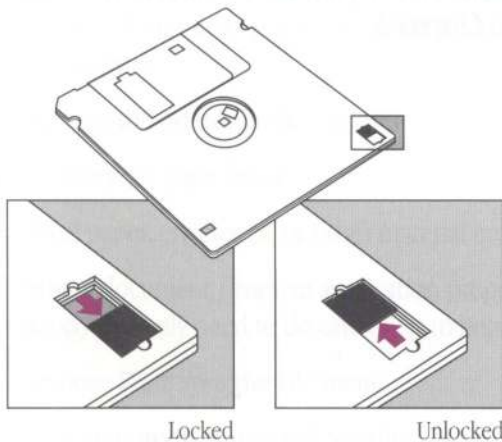


Your StyleWriter II printer is ready to use. Next you need to get your Macintosh ready by installing the software that lets it communicate with the StyleWriter II.

Install your printer software

Before you install the printer software, you need to protect the original disks by locking them and making backup copies. Follow these steps:

1. Lock the disks that came with your StyleWriter II.



2. Make a backup copy of each disk.

You can find instructions for copying disks in the books that came with your Macintosh. You'll need a blank 800 kilobyte (K) floppy disk for each disk you want to copy.

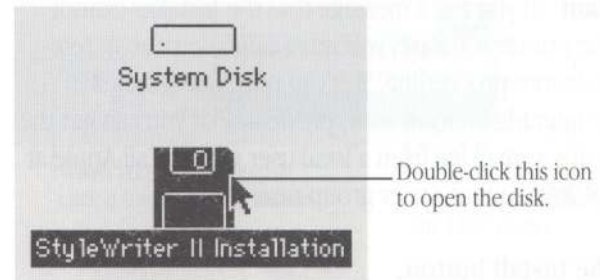
Using the Installer

The StyleWriter II comes with a program called the Installer that installs printer software onto your hard disk. Follow these steps to install the software:

1. Insert the *StyleWriter II Installation* disk into a floppy disk drive.

The disk's icon appears on the desktop.

2. Open the disk by double-clicking its icon.



continues ►

3. Open the Installer by double-clicking its icon.



Double-click this icon to open the Installer.

When you open the Installer, it displays information about the files to be installed. Click OK.

△ **Important:** If you see a message that the Installer cannot install the printer software, you must upgrade your system software before proceeding. You can purchase a system software upgrade kit from an Apple dealer, or you can get the software for a small fee from a local user group. Call Apple at (800)538-9696 to find a user group near you. △

4. Click the Install button.

The Installer takes a few moments to calculate what needs to be done and then begins to copy files. The whole process may take several minutes.

5. When the *StyleWriter II Installation* disk is ejected, follow the instructions you see on the screen.

You'll have to swap disks a few times. Each time, the Installer ejects one disk and asks you to insert another. Keep following the instructions on the screen until the installation is complete.

When the installation is complete and you are ready to start printing, turn to Chapter 2.

Chapter 2

Using your StyleWriter II

Before you can print documents on your StyleWriter II, you need to do three things first (you do not need to do these things every time you print):

- choose the printer in the Chooser
- define your page setup
- load paper, envelopes, or other material into the printer

To print a document (from an application program or from the desktop) you only need to do one thing to begin:

- choose Print from the File menu

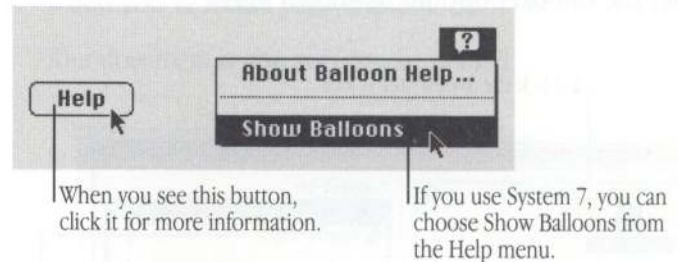
If your computer is connected to other Macintosh computers over a network, you can also:

- share your printer with other users on the network
- use a printer someone else has shared on the network

This chapter tells you how to do all of these things.

Getting help

If you need more information about the choices presented on your screen when you use your StyleWriter II, click the Help button when you see it. If you are using System 7, you can choose Show Balloons from the Help menu.



Choosing a printer

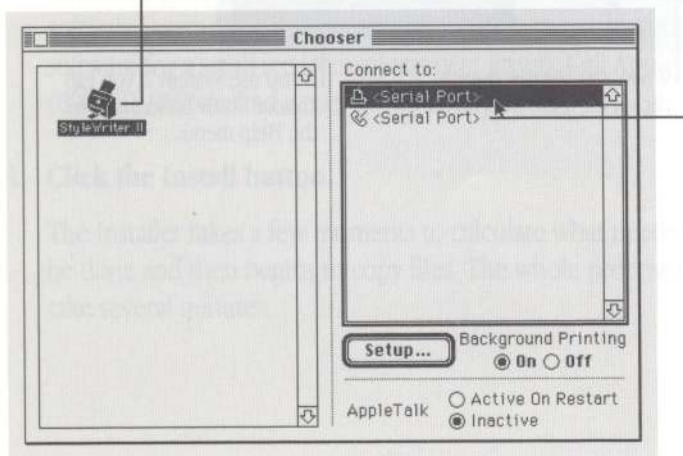
Before you use your StyleWriter II for the first time, you must use the Chooser to let the Macintosh know what printer you want to use.

1. Choose the Chooser from the Apple () menu.

The Chooser window opens. (Your Chooser may not look exactly like the illustration, but it should contain the same elements.)

2. Set the Chooser options as shown here:

1 Click the StyleWriter II icon.



2 Click the top icon if you plugged the printer into the printer port, or the bottom icon if you plugged it into the modem port.

3. Click the close box.

The Chooser closes.

△ **Important:** You don't need to use the Chooser every time you print. If the StyleWriter II is the only printer you're using, this should be the only time you need to use the Chooser to choose the printer. △

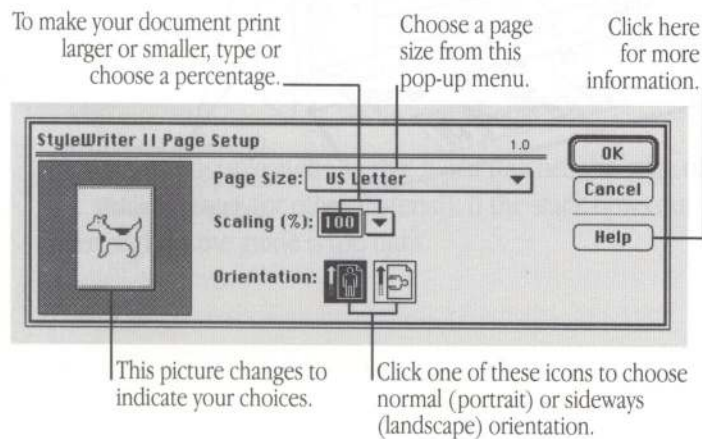
Defining your page setup

You do not have to use Page Setup every time you print; the most frequently used options are preset for you. To change your printing options in the Finder or in an application program, follow these steps:

1. Choose Page Setup from the File menu.

The Page Setup dialog box appears. The dialog box you see may not look exactly like the one shown here, but all Page Setup dialog boxes have many features in common.

2. In the dialog box, make the selections you want.



Choose the page size you want from the Page Size pop-up menu.

Use the Scaling feature to print your document larger or smaller than normal. Use the pop-up menu to choose a preset reduction percentage, or type a percentage from 5 to 999 in the Scaling box. The percentages listed on the pop-up menu give the best results for printing smaller than 100%.

The Orientation icons allow you to print your document in normal (portrait) or sideways (landscape) orientation.

3. When you've made your choices, click OK.

Your document is now set up to be printed.

Loading the sheet feeder

The sheet feeder holds up to 100 sheets of 20-lb. paper. You can use plain paper, letterhead, or three-hole punched paper. If you use thicker paper, fewer sheets will fit in the sheet feeder.

△ **Important:** Paper weight should be between 16 and 24 lb; 20-lb. cotton bond paper is recommended. △

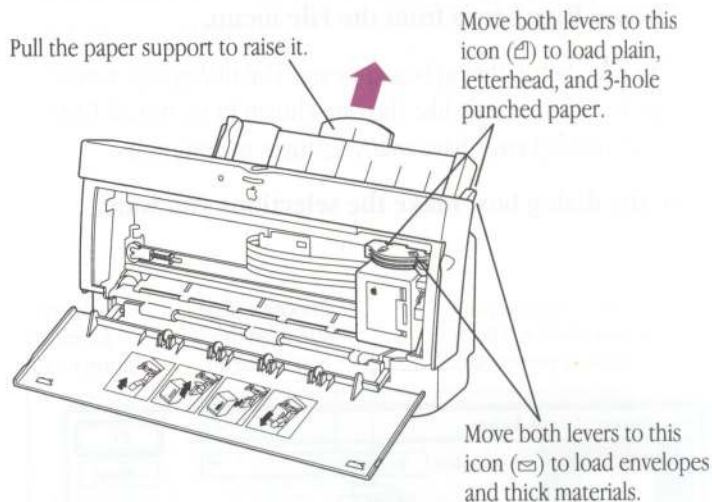
You can load other materials into the sheet feeder, including transparencies, labels, heavy (thick) paper (up to 28 lb.), and up to 15 business envelopes. *Before you load envelopes or thick paper into the sheet feeder, you must move the adjustment levers to the envelope settings.*

△ **Important:** Insert only one kind of material at a time into the sheet feeder. △

To load the sheet feeder, follow these steps:

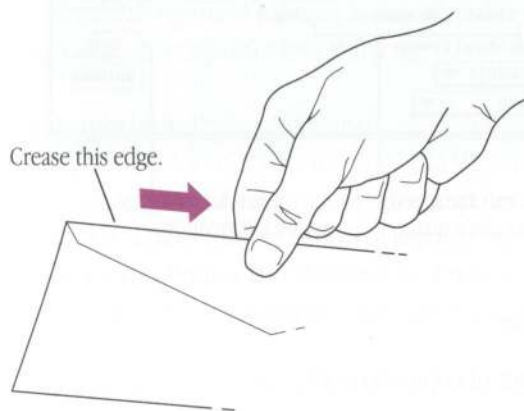
1. Set up the StyleWriter II as shown.

Move both levers to the paper icon (to load paper) or to the envelope icon (to load envelopes or thick materials).



2. Load paper or other material into the sheet feeder.

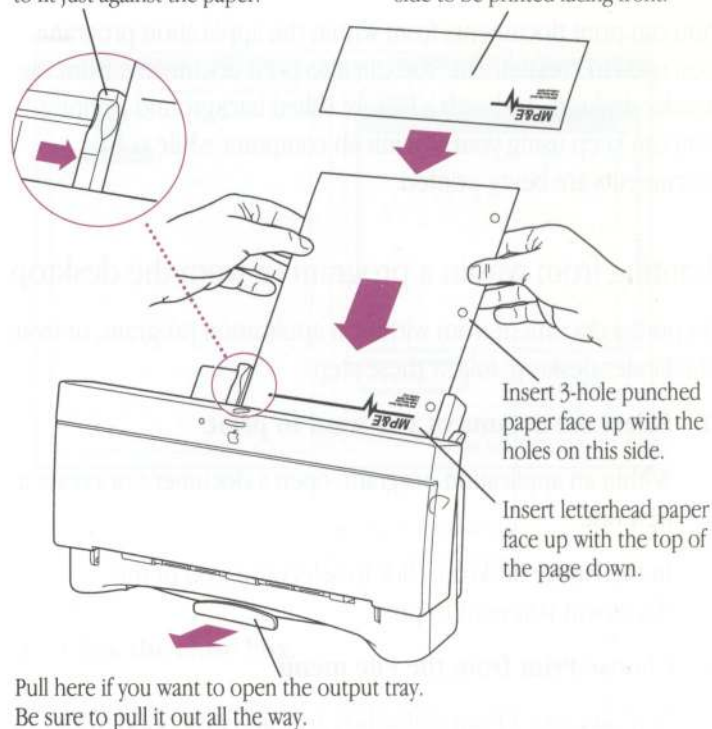
For best results, crease the leading edge of envelopes, as shown, before you load them into the sheet feeder.



Move the adjustable guide so that it just touches the edge of the stack of paper (or other material). If the stack bows out even slightly, the guide is too tight.

Move the adjustable guide to fit just against the paper.

Insert envelopes top first, with the side to be printed facing front.



Printing

You can print documents from within the application programs you used to create them. You can also print documents from the Finder desktop. And with a feature called background printing, you can keep using your Macintosh computer while your documents are being printed.

Printing from within a program or from the desktop

To print a document from within an application program, or from the Finder desktop, follow these steps:

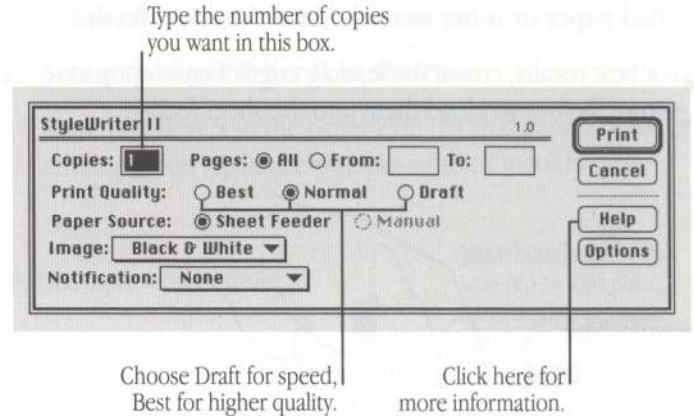
1. Select the document you want to print.

Within an application program, open a document or create a new one.

In the Finder desktop, click to select the icon of the document you want to print.

2. Choose Print from the File menu.

In most cases a Print dialog box appears, with options for printing your document. The dialog box may not look exactly like the one shown here, but it will have the options shown in this one.



You can choose:

- the number of copies to print.
 - the range of pages to print
 - Draft quality for faster printing with lower quality, Normal quality to balance speed and appearance, or Best quality for finest quality at slower speed
 - Black & White or Grayscale, to match the type of images in your document (use Black & White for text)
 - the notification you want when your document is printed (you can choose to be notified by an Alert message that appears on your screen or by a sound)
3. When the settings are the way you want them, click **Print**.

Printing while you use your computer

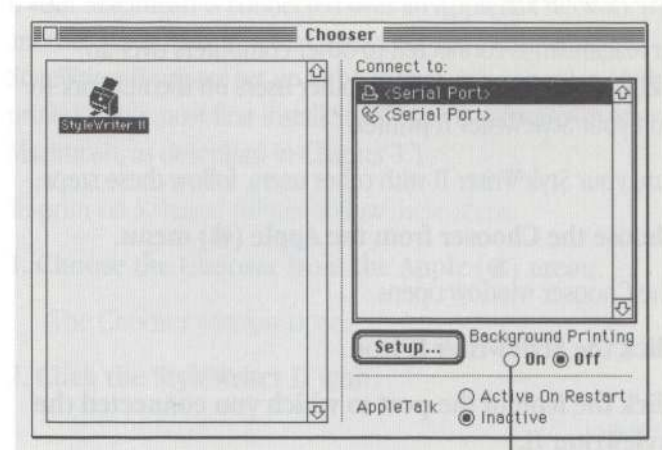
If you are using System 7 (or MultiFinder in System 6), you can print with the StyleWriter II while continuing to work with one or more programs. This is called background printing. If you use System 7, background printing is automatically turned on when you install your StyleWriter II software.

△ **Important:** If your Macintosh computer has only 1 megabyte (MB) of random-access memory (RAM), you won't be able to use background printing. If your computer has 2 MB of RAM and you have trouble using background printing, turn off the Share this Printer and Background Printing options, or quit one or more of your open application programs. △

To use background printing, you must turn it on in the Chooser.

1. **Choose Chooser from the Apple () menu.**
2. **Click the StyleWriter II icon.**

3. **Click the On button under Background Printing.**



Click here to turn on
Background Printing

4. **Click the close box.**

Once background printing is turned on, it is in effect whenever you print, until you turn it off.

After you click Print in the Print dialog box, a message appears on the screen for a few seconds, then disappears. You can then continue other work. You may notice your Macintosh pause occasionally while it processes the document for printing.

Sharing your printer with other users on a network

If your Macintosh is connected to other computers over an AppleTalk network, you can allow other users on the network to print on your StyleWriter II printer.

To share your StyleWriter II with other users, follow these steps:

1. Choose the Chooser from the Apple (Apple) menu.

The Chooser window opens.

2. Click the StyleWriter II icon.

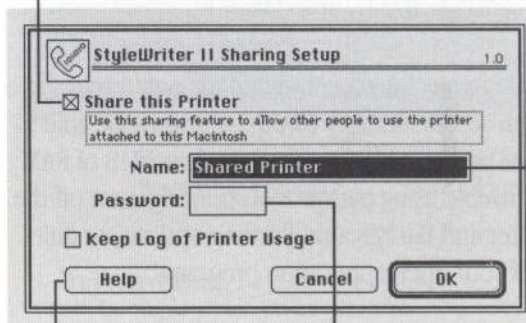
3. Click the icon of the port to which you connected the StyleWriter II.

If you used the Printer port to connect your Macintosh to the network, you must connect the StyleWriter II to the modem port.

4. Click Setup.

The Sharing Setup dialog box opens.

Click to place an X in this box to share your printer.



Type a name for your printer here.

To keep a record of what is printed, click here.

To make your printer available only to people you choose, type a password here.

5. Click to place an X in the Share this Printer box.

If you wish, you can type a name for the printer and a password. If you type a password for the printer, only users who know the password can use the printer from their computers.

6. If you want to keep a record of what is printed on your printer, click to place an X in the Keep Log of Printer Usage box.

To see what has been printed, you can open and print the log file with the TeachText program, or with a word-processing program. You can find the log file in the Printing Prefs folder. The Printing Prefs folder is in the Preferences folder inside your System Folder.

- ❖ *Note:* You can keep a log of your printer usage even if your printer is not shared. ❖

7. Click OK.

8. Click the close box to close the Chooser window.

Other users with Macintoshes connected to the network can now use your StyleWriter II printer (if StyleWriter II printer software has been installed on their Macintosh computers as described in Chapter 1).

- ❖ *Note:* When other users print on a printer connected to your Macintosh while you are using your computer, you may notice your computer pause occasionally. ❖

Printing on a shared printer on a network

If your Macintosh is connected over an AppleTalk network to another Macintosh, and that computer has a connected StyleWriter II printer set up to be shared, you can print on that printer. (You must first install StyleWriter II software on your Macintosh, as described in Chapter 1.)

To print on a shared printer, follow these steps:

1. Choose the Chooser from the Apple () menu.

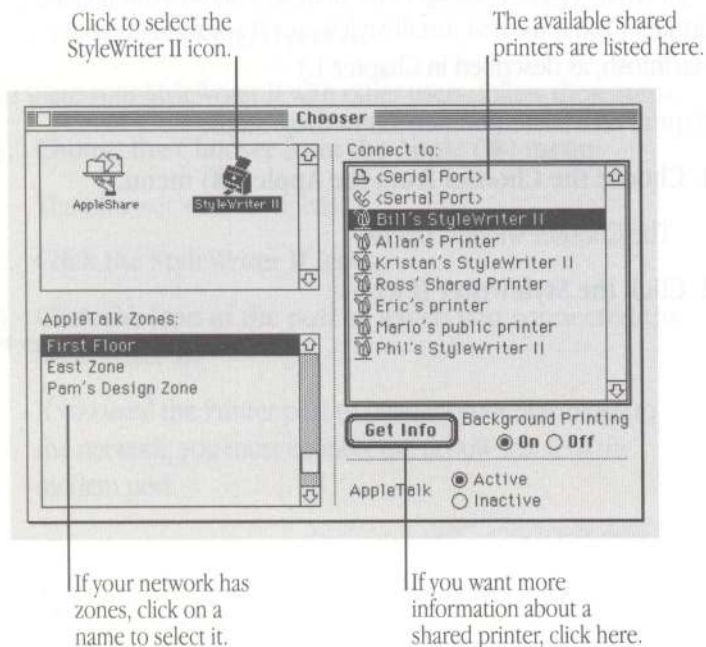
The Chooser window opens.

2. Click the StyleWriter II icon.

continues ►

3. If necessary, click an AppleTalk zone.

If your network does not have zones, the list of AppleTalk Zones does not appear.



4. Click the name of the printer you want to use.

If the printer requires a password, a dialog box appears in which you must type the password.

- ❖ **Note:** The fonts you use in your document must be available (installed) on the Macintosh that is directly connected to the shared StyleWriter II. If the fonts you use are not installed, your document may not print properly. Click Get Info for information about fonts available on the shared printer you selected. ❖

5. Close the Chooser window.

You are now ready to print on the shared StyleWriter II.

Tips for printing

Try these tips for best results with your StyleWriter II:

- **Legal-size paper.** When you print on paper longer than 11 inches, close the output tray. (It's designed for paper no more than 11 inches long.)
- **Transparencies.** Set both adjustment levers to the paper icon (⌂). When you print several transparencies, remove each one from the output tray before the next one comes out of the printer. (This eliminates any chance of the ink smearing.).
- **Envelopes.** Set both adjustment levers to the envelope icon (✉). Before loading envelopes into the sheet feeder, crease the top edge to make sure the flap is tightly folded..

Chapter 3

Maintaining Your Printer

The StyleWriter II is designed for trouble-free operation. Maintaining the printer simply means replacing the ink cartridge when it runs out, refilling the sheet feeder, and occasional cleaning.

For other service, see the information about service and support that came with your StyleWriter II.

Safety first

Follow these safety tips to avoid damage to the StyleWriter II printer and harm to yourself and other users.

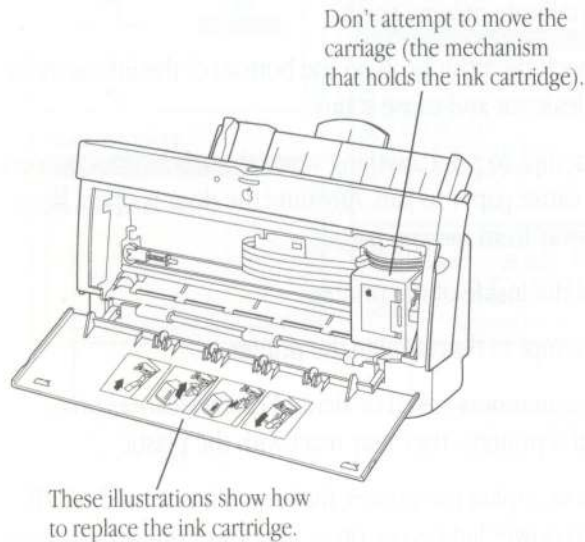
- Don't move the carriage that holds the ink cartridge. You can damage delicate moving parts.
- Don't touch the print head on the bottom of the ink cartridge. Ink can leak out and cause stains.
- Don't attempt to print anything when the access door is open; this can cause paper to jam. Any time the door is open, keep fingers away from moving parts.
- Don't oil the inside of the printer.
- Don't attempt to disassemble the printer.
- Don't use ammonia-based or alcohol-based cleaners on or around the printer—they may react with the plastic.
- Before you unplug the printer, make sure it is turned off. (If the green power light is on, press the power button.) Turning the power off ensures that the carriage has been returned securely to its home position.

Replacing the ink cartridge

Each ink cartridge lasts for several hundred pages, depending on the kind of printing you do. If you print a lot of graphic images, you may need to change cartridges more often.

To replace the ink cartridge, follow these steps:

1. Open the access door at the front of the printer.



2. Open the package containing the new ink cartridge.

3. Get the ink cartridge ready by following the instructions that came with it.

4. Raise the lever to release the old cartridge and remove it.

See the instructions inside the door of the printer.

5. Insert and lock the new cartridge.

See the instructions inside the door of the printer.

6. Close the access door.

You have finished replacing the ink cartridge.

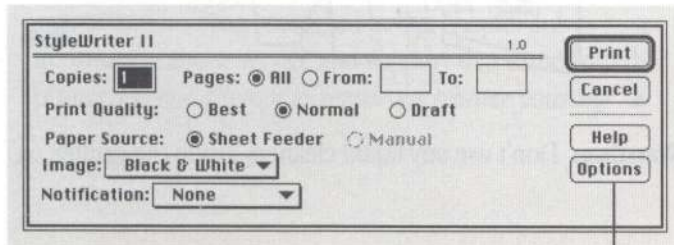
Cleaning the ink cartridge

If you experience problems with print quality, cleaning the ink cartridge may improve your results. For examples of problems you might experience with print quality, see “Image Problems” in Chapter 4, “Troubleshooting.”

- △ **Important:** Cleaning the ink cartridge consumes a small amount of ink. If you repeat the procedure unnecessarily, you reduce the life of the cartridge. △

To clean the ink cartridge, follow these steps:

1. **When you are about to print a document, click Options in the Print dialog box.**

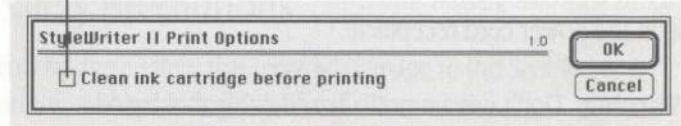


Click Options.

The Print Options dialog box appears.

2. **Click to place an X in the box labeled “Clean ink cartridge before printing.”**

Click to place an X in this box.



3. **Click OK.**
4. **Click Print.**

The StyleWriter II automatically cleans the ink cartridge before printing your document.

- △ **Important:** After the StyleWriter II cleans the ink cartridge and prints your document, the cleaning option is automatically turned off. You do not have to turn it off before printing again. △

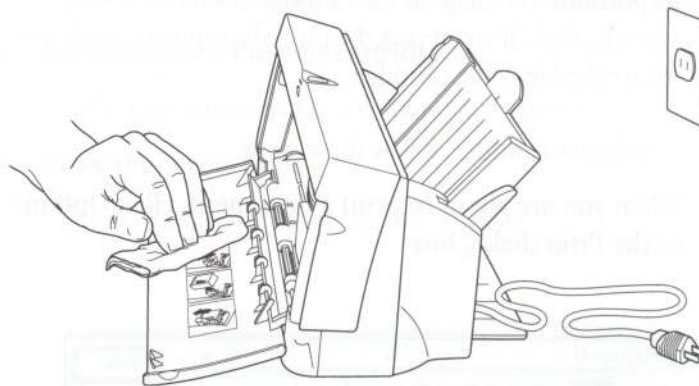
Cleaning the exterior

Before you clean the StyleWriter II printer, turn it off and unplug the power cord. Then wipe the exterior of the printer with a clean, soft cloth dampened with water. Be careful not to get any liquid in the power cord receptacle.

▲ **Warning:** Don't use ammonia-based or alcohol-based cleaners on or around the printer—they may react with the plastic. ▲

Cleaning the interior

Occasionally you may need to wipe off paper dust or spilled drops of ink inside the StyleWriter II. Before you clean the inside of the printer, turn it off and unplug the power cord. Then gently wipe the interior with a soft, dry cloth.



▲ **Warning:** Don't use any liquid cleaners inside the printer. ▲

Chapter 4

Troubleshooting

This chapter provides solutions to some common problems that you may encounter while using your StyleWriter II printer.

As long as you follow the maintenance instructions in Chapter 3, you're not likely to have any problems with your StyleWriter II. The most common source of trouble is faulty software installation. To avoid these problems, follow the instructions in Chapter 1.

▲ **Warning:** If you have a problem with your StyleWriter II printer and nothing presented in this chapter solves it, see the information about service and support that came with the printer. *Do not attempt to repair the printer yourself!* ▲

Safety precautions

Follow these safety tips to avoid damage to the StyleWriter II printer and harm to yourself and other users.

- Don't move the carriage that holds the ink cartridge. You can damage delicate mechanical parts.
- Don't touch the print head on the bottom of the ink cartridge. Ink can leak out and cause stains.
- Don't attempt to print anything when the access door is open; this can cause paper to jam. Any time the door is open, keep your fingers away from moving parts.
- Don't oil the inside of the printer.
- Don't attempt to disassemble the printer.
- Before you unplug the printer, make sure it is turned off. (If the green power light is on, press the power button.) Turning the power off ensures that the carriage has been returned securely to its home position.

The Chooser doesn't show the StyleWriter II printer icon

You use the Chooser desk accessory to identify the printer you intend to use. If the StyleWriter II icon is missing from the box that identifies different printer types, you probably need to install the appropriate printer software. See the instructions in Chapter 1 for installing your printer software.

The Macintosh doesn't recognize the StyleWriter II

If you have selected the StyleWriter II icon in the Chooser, but nothing prints or you get a message that there is no StyleWriter II connected, one of the following conditions may be the cause:

- The printer has been turned off. Make sure it is plugged in and turned on.
- A plug is loose somewhere. Make sure that all the cables are properly connected. See the instructions in Chapter 1 for setting up your StyleWriter II.
- If you are trying to use a shared printer connected to another Macintosh, make sure that the computer and shared printer are turned on and connected to the network. Also make sure that the printer is set up to be shared. See the instructions in "Sharing Your Printer With Other Users on a Network" in Chapter 2.

- The port selected in the Chooser isn't the same as the port the printer is plugged into on the Macintosh. Try switching from the printer icon to the modem icon (or vice versa) in the Chooser.
- There may be a problem with the printer software. Try turning the printer off and then on again.

If you still can't resolve the problem, the printer may not be functioning properly. See the information about service and support that came with your printer.

Text changes to the Geneva font

When your Macintosh is low on memory, some fonts may be displayed and printed in the Geneva font. Some text may also look jagged on the edges rather than smooth.

For more information about fonts, and for suggestions on how to free up memory, see the books that came with your Macintosh or with your latest system software upgrade. You can also see an authorized Apple service provider about installing more memory in your Macintosh.

If text changes to the Geneva font when you are printing on a shared printer, the fonts in your document may not be available on the Macintosh connected directly to the shared printer. Use only the fonts installed on that Macintosh. For more information, see "Printing on a Shared Printer on a Network" in Chapter 2.

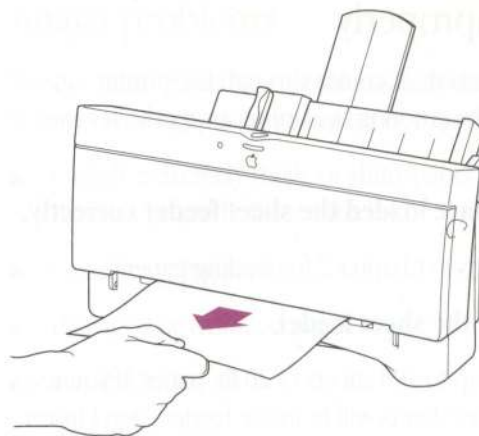
Paper is jammed

Occasionally a piece of paper may get jammed (stuck) inside the printer during the printing process. To clear a paper jam:

1. **If necessary, open the printer to see where the jam is.**
2. **Clear the jam.**

Pull jammed sheets from the back of the printer whenever possible.

Remove jammed paper this way if you can.



Paper feeds improperly

If paper tears, gets skewed, or comes through the printer crumpled, it may not be entering the printer properly. Try the following steps:

- **Make sure you have loaded the sheet feeder correctly.**

See the instructions in Chapter 2 for loading paper.

- **Do not overload the sheet feeder.**

The feeder holds up to 100 sheets of 20-lb. paper. If you use heavier paper, fewer sheets will fit in the feeder. Don't insert too much paper in one stack.

- **Try to recover any torn or damaged pieces of paper from the printer.**

See "Paper Is Jammed" earlier in this chapter.

- **Take the paper out of the sheet feeder and check it.**

Try flipping the stack over to print on the other side (most paper has one side that prints better).

Fan the paper to make sure sheets don't stick together.

Make sure none of the sheets are bent or dog-eared.

Make sure the edges of the stack line up evenly.

The StyleWriter II won't print a particular document

If you attempt to print a document and no page is printed, try the following steps:

- **Check for messages on your Macintosh screen.**

- **Check the printer.**

Does it have paper? (To load paper, see Chapter 2.)

Is the paper jammed? (To clear a jam, see "Paper Is Jammed" earlier in this chapter.)

Do the lights indicate a problem? (To check the lights, see the next section.)

- **Repeat the printing process.**

Sometimes problems disappear when you try to print your document again.

The lights indicate a problem

Sometimes the lights on the printer can signal a problem. The following list describes these indications and tells what you should do about them.

- **Both lights are off.** Check to make sure the power cord is plugged in properly and the printer is turned on. Make sure there is power to the outlet. If the lights stay off, see the information about service and support that came with the printer.
- **The error light glows steadily.** Either the printer is out of paper or paper has been misfed. Check your Macintosh screen for messages. See Chapter 2 for instructions on loading the sheet feeder, or “Paper Is Jammed” and “Paper Feeds Improperly” earlier in this chapter.

Image problems

Most of these result from problems with the ink cartridge or with your choice of paper. Here is a list of papers to avoid:

- coated, extremely thick, or shiny paper (because the paper may not properly absorb the ink)
- erasable typing paper
- damaged or wrinkled paper
- stapled paper
- multipart forms

For best print quality, use 16-lb. to 24-lb. cotton bond paper.

Image is too light or too dark

If printing looks fuzzy because it's too light or too dark, try the following:

- Clean the ink cartridge. If this doesn't help, replace the cartridge. See "Cleaning the Ink Cartridge" and "Replacing the Ink Cartridge" in Chapter 3 for instructions.
- If the problem occurs on nonstandard paper, try printing on the recommended 16-lb. to 24-lb. cotton bond paper.
- Try flipping the stack of paper in the sheet feeder. Most paper has one side that prints better.
- Make sure that both adjustment levers are set to the proper icon (Ⓐ for 16-lb. to 24-lb. paper and transparencies; Ⓑ for envelope and paper heavier than 24-lb.). See "Loading the Sheet Feeder" in Chapter 2 for instructions.

Ink smears when rubbed

Don't handle pages before they are completely ejected from the printer and are delivered into the output tray. This allows all the time needed for the ink to dry.

Printing appears on only part of the paper

Make sure you have selected the appropriate paper size in the Page Setup dialog box.

The ink cartridge may need to be cleaned, or it may be empty. See "Cleaning the Ink Cartridge" and "Replacing the Ink Cartridge" in Chapter 3 for instructions.

A page prints off center or images are out of place

This problem may be a result of one of the following conditions:

- You may have selected the wrong page size in the Page Setup dialog box.
- The margins may be set incorrectly in the document you are printing.
- The sheet feeder is too full.
- Paper is not placed properly in the sheet feeder. See “Paper Feeds Improperly” earlier in this chapter.
- You are not using the recommended paper (16-lb. to 24-lb. cotton bond).

Nothing prints on the paper

If you get a blank page, clean the ink cartridge. See “Cleaning the Ink Cartridge” in Chapter 3.

If that doesn't work, replace the ink cartridge. See “Replacing the Ink Cartridge” in Chapter 3.

Unwanted lines or stripes appear

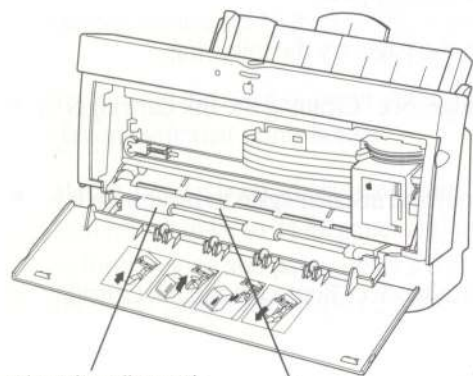
If white lines appear on the page, try the following:

- Clean the ink cartridge. See “Cleaning the Ink Cartridge” in Chapter 3.
- Take the cartridge out and install it again to make sure it is secured properly.
- Replace the ink cartridge. See “Replacing the Ink Cartridge” in Chapter 3.

Stains appear on printed pages

If stains appear on the backs or tops of printed pages, it may mean that there is ink inside the printer. If so, the ink can transfer to the rollers and from there to the paper.

Turn the printer off and unplug it. Then open the printer and carefully clean the rollers and platen with a soft, dry cloth.



Clean the rollers with
a soft, dry cloth.

Clean the platen.

Image prints wavy or distorted

Wavy or distorted images usually mean that your StyleWriter II requires service. Try cleaning the ink cartridge. (See "Cleaning the Ink Cartridge" in Chapter 3.) Also check the setting of the adjustment lever inside the printer (above the ink cartridge). If the problem persists, see the information about service and support that came with the printer.

Appendix

Specifications

Marking engine

- Thermal ink jet

Resolution

- 360 dots per inch (dpi) for text and graphics (180 dpi in draft mode)

Speed

- Up to 3 pages per minute in draft mode
- Up to 2 pages per minute in normal mode
- Up to 1.5 page per minute in best mode
- Actual speed depends on the images printed and on the Macintosh used.

Interface

- Apple-style RS-422 asynchronous serial

Paper feed

- Automatic sheet feeder holds up to 100 sheets of 20-lb. (75 g/m²) paper or 15 envelopes.

Printing materials

- Apple recommends 20-lb. cotton bond (75 g/m²) paper. You can use 16-lb. (60 g/m²) to 24-lb. (90 g/m²) paper.
- Accepts most letterhead and colored stock.
- Accepts medium-weight photocopier labels.
- Use #10 business envelopes: 243.5mm x 105.8mm (9.5" x 4.125").
- Apple recommends 3M brand CG3480 transparency film.

Paper sizes

- U.S. letter: 215.9mm x 279.4mm (8.5" x 11")
- U.S. legal: 215.9mm x 355.6mm (8.5" x 14")
- Executive: 184.2mm x 266.7mm (7.25" x 10.5")
- A4 letter: 210mm x 297mm (8.3" x 11.7")
- Monarch envelopes: 104.1mm x 241.3mm (4.1" x 9.5")
- #10 envelopes: 241.3mm x 104.8mm (9.5" x 4.125")

Imageable area

- Maximum printable line: 203.2 mm (8.0").
- Minimum top and bottom margins: 6.25 mm (0.25").
- Minimum left and right margins: 6.35 mm (0.25").
- Actual imageable area may vary depending on the application program.

Dimensions

- Height (paper support down): 18 cm (7")
- Width: 34.5 cm (13.6")
- Depth (output tray closed): 20 cm (7.9")

Weight

- 3 kg (6.6 lb.)

Operating environment

Temperature

- 15° to 30° C (59° to 86° F)

Humidity

- 20 to 70 percent, noncondensing

Other

- Keep the printer away from wind and fans.

Input electrical requirements

U.S./Japan

- 90–128 VAC, 48–62 Hz

Europe/UK/Australia

- 198–264 VAC, 48–52 Hz

Power consumption

Operating

- 19.5 W maximum at 120 V
- 18 W maximum at 220 V

Index

A

access door 5, 21, 25
amber error light 8, 29
Apple menu. *See* Chooser
AppleTalk. *See* network printing
application software, printing from 16

B

background printing 17
backing up disks 9

C

cables
 Chooser problems and 26
 peripheral-8 cable 4
cartridge. *See* ink cartridge
Chooser
 background printing and 17
 choosing printer in 12
 network printing and 18, 19–20
 Setup option 18
 troubleshooting 26

choosing
 location for printer 3
 printer in Chooser 12
cleaning
 exterior 24
 ink cartridge 23
 interior 24, 32
 safety instructions 2, 21, 25
commands
 Page Setup command 13
 Print command 11, 16
connecting printer to Macintosh 4

D

dark images on page 30
desktop, printing from 16
dimensions of printer 34
disks
 installation 9–10
 locking 9
distorted images 32
door, access 5, 21, 25
dots per inch (dpi) 33

E

electrical requirements 6, 34
envelopes 14–15, 20, 33. *See also* paper
environmental requirements 3, 34
error light 8, 29
error messages, installation 10
exterior cleaning 24

F

File menu
 Page Setup command 13
 Print command 11, 16
Finder desktop, printing from 16
fonts
 network printing and 20
 StyleWriter II and 1
 troubleshooting 26

G

Geneva font 26
green power light 8, 29
grounded outlets 6

H

- heavy weight paper 14, 20
- help options 11
- humidity requirements 3, 34

I

- icons
 - error light 8
 - Installer 9–10
 - missing 26
 - power switch 8
 - sheet feeder 14, 30
 - StyleWriter II 12, 26
- image problems 29–32. *See also* troubleshooting
 - dark images 30
 - distorted images 32
 - light images 30
 - nothing prints 28, 31
 - partial printing 30
 - skewed printing 31
 - smearing ink 30
 - stains 32
 - stripes 31

- ink cartridge
 - cleaning 23
 - image problems and 29–32
 - installing 5
 - replacing 22
 - safety instructions 2, 21, 25
 - test page and 8
- installation disks 9–10
- Installer software 9–10
- installing
 - ink cartridge 5
 - printer software 9–10
- interface specifications 33
- interference, radio and television iii
- interior cleaning 24

J

- jams. *See* paper jams

K

- Keep Log of Printer Usage box 19

L

- labels 14, 20. *See also* paper
- landscape orientation (Page Setup) 13
- letterhead 14, 15. *See also* paper
- light images on page 30
- lights 8, 29
- lines on printed page 31
- loading sheet feeder 7, 14–15, 20
- location for printer 3, 34
- locking disks 9
- log files 19
- lubricating printer 21

M

- maintenance 21–24. *See also* troubleshooting
 - cleaning ink cartridge 23
 - cleaning printer 24
 - replacing ink cartridge 22
 - safety instructions 21
- memory
 - background printing and 17
 - font problems and 26

menu commands. *See* commands
menus. *See* File menu
messages, installation 10
modem port
 Chooser problems and 26
 connecting to Macintosh 4, 12
 network printing and 18
MultiFinder 17

N

network printing 11, 18–20
 AppleTalk zones 20
 fonts and 20, 26
 passwords and 18, 20
 troubleshooting 26

O

oiling printer 21
on/off switch 8
opening access door 5, 21, 25
operating environment 3, 34
operating system. *See* system software

Orientation option (Page Setup) 13
outlets, grounded 6
output tray
 opening 7, 15
 paper size and 20

P, Q

page orientation 13
Page Setup command (File menu) 13
Page Setup dialog box 13, 30
Page Size option (Page Setup) 13
paper. *See also* envelopes; labels;
 transparencies
 heavy (thick) 14, 20
 image problems and 30
 legal-size 20
 letterhead 14, 15
 loading 7, 14
 output tray and 20
 recommended 14, 29, 30
 sizes of 33
 specifications 14, 33
 three-hole punched 14, 15
 troubleshooting 27–29
 types to avoid 29

paper feed problems 28
paper jams
 avoiding 21
 clearing 27
 error light and 29
passwords, network 18, 20
peripheral-8 cable 4
physical requirements 3, 34
plugging in printer 6, 21, 25
plugs. *See* cables
portrait orientation (Page Setup) 13
ports
 Chooser problems and 26
 connecting to Macintosh 4, 12
 network printing and 18
 specifications 33
power consumption 34
power cord 6
power light 8
power switch 8
Print command (File menu) 11, 16
Print dialog box 16
 Clean ink cartridge option 23

printer

- choosing in Chooser 12
- cleaning 21, 24, 25
- connecting to Macintosh 4
- location for 3, 34
- logging usage of 19
- lubricating 21
- networks and 11, 18–20, 26
- plugging in 6
- specifications 33–34
- system requirements for 1
- turning on 8
- unplugging 21, 25

printer port

- Chooser problems and 26
- connecting to Macintosh 4, 12
- network printing and 18

printer software installation 9–10

- troubleshooting and 25, 26

printer usage log 19

print head. *See* ink cartridge

printing 16–20. *See also* network printing;

- troubleshooting
- access door and 21, 25
- in background 17
- envelopes 14–15, 20
- from Finder desktop 16
- labels 14, 20
- on legal-size paper 20
- log files 19
- orientation 13
- test page 8
- on transparencies 20
- from within a program 16

Printing Prefs folder 19

problems. *See* troubleshooting

programs, printing from 16

R

- radio interference iii
- random-access memory (RAM). *See* memory
- reducing print size 13
- repair 25
- replacing ink cartridge 22
- resolution specifications 33

S

safety instructions 2–3, 21, 25

Scaling option (Page Setup) 13

serial ports, 33. *See* ports

service and support 21, 25

setting up printer 3–10

- choosing location 3
- connecting to Macintosh 4
- installing ink cartridge 5
- installing printer software 9–10
- loading sheet feeder 7, 14–15, 20
- plugging in printer 6
- turning on printer 8

Setup option (Chooser) 18

shared printers. *See* network printing

Sharing Setup dialog box 18

Share this Printer option 17

sheet feeder

- loading 7, 14–15, 20
- troubleshooting 28, 30

sizes

- of documents 13
- of envelopes 33
- of paper 33

smears on printed page 30

software. *See* application software; printer software; system software

specifications

- paper 14, 33
- printer 33–34
- system 1

speed specifications 33

stains on printed page 31

status lights 8, 29

stripes on printed page 32

StyleWriter II Installation disk 9–10

support 21, 25

switch, on/off 8

system requirements 1

system software

- background printing and 17
- displaying version 8
- required version 1
- upgrading 10

T

technical information. *See* specifications

television interference iii

temperature requirements 3, 34

test page 8

thick paper 14, 20. *See also* paper

three-hole punched paper 14, 15. *See also* paper

transparencies. *See also* paper

- loading 14
- printing on 20

troubleshooting 25–32. *See also*

- maintenance; safety instructions

Chooser 26

distorted images 32

fonts 26

image problems 29–32

ink cartridge 8, 30

lights and 29

network printing 26

nothing prints 28, 31

paper feed problems 28

paper jams 21, 27, 29

partial printing 30

printer software and 25, 26

sheet feeder 28, 30

skewed printing 31

smearing ink 30

stains 32

stripes 31

TrueType fonts 1

turning off printer 21, 25

turning on printer 8

typefaces. *See* fonts

U, V

unplugging printer 21, 25

upgrading

- memory 26
- system software 10

usage logs 19

user groups 10

W, X, Y, Z

wavy printed images 32

weight

- of paper recommended 14, 29, 30
- of printer 34

white lines on page 31

The Apple Publishing System

This Apple manual was written and edited on a desktop publishing system using Apple Macintosh computers. Proof pages were created on Apple LaserWriter printers and on the QMS ColorScript 100 color printer. Final pages were produced in QuarkXPress and output directly to separated film on Linotronic imagesetters. Line art was created with Adobe Illustrator. Cover art was produced with Adobe Photoshop. Screen shots were created and modified with system software, Exposure, and MacPaint 2.0.

Text type is Apple's corporate font, a condensed version of Garamond. Ornaments are ITC Zapf Dingbats® and custom symbols designed for Apple Computer.

PostScript®, the LaserWriter page-description language, was developed by Adobe Systems Incorporated.



Apple Computer, Inc.

20525 Mariani Avenue
Cupertino, California 95014-6299
(408) 996-1010
TLX 171-576

Z030-2637-A
Printed in Ireland