

# CA-Cricket® Graph™



The Graphing  
Product of Choice

For The Macintosh

**COMPUTER  
ASSOCIATES**  
*Software superior by design.*



# CA-Cricket Graph

## For The Macintosh

*The affordable entry into computer graphics for scientists, engineers or business analysts requiring visual analysis of data.*

CA-Cricket Graph has the features and tools that enable you to quickly and easily graph your data and produce high-quality graphics for reports, presentations and data analysis.

### Ease of Use

CA-Cricket Graph has been designed with you, the user, in mind. By working with the graphical interface of the Macintosh and adding a few concepts of our own, you gain the advantage of quick and easy control of the program and the appearance of your graphs. You work interactively with the objects on the screen and immediately see the results.

### Data Access and Manipulation

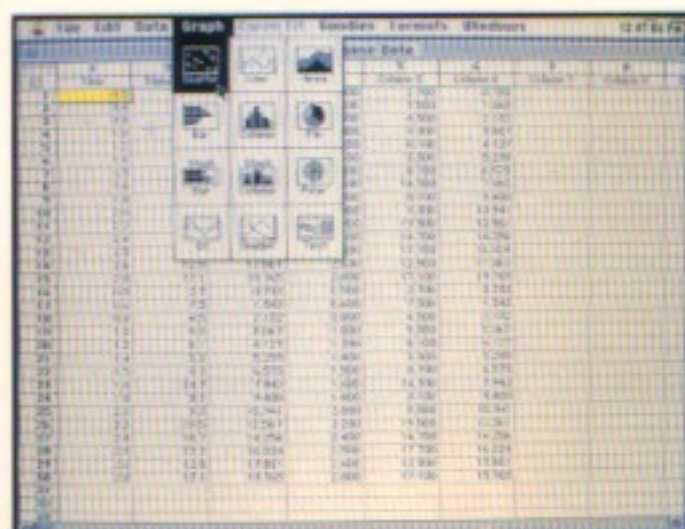
Import and graph data from virtually any source - word processors, databases, spreadsheets or any program that can produce files in TEXT, SYLK, JWKS or WKS formats. You can manage up to 100 columns by 2700 rows of data directly in the program, rearrange data, or generate new data by using basic mathematical operators or more complex trigonometric transforms.

### Multiple Chart Types

Take advantage of the wide selection of graph types: scatter, line, stacked bar, pie, column, text, area, stacked column, double Y axes, bar, polar, quality control and overlay combinations.

### Graph Attributes and Formatting

Customize your graph by selecting from 16 bar patterns, 48 plot symbols, 6 line styles, and 5 line widths. By using formats you can generate any number of graphs from different data sets and get the same attributes such as size, fonts, legends and colors on each.



### Graph Editing

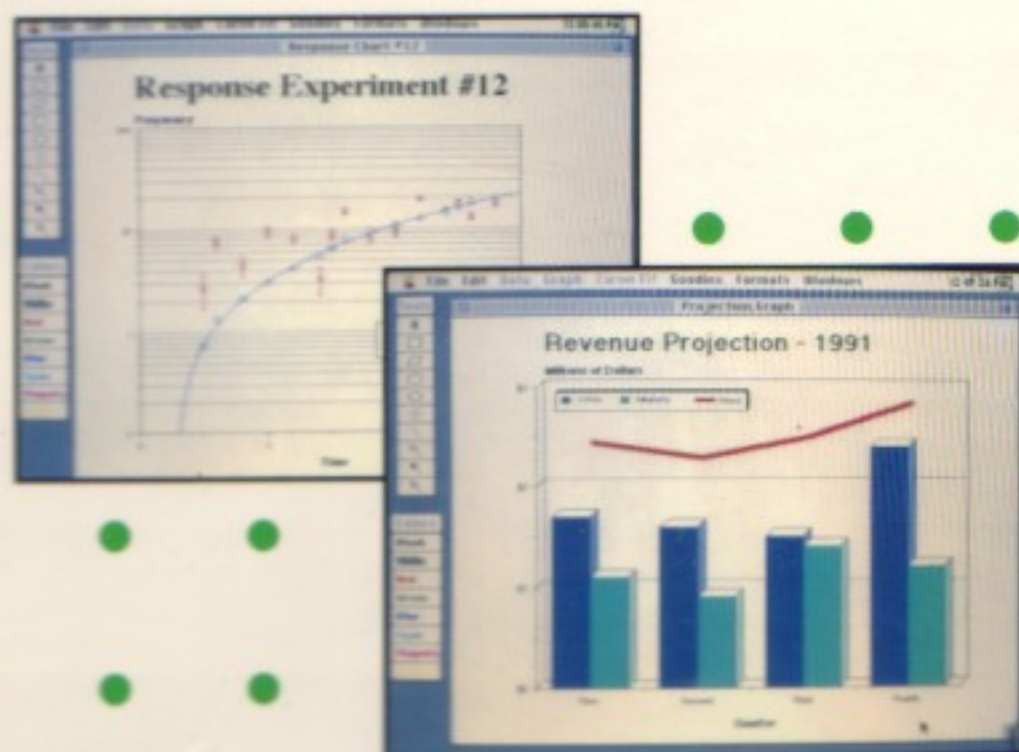
With CA-Cricket Graph you can position, stretch and shrink graphs, apply various regression curve fits, create depth effects, choose colors from a color palette for objects and backgrounds, switch axes, import PICT files and annotate with drawing tools for text, lines, arrows, ovals, diamonds, rhomboids and rectangles - all of which can be done with just a few clicks of the mouse.

### Output

Produce high-quality output, including multiple graphs per page, using any Chooser-selectable driver. You can also export in the PICT format or copy and paste graphs using the Clipboard for integration with other popular applications like word processors, desktop publishing, or presentation software like CA-Cricket Presents.

### System Requirements

CA-Cricket Graph runs on a Macintosh Plus, SE, Classic, SE/30, Portable, LC, or Macintosh II series computer equipped with 1Mb of RAM and an additional floppy or hard disk drive. System 6.0 or higher is required.



**Conditions of Purchase:** This product is subject to the warranty and permitted use limitations set forth in the Computer Associates Registration Card and the Computer Associates License Agreement enclosed in this package.

The product names referenced herein are either trademarks or registered trademarks of their respective companies.

### United States

711 Stewart Ave., Garden City, NY 11530-4787 Telephone: (516) 227-3300

### Canada

1770 Burrard St., Vancouver, B.C. V6J 3G7 Telephone: (604) 733-2343

### Europe

183-187 Bath Road, Slough-Berkshire SL1 4AA, England (0753) 577733

### Far East

55 Lavender St. 8th Floor, Milsons Point, NSW 2061, Australia (02) 923-2066

© 1991 Computer Associates International, Inc.



CA-CRICKET GRAPH FOR MACINTOSH - US



7 23657 00045 1

10-40-111-00001

1040111-87126

1.3.2



*Software superior by design.*

CA-Cricket

Graph  
Version 1.3.2  
Application

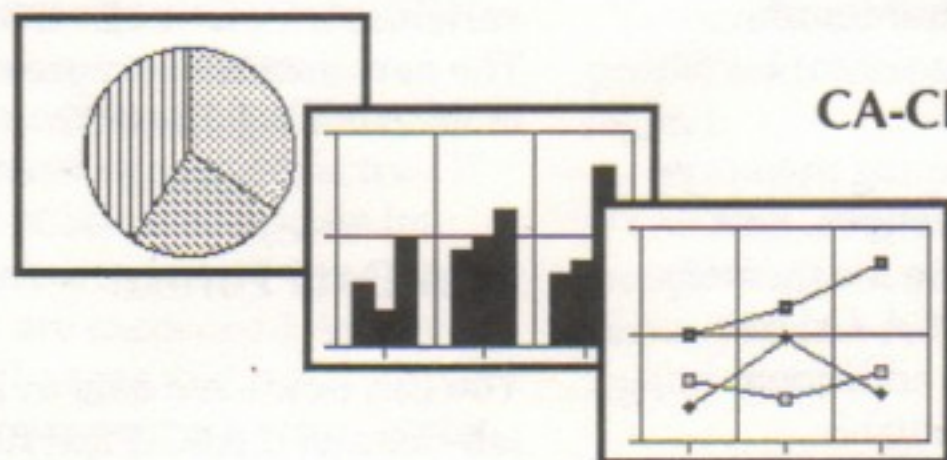
© 1992  
Computer Associates  
International, Inc.  
Printed in U.S.A.

Disk 1 of 1





# RELEASE NOTES:



CA-CRICKET

# *Graph* 1.3.2

## Release Notes

*CA-Cricket Graph™ is now fully compatible with both the Macintosh® IIfx and the new Macintosh Portable. We think you'll find that CA-Cricket Graph 1.3.2 meets all of your graphing needs, and gives you even more graphing power than earlier versions.*

*Note: Since Apple® Computer has recommended that software developers do not include system software with their products, your CA-Cricket Graph 1.3.2 package should contain just the Graph application disk. If you do not have the current version of system software, contact your local authorized Apple dealer.*





## Full Macintosh Compatibility

CA-Cricket Graph 1.3.2 is now compatible with the full line of Macintosh computers. You can run the Graph application on a Macintosh Plus, SE, II, IIfx, or IIfx using system software version 6.0 or higher, or on a Macintosh IIfx or Portable using system software 6.0.4.

## MultiFinder Memory Requirements

When running CA-Cricket Graph 1.3.2 under MultiFinder™, the minimum memory requirement is 768K.

Before performing memory-intensive operations, you should increase the memory allocation for CA-Cricket Graph so that additional memory is available.

For information about allocating memory to applications, see your MultiFinder User's Guide or the user's guide shipped with your Macintosh.

## Extended Precision Variables

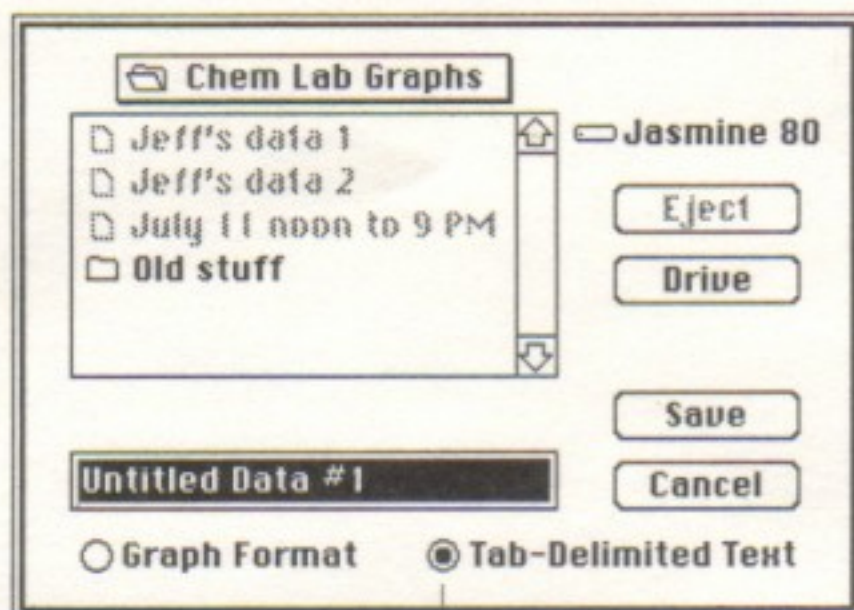
The minimum representable value for extended precision variables is now  $-1.1\text{E}+4931$ . The new maximum representable value is  $1.1\text{E}+4931$ .

## New Data Format

You can now save data as a tab-delimited ASCII text file. The ASCII text format allows you to export data to a variety of applications running on Macintosh computers and other systems such as IBM® PCs and compatibles.

Regardless of the column format (decimal, dollars, or percent), tab-delimited text files are saved in scientific format to preserve the actual numeric data values.

Please note that the StatWorks data format is no longer an option for saving files.



Click here to save data as tab-delimited ASCII text file



## Improved Out-of-Memory Handling

If you run out of memory while using CA-Cricket Graph, you can save changes for all open windows *except* the frontmost window. (Since the frontmost window is active, it is not possible to update its contents accurately if memory limits are exceeded.) After you save changes to the other open windows, you are returned to the Finder.

Before you perform any operation which could be memory-intensive such as a sort, we recommend that you save the frontmost window so you won't lose data if memory limits are exceeded.

If you are using MultiFinder and you run out of memory, you are automatically returned to one of the other applications currently running under MultiFinder.

## Realigning Legend Items

The Legend dialog box now contains a check box labeled "Realign Items" which ensures proper vertical spacing of the legend.

If you have ungrouped a legend and moved legend items, you can realign the legend this way:

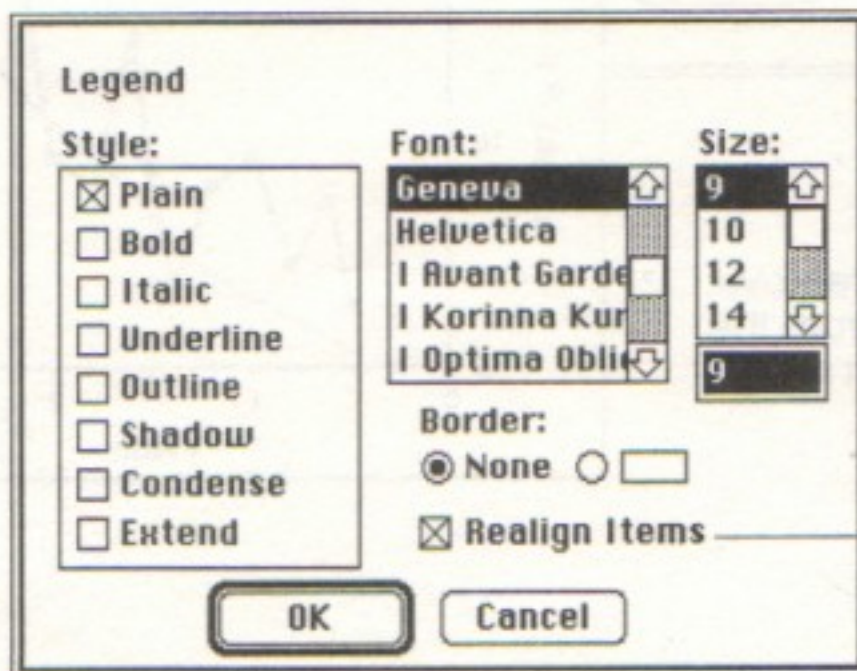
- Regroup the legend items
- Double-click the legend
- When the dialog box appears click the Realign Items check box

The Realign Items option also allows you to correct the line spacing between legend items after you have changed the font size used for the legend.

## Command-W to Close

We've changed the Command-key shortcut for the Close command in the File menu from Command-K to the standard Command-W.

File	
New	⌘N
Open...	⌘O
Close	⌘W
Save Data	⌘S
Save Data As...	
Page Setup...	
Print	⌘P
Plot Setup...	
Plot	
Quit	
	⌘Q



Click here to realign legend items vertically



## New Plot Symbol Option

If you wish, you can plot a data set in a line graph without a plot symbol. The "no plot symbol" option creates graphs that contain only lines.

To remove plot symbols from a data set:

1. Double-click the plot symbol of the data set in the legend.
2. In the dialog box that appears, click the check box labeled "no plot symbol," then click OK. The legend now displays a line symbol (with no plot symbol) for the data set.
3. If you want to use plot symbols again, double-click the line symbol to redisplay the dialog box, then click the "no plot symbol" check box again. Select a plot symbol and click OK.

**Note:** The "no plot symbol" option is available when editing line graphs only.

