

STUFF SPACESAVER

For Macintosh Computers





StuffIt SpaceSaver User's Guide

September 1994

Aladdin Systems, Inc.

165 Westridge Drive

Watsonville, California 95076

Product Manager:	Darryl Lovato
Engineering Lead:	Leonard Rosenthol
Marketing Lead:	Anthony Shore
Customer Advocate:	Thomas Haller
Engineers:	Marshall Clow, Marco Gonzalez, Serge Volkoff
Quality Assurance:	Chris Yeh
Documentation:	Margie Foster

Copyright © 1989-1994 Aladdin Systems, Inc. All Rights Reserved. Magic Menu, StuffIt Expander, StuffIt SpaceSaver, Idle Time Compression, StuffIt, and StuffIt Deluxe are trademarks of Aladdin Systems, Inc. All other product names are trademarks or registered trademarks of their respective holders. Our lawyers are happy.

Product Registration Number _____

"APPLE COMPUTER, INC. ("APPLE") MAKES NO WARRANTIES, EXPRESSED OR IMPLIED, INCLUDING WITHOUT LIMITATION THE IMPLIED WARRANTIES OF MERCHANTABILITY AND FITNESS FOR A PARTICULAR PURPOSE, REGARDING THE APPLE SOFTWARE. APPLE DOES NOT WARRANT, GUARANTEE OR MAKE ANY REPRESENTATIONS REGARDING THE USE OR THE RESULTS OF THE USE OF THE APPLE SOFTWARE IN TERMS OF ITS CORRECTNESS, ACCURACY, RELIABILITY, CURRENTNESS OR OTHERWISE. THE ENTIRE RISK AS TO THE RESULTS AND PERFORMANCE OF THE APPLE SOFTWARE IS ASSUMED BY YOU. THE EXCLUSION OF IMPLIED WARRANTIES IS NOT PERMITTED BY SOME STATES. THE EXCLUSION MAY NOT APPLY TO YOU"

"IN NO EVENT WILL APPLE, ITS DIRECTORS, OFFICERS, EMPLOYEES OR AGENTS BE LIABLE TO YOU FOR ANY CONSEQUENTIAL, INCIDENTAL OR SPECIAL DAMAGES (INCLUDING DAMAGES FOR LOSS OF BUSINESS PROFITS, BUSINESS INTERRUPTION, LOSS OF BUSINESS INFORMATION, AND THE LIKE) ARISING OUT OF THE USE OR INABILITY TO USE THE APPLE SOFTWARE EVEN IF APPLE HAS BEEN ADVISED OF THE POSSIBILITY OF SUCH DAMAGES. BECAUSE SOME STATES DO NOT ALLOW THE EXCLUSION OR LIMITATION OF LIABILITY FOR CONSEQUENTIAL OR INCIDENTAL DAMAGES, THE ABOVE LIMITATIONS MAY NOT APPLY TO YOU. Apple's liability to you for actual damages from any cause whatsoever, and regardless of the form of the action (whether in contract, tort (including negligence), product liability or otherwise), will be limited to \$50."

Colophon

The type used is ITC Century Condensed and Zapf Dingbats. Text and graphics were generated using FrameMaker and pages were proofed using an Apple LaserWriter IIx. Final pages were generated on a Linotronic 200P.

Table of Contents

Chapter 1: Introduction.....	1
What's New in this Version?	1
User's Guide Conventions	2
Chapter 2: Installation.....	3
Requirements.....	3
Installing SpaceSaver.....	3
Custom Installation.....	6
Magic Menu Control Panel	7
Drag and Drop Applications	7
Read Us First Files	7
Where is SpaceSaver Installed?	7
Balloon Help.....	7
Where To Go From Here	8
Chapter 3: Easy Compression.....	9
Example: Name-Based Compression	10
Example: Label-Based Compression	11
Example: Compressing with Magic Menu	13
Example: DropCompress	14
Where To Go From Here	14
Chapter 4: Advanced Compression.....	15
Example: Compressing Your Hard Disk	15
Results of Disk-Wide Compression	17
Where To Go From Here	18
Chapter 5: SpaceSaver Reference	19
The SpaceSaver Control Panel.....	19
Idle Time Settings	20
Don't Compress	25
The SpaceSaver Menu.....	27
Where To Go From Here	28
Chapter 6: Magic Menu.....	29
Expand.....	30
Stuff.....	30
Make Self-Extracting.....	31

Preferences	32
SpaceSaver Compress	35
SpaceSaver Info	35
About Magic Menu... ..	36
Where To Go From Here	36
Chapter 7: Expanding Items.....	37
Introduction.....	37
Example: Expanding with Magic Menu.....	37
Example: Using StuffIt Expander	38
Chapter 8: DropStuff and DropCompress	43
Example: Using DropStuff	43
Example: Using DropCompress.....	44
Where To Go From Here	46
Appendix A: Tech Talk.....	47
Compression: Saving Space on Disk	47
Archiving: The Basics of Combining Files and Folders	48
SpaceSaver Compression	48
Idle Time Compression	49
Other Compression Programs	50
Appendix B: Common Questions (and Answers!)	51
Appendix C: Upgrading to StuffIt Deluxe	55
StuffIt Deluxe.....	55
How to Get StuffIt Deluxe.....	56
Index.....	57

Chapter 1: Introduction

Welcome to StuffIt SpaceSaver™, the easy-to-use compression software from Aladdin Systems. SpaceSaver helps you save space on your hard disk by compressing files and folders and allowing you to use those files as if they were not compressed. With SpaceSaver, compression can occur selectively at your command or automatically while your computer is not being used.

The main components included in the SpaceSaver package—StuffIt SpaceSaver, Magic Menu, StuffIt Expander, DropCompress, DropStuff, and the StuffIt Engine—work together to give you the ability to compress and expand files, right in the Finder. All of these also belong to the StuffIt family of products that includes the StuffIt Deluxe application—a standard in the industry for file compression and archiving.

What's the Difference between SpaceSaver and StuffIt Deluxe?

SpaceSaver is a hard disk space-saving product. It keeps the files on your hard disk compressed until you use them, thus saving valuable disk space. Your SpaceSaver-compressed files look and act completely normal. SpaceSaver automatically expands the files when they are opened, and recompresses them after they are closed. SpaceSaver is a standalone product, and it is also included in the StuffIt Deluxe package of utilities. This User's Guide is mostly about SpaceSaver.

StuffIt Deluxe is an archiving-compression application, and also the name of an entire package of utilities. The archiving application, StuffIt Deluxe, emphasizes maximum compression for files and folders that are leaving your machine, such as over a network or modem, or onto removable media such as floppy disks or cartridges. If you have purchased the standalone SpaceSaver package, we only give you rudimentary archiving abilities through Magic Menu.

See Appendix A: Tech Talk for more information on compression and archiving.

What's New in this Version?

SpaceSaver has been rewritten to run at accelerated speed when running on a Power Macintosh. The compression algorithm used by SpaceSaver has been

redesigned to compress files much smaller than previous versions. The interface has been redesigned to make SpaceSaver even easier to use.

Magic Menu, a menu that appears just after the Special menu in the Finder, has a new look for ease of use, and new features such as the ability to expand more formats (which is provided by the StuffIt Engine). See Chapter 6: Magic Menu for full details.

StuffIt Expander gives you the ability to perform expansion of many formats with “drag and drop” ease. See Chapter 7: Expanding Items for full details.

DropStuff is a System-7 only application that lets you drag a file or folder onto its icon to immediately Stuff the file or folder into an archive. DropCompress is a System 7-only application that lets you drag a file or folder onto its icon to immediately SpaceSaver-compress that item. See Chapter 8: DropStuff and DropCompress.

The StuffIt Engine is a special file that resides in the Extensions folder of your System folder. It is the nuts and bolts behind what makes many of the StuffIt family of products work. The StuffIt Engine works like your car engine—you know it's working because your car is working, but you don't see it.

User's Guide Conventions

This User's Guide assumes that you know how to operate the Macintosh and are familiar with basic Macintosh terminology such as point, click, drag, and the Finder. If you aren't familiar with these terms, you should refer to the Macintosh User's Guide to learn the basic operations of using the Macintosh.

In addition, several conventions are used throughout this User's Guide:

- Numbered items are steps that you must follow to complete a procedure.
- Alternate methods for completing a procedure are marked with a square.

Note: Text that appears like this is a note containing some additional information that may be of use to some users.

Chapter 2: Installation

Requirements

SpaceSaver operates on any Macintosh family computer provided you have at least four megabytes of memory. (However, the more memory you have, the more efficiently SpaceSaver works.) A hard drive is also required.

Although SpaceSaver is compatible with System 6.0.5 or later, we recommend that you use the latest System and Finder available from Apple Computer, Inc., provided by your local dealer. SpaceSaver is fully compatible with all releases of System 7.

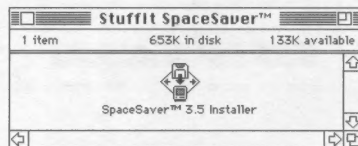
Installing SpaceSaver

Before you install SpaceSaver, you should make a copy of your SpaceSaver program disk, store the original in a safe place, and use the copy to install SpaceSaver on your hard disk. We also suggest that you take a few moments to complete the registration card and send it to Aladdin Systems (the postage is paid). If you register, we can notify you of upgrades and new products.

Note: Please see the Read Me file for last minute information on registering.

This section explains how to install the standalone version of SpaceSaver. See the StuffIt Deluxe manual to install SpaceSaver as part of the StuffIt Deluxe installation.

1. Insert the StuffIt SpaceSaver disk into your Macintosh.
2. Double-click the SpaceSaver Installer icon.



3. A splash screen appears. Click Continue.

A Welcome dialog box appears. This dialog box contains last-minute changes and other important information.

4. Click Continue when you have finished reading the information.

(You can save or print this information by clicking the appropriate button.)

The Standard install dialog box appears after you click Continue.



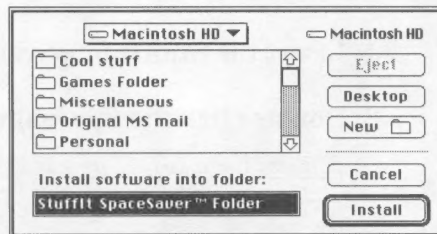
5. Click "Install" to continue.

If you want to install specific parts of the SpaceSaver package, click "Custom." See the "Custom Installation" section following.

A dialog box appears informing you that you must restart your Macintosh after installation. If your machine is not in a situation where this is OK, click Cancel to halt the installation process.

6. Click "Yes" to continue installation.

A dialog box appears that lets you choose where to install the software.



7. Click "Install" if the default folder "StuffIt SpaceSaver Folder" and hard disk are acceptable.

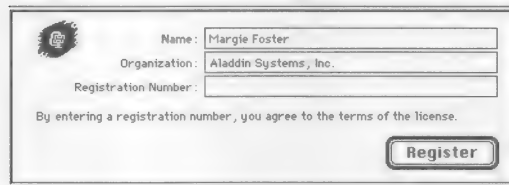
Otherwise, you can create a new folder, navigate to another volume to install onto, or quit the installation process.

The progress dialog box appears.



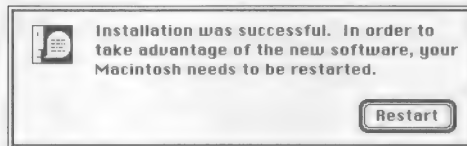
8. When the installation is finished, a dialog box appears asking you to register this copy of SpaceSaver.

Enter your name, company name (skip if not applicable by pressing the Tab key), and the registration number. The registration number can be found on the registration card.

A registration dialog box with a "Register" button. It contains fields for Name, Organization, and Registration Number. The text "By entering a registration number, you agree to the terms of the license." is displayed below the fields.

9. Click Register when you have finished entering the information.

The following dialog box appears.



10. Click the "Restart" button to complete the installation process.

As your Macintosh restarts, the Magic Menu and SpaceSaver icons should appear along the bottom of your screen. If they do not, check the Control Panels folder to see if they are there. If not, run the Install program again.



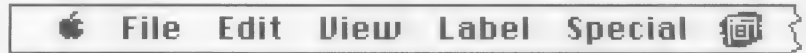
Magic Menu icon



SpaceSaver icon

Note: If you are using an Extensions manager such as Startup Manager™ (from Now Software, Inc.), you may need to configure it to include SpaceSaver and Magic Menu. If you are not familiar with the process, consult its manual for how this is done.

One immediate difference you'll find is that the Magic Menu appears immediately after the Special menu in the Finder's menu bar.



Note: If you are running System 6 on a Macintosh that is not capable of displaying color, the word "Magic" appears in the Finder's menu bar, instead of the Magic Menu icon shown in this manual.

11. You have finished the installation process. Go to Chapter 3: Easy Compression.

Custom Installation

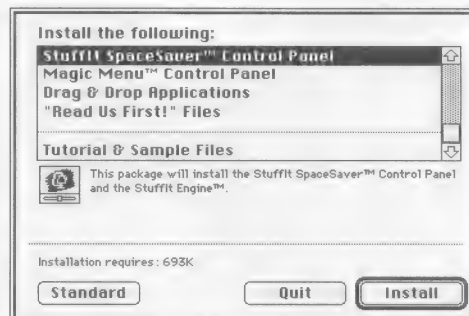
If you want to select specific items to install, follow the steps below. If you haven't done so already, make a copy of the SpaceSaver disk, store the original in a safe place, and use the copy to install.

This section explains how to do a custom install of the standalone version of SpaceSaver. If you have the StuffIt Deluxe package, see the StuffIt Deluxe manual to install SpaceSaver as part of the StuffIt Deluxe installation.

1. Follow steps 1 through 4 in the previous section.

2. Click "Custom" to begin selection for a custom install.

The custom installation dialog box appears, with a list showing the files available for installation.



StuffIt SpaceSaver Control Panel

This installs the SpaceSaver control panel and the StuffIt Engine into your System Folder.

Magic Menu Control Panel

This installs the Magic Menu control panel, compression and mail extensions, and the StuffIt Engine into your System Folder.

Drag and Drop Applications

This installs StuffIt Expander and the StuffIt Engine, which work with System 6 or System 7. This option also installs DropStuff and DropCompress, which both require System 7. The aliases to these two “drop” applications and an alias to StuffIt Expander are automatically placed on your desktop.

Note: The StuffIt Engine is always installed in your System Folder because it is used by the entire StuffIt family of products.

Read Us First Files

This installs various text files that contain important last-minute information and additions to the User's Guide.

3. Scroll through the list of items and Shift-click the ones you want to install.

As you choose items, their names appear at the lower-left portion of the dialog box. If you select only one item, a description of it appears.

4. Follow steps 5 through 11 in the Standard Installation section.

Where is SpaceSaver Installed?

The SpaceSaver Installer places files and folders in two locations: the SpaceSaver folder and your System Folder.

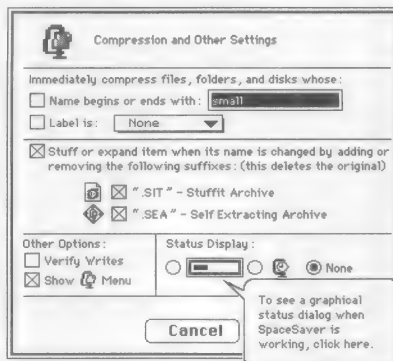
The SpaceSaver folder contains DropStuff, DropCompress, StuffIt Expander and all “Read Me” or Tutorial documents. Your System Folder contains the SpaceSaver and Magic Menu control panels, the Aladdin folder, and the StuffIt Engine.

If you would like to know exactly where every file is placed, see the text file “What was installed (and where)” in the Read Us First folder, inside the SpaceSaver folder.

Balloon Help

We make it possible for you to get online assistance whenever you need it. Using System 7's Balloon Help, you'll find that help is available for menu commands and descriptions of the contents of dialog boxes. Balloon Help can

be turned on and off from the Help menu in the upper right corner of your screen.



If you find that help balloons don't answer all your questions, you'll usually find the answer here in the User's Guide. If all else fails, our Technical Support Group is available to answer your specific questions. See Appendix B: Common Questions and Answers for details.

Note: Balloon help is available only to System 7 users.

Where To Go From Here

The most popular method of using SpaceSaver—name-based compression—is already turned on and waiting for you to use the keyword “small.” You’re now ready to begin using SpaceSaver as described in the next chapter. Later, you’ll learn how to turn on some of its advanced features.

Chapter 3: Easy Compression

SpaceSaver has five separate methods for compressing the data on your disk:

- **Name-based.** You can add a specific word to the names of your files and folders to alert SpaceSaver to immediately compress or never compress that item. SpaceSaver ships with two default keywords, one to designate files and folders for compression and the other to designate files and folders to never compress. The default keywords can be easily changed.
- **Label-based.** You can apply a label to any file, folder, or disk, and then tell SpaceSaver to compress (or not) those items with a particular label. (This feature is not available for System 6 users.)

Note: The above two methods physically “mark” a compressed item by the very act of adding a keyword or label to the item. This is an easy way to see at a glance what is SpaceSaver-compressed on your hard disk.

- **Magic Menu Compress.** You can immediately compress files and folders by selecting them, then choosing “SpaceSaver Compress” from the Magic Menu in the Finder. This does the same thing as name-based compression, but does not mark the folder or file.
- **DropCompress.** Select a file or folder and drag it to the DropCompress icon. The item is compressed immediately. (DropCompress is available for System 7 only.)
- **Date-modified compression.** This method scans the hard disk(s) you select, looking for files to compress that are older than the date modified that you set. It performs the compression whenever your Macintosh is on but not being used, in much the same way a screen saver does.

Most of our users have found the name-based and label-based compression methods to be the easiest to configure and use. They compress immediately and leave the items “marked” as SpaceSaver-compressed. The Magic Menu

“SpaceSaver Compress” command and DropCompress also do immediate compression, but do not “mark” the files.

Our date-modified compression method is more complex and is discussed in the next chapter.

Example: Name-Based Compression

Compressing your files and folders using the name-based compression method gives you complete control over what gets compressed and what doesn't. You can use the two default keywords that SpaceSaver recognizes, or you can define your own keywords (see Chapter 5: SpaceSaver Reference for details on how to do this).

The two default keywords are “small” and “big.” Attaching the word “small” to a file, folder, or disk name instructs SpaceSaver to compress that file, or the contents of the folder or disk. If you attach a compress keyword to a disk or folder, everything contained on that disk or in that folder gets compressed.

Attaching the word “big” to a file, folder, or disk name instructs SpaceSaver to never compress that item. If you attach a never compress keyword to a disk or folder, nothing contained on that disk or in that folder will ever be SpaceSaver-compressed.

The keyword must always be either at the beginning or the end of the file name.

Note: The never compress keyword “big” (or the one you designate) always takes precedence over any of the compression methods. Also, if the files or folder were already SpaceSaver-compressed before you apply the “big” keyword, they are immediately expanded.

1. Select the folder you want to compress in the Finder by clicking its name. The name is then ready for editing.
2. Position the cursor at the beginning (or end) of the name and type the keyword “small.”



3. Click in the white space outside the icon (or press Return).



As SpaceSaver compresses the folder, the status indicator shows you that SpaceSaver is hard at work. When the cursor returns to an arrow, you'll know that SpaceSaver has completed its task.

Note: A spinning StuffIt watch cursor is the default SpaceSaver compression status indicator. See Chapter 5: SpaceSaver Preferences, for details on changing it.

SpaceSaver automatically compresses and expands each file or folder you drag into or out of a “small” folder. This is an easy way to save disk space by simply adding the keyword to one folder.

You can now use these compressed files as you did before you compressed them. Double-clicking them in the Finder opens them, as does opening them directly from an application—SpaceSaver automatically decompresses the file.

Example: Label-Based Compression

You can use a Finder label to identify the items you want SpaceSaver to compress. This is an easy way to SpaceSaver-compress one or more folders or files without having to manually add a keyword to each. The Finder lets you apply a label to any file, folder, or disk. The fastest and easiest way to use the label feature is with folders. (Using labels is not available for System 6 users.)

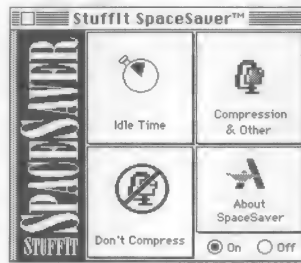
The first thing you need to do is configure SpaceSaver for the labels you want to use to indicate the items you want to compress.

1. Choose “Control Panels” from the Apple menu.

You can also choose “Open control panel” from the SpaceSaver menu in the Finder. If you do this, skip step 2.

2. Locate and double-click the SpaceSaver icon.

3. Click “Compression & Other” in the SpaceSaver control panel.



4. Click the “Label is:” check box in the “Compress files whose:” section of the dialog box that appears.

(Ignore the other settings in this dialog box for now. Each is described in detail in Chapter 5: SpaceSaver Reference.)



5. Select the label you want to use from the pop-up menu.

Pick a color, then use that color to “mark” things to be SpaceSaver-compressed.

Although SpaceSaver does not “care” about the name of the label, it might be helpful if the name helps you remember what color does what. The name does not have to be small or big, as in the name-based compression. You can change the name of a label by using the Labels control panel.

6. Click OK, and close the control panel.

7. In the Finder, select the folders you want to compress.

8. Choose the label (the one you designated as the compression label earlier) from the Label menu in the Finder.

All the selected folders now have that label.

SpaceSaver immediately starts to compress these folders. Remember, everything inside that folder gets compressed, including other folders.



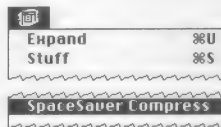
As SpaceSaver compresses the folders, the status indicator shows you that SpaceSaver is working. When the cursor returns to its previous state, you'll know that SpaceSaver has completed its task.

You can now use these compressed files as you did before you compressed them. Double-clicking them in the Finder opens them, as does opening them directly from an application—SpaceSaver automatically decompresses the file.

Example: Compressing with Magic Menu

This section describes how to use Magic Menu in the Finder to SpaceSaver-compress selected files and folders.

- 1. Select the files and folder(s) you want to compress by clicking each in the Finder. (Shift-click for multiple selections.)**
- 2. Choose “SpaceSaver Compress” from the Magic Menu.**



The items you selected are immediately compressed.



As SpaceSaver compresses the items, the status indicator shows you that SpaceSaver is working. When the cursor returns to its previous state, you'll know that SpaceSaver has completed its task.

You can now use these compressed files as you did before you compressed them. Double-clicking them in the Finder opens them, as does opening them directly from an application—SpaceSaver automatically decompresses the file.

SpaceSaver will never compress your System Folder, or any items inside folders inside your System Folder.

Note: Because the Magic Menu command “SpaceSaver Compress” does not “mark” files or folders after compression, only those files and folders that are in the folder at the time of compression are compressed. Subsequent files and folders placed into that compressed folder are not automatically compressed because they are not “marked” for compression.

Example: DropCompress

This section explains the DropCompress “Drop Box.” Drop Boxes are used with System 7 only. A Drop Box is a small application that is able to perform tasks by dragging and dropping items onto them. Since only System 7 supports drag and drop features, Drop Boxes cannot work for System 6 users.

DropCompress is very easy to use. You can use it within the Drag and Drop Applications folder, or you can use the alias of DropCompress that the SpaceSaver installation program placed on your desktop.

- **From the Finder, select the file you want to compress and drag it on top of the DropCompress icon on the desktop. When the DropCompress icon highlights, release the mouse button.**



DropCompress compresses the file in place. If you compress a folder using DropCompress, only those files and folders that are in the folder at the time of compression are compressed. Subsequent files and folders placed into that compressed folder are not automatically compressed.

You can now use a compressed file (or folder) as you did before you compressed it. Double-clicking a compressed file the Finder opens it, as does opening it directly from an application—SpaceSaver automatically decompresses the file.

Where To Go From Here

The next chapter explains how to compress entire disks when your computer is not being used. This method performs disk-wide compression based on date modified, and we call it Idle Time Compression™.

Chapter 4: Advanced Compression

Idle Time Compression™, a powerful feature of SpaceSaver, runs a disk-wide compression based on file modification date whenever your Macintosh is on but not in use. SpaceSaver interprets idle time to mean no mouse, keyboard, or serial port activity. It activates when the machine is not doing anything, much like a screen saver.

During idle time, SpaceSaver scans the disk(s) you specify looking for files that are old enough to compress. If SpaceSaver finds a file old enough, it automatically compresses it. If you have a file or folder you do not want SpaceSaver-compressed, you can use the never compress keyword or label, as discussed in the previous chapter.

If SpaceSaver is in the process of compressing a file when you move the mouse or hit a key, it immediately stops so you regain control of your computer. It resumes idle-time compression only when your computer is idle again for the specified amount of time.

Note: If a Macintosh Portable, PowerBook, or PowerBook Duo is running off battery power, Idle Time Compression does not run in the background. This is done to prevent draining the battery. Once the computer is plugged in, the automatic compression features of SpaceSaver are active again.

Example: Compressing Your Hard Disk

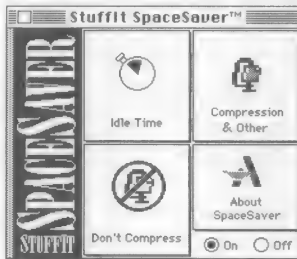
This section explains the disk-wide SpaceSaver-compression that is done to files and folders based on their modification date. This compression occurs when your Macintosh has been idle for the amount of time that you specify.

1. Choose “Control Panels” from the Apple menu.

You can also choose “Open control panel” from the SpaceSaver menu in the Finder. If you do this, skip step 2.

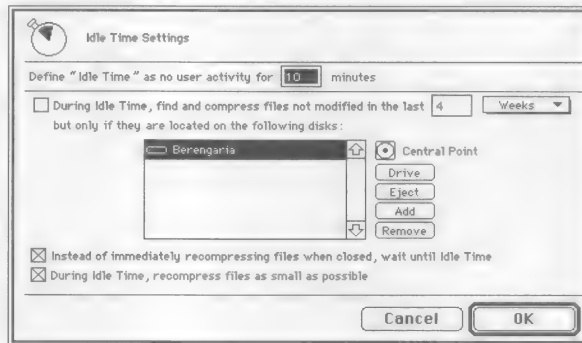
2. Locate and double-click the SpaceSaver icon.

Note: This example guides you using System 7. If you are using System 6, locate SpaceSaver in the scrolling list and click its icon.



3. When the SpaceSaver control panel appears, click the “Idle Time” button.

A dialog box appears with the options you can set for Idle Time.



4. Click the “During Idle Time, find and compress files...” check box.

This option controls whether disk-wide scanning based on date modified is on or off. This check box has no effect on compression done using the Magic Menu, DropCompress, name and label-based compression, or the other two idle time options shown in the illustration.

5. From the pop-up menu, choose how old you want the files to be before they are compressed.

The acceptable values range from one day to one year. The files must be older than the setting you choose here before SpaceSaver compresses them. For example, if you choose two weeks, SpaceSaver does not consider a file “old enough” until it is more than two weeks old.

6. Add one or more volumes to the list by clicking the “Drive” button until the volume’s name appears.

This option lets you add or remove disk names from a list of those volumes targeted for date-modified compression.

It is important that you add at least one volume to this list, so that SpaceSaver knows what volume to scan for old files.

7. Click “Add.”

Note: You can also specify individual files or folders on each disk that you never want SpaceSaver to compress. This can either be done with a “big” keyword or a specified Finder label. See Chapter 3: Easy Compression.

8. Click OK.

Disk-wide compression based on modification date is now activated on the volume(s) you’ve chosen and compression begins when your computer has been idle for the specified amount of time.

Results of Disk-Wide Compression

If you leave your Macintosh on overnight, you should return to see a large amount of disk space available on your hard disk. However, there are a few limitations that you should know in case you find SpaceSaver has not released as much hard disk space as you had hoped.

A screen saver can significantly slow down SpaceSaver, especially the very first time disk-wide compression is used. To optimize first-time disk-wide compression process, disable your screen saver.

An active serial port prevents SpaceSaver from performing idle-time compression. (If your Macintosh is connected to an AppleTalk network, this does not prevent SpaceSaver from scanning and compressing.)

Since you can never really be sure when SpaceSaver is done, you might still have a lot of eligible files to compress. How many files on the specified hard disk are old enough? How large is your hard disk? A huge hard disk with lots of eligible files can take a long time to compress. The speed of your machine plays an important role also. Compressing files on a Power Macintosh is much faster than compressing the same files on a Macintosh IIfx.

You can’t tell if a file is compressed just by looking at it (unless the file was compressed with the name or label-based compression methods). You can select a file and choose the “SpaceSaver Info” from the Magic Menu to see if it is a SpaceSaver-compressed file.

There are two ways to immediately recompress a file that was originally compressed with the date-modified method. Use the “SpaceSaver Compress”

command from the Magic Menu, or DropCompress. Otherwise, SpaceSaver will compress it again the next time you leave your machine idle long enough.

Since most applications are never modified, they get SpaceSaver-compressed. You might want to use a never compress label on applications you use frequently.

Because of these limitations, many users prefer the name and label-based compression methods.

Where To Go From Here

The next chapter describes the SpaceSaver commands and options in more detail.

Chapter 5: SpaceSaver Reference

SpaceSaver has many preferences that help you configure and use SpaceSaver better. SpaceSaver preferences are set through the SpaceSaver control panel.

The SpaceSaver Control Panel

When you install the software, certain preferences are preset to make it easier for you to get up and running. You can change these preferences to better use and customize SpaceSaver.

1. Pull down the Apple menu and choose “Control Panels.”

You can also choose “Open control panel” from the SpaceSaver menu in the Finder. If you do this, skip step 2.

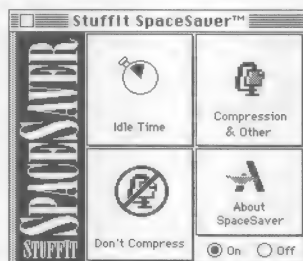


2. Locate and double-click the StuffIt SpaceSaver icon.



Note: This example guides you using System 7. If you are using System 6, locate SpaceSaver in the scrolling list and click its icon.

The SpaceSaver control panel appears.

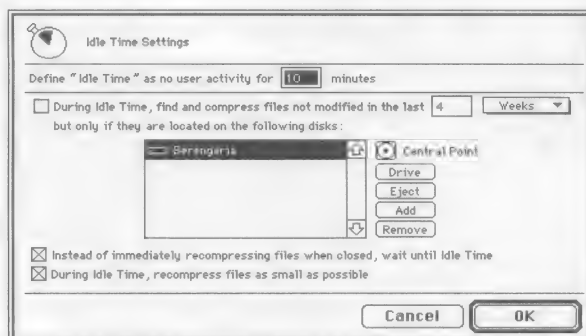


SpaceSaver On/Off

The most important preference is whether SpaceSaver is on or off. Unless you want to disable SpaceSaver, leave the “On” button selected.

Idle Time Settings

At the top left of the SpaceSaver control panel is the “Idle Time” button. When you click this button, you’ll be able to set all Idle Time options.



Define “Idle Time as...”

This is a text box where you can type the amount of time your computer is idle before SpaceSaver begins scanning your hard disk, looking for files old enough to compress. The smallest amount of time is one minute.

During Idle Time, find and compress files...

This check box lets you set how old files must be before they are compressed. The acceptable values range from one day to one year. The files must be older than the setting you choose here before SpaceSaver compresses them. For example, if you choose two weeks, SpaceSaver does not consider them “old enough” until they are more than two weeks old.

This is also where you instruct SpaceSaver to scan the entire volume(s) you specify for files to compress based on their modification date.

You must add at least one volume to this list, so that SpaceSaver knows which volumes to scan for files to compress. You can use the “Remove” button to remove disks from the list.

Note: You can also specify individual files or folders on each disk that you never want SpaceSaver to compress. This can either be done with a “big” keyword or a specified Finder label. See Chapter 3: Easy Compression for details.

Instead of immediately recompressing files...

This option instructs SpaceSaver to either recompress files immediately when they are closed, or delay recompressing them until your computer is idle. This option affects only those files that were originally compressed using name and label-based compression.

When SpaceSaver is first installed, this check box is on. This lets SpaceSaver work faster because SpaceSaver delays recompression of files until you are done working with those files, and the computer is idle. At idle time, SpaceSaver will recompress files on all mounted volumes.

System 7 users who need to reclaim some disk space immediately can use the “Recompress Now” option from the SpaceSaver Menu to have recently used files recompressed. See “The SpaceSaver Menu” section later in this chapter.

If you want your files to be recompressed as soon as you finish working with them, turn off this check box.

Note: If this option is on, but your machine never goes into idle time (perhaps because you turn the machine off as soon as you’re done using it), the files will not get recompressed.

During Idle Time, recompress files as small...

This check box, when on, instructs SpaceSaver to scan all local mounted volumes for SpaceSaver-compressed items that can be converted to the new, smaller idle-time compression algorithm. This includes items compressed with earlier versions of SpaceSaver.

Note: SpaceSaver uses two compression algorithms: idle-time and quick-compression. When you compress an item with Magic Menu, DropCompress, keyword, or label, SpaceSaver uses the quick-compression method, so you don't have to wait to use your machine. The idle-time algorithm, on the other hand, takes time to accomplish the smallest, tightest compression. By leaving this option on, you can further compress your quick-compression items to the more tightly-compressed algorithm during idle time.

More about Idle Time Compression

There are a few things to keep in mind when you use the disk-wide compression based on modification date method.

Once a file has been compressed by this method, SpaceSaver “forgets” about the file. This means if you open and change a date-modified SpaceSaver-compressed file, it does not automatically recompress when you close it. Since you changed the file, the modification date of the file has changed, so it won't be recompressed by SpaceSaver until it has again aged the amount of time you specified.

Note: Since most application programs are never “modified,” and may meet the appropriate date modified setting, they can efficiently be compressed by this method, regardless of age or length of time since they were last accessed or launched.

Compression Preferences

Next to the “Idle Time” button is the “Compression & Other” button. Click this button to display a dialog box that lets you set preferences such as compression methods, keywords, and status displays.

These compression options set the preferences for the compression methods described in Chapter 3: Easy Compression. This includes keywords and labels.



Compress files whose: Name begins or ends with...

SpaceSaver doesn't have to use the default keyword “small.” You can define your own keyword or label that identifies an item to be compressed.

You can use almost any word you want by changing the text after “Name begins or ends with:” Once changed, attaching this new keyword to any file, folder or disk name immediately compresses that item. This allows you to compress specific files on command, rather than waiting for disk-wide compression based on date modified to compress them later.

The keyword can be at the beginning or end of the file, folder, or disk name. If you use a long file name, a suffix might not always be visible, so using the keyword at the beginning of the name is more useful.

A keyword can consist of between one and fifteen alphanumeric characters (letters, numbers, punctuation marks or anything you can type on the keyboard), though it is recommended that you keep it short. Some alternative keywords you might want to use are “:”, “>”, “<”, or “•.” One character you cannot use is a colon (“:”).

Note: There are two “reserved keywords” that cannot be used. These are reserved for creating archives:

- “.sit” keywords are reserved for StuffIt archives.
- “.sea” keywords are reserved for self extracting archives.

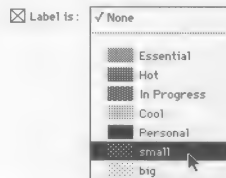
These keywords are discussed later in this chapter.

After you set a new “Compress” keyword, all files that had the old keyword stay compressed until the next time each is used, at which point SpaceSaver decompresses it. However, if the file retains the old keyword, SpaceSaver will not compress that file, unless it meets other SpaceSaver criteria for compressing (label or date modified).

Compress files whose Label is...

An alternate way to compress files beyond keywords and the Magic Menu is to use Finder labels, which are available in System 7 only. The Macintosh Finder allows you to apply a label to any file, folder, or disk. To use labels, you must first turn on this feature and then choose a label.

The name of the label means nothing to SpaceSaver. SpaceSaver looks at the label’s position in the list (1 through 7). However, you can assign a name and color to the label you choose just to make it easy to tell what items you want compressed.



See Chapter 3: Easy Compression for step-by-step instructions for using label-based compression.

Special Keywords: “.sea” and “.sit”

When SpaceSaver is on, you can easily create StuffIt Deluxe archives and self-extracting archives by adding the appropriate suffix to the file or folder name in the Finder. For example, if you have a folder called “Documents,” you can create a self-extracting archive by simply adding “.sea” to the name, as in “Documents.sea.”

Conversely, you can immediately expand any StuffIt archive or self-extracting file by removing the suffix from the name in the Finder.

Warning: If you add or remove the suffix to any file or folder name, the original file or folder is deleted.

Verify Writes

When this option is on, SpaceSaver verifies each file during reading and writing. This verification double-checks that the file written during a compression or decompression operation is precisely the same file that was read from disk. If the file is not identical, an error dialog box appears telling you that the file could not be verified. This option adds extra time to the compression or decompression process, but is an extra measure of security if you are concerned about the integrity of your data.

The default setting is off. In most cases it is not necessary to use it, unless you are concerned about the reliability of one or more of your hard disks.

Show Menu

Below the “Verify writes” check box is the “Show Menu” check box (for System 7 only). When on, the SpaceSaver Menu appears in the Finder at the right side of the menu bar.



SpaceSaver Menu icon

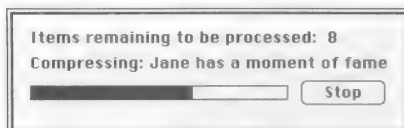
The menu displays common SpaceSaver commands for quick access. The SpaceSaver Menu, like System 7’s Balloon Help menu, is available in every application. The default for this option is on. See “The SpaceSaver Menu” later in this chapter.

Status Display

Immediately to the right of the “Other Options” area are the “Status display” buttons for selecting which status indicator to use. This indicator appears whenever SpaceSaver is actively scanning your disk, compressing, or expanding files. You have three choices: a progress dialog box, an animated StuffIt watch cursor, or none.

Progress Dialog

This is the progress dialog box of an item being compressed or decompressed.



Although this option slows down SpaceSaver a bit, it is the most informative of the progress indicators since it shows how much has been completed and how much remains to be completed. The progress dialog box does not appear until a few seconds after the process has begun. If you like to know exactly what file SpaceSaver is compressing, and how far along it is in the process, this is the indicator to use.

Animated StuffIt Watch Cursor

This is the animated StuffIt watch cursor whose watch spins when you're compressing or decompressing any item. (The watch hands spin one way during compression and the other way during decompression.)



It is the default setting when you install the software. This option is useful for quietly telling you when SpaceSaver is working.

Note: When SpaceSaver is actively scanning your specified volumes for files to compress, a blackened StuffIt watch cursor appears, regardless of the progress indicator you have chosen. Once active compression or expansion takes place, the status indicator you chose appears.

None

No progress indicator is displayed when you compress or decompress an item. Since all you'll see is the standard Macintosh watch cursor, you won't know that SpaceSaver is actively working.

Don't Compress

Below the "Idle Time" button is the "Don't Compress" button. Click this button to display a dialog box that lets you set preferences for items you never want to compress.

The ability to select individual items to never compress is a powerful one. For example, you can identify folders to never be compressed and SpaceSaver won't ever touch them. It doesn't matter if this folder is within a small folder or if you're using disk-wide compression on the hard disk.

Compression is off, the following illustration shows how the SpaceSaver menu appears.



At any time, Idle Time Compression can be turned on or off by choosing "Turn Idle Time On" or "Turn Idle Time Off."

When Idle Time Compression is on, you can temporarily override the amount of time before the Macintosh 'thinks' it has been sitting idle by choosing "Idle Now" from the SpaceSaver menu. Similarly, if you are not using Idle Time Compression, you can have all files recompressed immediately by choosing the "Recompress Now" command from the SpaceSaver menu.

You can also open the SpaceSaver control panel by selecting the "Open Control Panel" command.

Where To Go From Here

The next chapter describes the functionality of Magic Menu. It provides not only SpaceSaver commands, but the ability to create StuffIt archives and expand many different file formats.

Chapter 6: Magic Menu

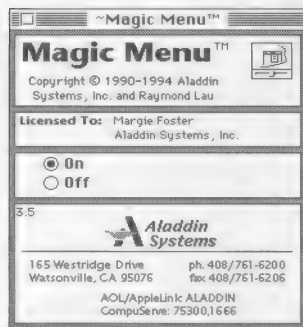
Magic Menu is a handy and useful part of SpaceSaver. Magic Menu appears in the Finder just after the Special menu. With point and click simplicity, select any icon in the Finder and SpaceSaver-compress it by using the Magic Menu.



Magic Menu has four main functions:

- Expand multiple compressed-file formats using the “Expand” command.
- Create StuffIt archives (.sit and .sea files) using two commands from the StuffIt Deluxe application—Stuff and Make Self Extracting. (See Chapter 1 for an explanation of StuffIt Deluxe.)
- Compress files using SpaceSaver.
- Get information about SpaceSaver-compressed files and folders.

Magic Menu is a control panel that’s installed when you install SpaceSaver. You can turn it on or off from here.



Magic Menu contains commands that SpaceSaver uses, but also has two commands—Stuff and Make Self-Extracting—that offer some rudimentary

abilities of the StuffIt Deluxe application, another Aladdin product that offers the complete compression solution for the Macintosh. See Appendix C for information on upgrading to StuffIt Deluxe.



Note: If you are running System 6 on a Macintosh that is not capable of displaying color, the word “Magic” appears in the Finder’s menu bar, instead of the Magic Menu icon shown in this manual.

The following sections describe the commands available from the Magic Menu.

Expand

The “Expand” command (Command-U) lets you expand files in the Finder. This command works not only with SpaceSaver files, StuffIt archives (.sit or .sea), .pkg, .cpt, but also with other files with the following suffixes: .bin, .zip, .arc, .gz, .Z, .uu, and .hqx.

Note: The “Expand” command performs the same type of expansion as the translators found on the Translate menu in the StuffIt Deluxe application.

1. To expand one or more compressed files, select them in the Finder by Shift-clicking.
2. Choose “Expand” (Command-U) from the Magic Menu.



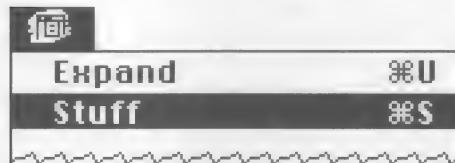
Magic Menu expands each file.

Stuff

The “Stuff” command lets you Stuff files and folders without using the StuffIt Deluxe application. (See Appendix C: Upgrading to StuffIt Deluxe if you do not currently own it.)

Although both the “Stuff” command and the “SpaceSaver Compress” command compress a file or folder, their functionality is very different. SpaceSaver Compress saves hard disk space by compressing files and folders that reside on your hard disk. The “Stuff” command compresses multiple files and folders into a single file, called an archive, that you can subsequently remove from your hard disk. Archives are an excellent way to back up files and folders you rarely use, or to send multiple files across a network or modem.

1. To Stuff a file, select one or more items in the Finder and then choose “Stuff” from the Magic Menu.

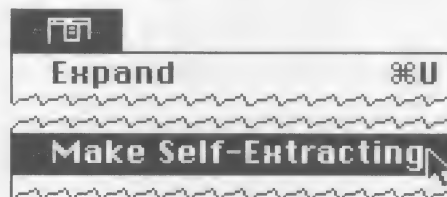


Magic Menu Stuffs the file and saves it to disk as a StuffIt archive. A progress dialog box appears as Magic Menu Stuffs the file. If you have more than one item selected to Stuff, the archive name defaults to Archive.sit.

Make Self-Extracting

The “Make Self-Extracting” command in Magic Menu makes a self-extracting archive out of any selected item in the Finder. This means you don’t need Magic Menu, SpaceSaver, or StuffIt Deluxe to open the archive and extract the files. This is handy to send files to someone who doesn’t own a StuffIt product.

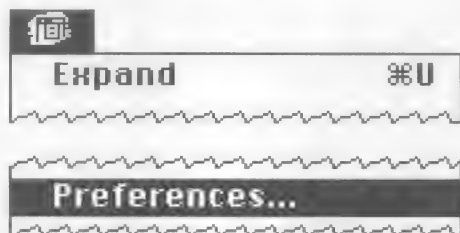
1. To create a self-extracting archive, select one or more items in the Finder and choose “Make Self-Extracting” from the Magic Menu.



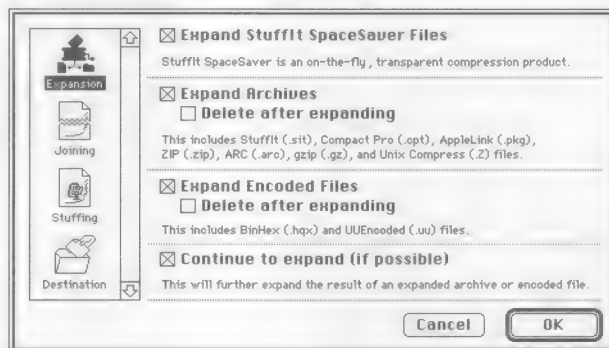
Magic Menu Stuffs the item and attaches a “.sea” suffix to the resulting archive. If you are Stuffing more than one item, the self-extracting archive name defaults to “Archive.sea.”

Preferences

When you installed the software, some basic Magic Menu preferences are preconfigured to make compression and expansion with Magic Menu effortless. You can change these preferences by choosing “Preferences...” from the Magic Menu.



The Magic Menu Preferences dialog box appears, with the Expansion options appearing first.



Expansion

There are a few preferences that specifically address what happens when you expand any type of file from the Magic Menu.

StuffIt SpaceSaver Files

The “StuffIt SpaceSaver files” check box enables Magic Menu to decompress files that have been compressed with StuffIt SpaceSaver. You may choose to turn this option off if you do not want Magic Menu’s “Expand” command to work on SpaceSaver-compressed files. This option is on by default.

Archives

If you have the “Expand Archives” option checked, Magic Menu UnStuffs any StuffIt archives (and other formats such as .Zip and .Arc) when choosing “Expand” from the Magic Menu. StuffIt files are archives that are recognizable because they usually have “.sit” at the end of the file name. You might want to turn this option off if you don’t want the “Expand” command to UnStuff StuffIt archives. This option is on by default.

Encoded Files

The “Encoded Files” check box does the same as the “StuffIt archives” check box, but it expands additional foreign file formats, such as BinHex and UUEncoded files. The default for this check box is on.

Delete after expanding Check Boxes

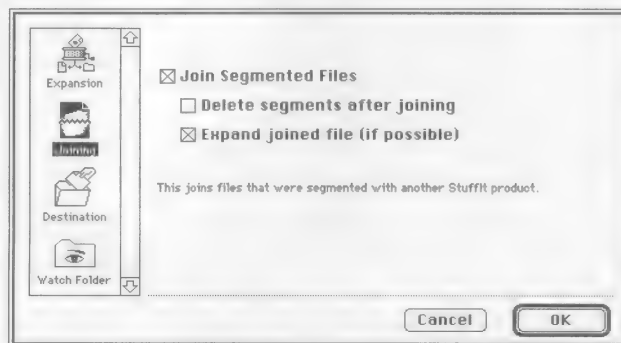
The Delete check boxes instruct Magic Menu to delete the original compressed item just after it’s expanded. This saves you the trouble of dragging the original item to the trash after it has been expanded. You are not reminded if you have this option on, so use it with caution. Both Delete check boxes are off by default.

Continue to Expand

It is possible to download a file that has not only been Stuffed, but “binhexed” as well, such as foobar.sit.hqx. (Some files have more than two compression formats applied to it. This is fairly common on the Internet.) When this option is on, which is the default, Magic Menu continues to expand the file until you have the original, uncompressed file. Expansion is done in the reverse order of the extensions that appear after the file name.

Joining

The Joining options in the Preferences dialog box lets you set options for segmented files. Segmented files are those created by the StuffIt Deluxe application, and are indicated by icons with numbers which indicate their position in the original complete archive.



Join Segmented Files

This option is on by default. If you select a segmented archive, then choose “Expand” from the Magic Menu, this option automatically joins the segments.

Delete segments after...

This option is off by default. When on, it deletes each segment after it has been successfully joined.

Expand joined file

This option is on by default. When all segments have been successfully joined, this option expands the archive to its original state.

Stuffing

The Stuffing options in the Preferences dialog box lets you set the functionality for the Magic Menu “Stuff” command. All of these options are off by default.



Note: Each option described next means the same to a StuffIt archive (.sit) and a self-extracting archive (.sea), although you can set the options independently of each other.

Delete Originals

Using the “Delete originals” check box makes Magic Menu delete all original files after they’re placed into archives. Use this option with caution.

Stuff as Individual Archives

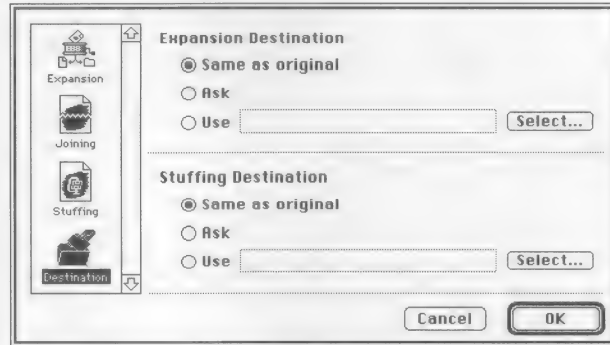
If you turn on the “Stuff as individual archives” option, Magic Menu places each selected item into its own archive when Stuffing. Otherwise, whatever’s selected when you choose “Stuff” is combined into one archive.

Encrypt with Password

When this option is on, Magic Menu prompts you for a password and subsequently encrypts the items within the archive(s) you are creating.

Destination

The Destination options in the Preferences dialog box lets you set options for expanded and Stuffed files.



Expansion Destination

You can have your expanded files placed in their original folder (which is the default), have Magic Menu prompt you for a destination, or select one that is always used for all expanded files.

Stuffing Destination

You can have your Stuffed files placed in their original folder (which is the default), have Magic Menu prompt you for a destination, or select one that is always used for all Stuffed files.

SpaceSaver Compress

The "SpaceSaver Compress" command lets you compress files and folders using StuffIt SpaceSaver.

This command is discussed in step-by-step format in Chapter 3: Easy Compression.

Any item selected for compression with the "SpaceSaver Compress" command is immediately compressed. However, if that item is subsequently expanded (by being opened), recompression does not automatically occur when you close the file. You can always recompress the file using the "SpaceSaver Compress" command again, or you can save the item into a folder designated to be compressed by the name or label-based compression methods.

SpaceSaver Info

The "SpaceSaver Info" command displays details about a compressed item.

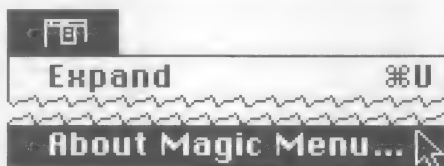
- **To get information on a compressed file, select the file in the Finder and then choose "SpaceSaver Info..." from the Magic Menu.**

The following dialog box appears which shows information about the compressed and original size of the selected file:



About Magic Menu...

"About Magic Menu..." displays a dialog box that provides version information and credits for Magic Menu.



When you choose "About Magic Menu...", a dialog box appears, showing the authors, your name, version number, and address and phone number of Aladdin Systems.

Note: If you press the Option key as you choose a command from the Magic Menu, a dialog box appears letting you set some temporary preferences for that one time you use the command. If you press the Control key when you choose Expand or Stuff from the Magic Menu, the original item is deleted after it has been successfully expanded or Stuffed.

Where To Go From Here

The next chapter explains how to expand various file formats, including not only SpaceSaver and StuffIt files, but foreign file formats as well.

If you haven't explored other chapters, you can do so now—see the Table of Contents for assistance in finding a topic you're interested in.

Chapter 7:

Expanding Items

Introduction

Now that you know how to compress files, folders, or even an entire disk with SpaceSaver's "on command" compression, how do you manually expand these items?

As noted before, any time you drag a file or folder out of a compressed folder, it is automatically expanded. Even if you have compressed only a single file or folder, SpaceSaver "watches" the Macintosh operating system for instructions to "open" and "close" items. If these instructions are called for a SpaceSaver-compressed file or folder, SpaceSaver steps in and expands the item transparently to you.

Note: You must have the room on your hard disk for the largest file to expand. Keep that in mind, especially if you are compressing application folders that contain lots of support files.

What happens to your expanded file or folder when you are done with it? If you originally compressed it with a label or keyword, it can automatically be recompressed when you close it. If you save a file to a "small" folder, it is automatically compressed. However, you can instruct SpaceSaver to "wait" until the computer is idle to recompress these files. See Chapter 5: SpaceSaver Reference for details on how to do this.

What if you want to expand a specific folder or a downloaded file quickly and easily? The first example explains the Magic Menu "Expand" command.

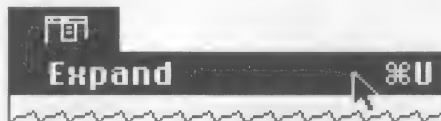
Example: Expanding with Magic Menu

This example describes how to expand a file downloaded from the Internet using the Magic Menu.

1. Select the file to expand.



2. Choose "Expand" from the Magic Menu.



Magic Menu determines the file format and uses the appropriate translator to expand the file.

Note: The Expand command in Magic Menu is preconfigured to expand almost any compressed format using this method.

Example: Using StuffIt Expander

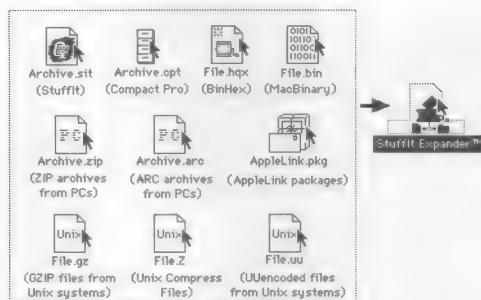
StuffIt Expander gives you the ability to perform expansion of many formats. If you have a Power Macintosh, you can expand these formats at accelerated speed.

Note: StuffIt Expander is a freeware product, which means that you may give it away to anyone you please, as long as you don't charge for it or distribute it with a commercial product. **It is the only part of the SpaceSaver package that you may freely copy and give away.**

This method requires System 7.

1. Select the compressed file you want to expand and drag its icon onto the StuffIt Expander icon.

The following illustration shows the file formats that StuffIt Expander can expand.



StuffIt Expander expands the item and places the uncompressed items in the same folder as the original file.

- If the file is a StuffIt archive (.sit) and contains multiple items, a new folder (with the name of the archive) is created and everything is UnStuffed into the new folder.

Note: If you press the Option key when you drag and drop an item onto StuffIt Expander, a dialog box appears letting you set some temporary preferences for that one time. If you press the Control key as you drag and drop an item onto StuffIt Expander, the original item is deleted after it has been successfully expanded.

Alternate Method

StuffIt Expander Preferences

Expansion Preferences

- If you are using System 6, double-click the StuffIt Expander icon and choose Expand from the File menu. Select the file to expand, and click the Expand button.

StuffIt Expander can be configured to set specific expansion and joining options, set a specific folder for expanded files, and specify a folder to monitor at regular intervals for files to expand.

The Expansion options let you choose the types of files to expand and to optionally delete the original files.

1. Choose Preferences from the StuffIt Expander File menu.

The Preferences dialog box appears, with the Expansion options appearing first by default.



2. Click the options you want.

Each expansion option determines the types of files that StuffIt Expander expands automatically. You also have the option to delete the compressed file after it is expanded with files that have the following extensions: .sit, .cpt, .pkg, .zip, .arc, .gz, .Z, .hqx, .bin, and .uu. All expansion options are on by default. All deletion options are off by default.

It is possible to download a file that has not only been Stuffed, but “binhexed” as well, such as foobar.sit.hqx. (Some files have more than two compression formats applied to it. This is fairly common on the Internet.) When the “Continue to expand” option is on, which is the default, StuffIt Expander continues to expand the file until you have the original, uncompressed file. Expansion is done in the reverse order of the extensions that appear after the file name.

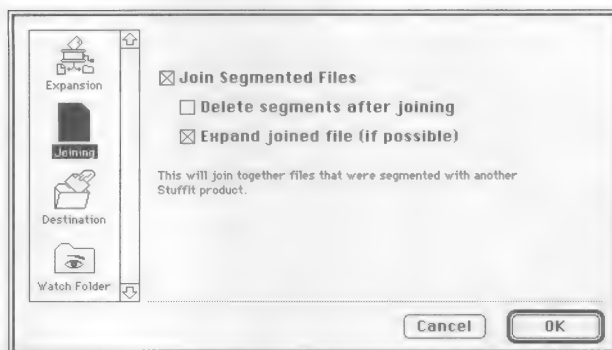
Joining Preferences

Joining is a StuffIt Deluxe process that puts together StuffIt archives that have been segmented because the archive was too large to fit on the destination media as one archive. Files that have been archived into multiple segments have a number appearing after the extension to show which segment it is. For example, Foobar.sit, Foobar.sit.2, Foobar.sit.3, and so on.

1. Choose Preferences from the StuffIt Expander File menu.

The Preferences dialog box appears, with the Expansion options appearing first by default.

2. Click Joining.



3. Click the options you want.

The Join and Expand options are on by default. The Delete segments after joining option is off by default.

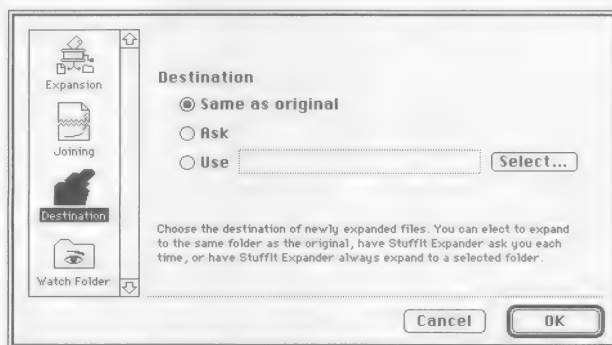
Destination Preferences

These options set the destination for expanded files. This gives you a way of knowing exactly where all your expanded files are kept.

1. Choose Preferences from the File menu.

The Preferences dialog box appears, with the Expansion options appearing first by default.

2. Click Destination.



3. Click the options you want.

The default destination is in the same folder as the original compressed file. However, you can set the option to have StuffIt Expander always ask you where to place a file, or you can set a permanent folder.

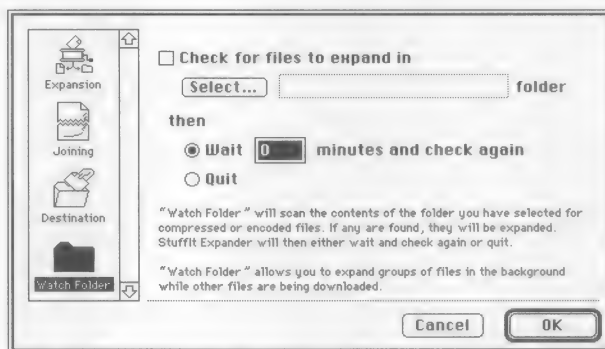
Watch Folder

StuffIt Expander can be configured to “watch” a folder at intervals you specify for files that need expanding. To set up a watch folder, do the following steps.

1. Choose Preferences from the File menu.

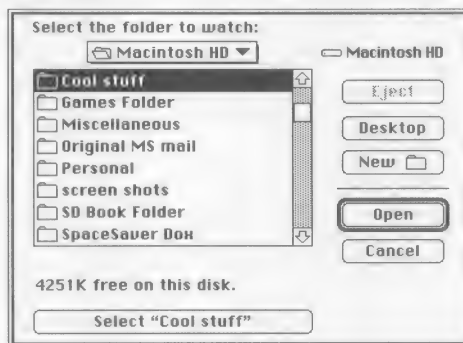
The Preferences dialog box appears.

2. Click “Watch Folder.”



3. Click the “Check for files to expand in...” check box.

A dialog box appears.



4. Choose the folder you want to use, and click the large button at the bottom of the dialog box.

5. Click one of the radio buttons:

Wait x minutes and check again: Type the number of minutes you want StuffIt Expander to wait between scans.

Quit: If you want StuffIt Expander to quit after it scans the specified folder, click this button.

Chapter 8: DropStuff and DropCompress

SpaceSaver comes with two shortcut methods for Stuffing or compressing files. One is called DropStuff, which is a Drop Box that is used with System 7 only. The other is DropCompress, also used with System 7 only. Drop Boxes are small applications that can perform tasks by “dragging and dropping” items onto them.

DropStuff and DropCompress are very easy to use. You can use either within the Drag and Drop Applications folder, or you can use the alias of DropStuff or DropCompress that the SpaceSaver installation program placed on your desktop.

Example: Using DropStuff

A quick and easy way to create a StuffIt archive is to use DropStuff.

- 1. From the Finder, select the file(s) you want to Stuff and drag them on top of the DropStuff icon on the desktop. When the DropStuff icon highlights, release the mouse button.**



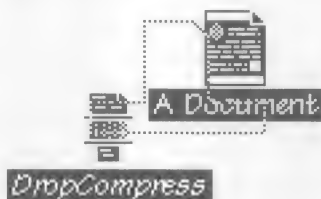
DropStuff Stuffs the file(s) in the same folder (or on the Desktop) as the original, leaving a copy of the original UnStuffed file.

Note: Holding down the Option key when using DropStuff makes a dialog box appear that provides you with additional options such as “Make Self-Extracting Archive.” See the “DropStuff Preferences” section following.

Example: Using DropCompress

A quick and easy way to SpaceSaver-compress a file or folder is to use DropCompress.

- **From the Finder, select the file(s) you want to compress and drag it on top of the DropCompress icon on the desktop. When the DropCompress icon highlights, release the mouse button.**



DropCompress compresses the file(s) in place. You can then choose the “SpaceSaver Info” command from the Magic Menu to see how much compression was achieved.

DropStuff Preferences

You can configure DropStuff using the Preferences command from the File menu.

1. **Double-click the DropStuff icon or alias.**
2. **Choose Preferences from the File menu.**

Stuffing Preferences

The Preferences dialog box appears, with the Stuffing options appearing first by default.



3. Click the options you want, and click OK.

The only default setting is to Stuff original files, rather than the alias to each file. The other settings let you choose other options, each of which is explained in detail in the “StuffIt Expander Preferences” section of Chapter 7: Expanding Items.

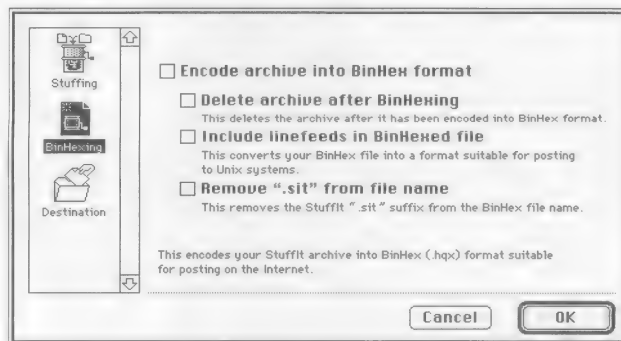
BinHexing Preferences

These check boxes set the options for preparing files for the Internet.

1. Choose Preferences from the File menu.

The Preferences dialog box appears, with the Stuffing options appearing first by default.

2. Click BinHexing.



3. Click the options you want, and click OK.

Encode files...

If this check box is marked, every file that you subsequently Stuff with DropStuff is automatically prepared for transmission over networks, such as

the Internet, that only support characters which can be typed from the keyboard (ASCII format). A file Stuffed in this way has two extensions after the name: .sit and .hqx.

Delete archive...

This check box, when marked, deletes the archive after it has been prepared with BinHex formatting.

Include linefeeds...

This check box, when marked, includes linefeeds in the final BinHexed file. In some UNIX environments, a BinHexed file might not be usable unless linefeeds are included with the normal carriage returns.

Remove ".sit"...

This check box, when marked, simply removes the ".sit" extension from the BinHexed file, so only the ".hqx" extension appears.

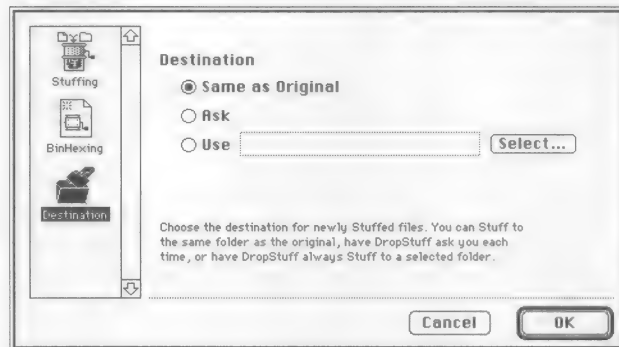
Destination Preferences

These options set the destination for Stuffed files. This gives you a way of knowing exactly where all your Stuffed files are kept.

1. Choose Preferences from the File menu.

The Preferences dialog box appears, with the Stuffing options appearing first by default.

2. Click Destination.



3. Click the options you want, and click OK.

The default destination is in the same folder as the original file. However, you can set the option to have DropStuff always ask you where to place a file, or you can set a permanent folder.

Where To Go From Here

Appendix A has more detailed information on archiving and compression. Appendix B lists frequently-asked questions and answers for SpaceSaver and other StuffIt products. Appendix C explains how to get StuffIt Deluxe.

Appendix A:

Tech Talk

This appendix gets a little more into what compression is and the differences between SpaceSaver compression and StuffIt Deluxe compression. It is provided for those who like to “get under the hood.”

Compression: Saving Space on Disk

Compression is the process by which a file or a folder is made smaller without losing any of its information. Software that compresses files can use any set of methods, called algorithms, by which the sequences of characters that make up a file are analyzed and encoded in a more efficient manner, thereby saving space on disk. Compression algorithms vary widely from program to program and the usual trade-off among algorithms is between speed, amount of memory used, and degree of compression. If an algorithm compresses quickly or uses less memory, it cannot compress as well as one that spends additional time or uses more memory to improve its compression.

Compression works by minimizing or eliminating redundancy and empty space. For example, the following 10 characters “AAAAAABBB” could be stored in a file “as is” which would occupy 10 locations, or could be “encoded” as “7A3B” which would only occupy 4 locations resulting in a savings of 60%! StuffIt Deluxe and SpaceSaver use this very simple concept along with some complex compression algorithms to achieve excellent compression ratios at unbelievable speeds.

StuffIt Deluxe and SpaceSaver strike the best balance between the fastest compression methods (which compress less) and those that save the most space (which take more time). StuffIt Deluxe compresses better, but takes more time to do so. SpaceSaver compresses quickly, but not as tightly, except in idle-time operation, when its goal is to achieve better compression ratios.

Archiving: The Basics of Combining Files and Folders

An archive is a special document that can contain multiple files and folders. Archiving is the process by which one or more files and folders are combined into a single document and often compressed during the process. StuffIt archives are those archives created by any member of the StuffIt family of products.

There are three advantages to storing documents in an archive:

- Archives usually contain compressed files, and thereby save space on disk and reduce the time it takes to transmit them over phone lines or networks.
- Collections of files stored in an archive can be sent over networks and telecommunication lines as a single document, thus making it easier for other people to retrieve all related material.
- Associated files can be kept in one archive for easy retrieval and backup.

With this software, you can also create a special type of archive called a “self-extracting archive.” A self-extracting archive is an archive that can be decompressed by anyone—even if the recipient doesn’t own SpaceSaver or another compression product.

As mentioned in Chapter 4, you can create .sit and .sea files by simply adding the appropriate extension to the item you want to Stuff. Conversely, removing the .sit or .sea extension from a file name automatically expands the file.

This process should be used with caution because the original file is always deleted after it has been Stuffed or expanded. For complete safety, make a copy of the file you want to Stuff or expand, then add or remove the appropriate extension.

SpaceSaver Compression

Now that you know what compression is and how StuffIt Deluxe uses it, let’s look at SpaceSaver. SpaceSaver does not compress as much as StuffIt Deluxe because it uses the “faster” algorithm rather than the “smaller” one, for its on demand compression. However, SpaceSaver may compress as well or better than StuffIt Deluxe in idle-time operation.

The compression that SpaceSaver performs when your Macintosh is idle does use the “smaller” algorithm. SpaceSaver does this because your computer is not being used, so there’s no reason to compress quickly. SpaceSaver can take its time to compress as tightly as possible.

How much compression can you expect on your hard disk? This depends a great deal on the nature of the data on your disk. Most word processing, database, and spreadsheet files compress extremely well. Graphic files usually compress well, unless they use a special compression scheme such as JPEG (Joint Photographic Experts Group). If you have a huge System folder, you might not see as much free disk space as you’d like because SpaceSaver will not compress anything in the System folder.

Why are there so many ways to use SpaceSaver? We wanted to offer options to automatically compress a single file, folder, or your entire hard disk, plus give you the ability to compress only those files or folders when *you* want them compressed. We have discussed in previous chapters how SpaceSaver compresses files on your hard disk—using Magic Menu, a keyword, a label, DropCompress, or disk-wide compression based on date modified—so now let's take a closer look.

When does compression occur? For any of the “easy compression” methods, as soon as you assign a keyword, label, or choose “SpaceSaver Compress” from the Magic Menu, the selected item(s) is compressed. However, what does SpaceSaver consider “idle time” for starting a disk-wide scan of files old enough to compress?

Important: Since SpaceSaver uses two different compression algorithms, the compression ratios may vary depending on machine type.

Idle Time Compression

Idle time is when there is no keyboard or mouse activity. SpaceSaver also monitors your serial port, so if you have a large download or print job going on, SpaceSaver does not start compression until the serial port activity stops. If you have a screen saver that comes on after a certain length of time, SpaceSaver ignores that, and starts scanning and compressing. However, having a screen saver running at the same time as SpaceSaver can significantly slow down SpaceSaver.

Note: Being on an AppleTalk network does not prevent your computer from going into idle time.

If you have enabled any of the three idle-time options, the first thing SpaceSaver does when the idle time “kicks in” is check an internal keyword / label list of files to see if any of the files on the list match any expanded files. These are the files that you originally marked for compression with a keyword or label, and have since been used (so they are in a non-compressed state). If a match occurs, SpaceSaver recompresses the file.

Once all keyword/label files have been recompressed, SpaceSaver starts a disk-wide scan. As it finds “quick-compressed” and SpaceSaver 1.x-compressed files, or eligible “date-modified” files, SpaceSaver compresses them using the “smaller” algorithm method.

SpaceSaver always starts in the same place on your hard disk each time it begins its idle time scan. When it finds an eligible file to compress, it checks these conditions before compressing the file:

- Is this file in the System Folder?
- Is it marked as a never compress item?
- Is the file already smaller than the physical block size of the hard disk?

- Is the file already compressed?
- Is it a System folder item? (even if it is not in the System Folder)

If the answer is "Yes" to any of these conditions, SpaceSaver does not compress the file, and continues on to the next file.

Once the files that match the date-modified criteria have been compressed, SpaceSaver "forgets" them. SpaceSaver does not maintain an internal list of date modified files (unlike files compressed with a keyword or label). Therefore, if you open and modify a date-modified compressed file (which changes the date of the file), SpaceSaver does not automatically recompress it when it performs its next disk scan. SpaceSaver does not compress it until the file is old enough the next time SpaceSaver does an idle time scan.

Other Compression Programs

If you are currently using Now Software's Now Compress™, Stac Electronics' Stacker™ for Macintosh, or Symantec's AutoDoubler™, you need to expand any compressed files, and uninstall or deactivate the program before installing SpaceSaver. See the documentation that came with your current compression program for instructions on how to uninstall it.

Appendix B: Common Questions (and Answers!)

Q: My friend doesn't have SpaceSaver. How do I give him a compressed file?

A: Make a StuffIt archive. You can then either give your friend a copy of StuffIt Expander to expand the file, or make the file self-extracting. See Chapter 3: Easy Compression.

Q: How do I know how much a file or folder has been compressed by SpaceSaver?

A: You can easily determine the size of a SpaceSaver-compressed file or folder by selecting the item, then choosing "SpaceSaver Info" from the Magic Menu.

Q: Sometimes when I compress a file with SpaceSaver, it doesn't seem to get smaller. Why?

A: There could be several reasons for this:

- The file could be already "compressed" and SpaceSaver may not be able to compress it further.
- SpaceSaver may find that by compressing a file, it won't save any disk space, so it simply doesn't touch the file. This is the case for small files.
- It may have the never compress keyword as part of its name or be in a folder or volume with the never compress keyword.
- The file may be on a network disk and you have the "Never compress on remote disks" option turned on.
- You may have "Never compress on label" turned on and that item is labeled with the never compress label. (This is especially true if the "Never compress" label is "None.")
- The file may be on ejectable media (a floppy disk, for example) and you

have "Never compress on other ejectable" turned on.

- The file is a special type of file that SpaceSaver will never try to compress, because it knows it is already compressed. An example of this is a QuickTime movie or any file created with another compression product.
- All items in the System Folder are never compressed.

Q: May I give my co-workers a copy of SpaceSaver?

A: No. StuffIt SpaceSaver is a commercial product and each copy can only run on a single computer. SpaceSaver is priced inexpensively enough so that anyone can afford a copy for their Macintosh. Aladdin Systems offers volume discounts and site licenses that are very reasonable for business users. Call us at 408/ 761-6200 for details. However, you can give away StuffIt Expander.

Q: How do I prevent SpaceSaver from compressing individual files or folders that I don't ever want compressed?

A: Give those items the never compress keyword or label, and SpaceSaver will expand (if necessary) and never compress those items.

Q: I Stuffed multiple files into an archive and the archive is too large for a floppy disk. What do I do?

A: UnStuff the archive contents and break them into smaller groups for multiple archives. However, StuffIt Deluxe, also from Aladdin Systems, can easily segment the archive so it will fit on the floppy disk. See Appendix C for information on getting StuffIt Deluxe.

Q: Will Idle Time Compression drain my Portable, PowerBook, or PowerBook Duo battery?

A: No. We have purposely disabled this feature when you are running under battery power. This feature works only when the machine is plugged in.

Q: I was using my computer and the power went out. When the power came back on, I started my Macintosh and immediately saw a message that said "SpaceSaver was unable to complete an operation. The temporary files are located in the SpaceSaver Rescued Items folder." What does this mean?

A: It means that SpaceSaver was doing something when your power went out. Since SpaceSaver has multiple levels of protection against losing information, SpaceSaver placed some temporary files into this special folder. Just move the file(s) that are there to another location, and then open them to see what the contents are. You'll find that you won't lose valuable information with SpaceSaver.

- Q:** When I open a folder full of compressed Photoshop files, SpaceSaver appears to be working on them just to show the icons. What is happening?
- A:** Any software that uses custom icons in documents will exhibit this. When the Finder needs to display the icon, SpaceSaver must expand the document to get the icon, and thus, the delay. To avoid the delay, switch your view in the Finder to one that does not display icons, such as by Name or by Date. To switch the View setting, choose the option you want from the View menu in the Finder.
- Q:** I installed the SpaceSaver software and now my computer doesn't start up. What happened?
- A:** SpaceSaver may be encountering problems with other system extensions or control panel items. Hold down the Shift key when the Macintosh starts to disable all extensions, including SpaceSaver and Magic Menu. Try removing extensions and/or control panel items and re-installing them in your System Folder one at a time until you've found the incompatible file.
- Q:** I want to distribute my software product in a compressed, self-extracting form to save on disk costs. Can I do this with my product?
- A:** Not without a special license. Aladdin Systems licenses various types of self-extracting archives and installers. While a self-extracting archive is the simplest form of an installer, we have installation technologies that can automate a multiple disk installation process and more. Contact Aladdin Systems for more information.
- Q:** I've read the manual and I'm still having problems. What do I do?
- A:** Call our Technical Support Hotline at 408/761-6200 between the hours of 9am and 5pm Pacific time (9 am to 3 pm on Fridays). When calling Technical Support, remember to:
- Know your hardware and software configuration (including the type of Macintosh, the amount of memory, and the startup and Control Panel documents installed).
 - Know the version numbers of StuffIt SpaceSaver and the System software.
 - Have a detailed description of what happened.
 - When possible, be seated at the Macintosh with the software running.
- Q:**How can I reach Aladdin Systems?
- A:** Phone: 408/761-6200; Fax: 408/761-6206

Mail address: Aladdin Systems, Inc.
165 Westridge Drive
Watsonville, CA. 95076
Email: AppleLink, America Online: ALADDIN
GEnie, eworld: AladdinSys
CompuServe: 75300, 1666
Internet: aladdin@well.sf.ca.us

Appendix C: Upgrading to StuffIt Deluxe

StuffIt Deluxe

Now that you know the basics for compressing files and folders, you may want to consider purchasing the more advanced StuffIt Deluxe package from Aladdin Systems. StuffIt Deluxe lets you do a number of things that SpaceSaver alone cannot do.

StuffIt Deluxe consists of:

1. StuffIt Deluxe, the application.

- Open multiple archives simultaneously and move items between archives and the Finder by simply dragging (True Finder Integration™ .)
- Extract individual items from archives and add new items to existing archives.
- Obtain detailed information about archives and their contents.
- Back up very large files onto successive disks using the segment command. Recover your files by simply rejoining the segments into one original file.
- Automate compression and backup routines with a built-in scripting language.

2. The StuffIt Deluxe Viewers.

- Built-in viewers let you instantly view Text and PICT files contained within archives without having to UnStuff them first.

3. Networking & Communications Tools.

- Work with archives and compressed files created on other types of computers such as IBM PCs and UNIX machines as well as other types of Macintosh archives. These formats include ZIP, ARC, tar, uuencode, BinHex, MacBinary, and many more.

- Use provided scripts with MicroPhone™ II to work transparently with StuffIt Archives.
- Use StuffIt Deluxe together with Microsoft Mail and CE Software's QuickMail

4. Other Tools and Utilities.

- Convert your old archives and other types of archives to StuffIt archives.
- Create multiple-disk self-extracting files.
- Stuff and UnStuff archives with QuicKeys 2 extensions, within HyperCard, and with MPW tools.
- View the contents StuffIt archives in any XTND-supporting application

How to Get StuffIt Deluxe

Aladdin offers a direct upgrade for all registered SpaceSaver users. Contact Aladdin at 408/761-6200 for the best price available.

A

Aladdin Systems
 ways to reach us 53
algorithms explained 22
algorithms of compression 47
always compress keyword 10, 22
animated StuffIt watch status
 indicator 25
AppleTalk network and idle time 49
AppleTalk Remote Access 26
applications
 and SpaceSaver 22
archives
 advantages 48
 brief introduction 31
 defined 48
 encrypting 34

B

Balloon help 7
BinHexing preferences 45

C

calling for technical support 53
Commands
 Expand 30
 Make Self-Extracting 31
 on SpaceSaver menu 28
 Recompress Now 21
 SpaceSaver Compress 35
 SpaceSaver Info 35
 Stuff 30
commercial distribution 53
Components of SpaceSaver 7
compression
 algorithms explained 22
 date modified 9
 degree of 48

compression (*continued*)
 described 48
 disk-wide 9
 disk-wide during idle time 15–17
 idle time 15, 49
 idle-time compression facts 22
 label-based 9, 12
 less than expected 51
 limitations of idle-time
 compression 17–18
 marking for 9
 most popular methods of 9
 name-based 9
 never compress label 26
 never compress remote disks 27
 never compress settings 25
 results of idle-time compression
 17
 sequence of events at idle time 49
 setting preferences 22–25
 status indicators 24
 using labels 23
 verifying the data 24
 with DropCompress 9, 14, 44
 with keyword 22
 with Magic Menu 9, 13
compression defined 47
compression methods
 listed 9
Control key use 36, 39
Control Panels
 Magic Menu 29
 SpaceSaver 12, 16, 19
converting SpaceSaver 1.x files 21
criteria for compressing a file 49
Custom installation 6–7

D

date-modified compression 9
default keywords 10
Define date modified option 21
Define idle time option 21
degree of compression achieved 48

- delayed recompression 21
- Desktop
 - aliases 7
- Destination preferences
 - and Magic Menu 35
- developer info 53
- Differences
 - SpaceSaver and StuffIt 1
 - Stuff and Compress 31
- disk-wide compression 9
 - explained 15
- distribution of self-extracting files 53
- don't compress settings 25–27
- Drag and drop
 - with DropCompress 44
 - with DropStuff 43
- Drop Box
 - defined 14, 43
- DropCompress 9, 14, 44
- DropStuff 43
 - destination prefs 46
 - preferences 44

E

- ejectable media
 - never compress options 27
- Electronic addresses
 - of Aladdin Systems 53
- encrypting an archive 34
- Expand command 30
- expanding files
 - brief introduction 37
- Expansion prefs
 - Magic Menu 32
- extensions
 - .arc 40
 - .bin 40
 - .cpt 40
 - .gz 40
 - .hqx 40
 - .pkg 40
 - .sea 23, 24, 31, 48

- extensions (*continued*)
 - .sit 23, 24, 40, 48
 - .uu 40
 - .Z 40
 - .zip 40
 - removing 24

F

- Files
 - deleting originals 48
 - expanding 37
 - expanding foreign file 37
 - expanding with Magic Menu 30
 - expanding with StuffIt Expander 38
- floppy disks
 - never compress options 27
- Foreign file expansion 37
- freeware
 - StuffIt Expander 38

H

- hard disk space
 - to expand files 37
- Help
 - balloon 7

I

- icons
 - segmented 33
- Idle Time Compression 15
- idle-time compression
 - and AppleTalk network 49
 - and applications 22
 - delayed recompression 21
 - discussion 49
 - maximum compression 21
 - results of 17

idle-time compression (*continued*)
 sequence of events 49
 settings 20, 21–22
 things to consider 22
 what gets compressed 49
idle-time settings 16
Illustrations
 compression settings dialog box 22
 DropStuff preferences dialog box 45
 Finder menu bar 29
 idle-time settings dialog box 16, 20
 Magic Menu preferences dialog 32
 never compress settings dialog box 26
 segmented icons 33
 StuffIt Expander prefs dialog 40
 what StuffIt Expander expands 39
installation 3–6
installing
 custom 6–7
 standard 3–6

J

Joining preferences
 Magic Menu 33

K

keywords
 default 10
 default for always compress 22
 never compress 26
 reserved 23, 24
 rules 23

L

label-based compression 9, 23
 example 11–13
 explanation 12
 never compress label 26
labels
 choosing 23

M

Magic Menu
 about box 36
 and SpaceSaver commands 35
 and SpaceSaver Compress 35
 and SpaceSaver Info 35
 and StuffIt Deluxe capabilities 30
 compressing with 13
 compression 9
 control panel 29
 deleting originals prefs 33
 destination prefs 35
 encoded files options 33
 Expand command 30
 expanding foreign file 37
 expansion prefs 32
 joining prefs 33
 Make Self-Extracting 31
 setting preferences 32–35
 Stuff command 30
 Stuffing prefs 34
 what's new 2
Make Self-Extracting command 31
marking an item for compression 9
Menus
 SpaceSaver 27

N

name-based compression 9
described 10
example 10–11
keyword rules 23
never compress keyword 26
reserved keywords 23

networks and compression 27

never compress 17
ejectable media 27
on location 26
remote disks 27

never compress keyword 10, 26

never compress removable media 27

No status indicator 25

Now Software

Now Compress 50
StartUp Manager 6

O

Option key use 36, 39, 44

Options

defining date modified 21
defining idle time 21
defining volumes to compress 21
ejectable media never compress
27
never compress floppy disks 27
never compress remote disks 27

Show menu 24

Verify Writes 24

Original files

deleting 48

P

phone number for technical support
53

Portable battery use 15, 52

PowerBooks and batteries 15

Preferences

in DropStuff 44

in Magic Menu

setting temporary 36

in StuffIt Expander

setting temporary 39

Progress dialog status indicator 25

Q

QuickTime movies 52

R

RAM requirements 3

Recompress Now command 21

Registering 3, 5

Registration number 5

removable media

never compress options 27

Requirements 3

RAM 3

System software 3

reserved keywords 23, 24

rules for keywords 23

S

screen savers and SpaceSaver 17

self-extracting archives

defined 48

serial port activity and SpaceSaver 17

setting idle-time compression
options 20

Settings

defining date modified 21

defining idle time 21

defining volumes to compress 21

Show Menu option 24

SpaceSaver

- and applications 22
 - and Magic Menu 32, 35
 - and screen savers 17
 - and serial port activity 17
 - animated StuffIt watch status indicator 25
 - brief introduction 1
 - components 7
 - compression methods 9
 - compression with DropCompress 44
 - control panel 12, 16, 19
 - delaying recompression 21
 - favorite compression methods 9
 - idle-time compression facts 22
 - keywords 10
 - maximum compression 21
 - no status indicator 25
 - progress dialog status indicator 25
 - reasons for less compression 51
 - using compressed files 11
 - what's new 2
- SpaceSaver Compress command 35
- SpaceSaver compression explained 48
- SpaceSaver Info command 35
- SpaceSaver menu 24, 27
- commands on 28
- Stac Electronics' Stacker 50
- Standard installation 3–6
- startup icons 5
- status indicators 24
- animated StuffIt watch 25
 - none 25
 - progress dialog 25
- Stuff command 30
- Stuffing
- and Magic Menu prefs 34
 - with DropStuff 43
- StuffIt Deluxe
- and Magic Menu 30
 - brief introduction 1
 - features of 55
 - upgrade offer 55

StuffIt Engine

- brief description 2
- StuffIt Expander
- destination prefs 41
 - expanding files 38
 - expansion prefs 39
 - joining prefs 40
 - setting preferences 39–42
 - watch folder 42
- Symantec's AutoDoubler 50
- System 6 Users 30
- System 6 users 3, 6, 9, 11, 14, 16, 20, 39
- System Folder 7
- items inside 26

T

- technical support number 53
- Temporary Items folder 52
- Temporary prefs in Magic Menu 36
- Temporary prefs in StuffIt Expander 39
- troubleshooting 51–53

U

- upgrading to StuffIt Deluxe 55
- User's Guide
- conventions 2

V

- Verify Writes option 24
- Volumes to compress option 21

W

warning

removing extensions 24

watch folder in StuffIt Expander 42

What was installed 7





1. The first part of the document discusses the importance of maintaining accurate records of all transactions and activities. It emphasizes that proper record-keeping is essential for transparency and accountability, particularly in financial matters. The text outlines various methods for organizing and storing data, including digital databases and physical filing systems. It also mentions the need for regular audits and reviews to ensure the integrity of the information.

2. The second part of the document focuses on the role of communication in achieving organizational goals. It highlights the importance of clear and concise communication, both internally and externally. The text provides guidelines for effective communication, such as using appropriate language, listening actively, and providing feedback. It also discusses the benefits of open communication and how it can foster a collaborative work environment.

3. The third part of the document addresses the issue of resource management. It discusses the importance of identifying and allocating resources effectively to achieve the organization's objectives. The text provides strategies for managing resources, including budgeting, prioritization, and delegation. It also mentions the need for regular monitoring and evaluation of resource usage to ensure optimal performance.

4. The fourth part of the document discusses the importance of innovation and creativity in driving organizational growth. It emphasizes that innovation is a key factor in staying competitive in a rapidly changing market. The text provides guidelines for fostering a culture of innovation, such as encouraging risk-taking, providing resources for experimentation, and recognizing and rewarding innovative ideas.

5. The fifth part of the document discusses the importance of employee development and training. It highlights that investing in employee development is crucial for long-term success. The text provides strategies for identifying training needs, designing effective training programs, and evaluating the impact of training. It also mentions the importance of providing ongoing support and mentorship to employees.

6. The sixth part of the document discusses the importance of maintaining a positive organizational culture. It emphasizes that a strong culture is essential for attracting and retaining top talent. The text provides guidelines for building a positive culture, such as promoting values, encouraging teamwork, and recognizing achievements. It also mentions the need for regular communication and feedback to ensure the culture remains relevant and effective.

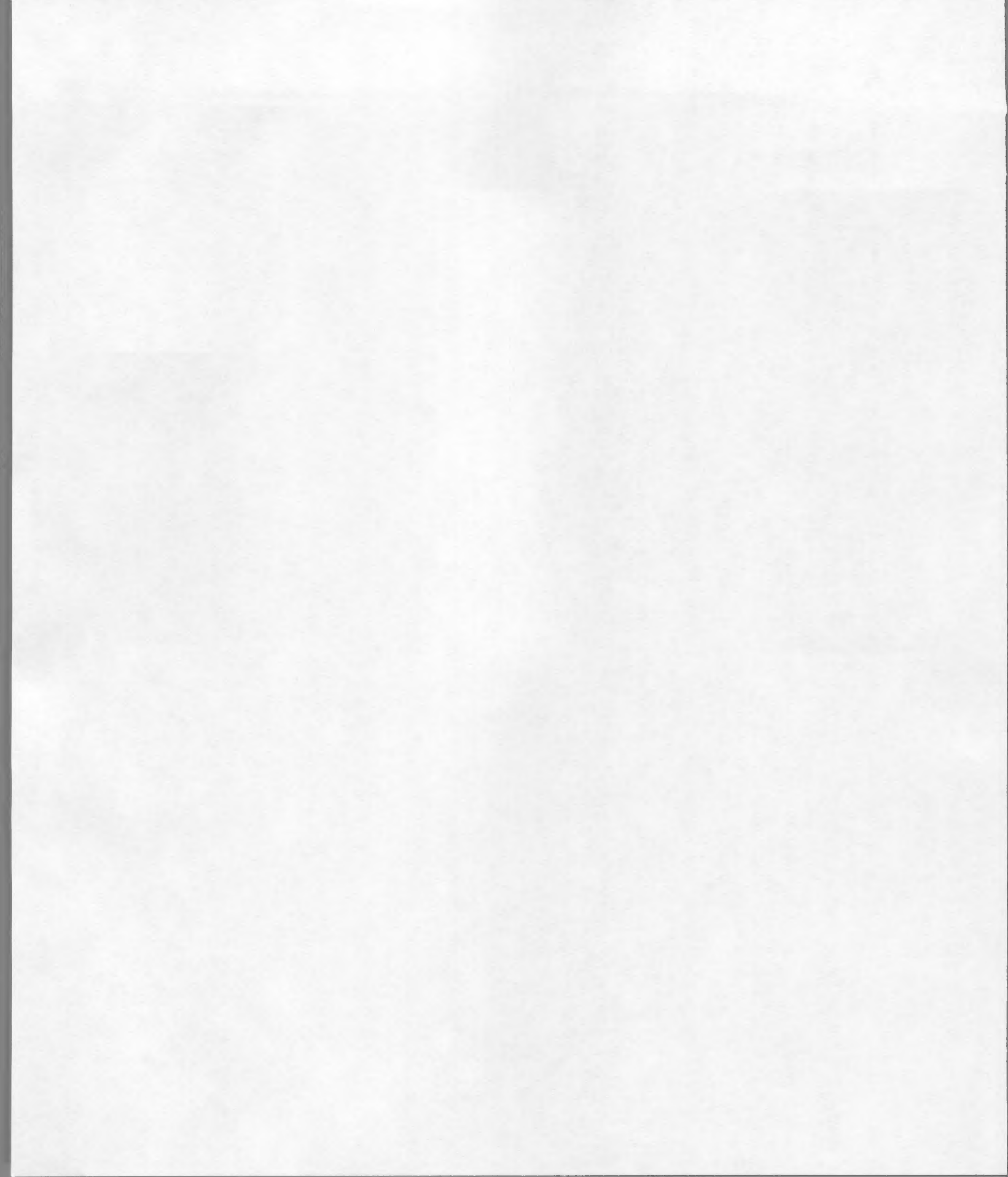
7. The seventh part of the document discusses the importance of risk management. It highlights that identifying and managing risks is essential for protecting the organization's assets and ensuring its long-term viability. The text provides guidelines for assessing risks, developing risk mitigation strategies, and implementing risk management frameworks. It also mentions the importance of regular risk assessments and updates to the risk management plan.

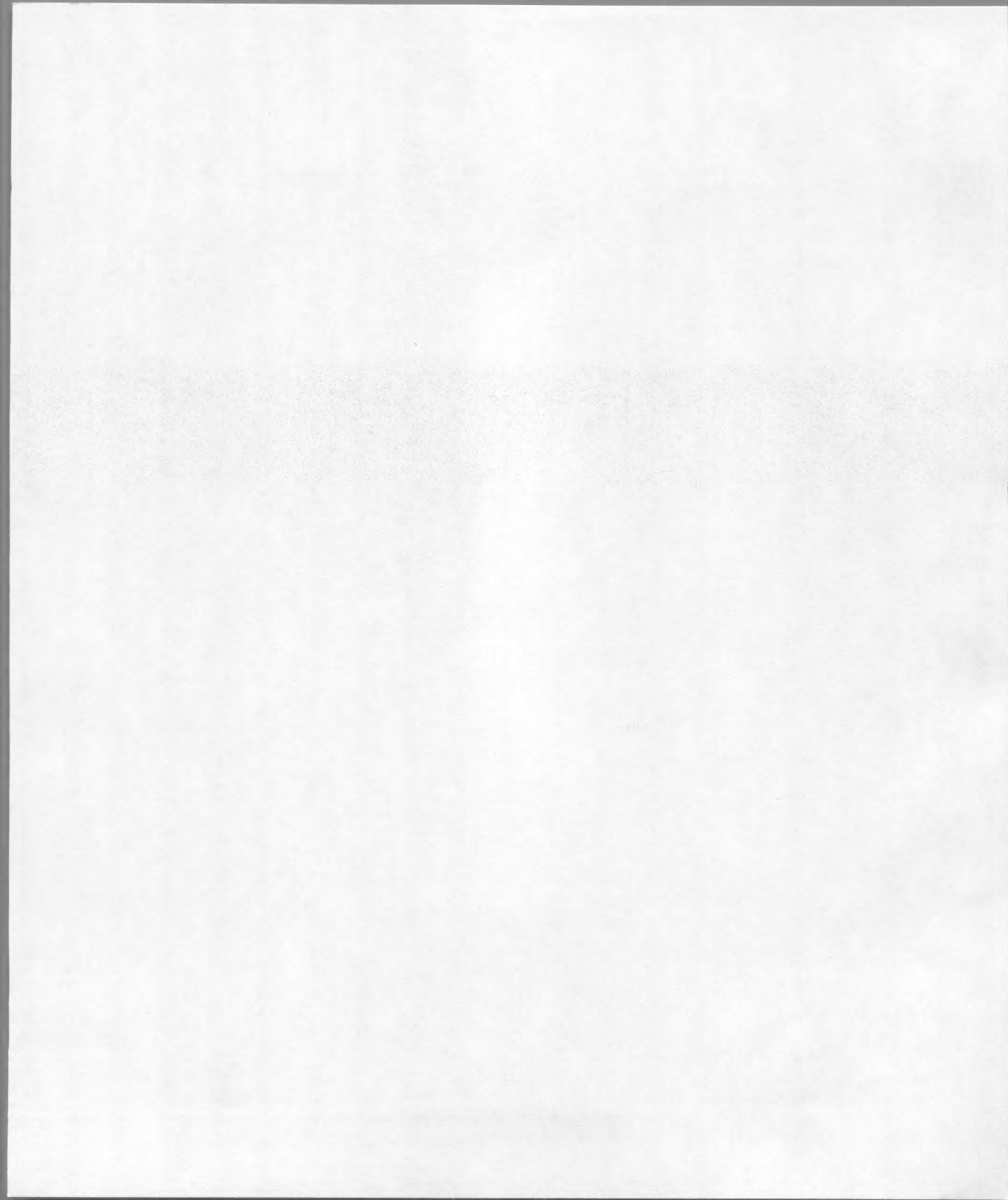
8. The eighth part of the document discusses the importance of legal and regulatory compliance. It emphasizes that staying up-to-date with legal and regulatory requirements is essential for avoiding penalties and ensuring the organization's operations are lawful. The text provides guidelines for identifying applicable laws and regulations, implementing compliance programs, and conducting regular audits to ensure compliance.

9. The ninth part of the document discusses the importance of sustainability and social responsibility. It highlights that organizations have a responsibility to the community and the environment. The text provides guidelines for developing sustainable practices, such as reducing waste, conserving resources, and supporting social initiatives. It also mentions the importance of reporting on sustainability efforts and engaging with stakeholders.

10. The tenth part of the document discusses the importance of continuous improvement. It emphasizes that organizations should constantly seek ways to improve their performance and efficiency. The text provides guidelines for identifying areas for improvement, implementing change management processes, and monitoring progress. It also mentions the importance of fostering a culture of continuous learning and improvement.











165 Westridge Drive
Watsonville, California 95076-4159
United States of America (408) 761-6200

ISBN 1-878-777-04-1