

README FILE

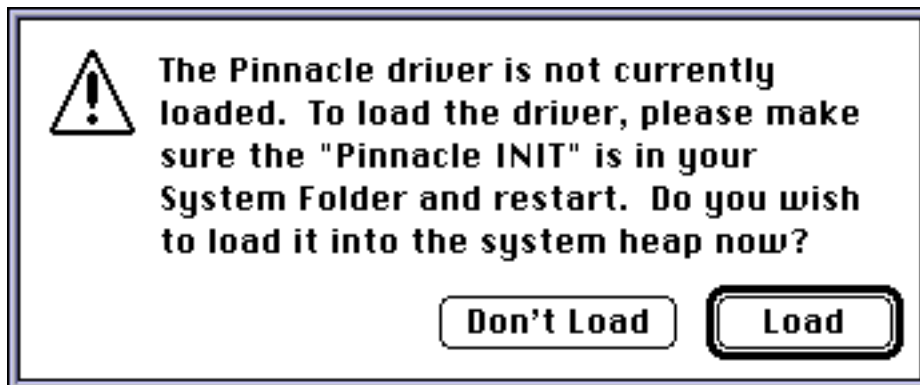
May 5, 1995

For Pinnacle Micro Formatter and INIT 3.0.8

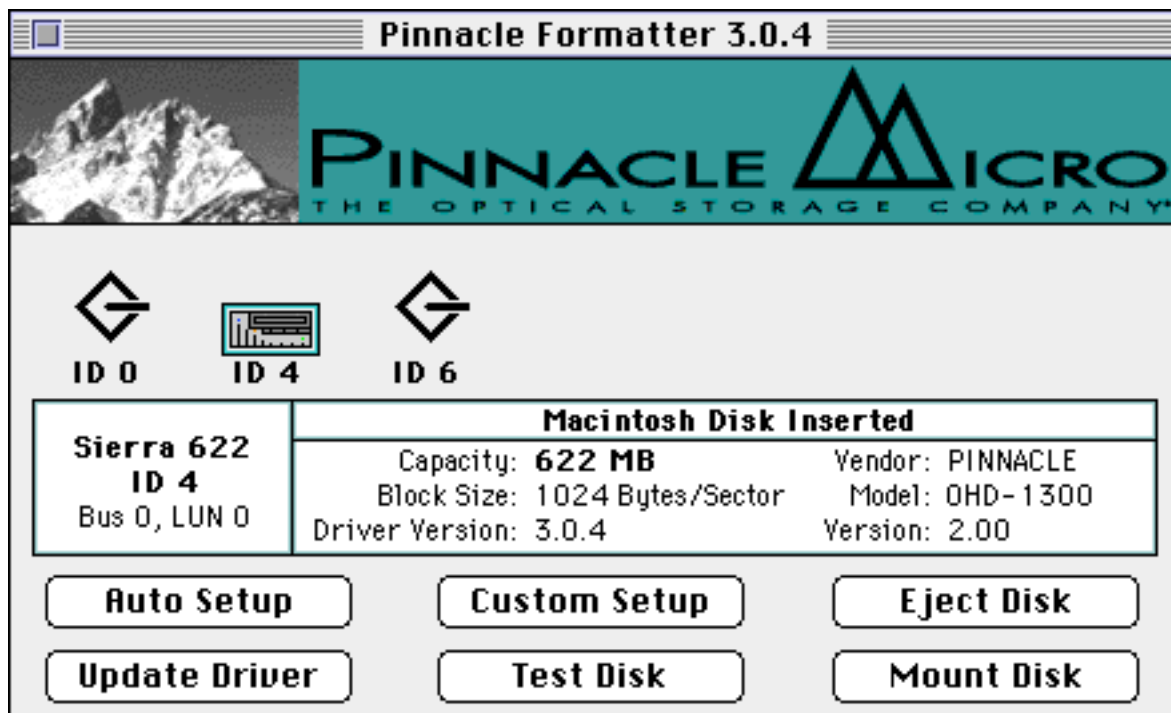
Copyright © 1994-1995 by Pinnacle Micro, Inc.

All rights reserved.

Included on this diskette is a new version of the PMO Formatter that is easier to use. When you start up the program, it scans your SCSI bus and determines what disk drives you have. If it finds a Pinnacle Micro optical drive that does not have a current driver installed, a dialog like the following is displayed:



You should click on the Load button. If you do not load the driver, you will only be able to access the Test functions in the Formatter program. After scanning all the drives and loading any needed drivers, you will reach the main window which looks like the following:



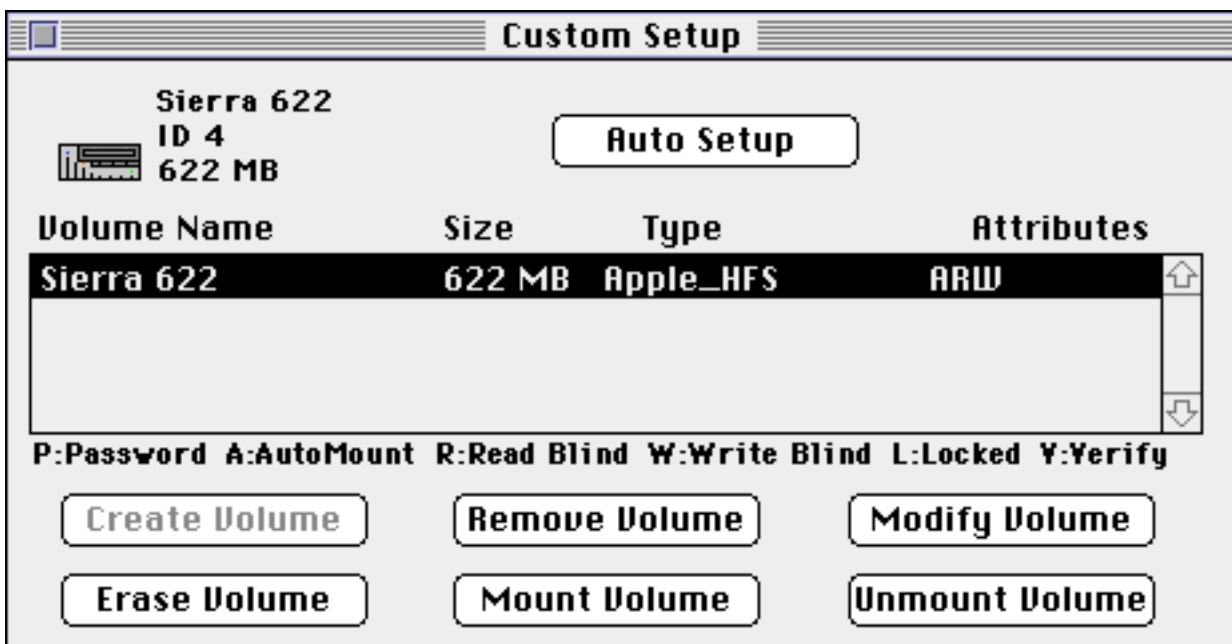
Across the middle of the window are icons for each of your drives, identified by

SCSI ID number. You should click on the icon of the drive you wish to work with (the program defaults to selecting the first Pinnacle Micro optical drive it finds on your SCSI bus). If there is no optical disk inserted, you will have to insert a disk in order for the buttons on the window to be available. The buttons and their functions are:

- Auto Setup - click this button in order to fully format and partition an optical disk
- Custom Setup - click this button to remove, create, erase, and modify partitions
- Eject Disk - click this button to unmount and physically eject the optical disk
- Update Driver - click this button to update the driver on the optical disk
- Test Disk - click this button to test the optical disk for defects and other problems
- Mount Disk - click this button to mount any unmounted partitions on the optical disk

During Auto Setup, you may be asked if you wish to have certification done during format. Format without certify is faster but does not check the disk for bad sectors. Format without certify should not be done with our older 650 drives. For our newer drives, it is still best to format with certify the first time you format each disk. If you have our Sierra drive and are using high capacity media, you will be asked first to choose Fast mode or Normal mode. If you choose Fast mode the disk will be formatted in a way that will operate faster, until it starts to fill up, but will be incompatible with other makes of optical drive. Choose Normal mode for making disks that are compatible with other optical drives.

If you click on Custom Setup, a window like the following will be displayed:



You can select a partition and then various buttons will be activated to work with it.

The buttons and their functions are:

- Auto Setup - serves the same function as the Auto Setup button on the main window
- Create Volume - click on this button to create a new volume out of a free partition

Remove Volume - click on this button to convert a used partition back into the free area

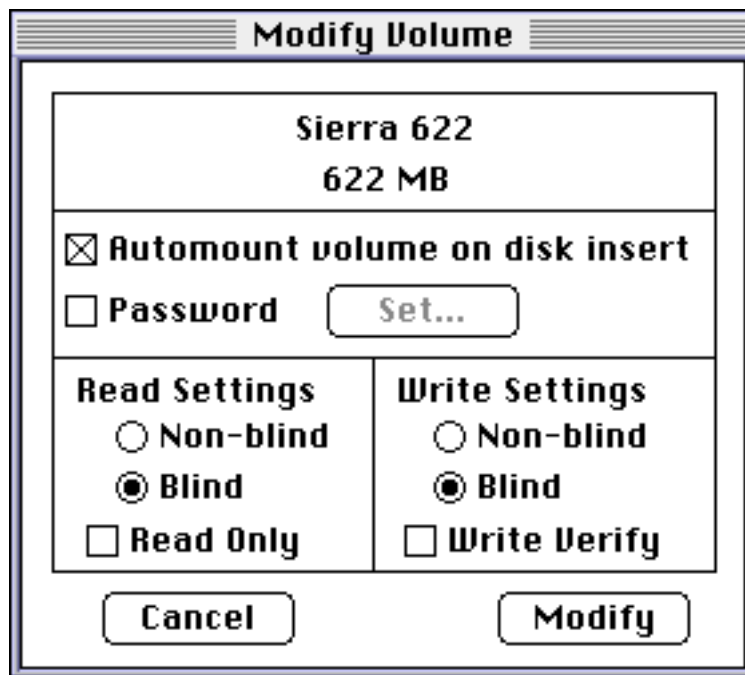
Modify Volume - click on this button to make changes to the selected partition

Erase Volume - click on this button to erase all the files in the selected partition

Mount Volume - click on this button to mount the selected partition to the desktop

Unmount Volume - click on this button to unmount the selected partition from the desktop

If you click on Modify Volume, a window like the following will be displayed:



The top of the window has the name of the volume and its size. You can choose to have the partition to automatically mount, otherwise the partition will have to be manually mounted. Automount is required to boot from the disk. You can also set or change a password, that will be required to mount the partition. Please note that differences in upper and lower case characters are important in passwords.

There are two ways to transfer SCSI data on a Macintosh, blind transfers or non-blind. Blind transfers are faster but non-blind is safer. When creating a new partition, the Formatter program will automatically default to a recommended setting for your drive. Please do not change the default setting from non-blind to blind, unless you intend to extensively test the disk in the new setting before relying on it. Using blind transfers on a drive that does not support it can cause disk error messages or data corruption without you knowing it. Our Sierra drive works fine with blind transfers. Our current Tahoe 230 drive may require non-blind settings for your Macintosh. The Orray does not support blind writes unless you are using the new SCSI Manager 4.3 (blind reads work fine regardless). If the disk was partitioned by another formatter program, the Formatter program will default to non-blind settings on the Modify Volume window. Clicking the Read Only option will make the partition write protected. Click on Write Verify to have the drive verify

every write it makes. Please note that the changes will not be effective until the disk is ejected and remounted.

If you have an AV Macintosh, PowerPC Macintosh, or an 68040 Macintosh with SCSI Manager 4.3 INIT (system extension) installed, make sure you are always using our driver 3.0.6 or later. This means making sure our Pinnacle INIT 3.0.7 is in your extensions folder and always starting up the Macintosh without disks in your MO drives or making sure the drivers on your disks are updated to version 3.0.6 or later.